

339 E Whitcomb

Madison Heights, MI

- 11,593 Square Feet For Lease
- Very Clean
- Seconds from I-75 Expressway
- Central Location
- 7-Ton Crane
- Great Visibility

INDUSTRIAL BUILDING FOR LEASE



10,593 of Factory



1,000 SF of Office



12'x12' & 12'x14' Grade Level Doors



FOR MORE INFORMATION:

Garry Rogers
Senior Vice President
248.637.3527
grogers@LMCap.com



L. MASON CAPITANI
CORFAC INTERNATIONAL

CELEBRATING 60 YEARS

248.637.9700 | LMCap.com

Information contained herein was obtained from sources deemed to be reliable but is not guaranteed. Subjects to prior sales, changes of price or withdrawal.

339 E Whitcomb

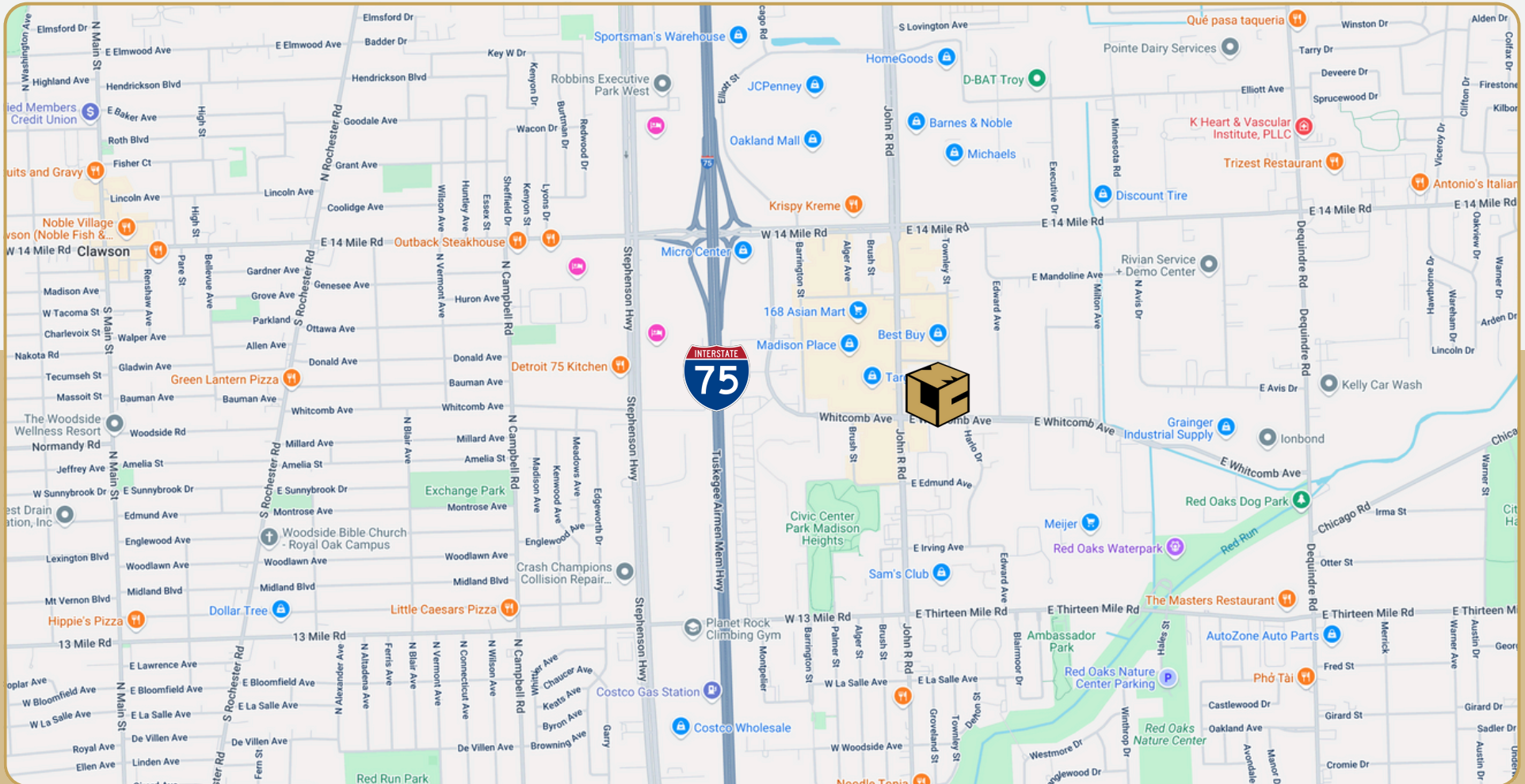
Madison Heights, MI



L. MASON CAPITANI

CORFAC INTERNATIONAL

CELEBRATING 60 YEARS



248.637.9700 | LMCap.com

Information contained herein was obtained from sources deemed to be reliable but is not guaranteed. Subjects to prior sales, changes of price or withdrawal.

339 E Whitcomb

Madison Heights, MI



248.637.9700 | LMCap.com

Information contained herein was obtained from sources deemed to be reliable but is not guaranteed. Subjects to prior sales, changes of price or withdrawal.

339 E Whitcomb

Madison Heights, MI



L. MASON CAPITANI

CORFAC INTERNATIONAL

CELEBRATING 60 YEARS

Industrial Property Details:

Details:

Total SF:	11,593 SF
Available SF:	11,593 SF
Office SF:	1,000 SF
Factory SF:	10,593 SF
Zoning:	M-1
Acres:	0.85
Frontage:	185'
Depth:	200'
Expandable:	No
Intersection:	John R and 14 Mile
X-Way Distance:	1 Mile I-75
Parking:	20 Spaces
Year Built:	1974
Year Renovated:	-
Outside Storage:	No
Rail Siding:	No
Occupancy:	Immediate

Interior:

Ceiling Height:	18'
Bay Size:	-
Restrooms:	4
Crane(s):	7-Ton
Power:	240/480 800 Amps
Lighting:	Fluorescent
Truckwells:	-
Grade Door:	(1) 12'x12', (1) 12'x14'
Heating:	Gas Forced Air
A/C:	Office Only
Sprinklered:	-
Floor Drains:	No
Air Lines:	Yes
Notes:	-

Economic:

Lease/SF:	\$7.50/SF
Lease/Month:	\$7,245.63
Lease Terms:	NNN
Taxes:	\$16,942.16

248.637.9700 | LMCap.com

Information contained herein was obtained from sources deemed to be reliable but is not guaranteed. Subjects to prior sales, changes of price or withdrawal.

339 E Whitcomb

Madison Heights, MI

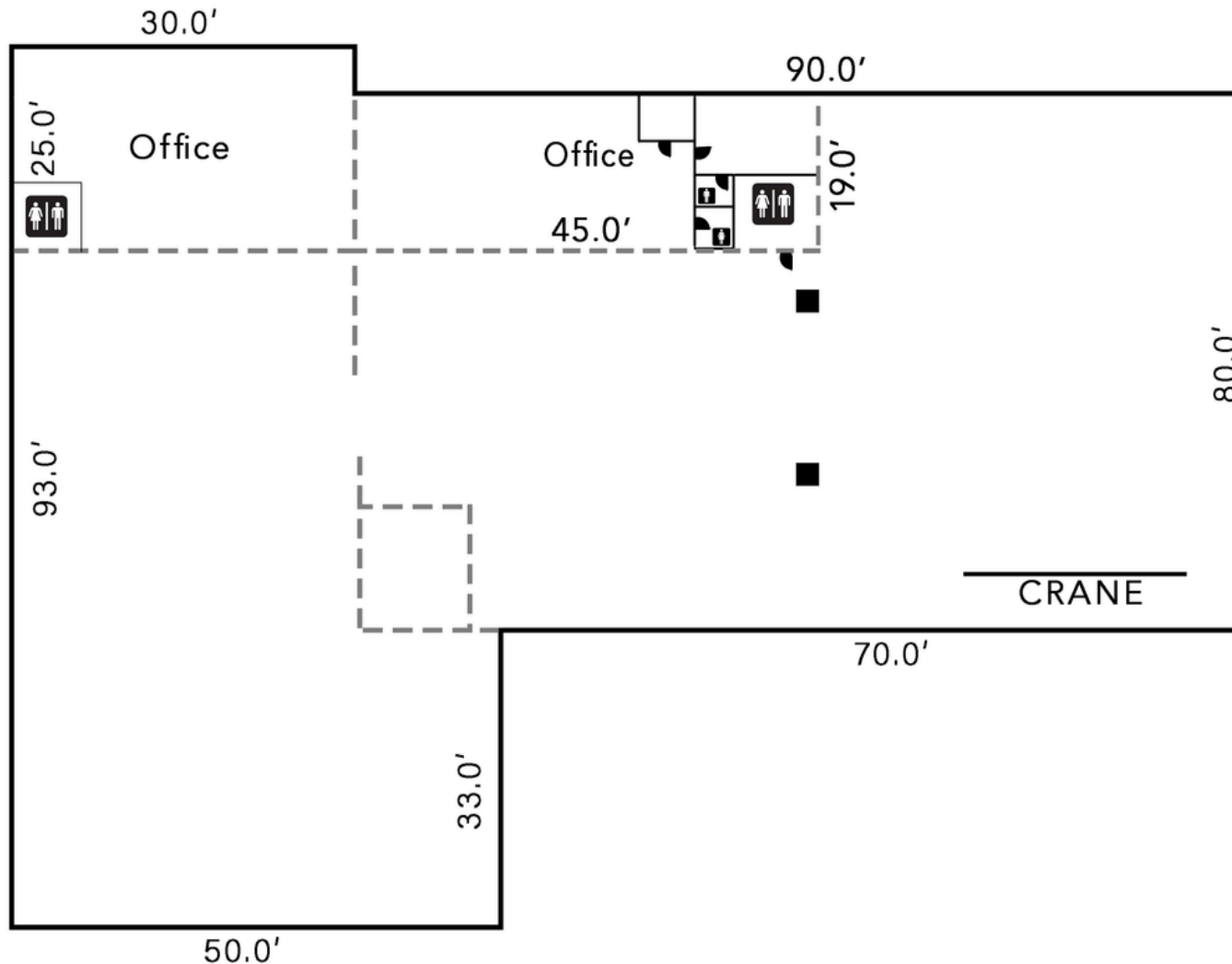


L. MASON CAPITANI

CORFAC INTERNATIONAL

CELEBRATING 60 YEARS

Floor Plan



248.637.9700 | LMCap.com

Information contained herein was obtained from sources deemed to be reliable but is not guaranteed. Subjects to prior sales, changes of price or withdrawal.