

# Burns & Wilcox BUILDING

RETAIL/OFFICE

# FOR LEASE

6,117-17,845 RSF AVAILABLE

119 STATE STREET  
DETROIT, MICHIGAN



**WORK. PLAY. LIVE.**

Capitol Park

# Burns & Wilcox BUILDING

## HIGHLIGHTS

41,103 SF landmark office building in the heart of Detroit's Capitol Park District

6,117-17,845 RSF available

Rooftop deck with exceptional city views for events and outdoor gatherings

A+ walkable location

Move-in ready spaces

Brand new building systems include: HVAC, roof, elevator, bathrooms, fire suppression, EMS system, security, plumbing

Easy access to Campus Martius, Woodward Ave, and sporting venues

Proximity to national retailers, restaurants, and numerous new development projects

Surrounded by numerous parking structures

**WORK. PLAY. LIVE.**  
Capitol Park

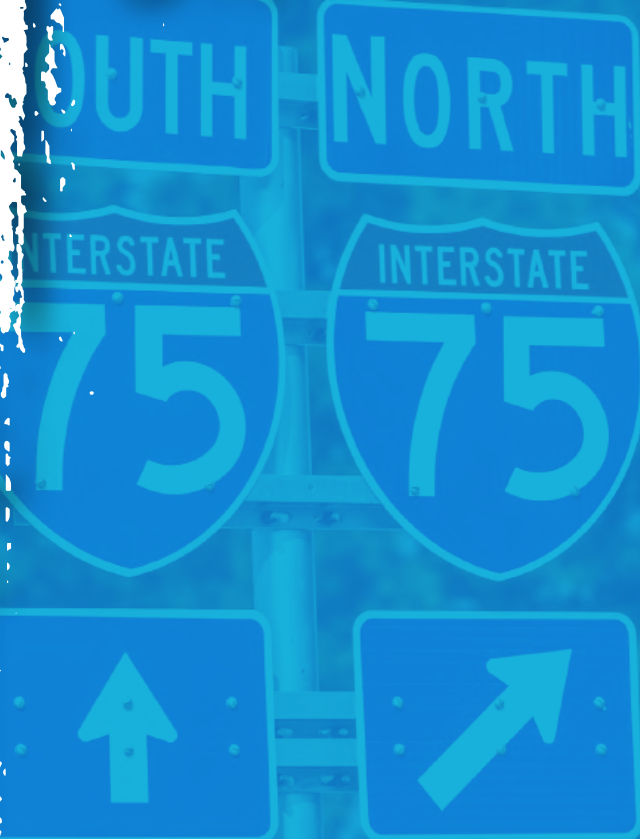
ALL RIGHTS ARE RESERVED. The material enclosed has been created and produced exclusively by Friedman Real Estate / Friedman Valuation Services. The content may not be copied, reproduced, transmitted, sold, distributed, downloaded, or transferred in any form or by any means without Friedman Real Estate's prior written consent. Violation of this provision may cause liability for damages.



**6** BLOCK DISTANCE TO  
Greektown



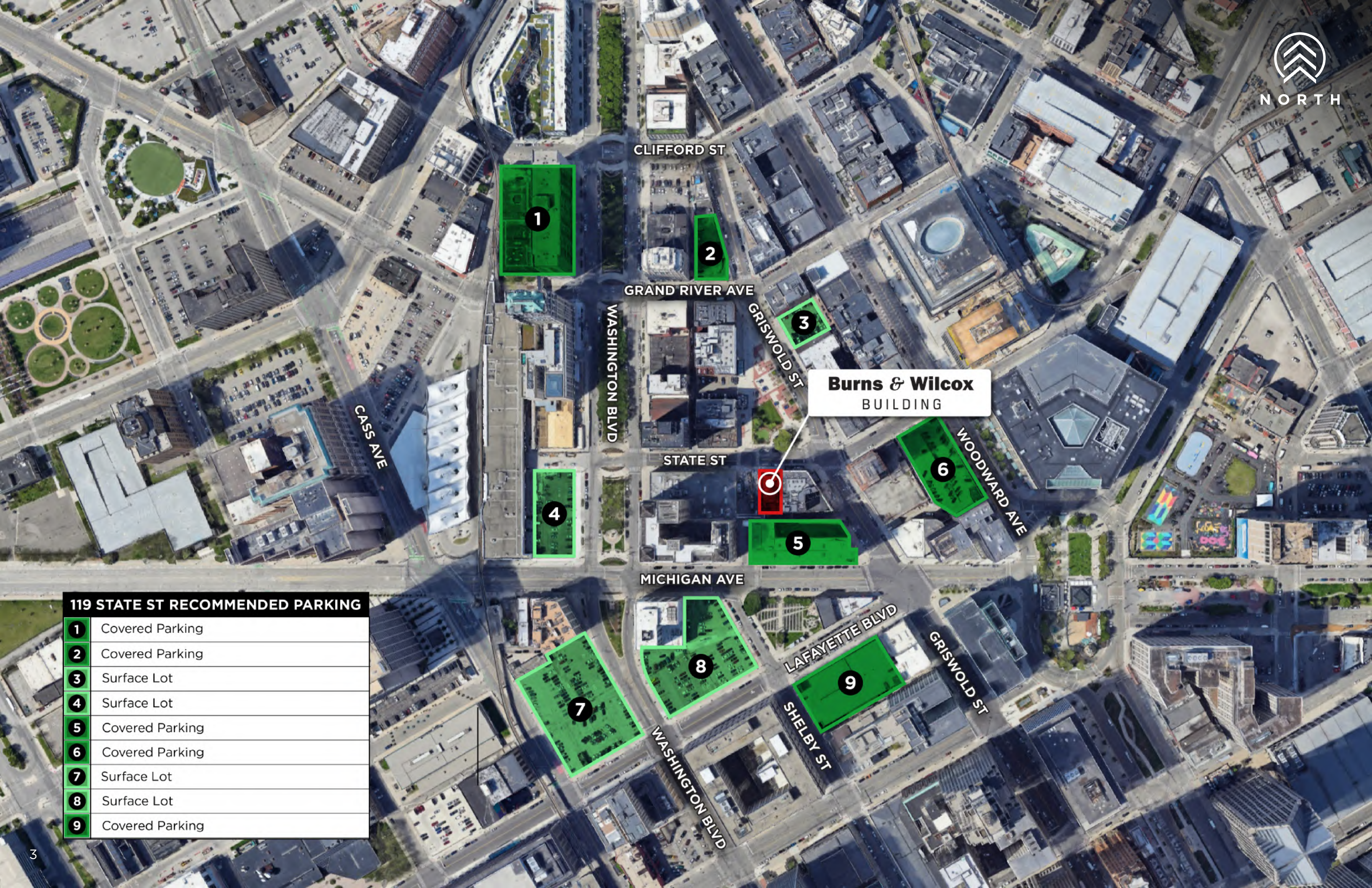
**5** MINUTE DRIVE  
I-75



**3** BLOCK DISTANCE TO  
Campus Martius



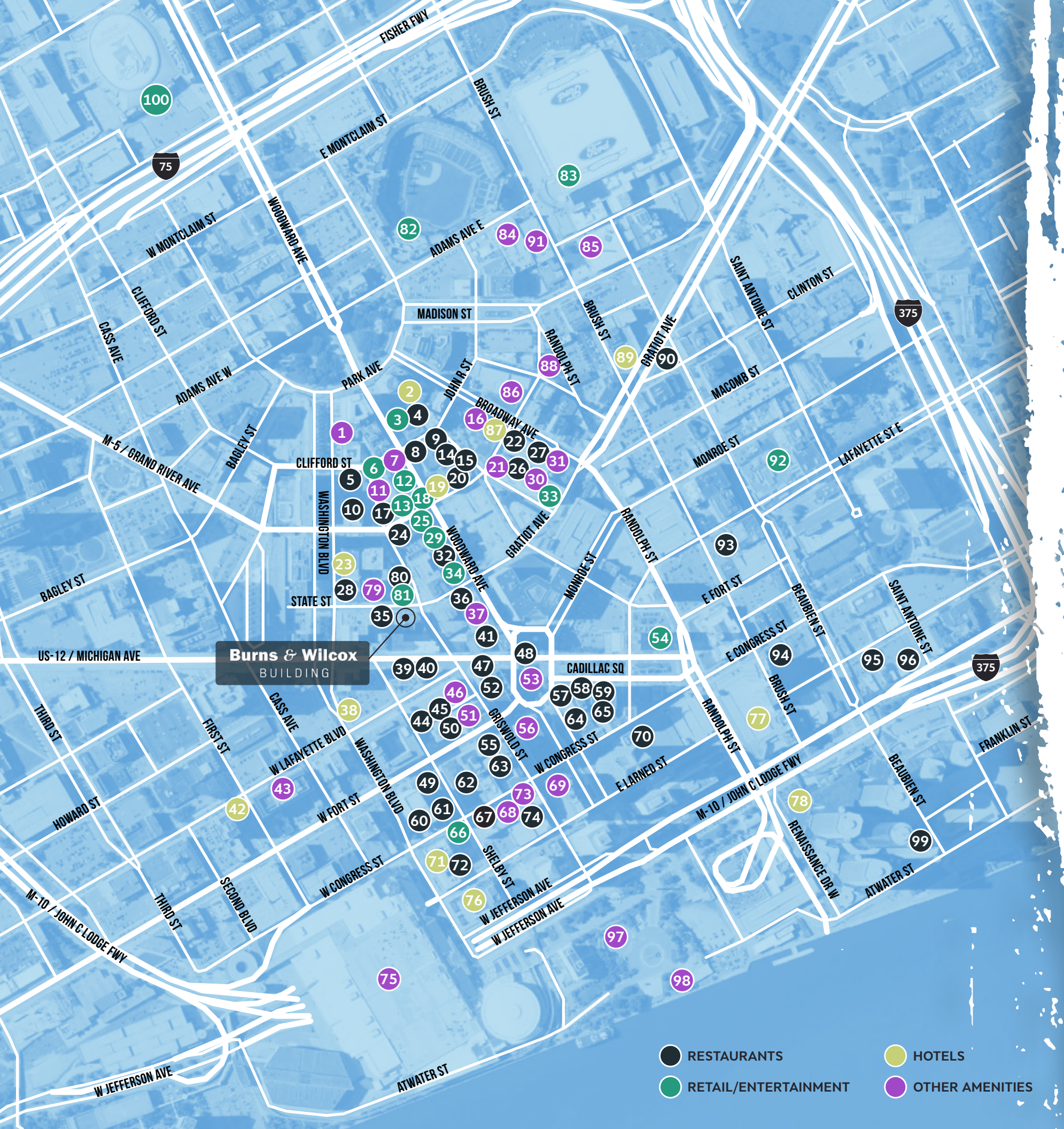
**7** BLOCK DISTANCE TO  
Hart Plaza & Detroit RiverWalk



**119 STATE ST RECOMMENDED PARKING**

1	Covered Parking
2	Covered Parking
3	Surface Lot
4	Surface Lot
5	Covered Parking
6	Covered Parking
7	Surface Lot
8	Surface Lot
9	Covered Parking

# AREA AMENITIES



- RESTAURANTS
- RETAIL/ENTERTAINMENT
- HOTELS
- OTHER AMENITIES

1. Blo Blow Dry Bar
2. Element Hotel
3. Greyson Clothiers
4. Wright & Co.
5. Café D'Mongo's
6. Lululemon
7. WeWork
8. Brakeman
9. Mister Dips
10. SPKRBOX
11. Pure Barre
12. Warby Parker
13. H&M
14. Cornerstone
15. Madcap Coffee Company
16. Boll Family YMCA
17. Lovers Only
18. Bonobos
19. Shinola Hotel
20. San Morello
21. Hair Lab by Detroit
22. One Mike (Formerly Punch Bowl Social)
23. Book Cadillac Hotel
24. Cannelle
25. Moosejaw
26. Vincente's
27. Seven Greens Salad
28. Roast
29. Nike
30. Citizen Yoga
31. The Belt
32. The Hudson Cafe
33. Nojo Kicks Detroit
34. Under Armor
35. Prime and Proper
36. Avalon Bakery
37. WeWork
38. Holiday Inn Express
39. Lafayette Coney
40. American Coney
41. Freshii
42. Double Tree
43. Comerica Bank
44. Maru Sushi
45. Dime Store
46. Anytime Fitness
47. Starbucks
48. Parc
49. Shelby Detroit
50. Bon Bon Bon
51. Fifth Third Bank
52. Potbelly
53. Campus Martius
54. 7-Eleven
55. Which Wich
56. Chase Bank
57. Grand Trunk
58. Central Kitchen & Bar
59. Shake Shack
60. Brome Burger
61. Balance Juice Bar
62. Caucus Club
63. Jimmy Johns
64. Besa
65. Roasting Plant
66. Trust Cocktails
67. London Chop House
68. UPS
69. Bank of America
70. Town House
71. Foundation Hotel
72. Apparatus Room
73. PNC
74. Dominos Pizza
75. TCF Center
76. Crown Plaza
77. Courtyard
78. Marriott
79. The Ten Nail Bar
80. Desert Oasis Coffee Roasters
81. Detroit Bikes
82. Comerica Park
83. Ford Field
84. Detroit Athletic Club
85. 36th District Court
86. Detroit Opera House
87. The Siren Hotel
88. Harmoine Park
89. Hilton Garden
90. Basement Burger Bar
91. Gem & Century Theaters
92. Greektown Casino
93. Niki's Pizza
94. Sweetwater Tavern
95. Minnie's Detroit
96. Nathan's Deli
97. Hart Plaza
98. Detroit RiverWalk
99. Panera Bread
100. Little Caesar's Arena

# Burns & Wilcox

## BUILDING

### AVAILABILITY:

LOWER LEVEL  
FIRST FLOOR  
THIRD FLOOR  
FOURTH FLOOR

CONTACT BROKER  
CONTACT BROKER  
6,117 SF  
6,117 SF

SIXTH FLOOR  
LEASED

FIFTH FLOOR  
LEASED

FOURTH FLOOR  
6,117 SF

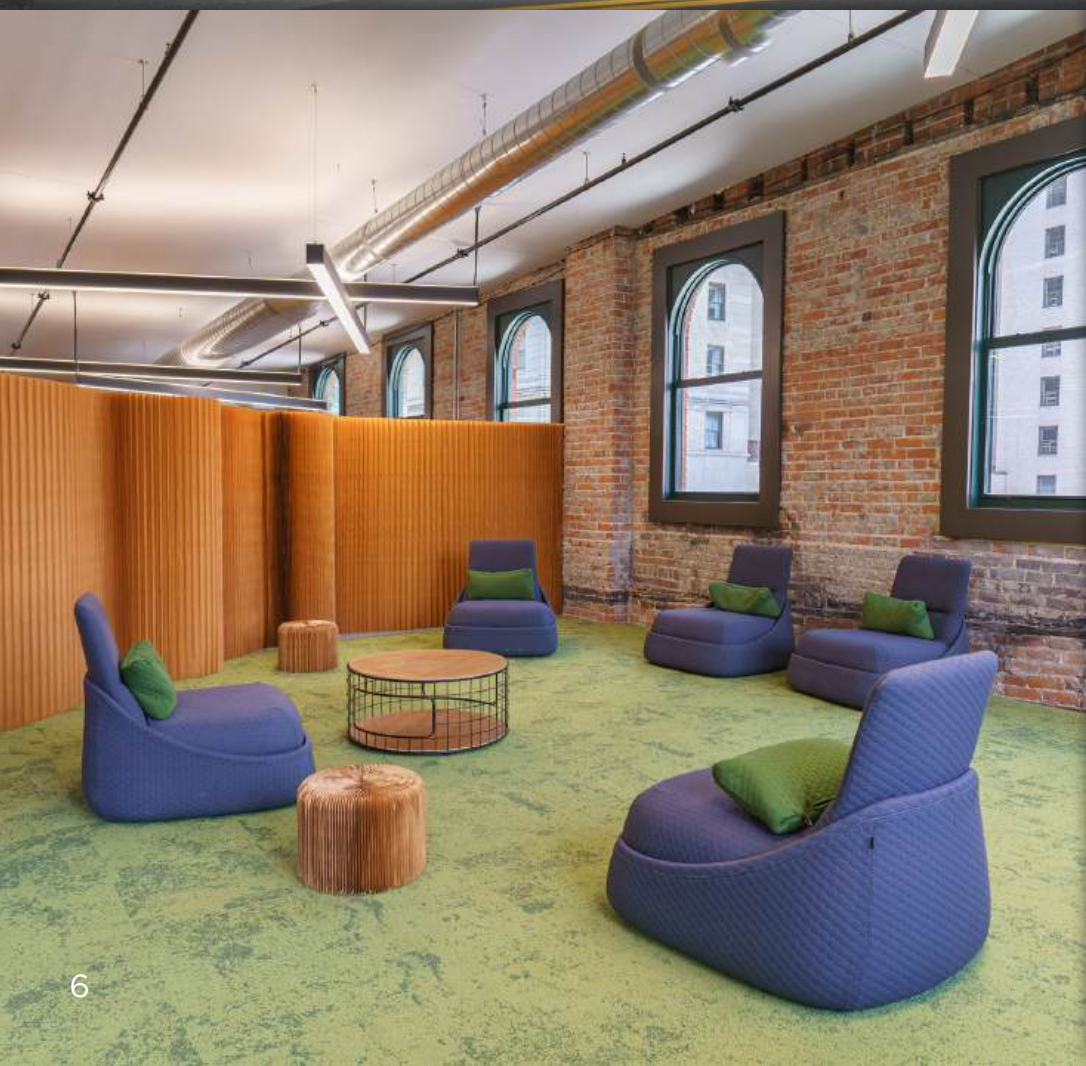
THIRD FLOOR  
6,117 SF

SECOND FLOOR  
LEASED

FIRST FLOOR  
CONTACT BROKER

LOWER LEVEL  
CONTACT BROKER

WORK. PLAY. LIVE.  
Capitol Park

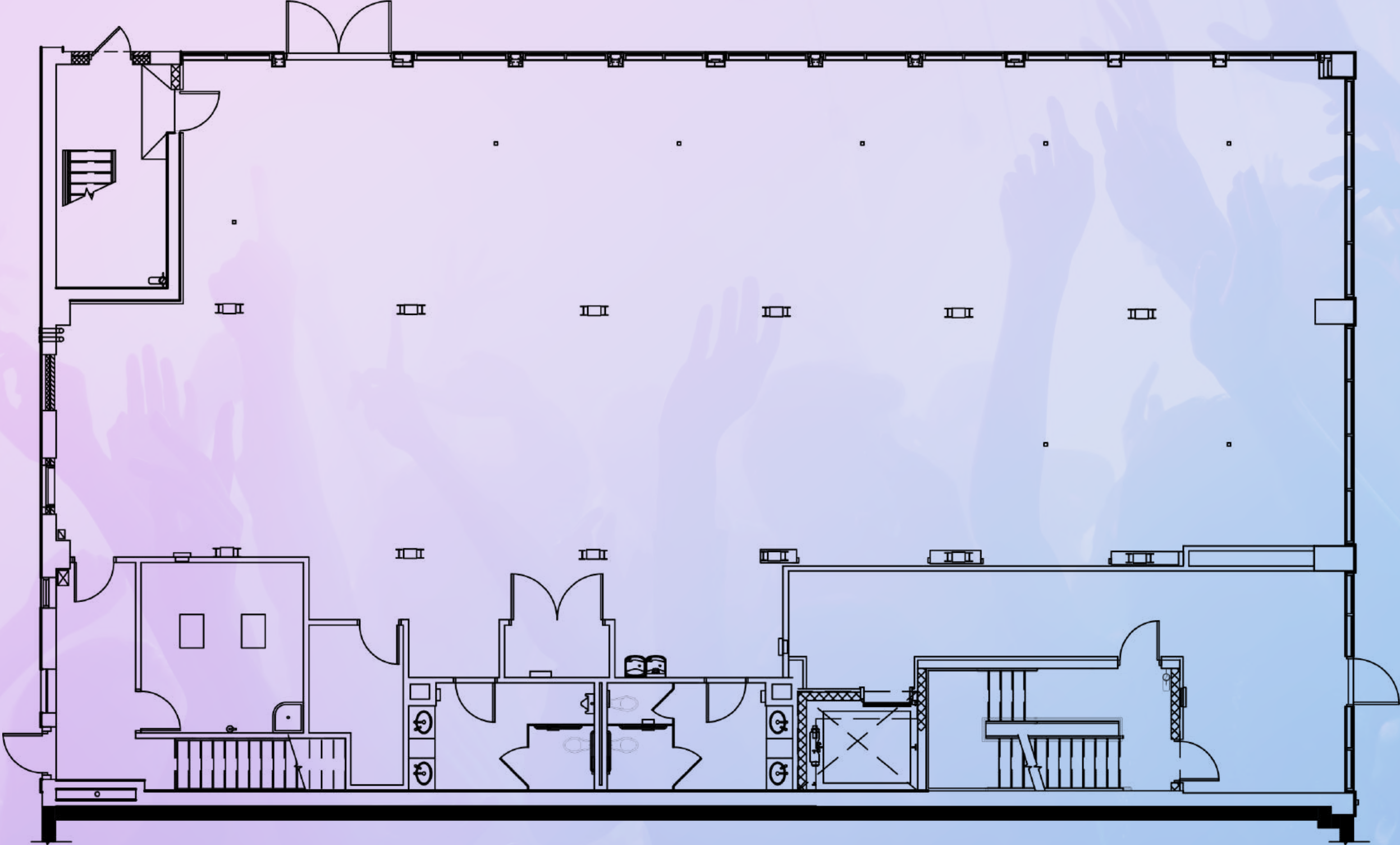


PROPERTY PHOTOS



ROOFTOP DECK **COMPLETED SUMMER 2024**

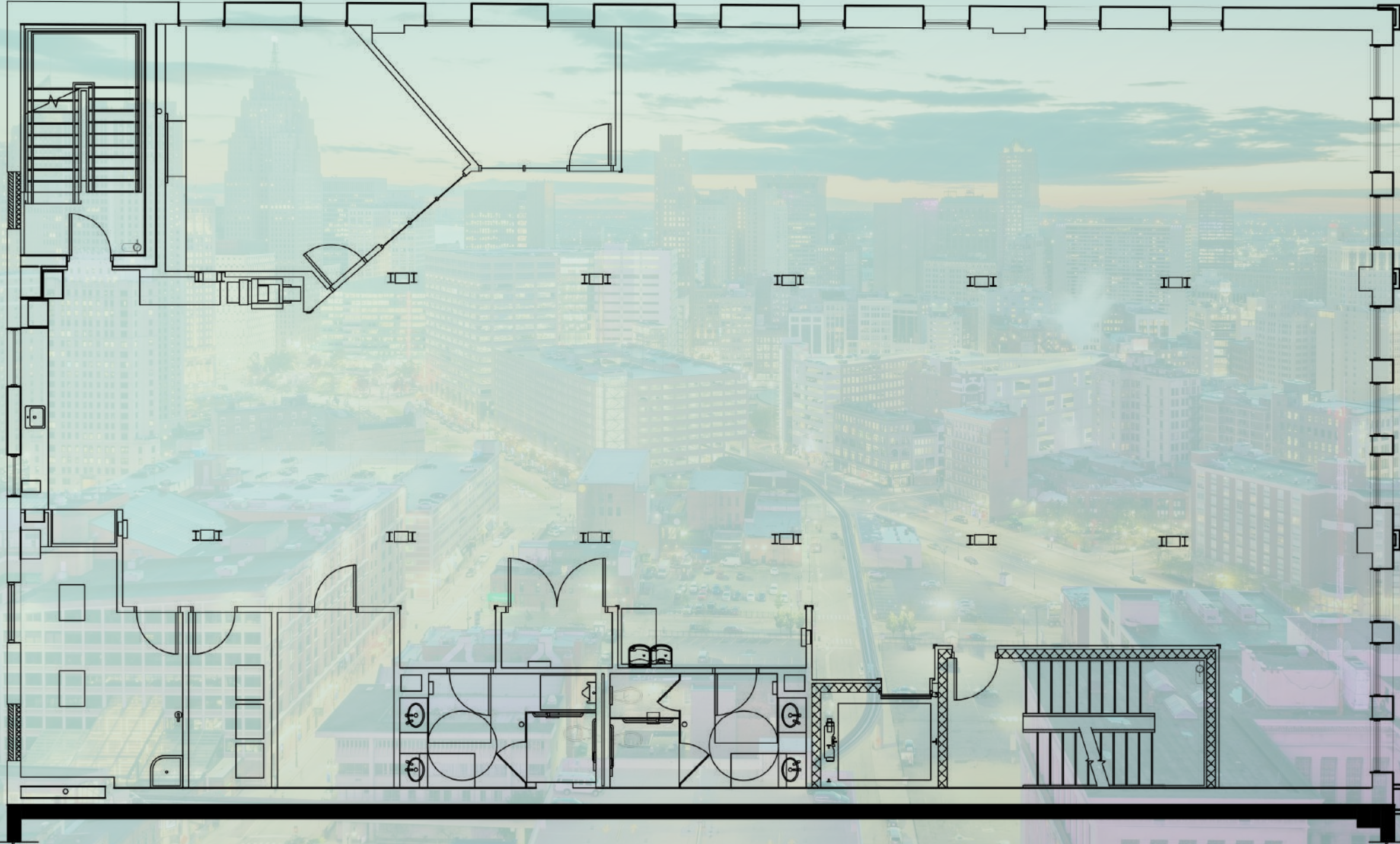
FIRST FLOOR



**WORK. PLAY. LIVE.**  
Capitol Park

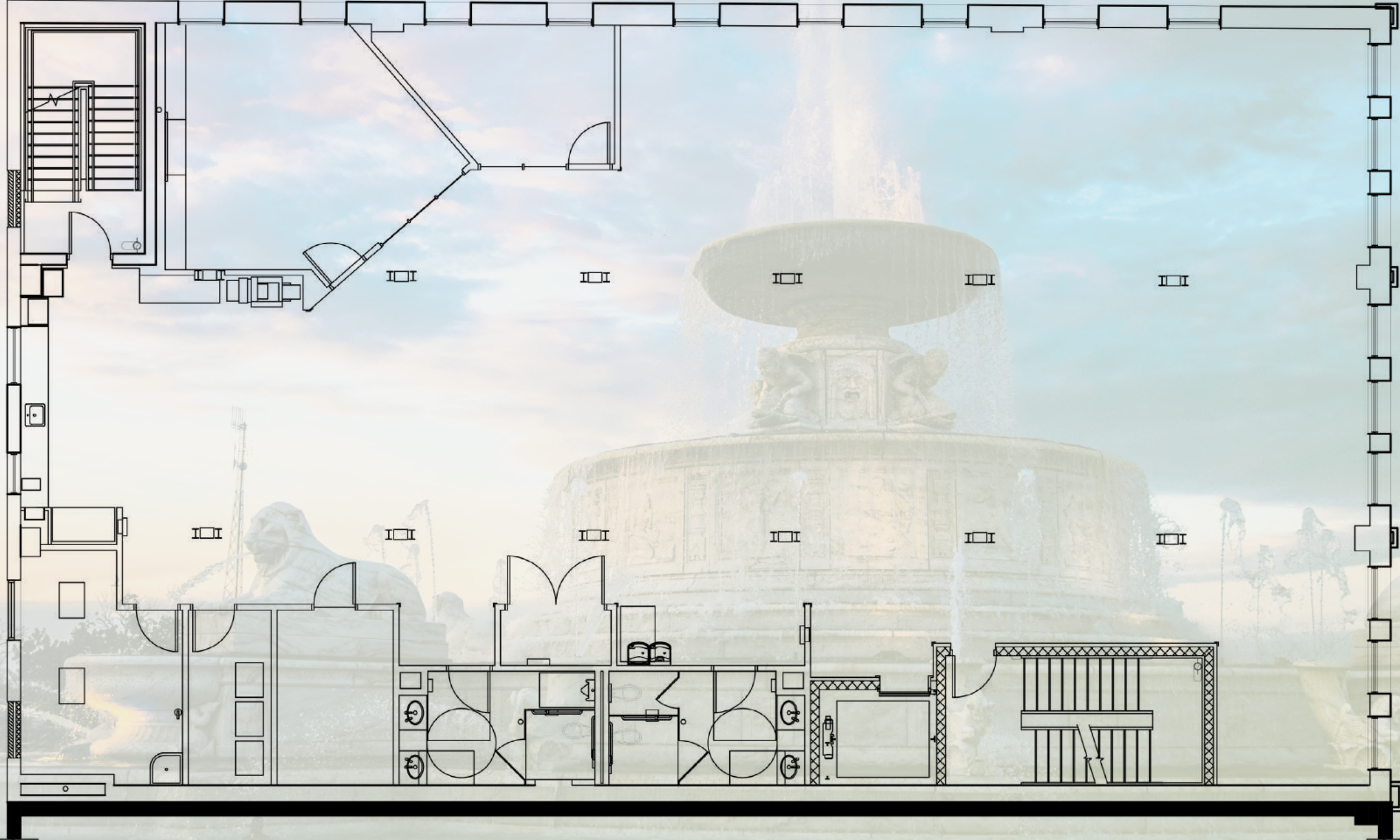


**THIRD FLOOR**



**WORK. PLAY. LIVE.**  
Capitol Park

**FOURTH FLOOR**



**WORK. PLAY. LIVE.**  
Capitol Park



NORTH



**Burns & Wilcox**  
BUILDING

CAPITOL PARK



STATE ST

SHEBLY ST



WOODWARD AVE

GRISWOLD ST

WASHINGTON BLVD



**WORK. PLAY. LIVE.**  
Capitol Park

# Burns & Wilcox BUILDING



**Steve Eisenshtadt**  
steve.eisenshtadt@freg.com



**Jordan Friedman**  
jordan.friedman@freg.com



**Andrew Bower**  
andrew.bower@freg.com



eCode 160

**VIRTUAL TOUR**

**Learn More**

FRIEDMANREALESTATE.COM | 248.324.2000



The information provided herein along with any attachment(s) was obtained from sources believed to be reliable, however, Friedman Real Estate makes no guarantees, warranties, or representations as to the completeness or accuracy of such information and legal counsel is advised. All information provided is subject to verification and no liability for reliance on such information or errors or omissions is assumed. The presentation of this property is submitted subject to errors, omissions, change of price or conditions, prior sale or lease, or withdrawal without notice. Copyright © 2018 Friedman Real Estate. All rights reserved.



**WORK. PLAY. LIVE.**  
Capitol Park