

4684

# FOR LEASE

±12,000 SF TWO STORY OFFICE BUILDING  
PART OF THE MASTER PLANNED PARKWAY BUSINESS CENTER  
4684 ONTARIO MILLS PKWY | BLDG 6 | ONTARIO | CA



±12,000 SF TWO  
STORY BUILDING



FIRST & SECOND  
FLOOR DIVISIBLE



PART OF MASTER  
PLANNED PARKWAY  
BUSINESS CENTER



CLOSE PROXIMITY  
TO RETAIL &  
RESTAURANTS



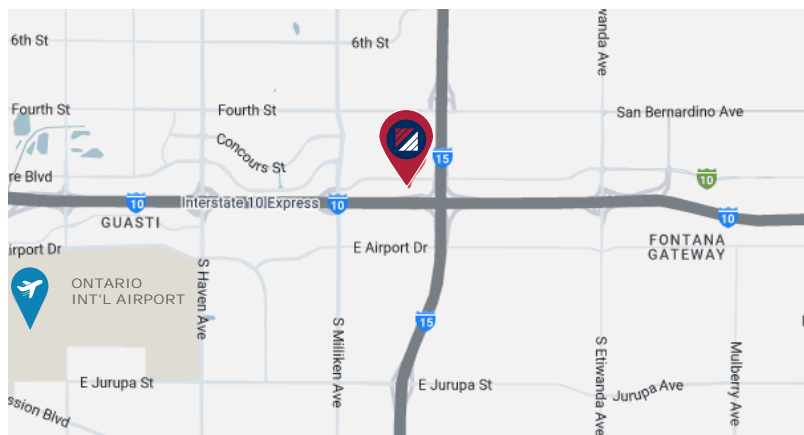
EASY ACCESS TO  
10, 15 & 60 FWY



NEAR ONTARIO  
INT'L AIRPORT

## PROPERTY HIGHLIGHTS:

- ±6,000 - ±12,000 SF Available
- First and Second Floor Divisible
- Part of the Master Planned Parkway Business Center Built in 2008
- Easy Access to the 10, 15 & 60 Freeways
- Close Proximity to Retail and Restaurant Amenities



## FOR MORE INFORMATION, PLEASE CONTACT:

### LEE SPENCE

EXECUTIVE VICE PRESIDENT  
P: 909.652.9044  
lee.spence@daumcommercial.com  
CA DRE#: 00954487

### MARK SCHAFFER

EXECUTIVE VICE PRESIDENT  
P: 909.652.9052  
mark.schafer@daumcommercial.com  
CA DRE#: 01902664





# PHOTOS



**\*FURNITURE NOT INCLUDED**



**FOR MORE INFORMATION, PLEASE CONTACT:**

**LEE SPENCE**

EXECUTIVE VICE PRESIDENT

P: 909.652.9044

lee.spence@daumcommercial.com

CA DRE#: 00954487

**MARK SCHAFFER**

EXECUTIVE VICE PRESIDENT

P: 909.652.9052

mark.schafer@daumcommercial.com

CA DRE#: 01902664

**DAUM**  
COMMERCIAL REAL ESTATE SERVICES

D/AQ Corp. #01129558. Maps Courtesy ©Google & ©Microsoft. Although all information is furnished regarding for sale, rental or financing from sources deemed reliable, such information has not been verified and no express representation is made nor is any to be implied as to the accuracy thereof, and it is submitted subject to errors, omissions, changes of price, rental or other conditions, prior sale, lease or financing, or withdrawal without notice.

[www.daumcommercial.com](http://www.daumcommercial.com)



## PHOTOS



**\*FURNITURE NOT INCLUDED**



**FOR MORE INFORMATION, PLEASE CONTACT:**

### **LEE SPENCE**

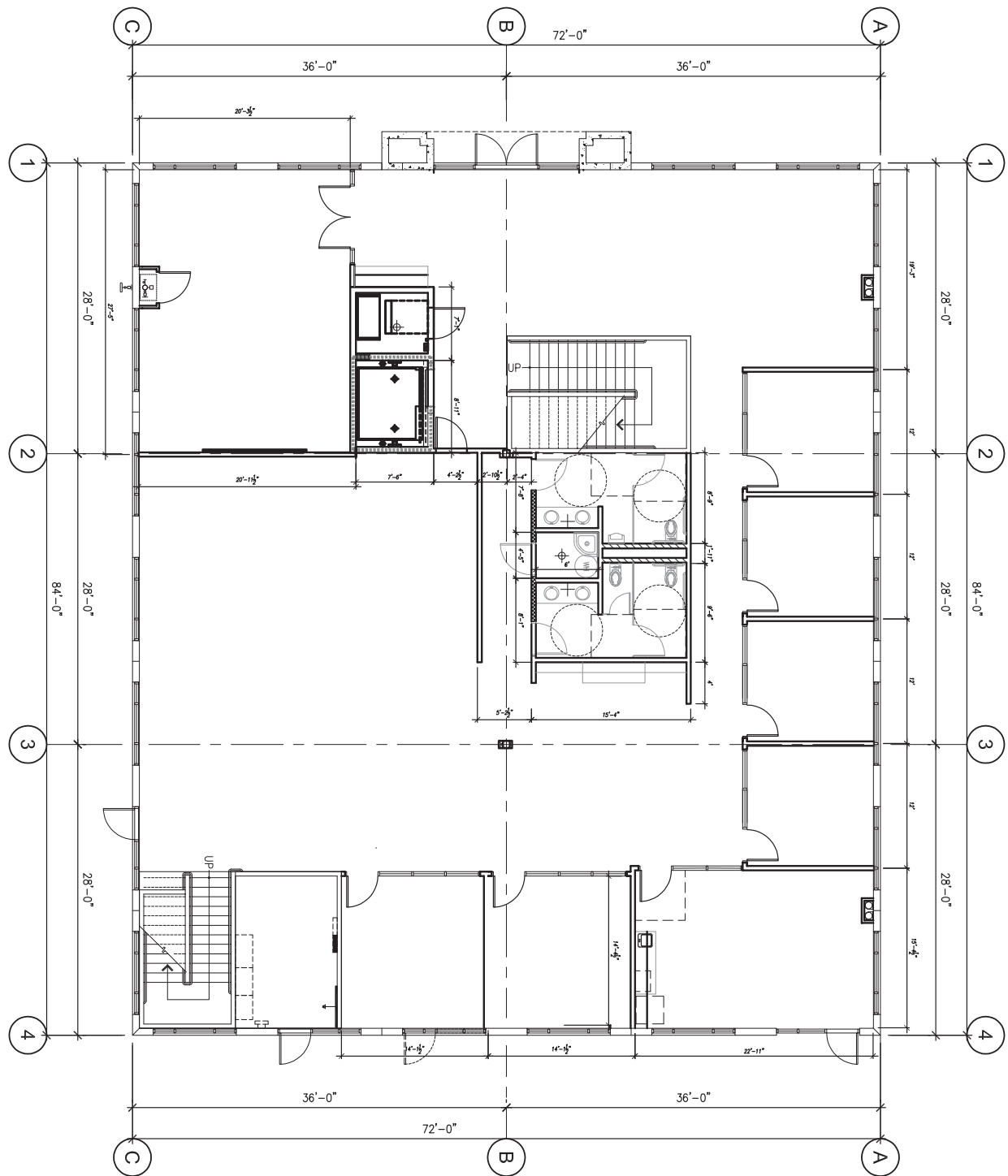
EXECUTIVE VICE PRESIDENT  
P: 909.652.9044  
lee.spence@daumcommercial.com  
CA DRE#: 00954487

### **MARK SCHAFER**

EXECUTIVE VICE PRESIDENT  
P: 909.652.9052  
mark.schafer@daumcommercial.com  
CA DRE#: 01902664

**DAUM**  
COMMERCIAL REAL ESTATE SERVICES

# FIRST FLOOR PLAN



\*NOT TO SCALE

FOR MORE INFORMATION, PLEASE CONTACT:

**LEE SPENCE**

EXECUTIVE VICE PRESIDENT

P: 909.652.9044

lee.spence@daumcommercial.com

CA DRE#: 00954487

**MARK SCHAFFER**

EXECUTIVE VICE PRESIDENT

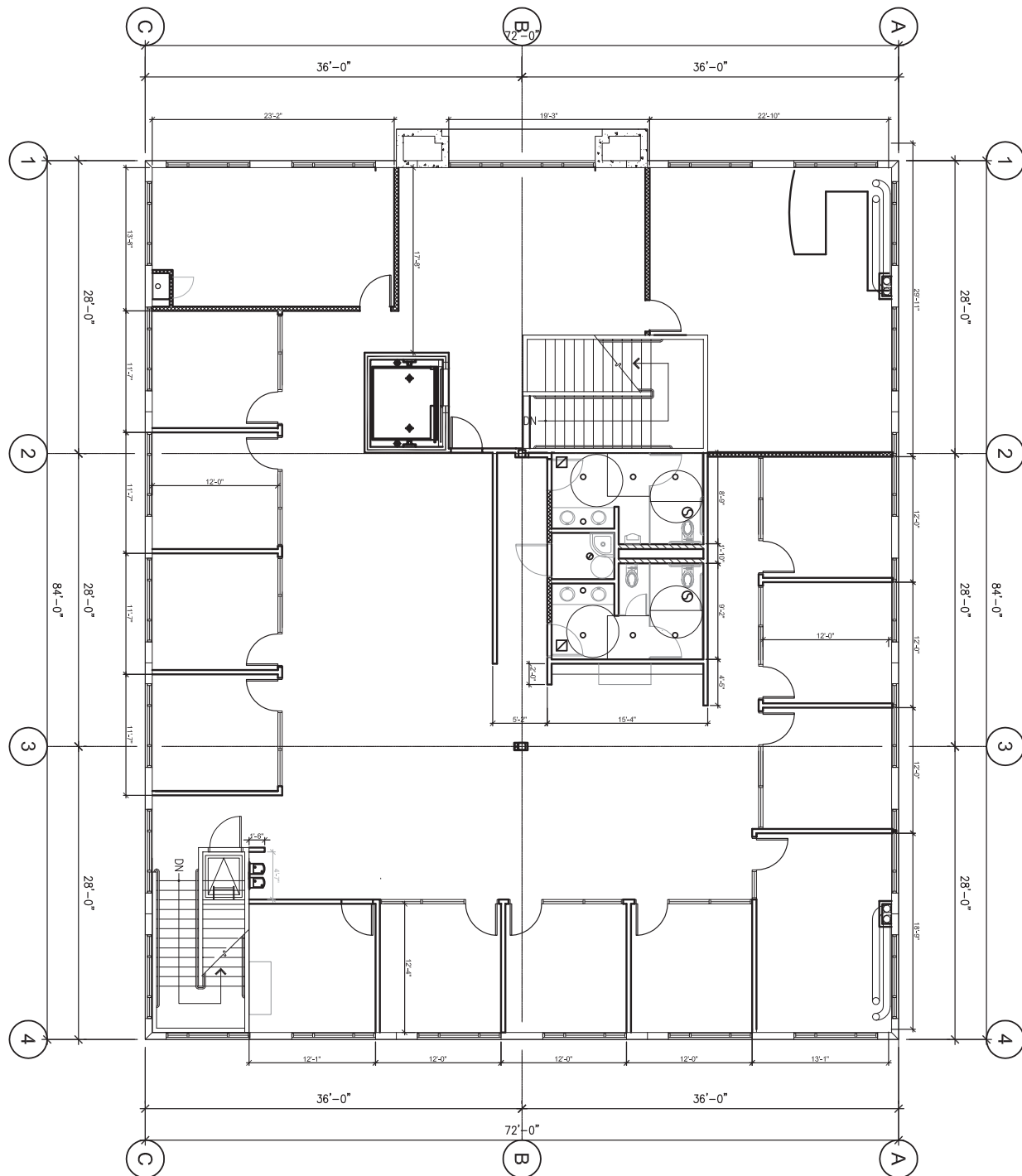
P: 909.652.9052

mark.schafer@daumcommercial.com

CA DRE#: 01902664

**DAUM**  
COMMERCIAL REAL ESTATE SERVICES

## SECOND FLOOR PLAN



\*NOT TO SCALE

FOR MORE INFORMATION, PLEASE CONTACT:

### LEE SPENCE

EXECUTIVE VICE PRESIDENT  
P: 909.652.9044  
lee.spence@daumcommercial.com  
CA DRE#: 00954487

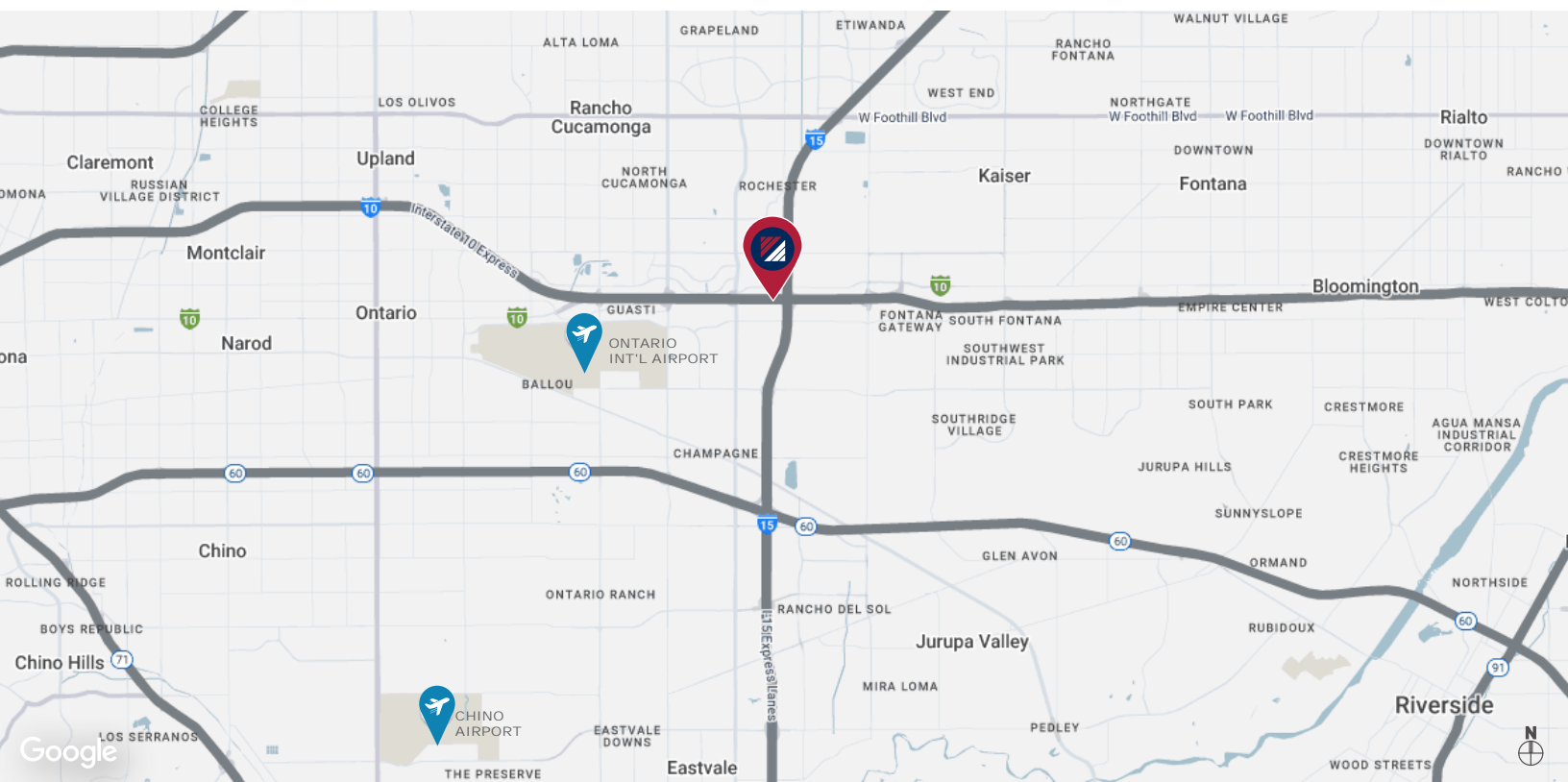
### MARK SCHAFFER

EXECUTIVE VICE PRESIDENT  
P: 909.652.9052  
mark.schafer@daumcommercial.com  
CA DRE#: 01902664





# AERIAL AND LOCATION MAP



FOR MORE INFORMATION, PLEASE CONTACT:

## LEE SPENCE

EXECUTIVE VICE PRESIDENT  
P: 909.652.9044  
lee.spence@daumcommercial.com  
CA DRE#: 00954487

## MARK SCHAFFER

EXECUTIVE VICE PRESIDENT  
P: 909.652.9052  
mark.schafer@daumcommercial.com  
CA DRE#: 01902664

