

FOR LEASE > OFFICE SPACE

5905-5909 Christie Avenue

EMERYVILLE, CA 94608



Unique Brick & Timber Office Building *Two Suites Available*

Property Features

- > **5905 Christie Avenue:** 15,448 Square feet which includes 1,142 square feet of open mezzanine perfect for meetings or flex space
- > **5909 Christie Avenue:** 4,910 Square feet that can be contiguous with 5905 Christie Avenue
- > High ceilings, natural light
- > Open floor plan
- > Private offices
- > Kitchen
- > Conference rooms
- > ±3/1,000 FREE parking
- > Showers

Lease Rate: \$4.00/SF, IG

Contact

AILEEN DOLBY

+1 510 433 5815

aileen.dolby@colliers.com

CA License No. 00949630

COLLIERS INTERNATIONAL

1999 Harrison Street, Ste. 1750

Oakland, CA 94612

+1 510 986 6770

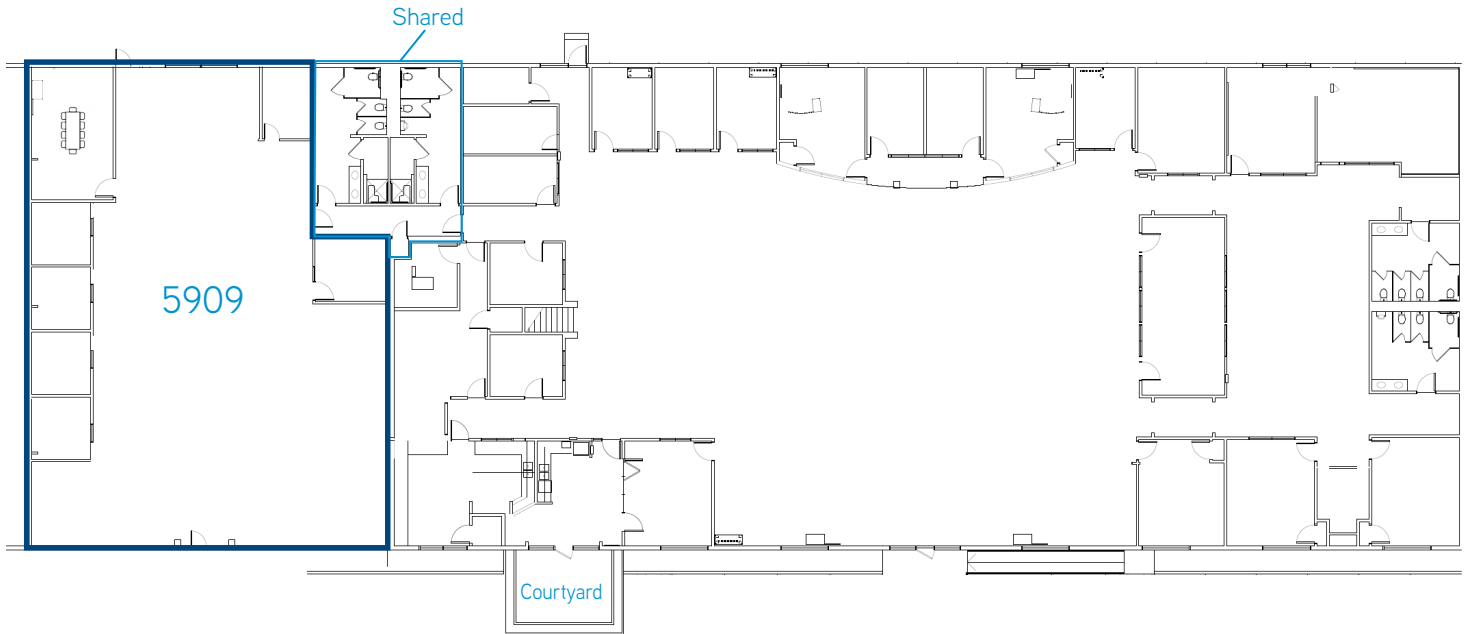
www.colliers.com/oakland

FOR LEASE > OFFICE SPACE



5905-5909 Christie Avenue

EMERYVILLE, CA 94608



Local Amenities

- > Abundant employee amenities within walking distance
- > Low business taxes
- > Ample employee housing
- > Convenient to Amtrak
- > Free shuttle to retail and BART
- > Adjacent to I-80 exit and the Bay Bridge

Contact

AILEEN DOLBY
+1 510 433 5815
aileen.dolby@colliers.com
CA License No. 00949630