

COMING SOON

11205 West 40th Ave,
Hialeah, FL 33018



CONTACT
FOR DETAILS

RENE VIVO, SIOR

✉ rvivo@vivogroup.net

☎ 305-785-4905



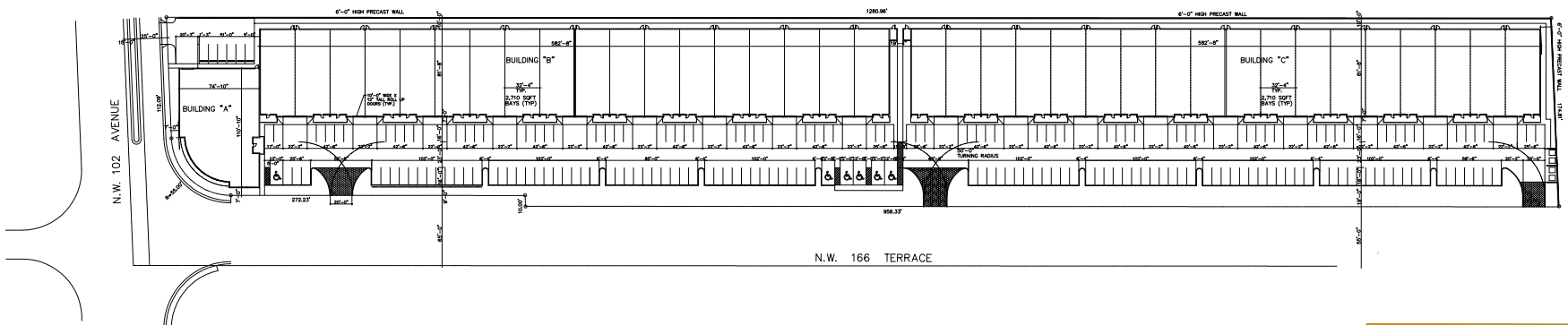
PROPERTY DESCRIPTION

PROPERTY FEATURES

WAREHOUSE (SF)	±105,360 SF
BAYS (SF)	(38) 2,750 SF Bays Total
HVAC	HVAC-equipped office areas
PARKING SPACES	204
CEILING HEIGHT	20' clear ceiling height
DOORS	10' x 14' grade-level roll-up doors
POWER	200 Amp / 3-phase power

Introducing a premier industrial development opportunity in Hialeah, Florida. Strategically located at 11205 West 40th Avenue, one of South Florida's most connected and high-demand logistics corridors. This new project offers exceptional accessibility and unmatched functionality for a wide range of industrial users.

SITE PLAN



PROPERTY LOCATION



Downtown Miami
Distance: 11 miles



Florida's Turnpike
Distance: 1 mile



Palmetto Expy (SR-826)
Distance: 3.5 miles



Miami Int. Airport
Distance: 8 miles



NW 170TH ST



NW 102ND AVE

PROPERTY LOCATION

Situated just 7.5 miles from Miami International Airport, 18 miles from Port Miami, and minutes from key transportation arteries including the Palmetto Expressway (SR 826), I-75, US-27/Okeechobee Road, and the Florida Turnpike, this location provides seamless regional and international connectivity ideal for distribution, manufacturing, and logistics operations.

Designed for flexibility, efficiency, and modern industrial demand, this development represents a rare opportunity to secure new-construction space in the heart of Hialeah's thriving industrial market.

