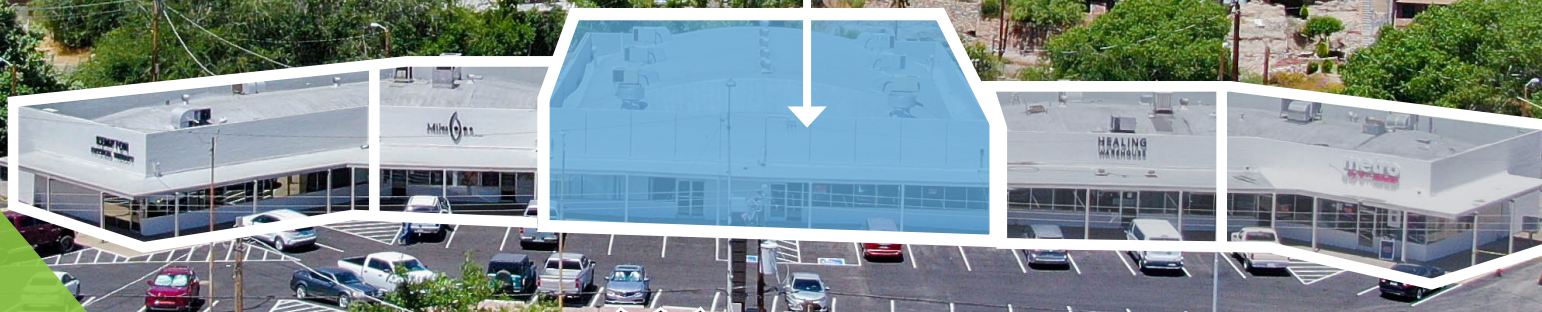


LAST REMAINING SPACE FOR LEASE CAN BE DEMISED

CRE8
ADVISORS

8,965 SF
AVAILABLE
(DIVISIBLE)

1100 N. BROAD ST.
GLOBE, AZ



BROAD STREET (21,000 CPD)

Rommie Mojahed
602.702.4663
Rommie@CRE8Advisors.com

Chad Shipley
480.220.5954
Chad@CRE8Advisors.com

PROPERTY SUMMARY

1100 N. BROAD STREET
GLOBE, AZ



PROPERTY HIGHLIGHTS

- Call for Pricing
- 8,965 SF - Last Space Available which can be demised
- Located on at the entrance to Globe's Downtown Historic district on the main arterial US60 with over 21,000 CPD
- Property has undergone \$550K worth of improvements including signage, parking lot and lighting
- Prominent building with ample parking and monument signage available
- The property is central to the neighboring communities of Miami, Claypool, Superior, Roosevelt Hayden, Kearney & San Carlos.

PROPERTY DEMOGRAPHICS

	3 MILE	5 MILE	10 MILE
2023 Population:	11,106	14,073	14,696
2028 Population	14,073	13,593	14,162
# of Households:	4,289	5,439	5,702
Average Household Income:	\$66,432	\$64,146	\$64,049

PROPERTY SUMMARY

ASKING RENT:	CALL FOR PRICING
AVAILABLE SF:	1,000 - 8,965
LAND AREA:	2.14 ACRES
BUILDING SF:	19,242 SF
APN:	207-15-077A

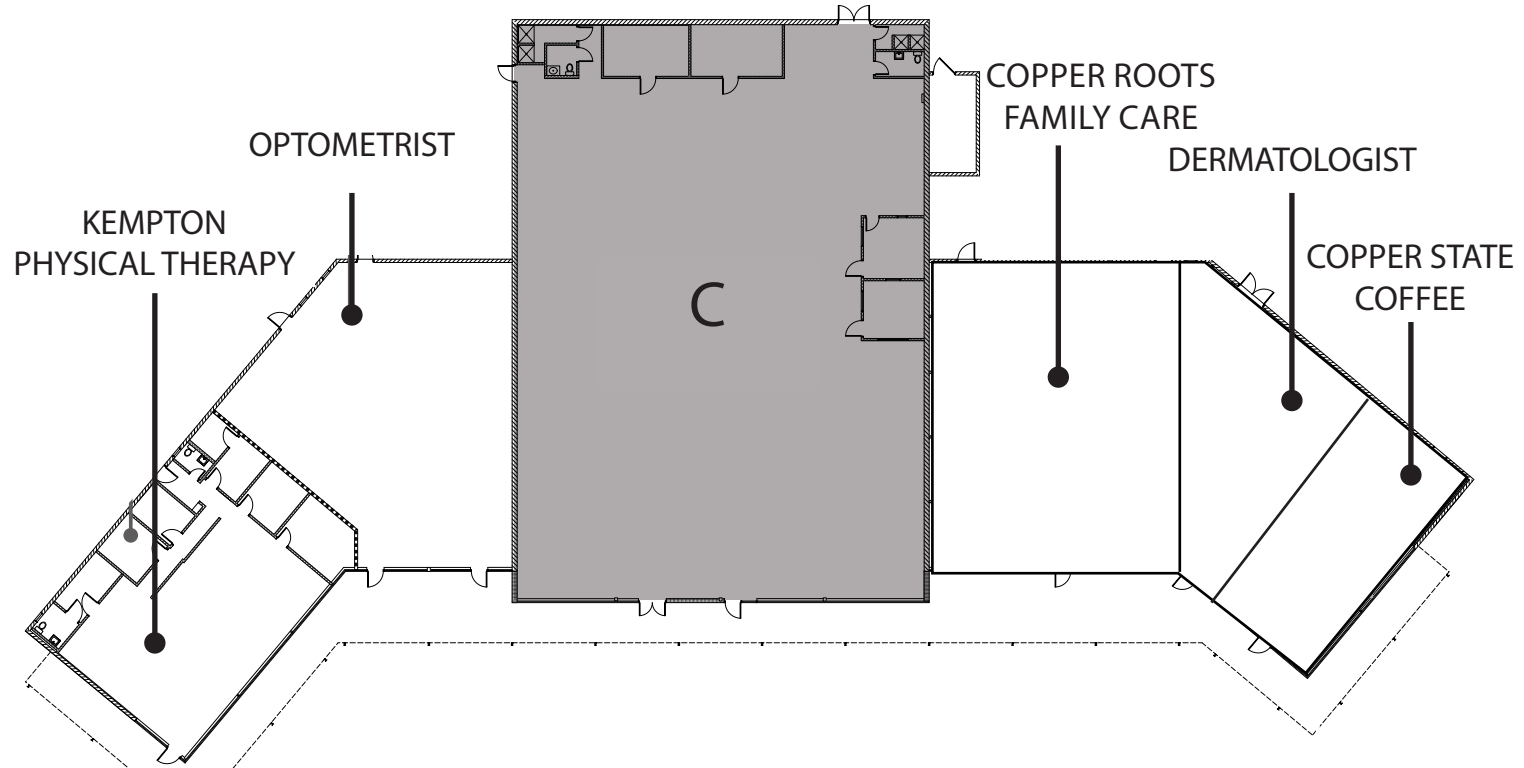
AERIAL MAP

1100 N. BROAD STREET
GLOBE, AZ



FLOORPLAN

1100 N. BROAD STREET
GLOBE, AZ





For Additional details contact the team
by phone at: (602) 888. CRE8
or by email: Lindsey@CRE8Advisors.com