

LARGE PRICE REDUCTION!



1810-1818 W. MADISON
MAYWOOD, ILLINOIS

AVAILABLE FOR SALE

41,200 SF BUILDING ON 1.76 ACRES

HEAVY POWER
ZONED M1

FOR MORE INFORMATION:

MICHAEL MAGLIANO
Executive Managing Director

+1 847 518 3259
michael.magliano@cushwake.com

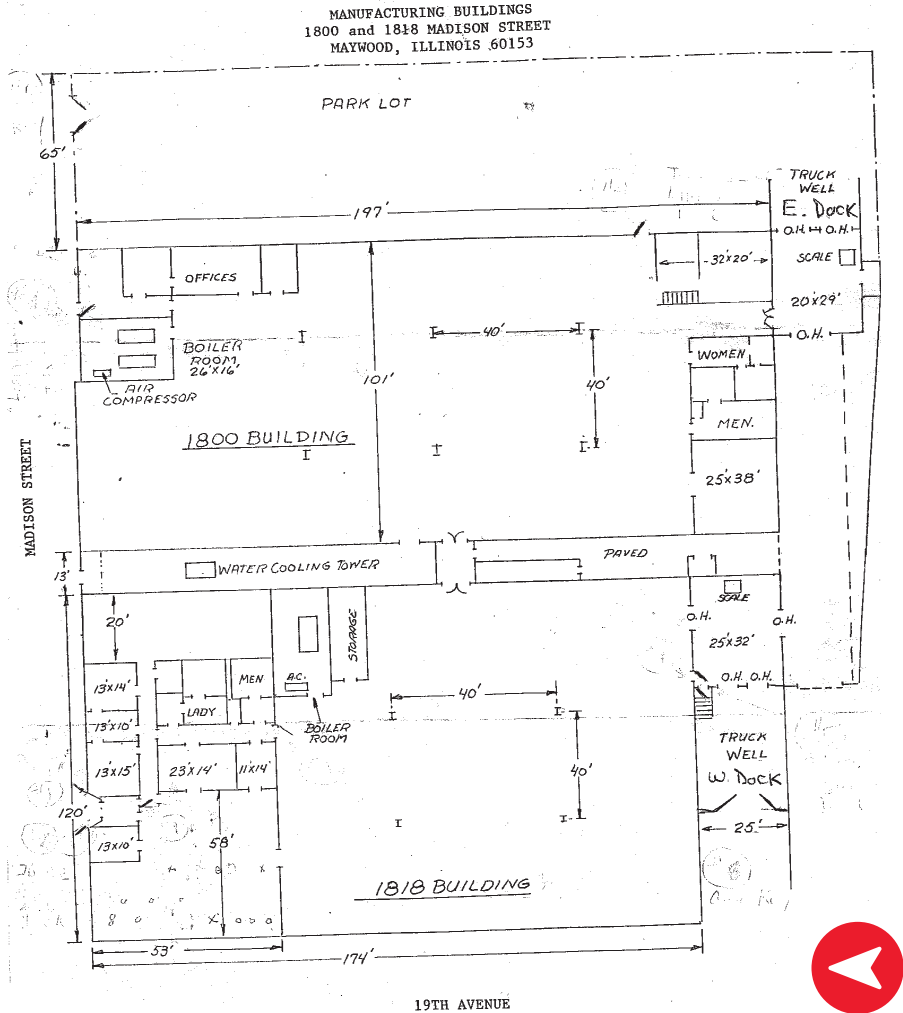
IVAN RAVELO
Associate

+1 312 470 1838
ivan.ravelo@cushwake.com



SITE PLAN

1810-1818 W. MADISON, MAYWOOD, IL



BUILDING HIGHLIGHTS

41,200 SF
AVAILABLE SIZE

7,360 SF
OFFICE SIZE

1.76 AC
LAND SIZE

14'8"
CLEAR HEIGHT

4
EXTERIOR DOCKS

1
DRIVE-IN DOOR

30
CAR STALLS

M1
ZONING

HEAVY
POWER

AIR LINES
BUILDING 1

FULLY
SPRINKLERED

LARGE PRICE REDUCTION!

\$750,000.00 (\$18.20 PSF)

SALE PRICE

©2024 Cushman & Wakefield. All rights reserved. The information contained in this communication is strictly confidential. This information has been obtained from sources believed to be reliable but has not been verified. NO WARRANTY OR REPRESENTATION, EXPRESS OR IMPLIED, IS MADE AS TO THE CONDITION OF THE PROPERTY (OR PROPERTIES) REFERENCED HEREIN OR AS TO THE ACCURACY OR COMPLETENESS OF THE INFORMATION CONTAINED HEREIN, AND SAME IS SUBMITTED SUBJECT TO ERRORS, OMISSIONS, CHANGE OF PRICE, RENTAL OR OTHER CONDITIONS, WITHDRAWAL WITHOUT NOTICE, AND TO ANY SPECIAL LISTING CONDITIONS IMPOSED BY THE PROPERTY OWNER(S). ANY PROJECTIONS, OPINIONS OR ESTIMATES ARE SUBJECT TO UNCERTAINTY AND DO NOT SIGNIFY CURRENT OR FUTURE PROPERTY PERFORMANCE.

FOR MORE INFORMATION:

MICHAEL MAGLIANO
Executive Managing Director

+1 847 518 3259
michael.magliano@cushwake.com

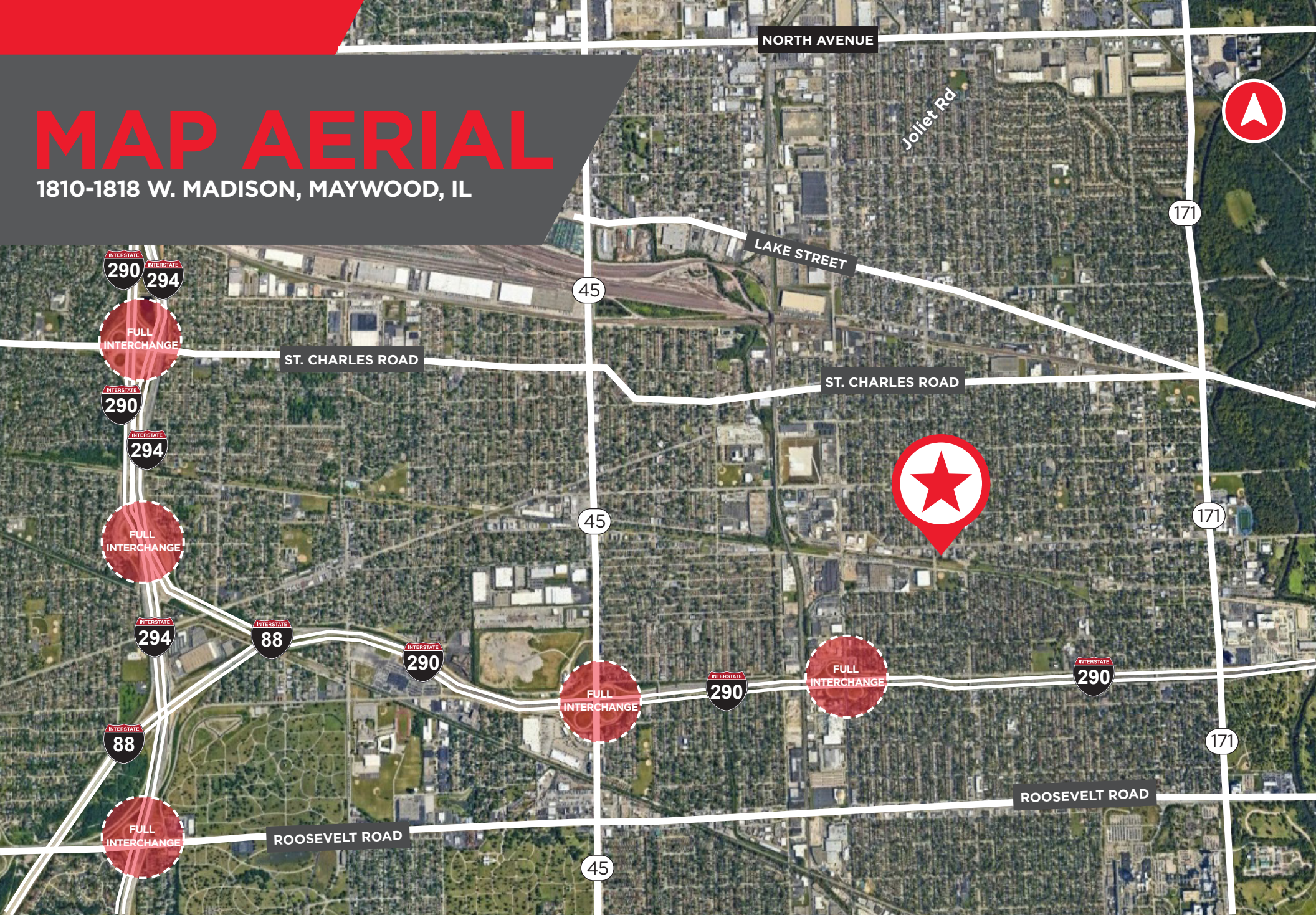
IVAN RAVELO
Associate

+1 312 470 1838
ivan.ravelo@cushwake.com



MAP AERIAL

1810-1818 W. MADISON, MAYWOOD, IL



FOR MORE INFORMATION:

MICHAEL MAGLIANO
Executive Managing Director

+1 847 518 3259
michael.magliano@cushwake.com

IVAN RAVELO
Associate

+1 312 470 1838
ivan.ravelo@cushwake.com

