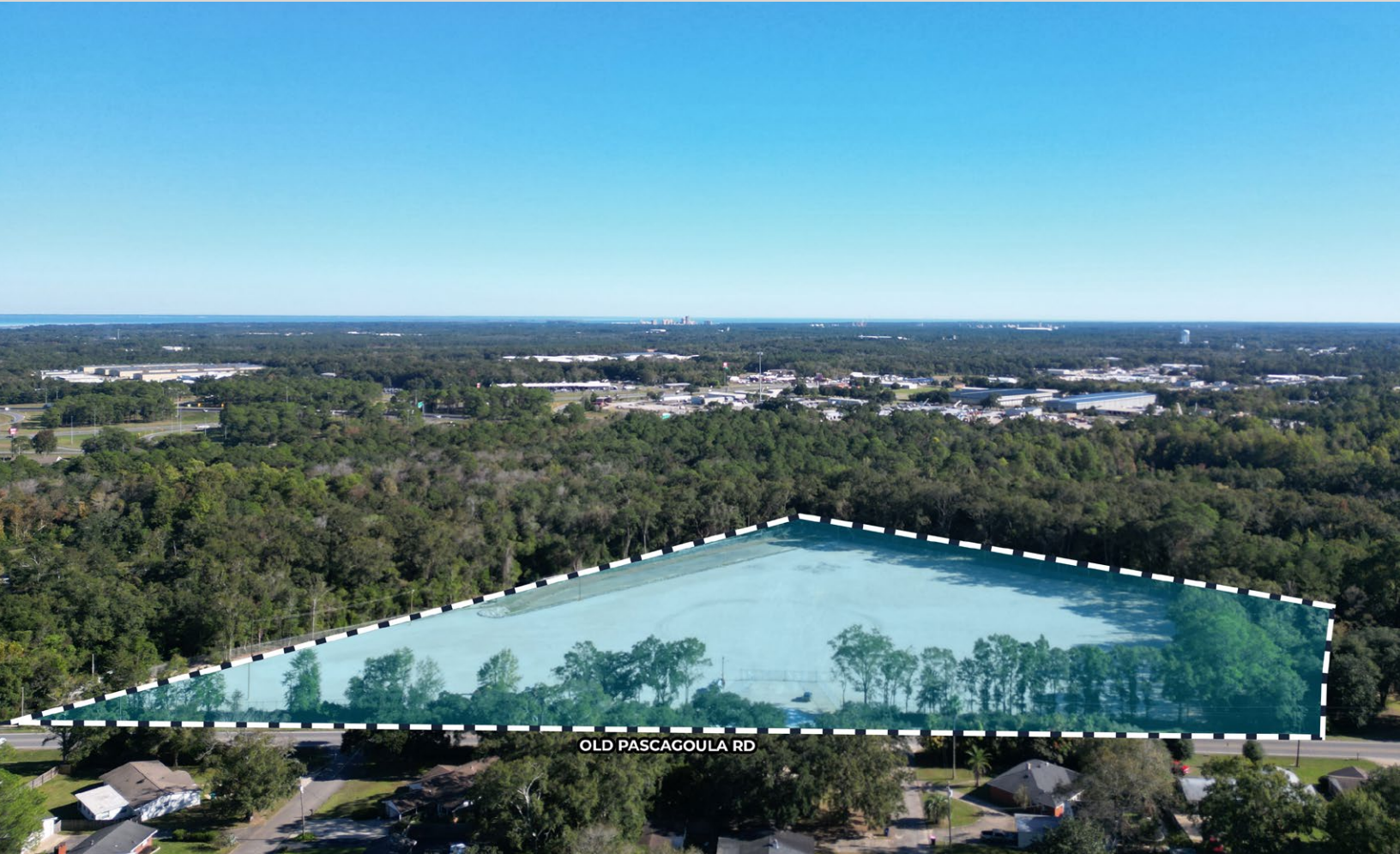


AVAILABLE

9± AC INDUSTRIAL OUTDOOR STORAGE

5943 Old Pascagoula Rd | Tillman's Corner



PROPERTY DESCRIPTION:

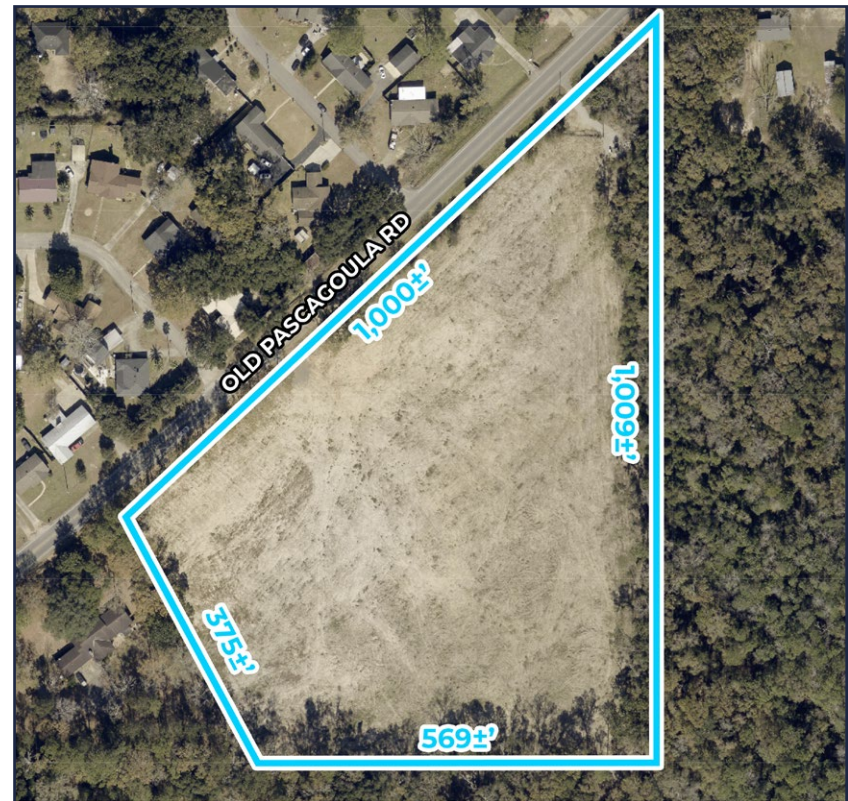
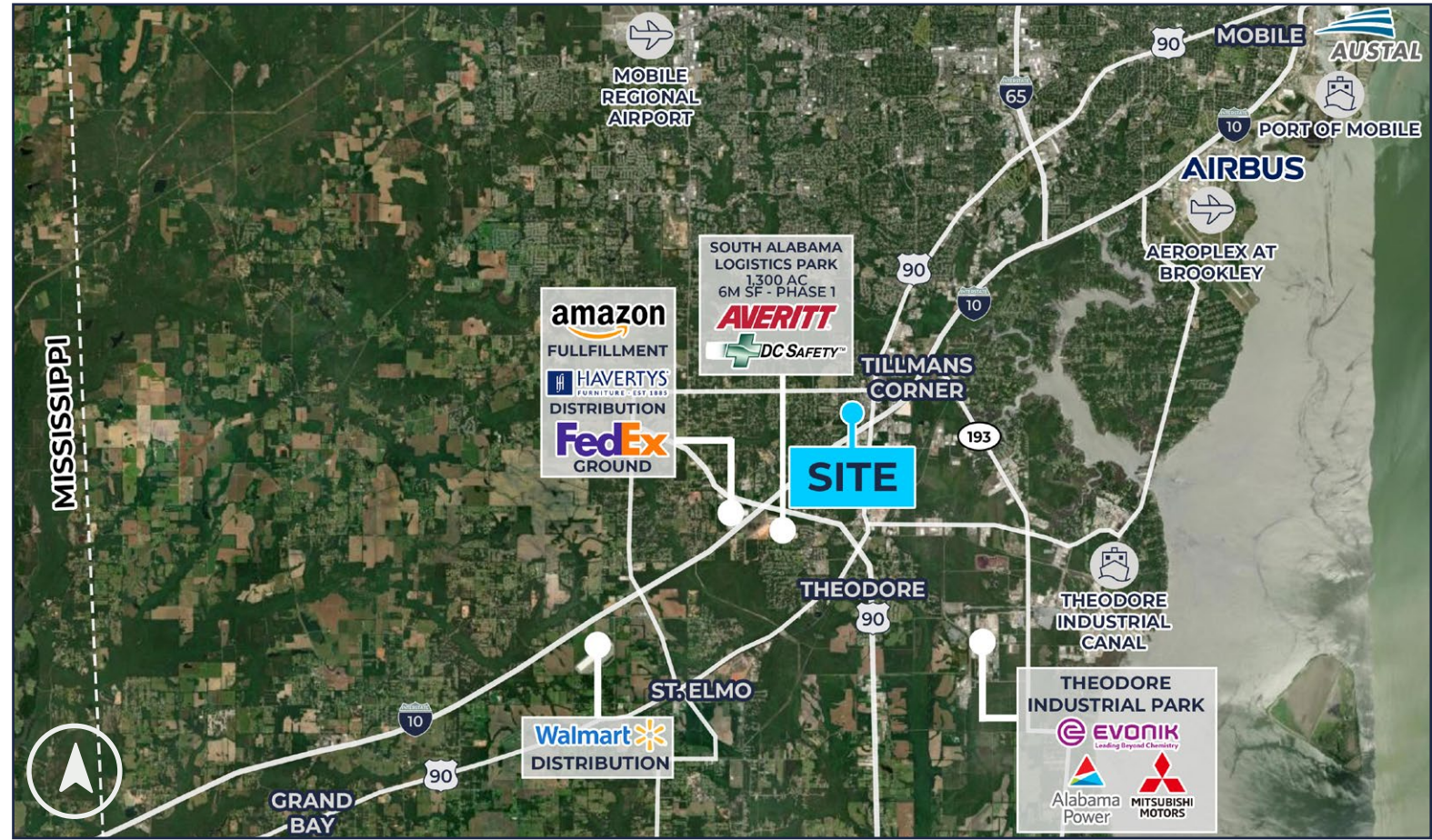
- 9 AC Industrial Outdoor Storage lot available for lease or sale; will subdivide for lease
- Improved aggregate yard with GEOGRID
- Extra wide concrete entry apron for easy access
- Fenced with automatic gate and perimeter lighting
- Convenient location, only 1 mile to I-10
- County: Unzoned

SALE PRICE: \$3,400,000
LEASE RATE: \$3,000/AC/MONTH

Pete Riehm, SIOR
251.442.4349 | priehm@cre-mobile.com



**CRE
MOBILE**
CRE-MOBILE.COM



DISTANCES TO NOTABLE LOCATIONS

| | |
|------------------------|--------------|
| I-10 (Exit 15) | 1.2 miles ± |
| I-10 (Exit 17) | 2.2 miles ± |
| Rangeline Rd | 1.4 miles ± |
| I-65 | 5.5 miles ± |
| Aeroplex at Brookley | 9.2 miles ± |
| Port of Mobile | 13.1 miles ± |
| Mississippi State Line | 16.5 miles ± |

Distance measured as driving

NO WARRANTY OR REPRESENTATION, EXPRESS OR IMPLIED, IS MADE AS TO THE ACCURACY OF THE INFORMATION CONTAINED HEREIN, AND THE SAME IS SUBMITTED SUBJECT TO ERRORS, OMISSIONS, CHANGE OF PRICE, RENTAL OR OTHER CONDITIONS, PRIOR SALE, LEASE OR FINANCING, OR WITHDRAWAL WITHOUT NOTICE, AND OF ANY SPECIAL LISTING CONDITIONS IMPOSED BY OUR PRINCIPALS. NO WARRANTIES OR REPRESENTATIONS ARE MADE AS TO THE CONDITION OF THE PROPERTY NOR ANY HAZARDS CONTAINED THEREIN ARE ANY TO BE IMPLIED.



NO WARRANTY OR REPRESENTATION, EXPRESS OR IMPLIED, IS MADE AS TO THE ACCURACY OF THE INFORMATION CONTAINED HEREIN, AND THE SAME IS SUBMITTED SUBJECT TO ERRORS, OMISSIONS, CHANGE OF PRICE, RENTAL OR OTHER CONDITIONS, PRIOR SALE, LEASE OR FINANCING, OR WITHDRAWAL WITHOUT NOTICE, AND OF ANY SPECIAL LISTING CONDITIONS IMPOSED BY OUR PRINCIPALS. NO WARRANTIES OR REPRESENTATIONS ARE MADE AS TO THE CONDITION OF THE PROPERTY NOR ANY HAZARDS CONTAINED THEREIN ARE ANY TO BE IMPLIED.