

FOR LEASE

3049 RESEARCH DRIVE, RICHMOND, CA 94806



PROPERTY OVERVIEW

SIZE:	±3,885 SF
OFFICE:	Approximately 1,700 SF
POWER:	100 A @ 480 V (Estimated E-Mon D-Mon share of shared 200 A service. Confirm)
LOADING:	1 12' x 14' drive-in door
CLEAR:	±18'
COLUMNS:	±40' x ±24 (typical)
PARKING:	Ample
SPRINKLERS:	Yes
ZONING:	IB, Industrial Business This district is intended to accommodate a diverse range of business and light industrial uses, including office, general service, research and development, biotechnology, small-scale wholesale and warehousing facilities, and service commercial uses. It includes flex space, and industrial buildings for single or multiple users, limited personal services such as health and fitness studios, and other related uses. Small-scale retail and certain institutional uses are also permitted.
LEASE RATE:	\$1.05 PSF NNN per month OpEx estimated at \$.35 PSF per month



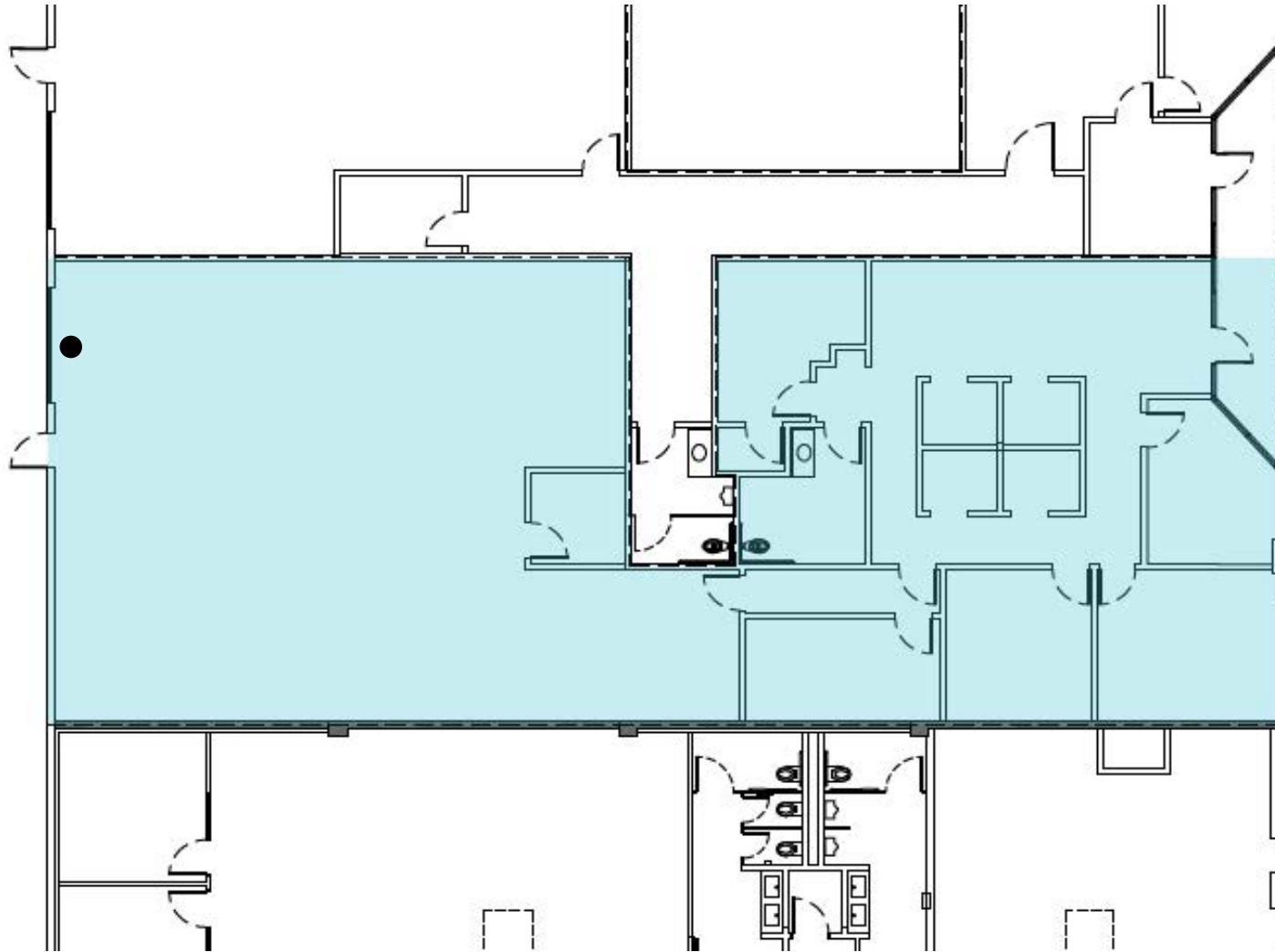
Michael Walker
mwalker@lee-associates.com
M 510.914.0310

FOR LEASE

3049 RESEARCH DRIVE, RICHMOND, CA 94806



FLOOR PLAN



Michael Walker
mwalker@lee-associates.com
M 510.914.0310

FOR LEASE

3049 RESEARCH DRIVE, RICHMOND, CA 94806



NEARBY AMENITIES

Michael Walker
mwalker@lee-associates.com
M 510.914.0310

