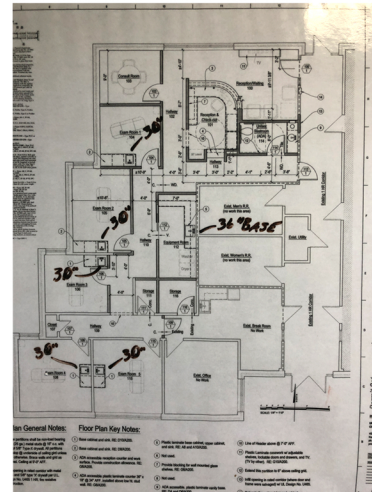


Medical/Dental Office Suite for Rent

Up to 1431 Sf finished healthcare office suite,
11879 W. 112th St. Overland Park, KS 66210

Highlights:

- 1 mile from Overland Park Regional Hospital
- High-end finish, with sink in every treatment room,
- Ground-level entry
- Handicap accessible
- 1 consulting room
- 3 treatment rooms with sinks
- Equipment room with laundry storage or Break room
- Unisex Restroom
- Reception and waiting room
- Built-in desk, reception and checkout
- Street Sign, designated parking
- Roof 2 years old



Triple Net Lease

\$23/SF + CAM (adjustable yearly)
CAM first year estimated
at \$5 /SF. Total approx. \$28/SF

Landlord may consider
flat rate lease

Listing Agent: Homi Moshiri. Broker, Moshiri Realty Company. 913-207-8000. mhomi@aol.com