

# ±400-4,226 SF Office Space FOR LEASE

900 N. Hairston Road  
Stone Mountain, GA 30083



## PROPERTY OVERVIEW

Opportunity to operate your successful business or practice in a beautiful, well-established office building in the Stone Mountain area. Lease as small as ±400 SF to as much as ±4,226 SF. This unique building offers 2nd generation medical space and traditional office space at an affordable price. This impressive building offers monument sign exposure to ±28,000 cars per day as well as plenty of parking.

Conveniently located between N Hairston and Memorial Drive in a high demographic area, there is quick access to the highway as well as shopping and dining options within walking distance.

- Medical or traditional office space availability
- Variety of different size office spaces
- Great visibility in high traffic area
- Great walkability
- Monument signage availability

±400-  
4,226 SF

\$12/SF  
MG

Available Space

Lease Rate

Immediate

28

Availability

Parking Spaces

*Information contained herein may have been provided by the seller, landlord or other outside sources. While deemed reliable, it may be estimated, projected, limited in scope and is subject to change or inaccuracies. Pertinent information should be independently confirmed prior to lease or purchase offer or within an applicable due diligence period.*

CONTACT



**TAMEKA CLARK**  
Commercial Real Estate Advisor  
404-876-1640 x164  
Tameka@BullRealty.com

**BULL REALTY, INC.**  
50 Glenlake Parkway, Suite 600  
Atlanta, GA 30308  
BullRealty.com

# ±400-4,226 SF Office Space FOR LEASE

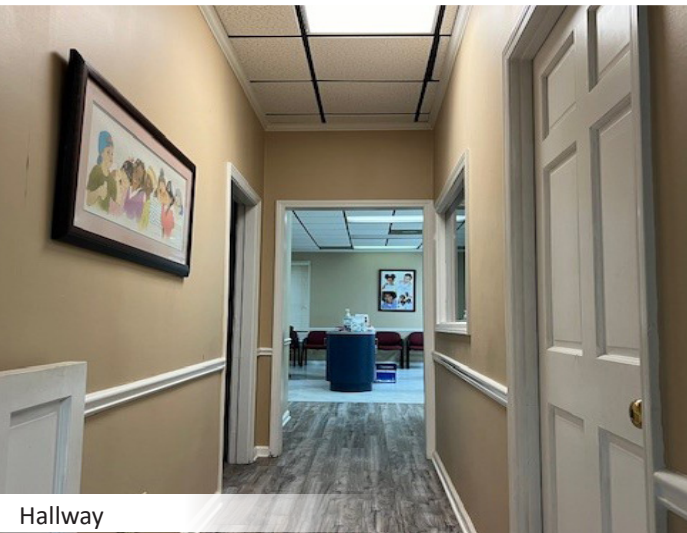
900 N. Hairston Road  
Stone Mountain, GA 30083



Aerial View



Rear of Building



Hallway



Lobby

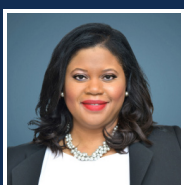


Exam Room



Office Space

CONTACT

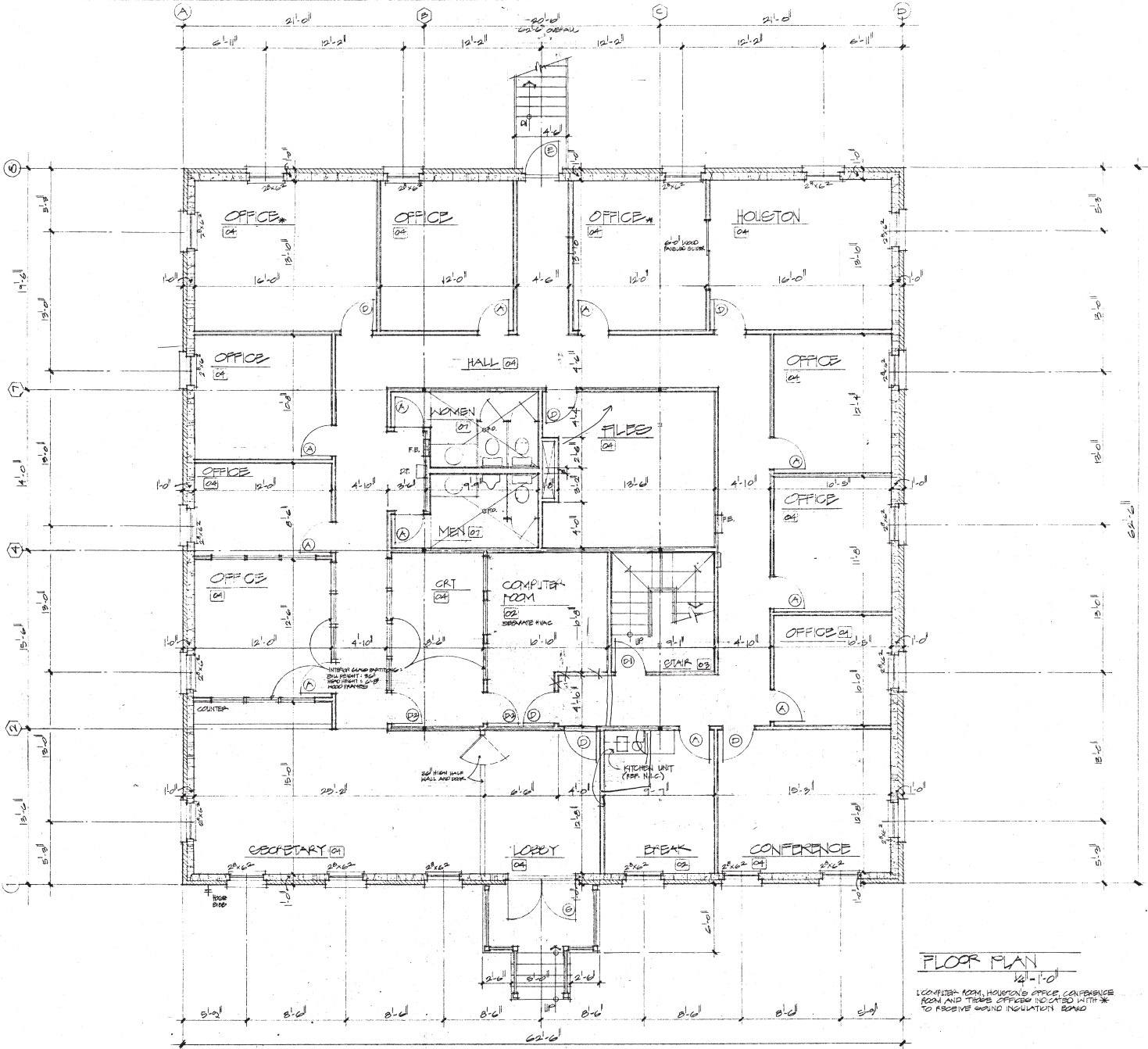


**TAMEKA CLARK**  
Commercial Real Estate Advisor  
404-876-1640 x164  
Tameka@BullRealty.com

**BULL REALTY, INC.**  
50 Glenlake Parkway, Suite 600  
Atlanta, GA 30308  
BullRealty.com

# ±400-4,226 SF Office Space FOR LEASE

900 N. Hairston Road  
Stone Mountain, GA 30083



CONTACT

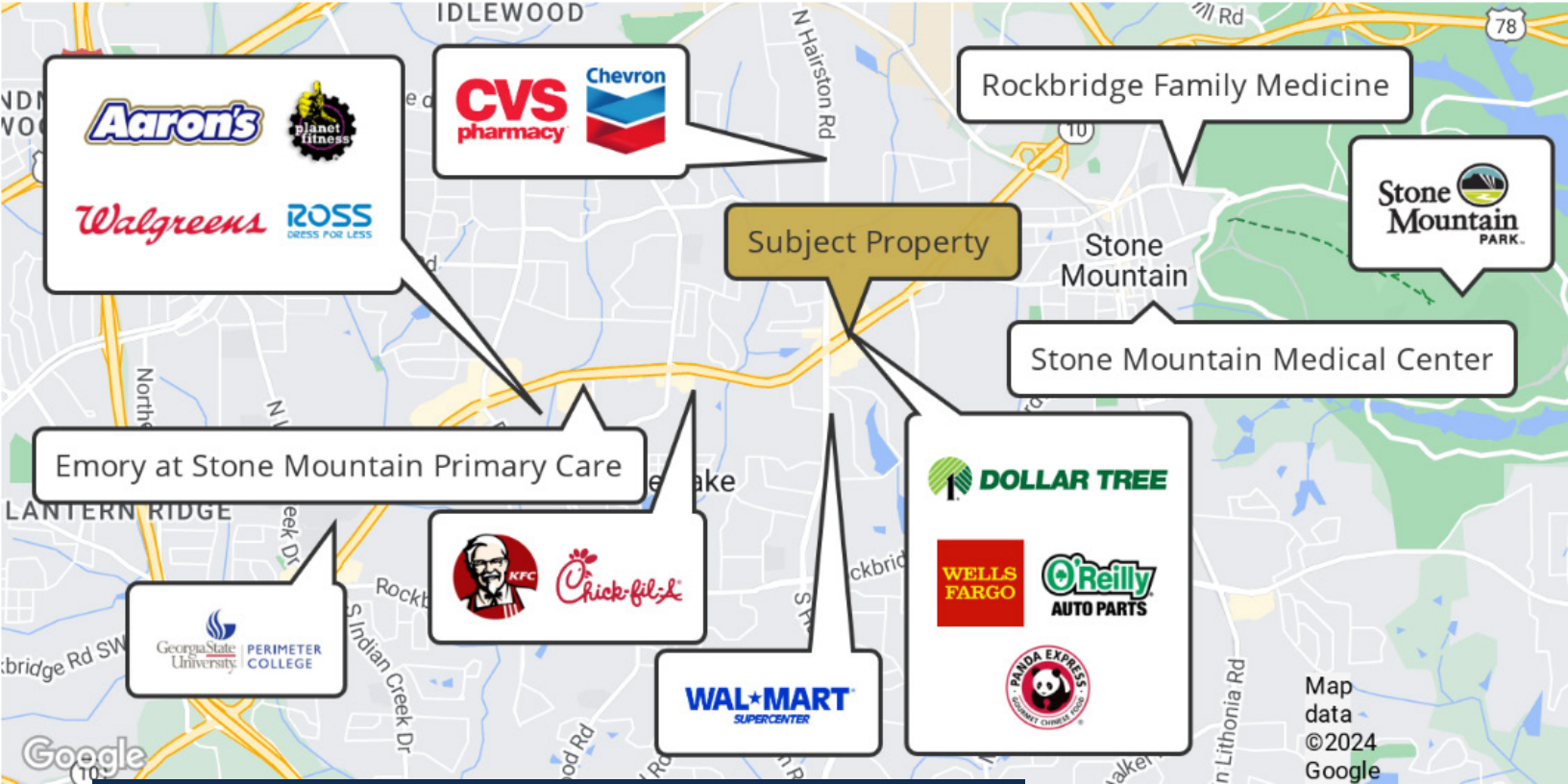


**TAMEKA CLARK**  
Commercial Real Estate Advisor  
404-876-1640 x164  
Tameka@BullRealty.com

**BULL REALTY, INC.**  
50 Glenlake Parkway, Suite 600  
Atlanta, GA 30308  
BullRealty.com

# ±400-4,226 SF Office Space FOR LEASE

900 N. Hairston Road  
Stone Mountain, GA 30083



## DEMOGRAPHICS

|                              | 1-Mile   | 3-Mile   | 5-Mile   |
|------------------------------|----------|----------|----------|
| <b>Population</b>            | 16,026   | 95,996   | 225,125  |
| <b>Households</b>            | 6,153    | 33,865   | 84,905   |
| <b>Avg. Household Income</b> | \$62,582 | \$79,871 | \$95,143 |

Source: 2024 ESRI

Information contained herein may have been provided by the seller, landlord or other outside sources. While deemed reliable, it may be estimated, projected, limited in scope and is subject to change or inaccuracies. Pertinent information should be independently confirmed prior to lease or purchase offer or within an applicable due diligence period.

CONTACT



**TAMEKA CLARK**  
Commercial Real Estate Advisor  
404-876-1640 x164  
Tameka@BullRealty.com

**BULL REALTY, INC.**  
50 Glenlake Parkway, Suite 600  
Atlanta, GA 30308  
BullRealty.com