

# 1318 SOUTHERN BLVD BRONX, NEW YORK



SPACE  
827 RSF  
**LEASED**

**SPACE B:**  
1,400 RSF  
\$4,500/MONTH MG

**SPACE C:**  
504 RSF  
\$1,500/MONTH MG

**A 59 UNIT  
BUILDING**

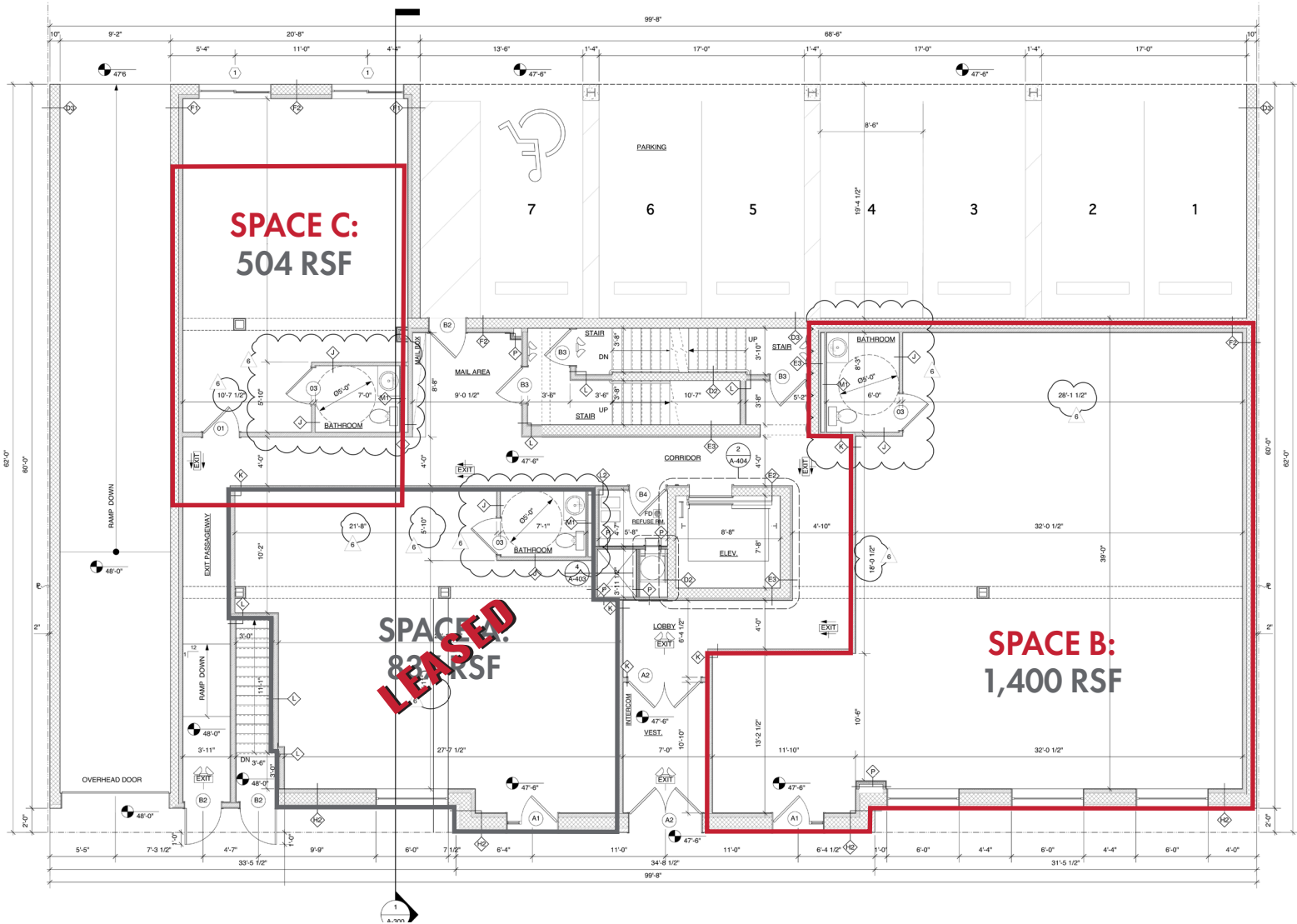
**1/2 BLOCK TO #2 & #5 SUBWAY STATION (FREEMAN ST)**

**CONTACT EXCLUSIVE AGENT:**  
**STEPHEN KAUFMAN**  
914.968.8500 x315  
skaufman@rmfriedland.com

**RM FRIEDLAND**  
COMMERCIAL REAL ESTATE SERVICES  
440 Mamaroneck Ave • Harrison, NY 10528 • rmfriedland.com

All information contained herein is based upon information which we consider reliable, but because it has been supplied by third parties, we cannot represent that it is accurate or complete, and it should not be relied upon as such. The offerings are subject to errors, omissions, changes, including price, or withdrawal without notice. The content is provided without warranties of any kind, either express or implied. RM Friedland, LLC, its agents or employees shall not be held liable to anyone for any errors, omissions or inaccuracies under any circumstances. You and your advisors should conduct a careful, independent examination of the property to determine to your satisfaction the suitability of the property for your needs.

# 1318 SOUTHERN BLVD BRONX, NEW YORK



**CONTACT EXCLUSIVE AGENT:**  
**STEPHEN KAUFMAN**  
 914.968.8500 x315  
 skaufman@rmfriedland.com

**RM FRIEDLAND**  
 COMMERCIAL REAL ESTATE SERVICES  
 440 Mamaroneck Ave • Harrison, NY 10528 • rmfriedland.com

All information contained herein is based upon information which we consider reliable, but because it has been supplied by third parties, we cannot represent that it is accurate or complete, and it should not be relied upon as such. The offerings are subject to errors, omissions, changes, including price, or withdrawal without notice. The content is provided without warranties of any kind, either express or implied. RM Friedland, LLC, its agents or employees shall not be held liable to anyone for any errors, omissions or inaccuracies under any circumstances. You and your advisors should conduct a careful, independent examination of the property to determine to your satisfaction the suitability of the property for your needs.