

# THE GRACE BUILDING

---

166 Geary Street  
UNION SQUARE | SAN FRANCISCO



PRIME BESPOKE OFFICE SPACES IN ICONIC  
AND NEWLY RENOVATED HISTORIC BUILDING,  
JUST STEPS FROM UNION SQUARE AND  
SURROUNDED BY NUMEROUS WORLD-CLASS  
BOUTIQUES AND EATERIES







## PROPERTY HIGHLIGHTS:

Prime bespoke office spaces in iconic and newly renovated historic building, Just steps from union square and surrounded by numerous world-class boutiques and eateries.

Full floor opportunities of 2,540 Square Feet available, including the top 3 Floors.

Largely open floor plans, Ideal for creative office and virtually all office uses, including medical and beauty.

Building facade lobby and interiors have been extensively and meticulously renovated.

Tremendous natural light and spectacular unobstructed views in all directions from most floors.

In close proximity to public transportation lines via Powell Street BART & Muni and Cable Car, and abundant parking in close proximity.

Exceptionally safe with onsite manager and state-of-the-art security system.

## SUITES AVAILABLE

Full Floor Opportunities of 2,540 Square Feet Available on Top Three Floors 14-16 and on Floors 3, 5 & 7.

Suite 402: 226 SF

Suite 605: 226 SF

Suite 606: 546 SF

Suite 908: 642 SF

Suite 1000: 1,039 SF

Suite 1005: 472 SF

## FOR LEASING INQUIRIES, PLEASE CONTACT:

**YOAV SARRAF**

MANAGING PARTNER

T: 424.284.4460

E: [ysarraff@concord-re.com](mailto:ysarraff@concord-re.com)

BRE # 01856362

**BEITA COHEN**

INVESTMENT ASSOCIATE

T: 424.284.4454

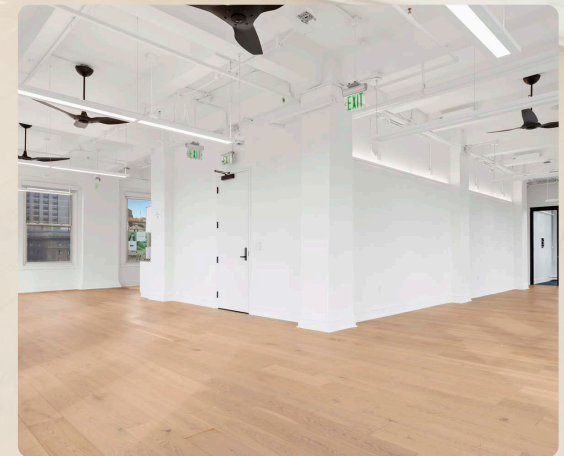
E: [bcohen@concord-re.com](mailto:bcohen@concord-re.com)

BRE # 02143806



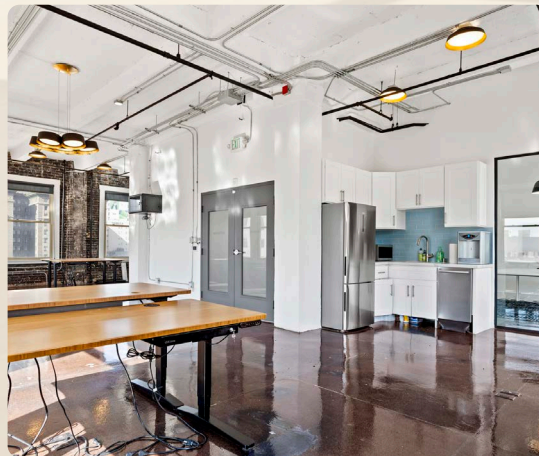


THE  
GRACE  
BUILDING



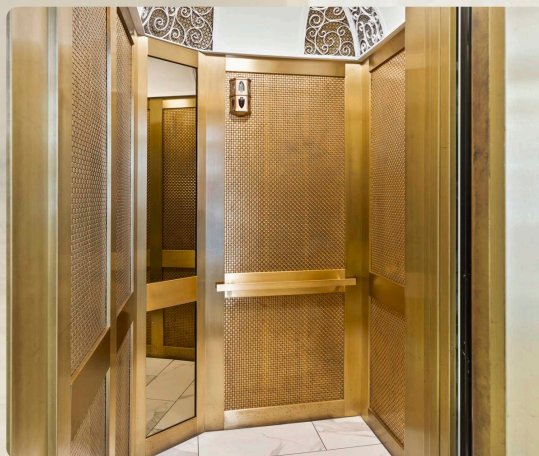


THE  
GRACE  
BUILDING





THE  
GRACE  
BUILDING





THE  
GRACE  
BUILDING

Top Three Floors Available







# UNION SQUARE MAJOR RETAILERS



*Saks Fifth Avenue*



GUCCI

*Neiman Marcus*

TIFFANY & CO.



TORY BURCH

BVLGARI

LOUIS VUITTON



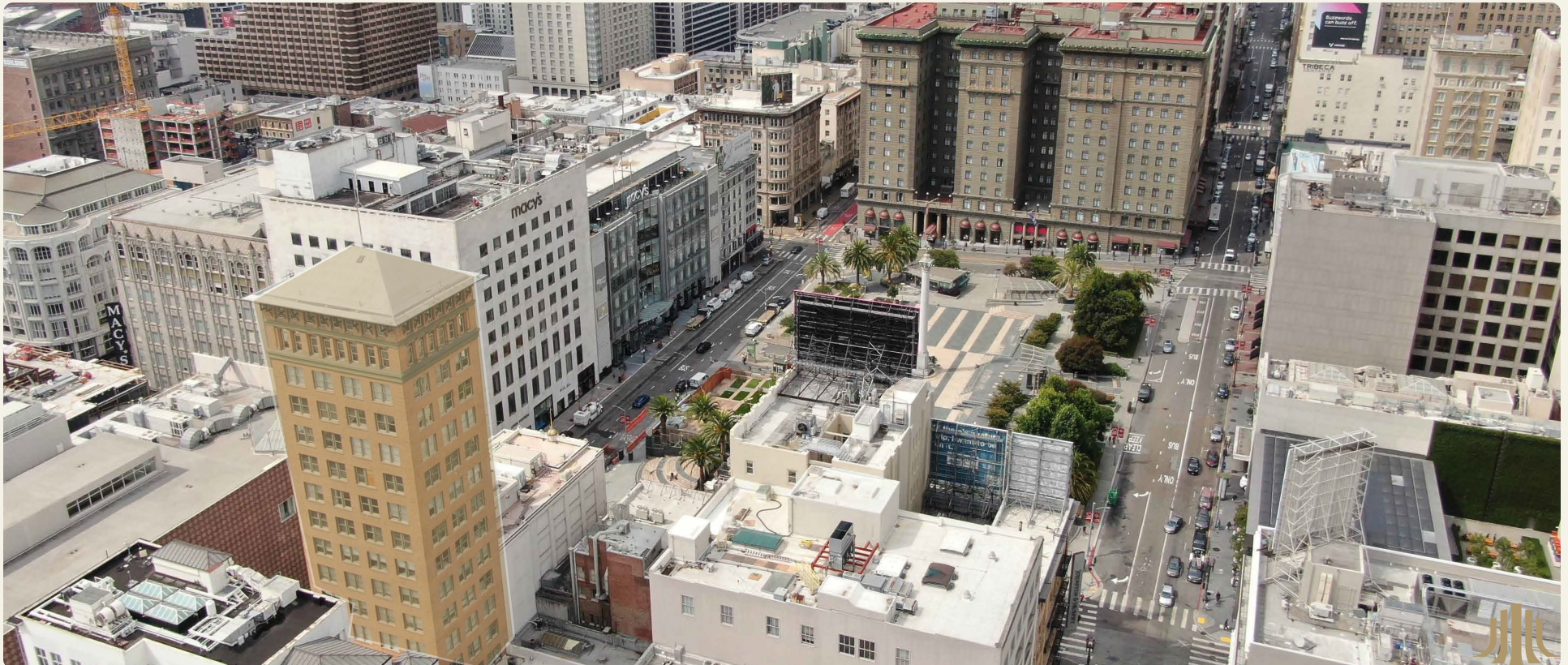
BURBERRY  
LONDON ENGLAND

JIMMY CHOO

PRADA

GOYARD  
MALLÉTIER DEPUIS 1853  
PARIS

SUITSUPPLY







**YOAV SARRAF**

**MANAGING PARTNER**

**T: 424.284.4460**

**E: ysarraf@concord-re.com**

**BRE # 01856362**

**BEITA COHEN**

**INVESTMENT ASSOCIATE**

**T: 424.284.4454**

**E: bcohen@concord-re.com**

**BRE # 02143806**