

# Retail Space For Lease

101-113 E. 8<sup>th</sup> Street & 748 S. Main Street  
Los Angeles, CA



Suite 111 - Storefront



Suite 109 - Restaurant

Suite	RSF	Rate/SF	Description
107	1,650	\$2.00 MG	Street level storefront with hardwood floors and private restroom
109	2,450	\$2.00 MG	Gorgeous restaurant ready w/ tile floors, restroom, sinks, grease trap and hood. Includes 850 SF basement.
111	1,600	\$2.50 MG	Street level storefront with natural light and high ceilings
113	2,800	\$1.50 MG	Street level storefront with hardwood floors, private restroom and high ceilings. Corner Space on east alley. Includes 1,200 SF basement.
748	8,700	\$1.50 MG	Street level storefront with high ceilings and mezzanine space,
BSMT	7,000	\$1.00 MG	Below grade space, with access off 8th St & Werdin Alley

The 8th and Main Street's brightly lit retail units are on the ground floor of a mixed-use property wedged between some of the most historic and dynamic neighborhoods of Downtown Los Angeles anchored by the Fashion, the Flower and the Jewelry Districts. It is home to some of the most trafficked, visited, and revered sites in all of Los Angeles with Santee Alley, the world-famous Apple Store at Tower Theater, the Ace Hotel and The Orpheum Theater all within a block or two. Foodie institutions such as Rossoblu, Sonoratown (tacos), and Polanquito add to the neighborhoods standing as the place to be, shop, and eat in LA.

## Get more information

Andrew Berk  
Principal  
626.676.4230  
CalDRE #01369568  
[andrew.berk@avisonyoung.com](mailto:andrew.berk@avisonyoung.com)

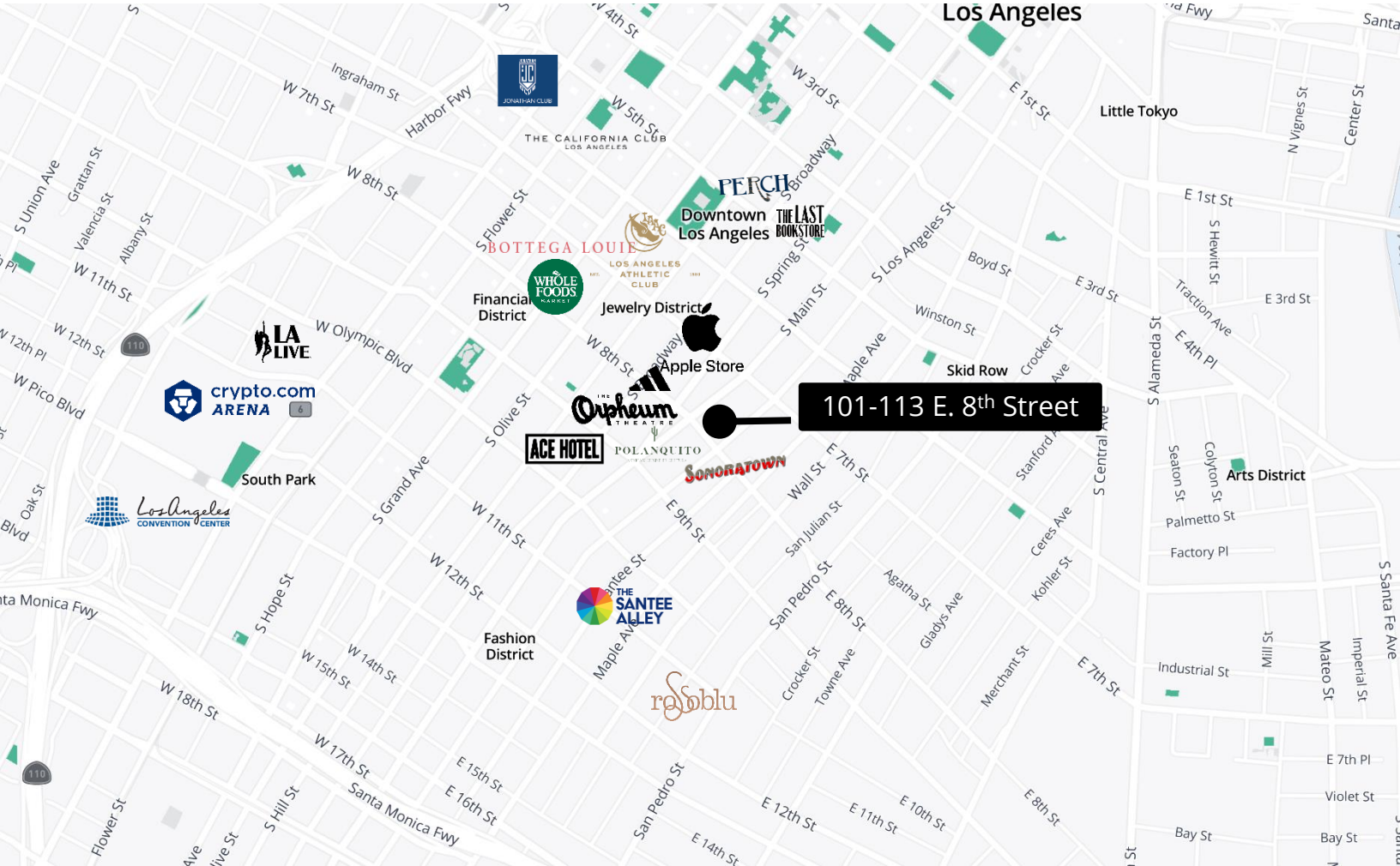
Dan Wakumoto  
Principal  
213.471.1056  
CalDRE #01315900  
[dan.wakumoto@avisonyoung.com](mailto:dan.wakumoto@avisonyoung.com)



Wild Living Food Restaurant on corner

# Retail Space for Lease

101-113 E. 8th Street & 748 S. Main Street  
Los Angeles, CA



DEMOGRAPHICS	1-Mile	3-Mile	5-Mile
2023 Population	64,326	514,539	1,229,679
2023 Households	34,760	169,633	385,674
Average Household Size	1.6	2.8	3
Average Household Income	\$95,392	\$68,556	\$73,826
Daytime Employment	159,955	342,204	576,835

TRAFFIC COUNTS	MSPI Estimate
S Main Street at 8 <sup>th</sup> Street	13,315
E 8 <sup>th</sup> Street @ Los Angeles Street	9,584

**AVISON YOUNG**  
 Andrew Berk  
 Principal  
 C 626.676.4230  
 CalDRE #01369568  
[andrew.berk@avisonyoung.com](mailto:andrew.berk@avisonyoung.com)

Dan Wakumoto  
 Principal  
 213.471.1056  
 CalDRE #01315900  
[dan.wakumoto@avisonyoung.com](mailto:dan.wakumoto@avisonyoung.com)

© 2023 Avison Young – Southern California, Ltd. Information contained herein was obtained from sources deemed reliable and, while thought to be correct, have not been verified. Avison Young does not guarantee the accuracy or completeness of the information presented, nor assumes any responsibility or liability for any errors or omissions therein.

# Retail Space for Lease

101-113 E. 8th Street & 748 S. Main Street  
Los Angeles, CA



**AVISON  
YOUNG**

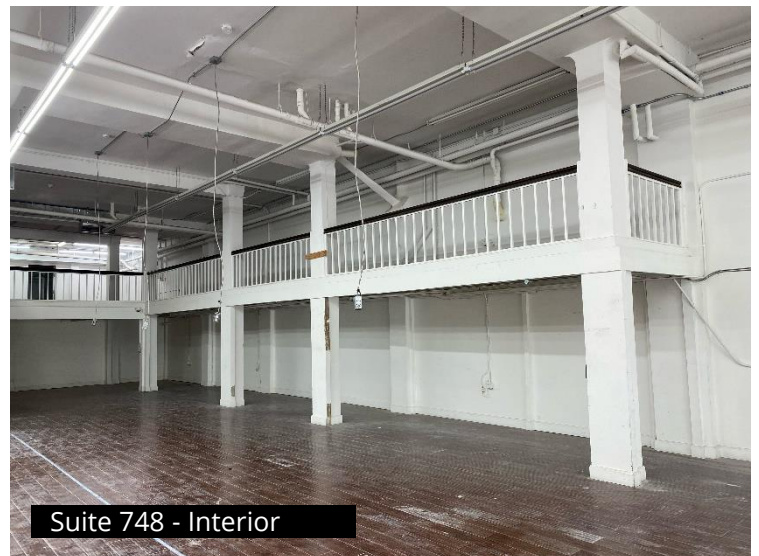
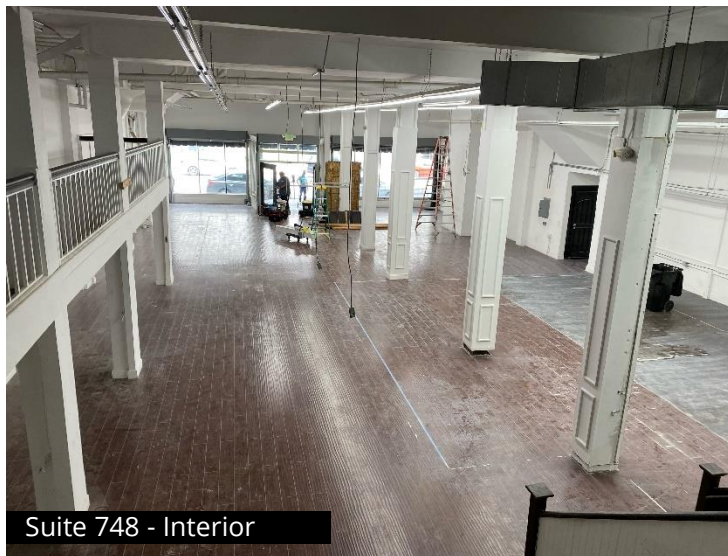
Andrew Berk  
Principal  
C 626.676.4230  
CalDRE #01369568  
[andrew.berk@avisonyoung.com](mailto:andrew.berk@avisonyoung.com)

Dan Wakumoto  
Principal  
213.471.1056  
CalDRE #01315900  
[dan.wakumoto@avisonyoung.com](mailto:dan.wakumoto@avisonyoung.com)



# Retail Space for Lease

101-113 E. 8th Street & 748 S. Main Street  
Los Angeles, CA



**AVISON  
YOUNG**

Andrew Berk  
Principal  
C 626.676.4230  
CalDRE #01369568  
[andrew.berk@avisonyoung.com](mailto:andrew.berk@avisonyoung.com)

Dan Wakumoto  
Principal  
213.471.1056  
CalDRE #01315900  
[dan.wakumoto@avisonyoung.com](mailto:dan.wakumoto@avisonyoung.com)