



Colliers

# GIS PLAZA OFFICE CONDO

*Rare downtown Bellevue  
small owner/user office  
opportunity for sale in  
modern mixed-use project*

999 110TH AVE NE, UNIT 200  
BELLEVUE, WA 98004

EXCLUSIVELY LISTED BY

**MONICA WALLACE**

Kidder Mathews

425.753.4121

monica.wallace@kidder.com

**JEFF CHANEY**

Colliers

206.260.8900

jeff.chaney@colliers.com







# A RARE DOWNTOWN OFFICE EXPERIENCE

*Ideally situated close to freeways, transit, parks, cafes, as well as world-class retail & restaurants at Bellevue Square & The Shops at Bravern*

ADDRESS	999 110th Ave NE, Unit 200 Bellevue, WA 98004
AVAILABLE SF	±1,794 SF  TAKE VIRTUAL TOUR
ASKING PRICE	\$1,350,000
YEAR BUILT	2023
PARKING	2 stalls
ZONING	DNTN-R
UNIT NO. C200	Corner suite on 2 <sup>nd</sup> level with floor-to-ceiling window line
CONDITION	Space is in shell condition and ready for buyer's construction. Common restrooms adjacent to unit.
AMENITY ACCESS	Access to beautiful rooftop deck  ROOFTOP DECK VIRTUAL TOUR

The property is currently under court-appointed receivership. Any offer will require a sale motion and court approval.

**±1,794 SF**  
AVAILABLE

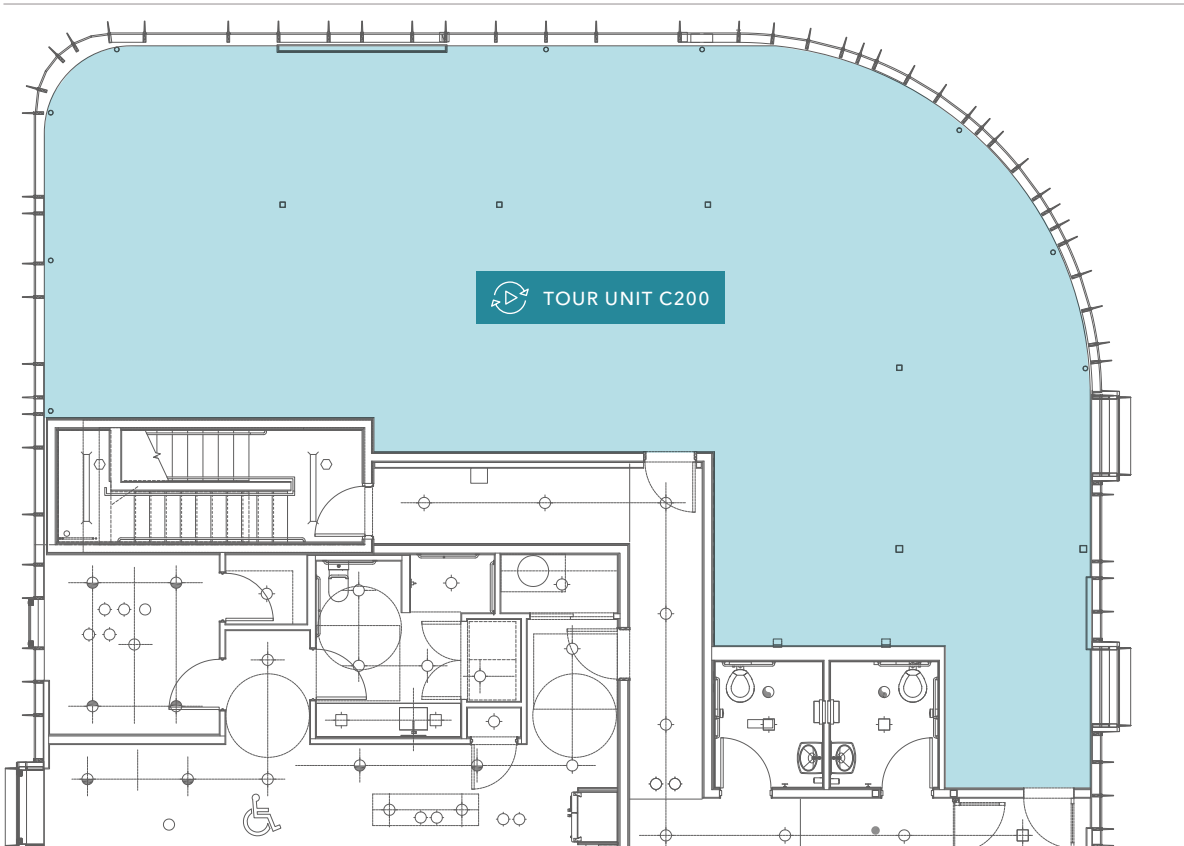
**\$1.35M**  
ASKING PRICE

# SECOND FLOOR PLAN

NE 10TH ST



110TH AVE NE



*±1,794 SF*

AVAILABLE

*\$1.35M*

ASKING PRICE

*NOW*

AVAILABLE



Not to scale and configuration must be verified by Tenant.



# GIS PLAZA OFFICE CONDO


LINCOLN SQUARE

BELLEVUE LIBRARY


THE SHOPS AT THE BRAVERN

WHOLE FOODS MARKET

GIS PLAZA

Chick-fil-A

QFC

INTERSTATE 405

DOWNTOWN BELLEVUE STATION  
.5 miles away | 3 blocks away

THE NORTH FACE

★ macy's

NORDSTROM

TIFFANY & CO.

Eddie Bauer

BELLEVUE SQUARE

TESLA

xfinity

SEPHORA

Apple

Tommy Bahama

AMERICAN EAGLE OUTFITTERS

VICTORIA'S SECRET

Crate&Barrel

T-Mobile

SOULCYCLE

MART

BELLEVUE DOWNTOWN PARK


Just Bites

GRAND CONNECTION  
Pedestrian Path


AVAILABLE FOR SALE

KIDDER MATHEWS



# GIS PLAZA OFFICE CONDO





# GIS PLAZA OFFICE CONDO

*Exclusively listed by*

**MONICA WALLACE**

Kidder Mathews

425.753.4121

monica.wallace@kidder.com

**JEFF CHANEY**

Colliers

206.260.8900

jeff.chaney@colliers.com

**KIDDER.COM**

**COLLIERS.COM**

This information supplied herein is from sources we deem reliable. It is provided without any representation, warranty, or guarantee, expressed or implied as to its accuracy. Prospective Buyer or Tenant should conduct an independent investigation and verification of all matters deemed to be material, including, but not limited to, statements of income and expenses. Consult your attorney, accountant, or other professional advisor. All Kidder Mathews designs are the sole property of Kidder Mathews. Branded materials and layouts are not authorized for use by any other firm or person.

