

# FLEMING ISLAND BUSINESS PARK

1845 TOWN CENTER BLVD - BUILDING 200, FLEMING ISLAND, FL 32003



## PROPERTY OVERVIEW

Nicely appointed property that can accommodate both office users and flex users. The building offers ample parking with easy access.

## LOCATION OVERVIEW

Located in the heart of Fleming Island. The building is near the heavily trafficked intersection of US 17 and CR 220 conveniently located near retail/amenities. Located near retail shops such as Wal-Mart, Target, Publix, CVS, Starbucks, Home Depot, Michaels, Pet Smart, etc. The property is a reverse commute for Jacksonville residents.

SPACES	LEASE RATE	SPACE SIZE
Suite 100	\$14.00 SF/yr	2,556 SF
Suite 1-110-F	Negotiable	320 SF
Suite 2-208	\$14.00 SF/yr	1,500 - 3,408 SF
Suite 2-290	\$14.00 SF/yr	3,286 SF

**JOANN LYLE**    **VASHA CARTER**  
 904.377.0890    202.905.8578  
 jlyle@svrcom.com    vcarter@svrcom.com

**SVR**  
 Commercial

# FLEMING ISLAND BUSINESS PARK

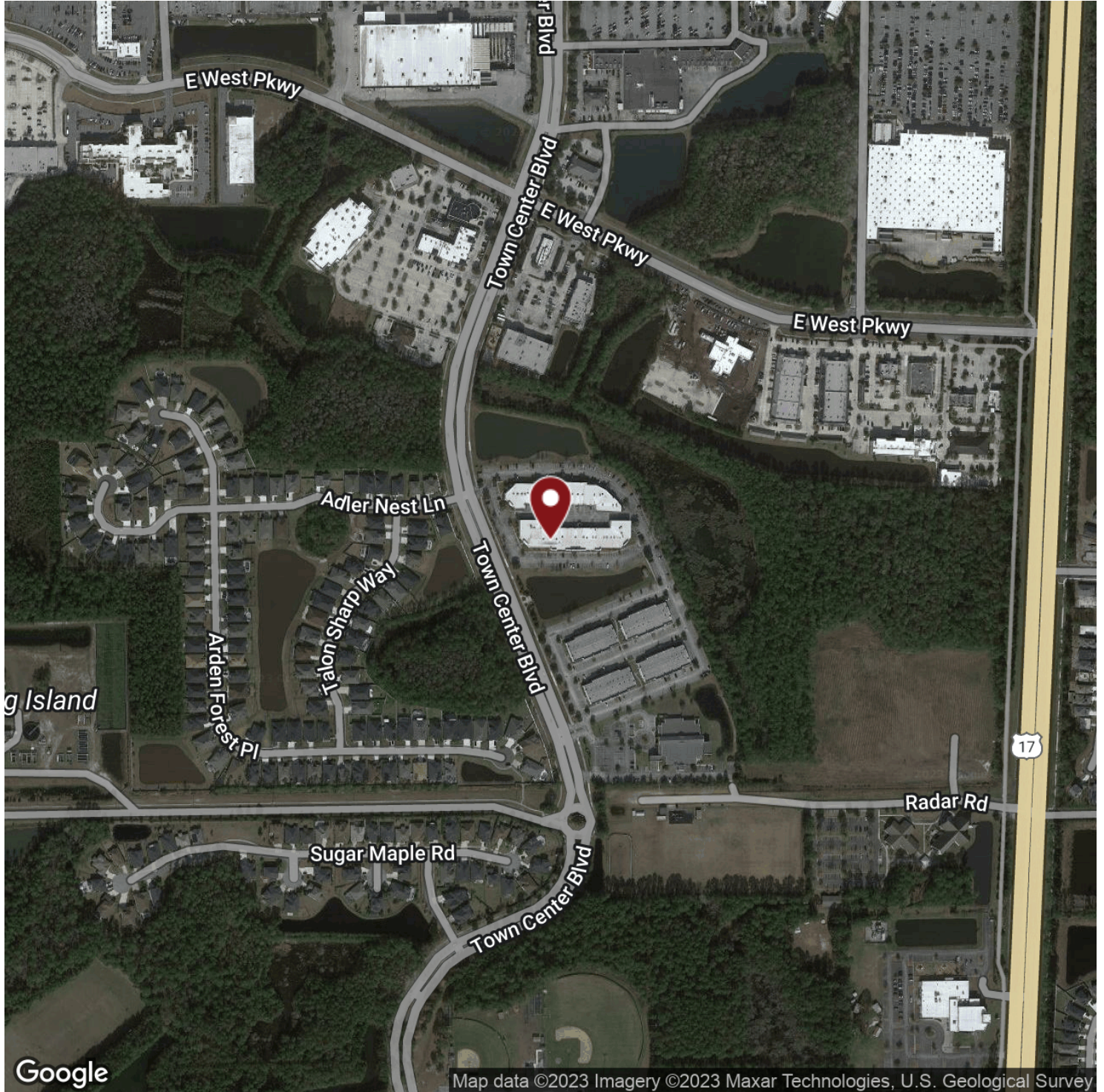
1845 TOWN CENTER BLVD - BUILDING 200, FLEMING ISLAND, FL 32003



**JOANN LYLE**    **VASHA CARTER**  
904.377.0890    202.905.8578  
jlyle@svrcom.com    vcarter@svrcom.com

# FLEMING ISLAND BUSINESS PARK

1845 TOWN CENTER BLVD - BUILDING 200, FLEMING ISLAND, FL 32003



**JOANN LYLE**    **VASHA CARTER**  
904.377.0890    202.905.8578  
jlyle@svrcom.com    vcarter@svrcom.com

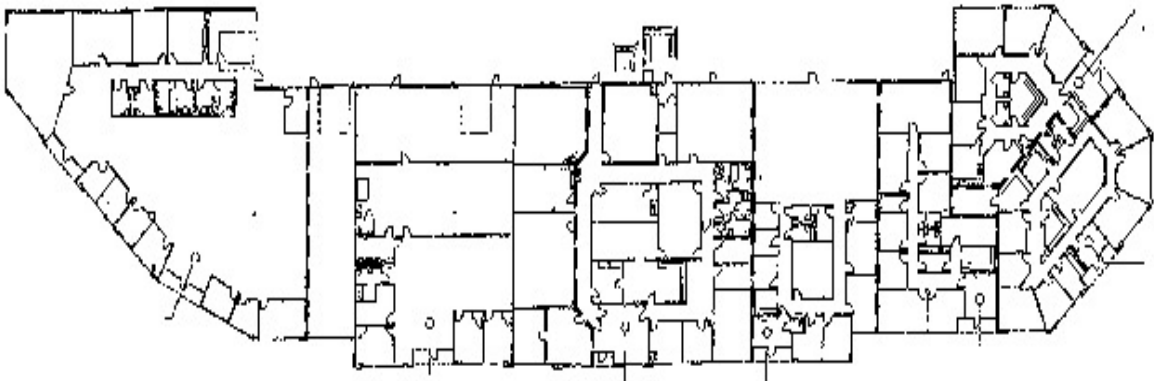
SVR Commercial, LLC • 100 Fairway Park Blvd Unit 2200 • PVB, FL 32082 • 904.454.3856



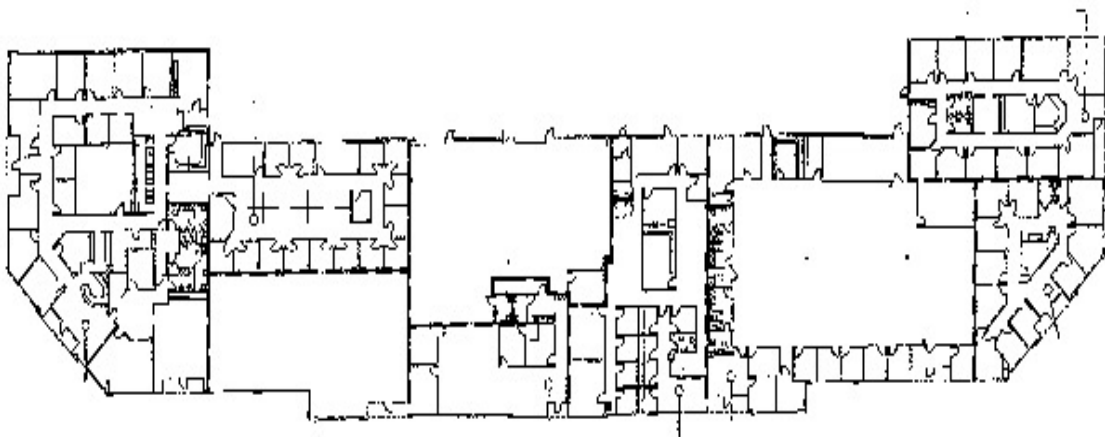
svrcommercial.com

# FLEMING ISLAND BUSINESS PARK

1845 TOWN CENTER BLVD - BUILDING 200, FLEMING ISLAND, FL 32003



BUILDING 100  
FLEMING ISLAND BUSINESS PARK



BUILDING 200  
FLEMING ISLAND BUSINESS PARK

---

**JOANN LYLE**    **VASHA CARTER**

904.377.0890    202.905.8578

jlyle@svrcom.com    vcarte@svrcom.com

# FLEMING ISLAND BUSINESS PARK

1845 TOWN CENTER BLVD - BUILDING 200, FLEMING ISLAND, FL 32003



JOANN LYLE VASHA CARTER

904.377.0890 202.905.8578

jlyle@svrcom.com vcarter@svrcom.com