



## FOR LEASE

### 818 SF Office Space in McCully - Moiliili Area

1950 Young Street  
Honolulu, HI 96826

#### HIGHLIGHTS & BENEFITS

- Central location with strong visibility and branding opportunity.
- Elevator-served, flexible floor plans, and natural lighting.
- Excellent value compared to nearby Class A office properties.
- Surrounded by mixed-use developments and residential density.

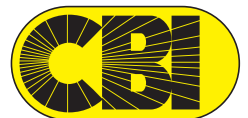
#### INVESTMENT SUMMARY

TMK:	1-2-8-2-43
Zoning:	BMX-3
Area:	McCully - Mo'ili'ili
Available Spaces:	Ste 360 - 818 SF
Lease Term:	3 - 5 years
Gross Rent:	\$2.85 /SF per month



**Daniel Jarrett III (S)**  
RS-63586  
808-256-3506  
dj@cbi-hawaii.com

**NAI CBI Hawaii**  
1712 S. King Street Suite 201  
Honolulu, HI 96826  
808.942.7100 | www.cbi-hawaii.com



# 1950 Young Street

## PROPERTY OVERVIEW

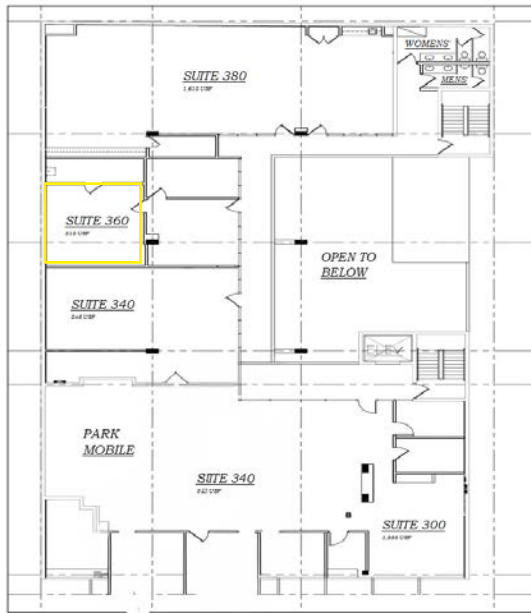
Building Type:	4-story Class B office building
Year Built:	1977
Available Spaces:	818 SF (Suite 360)
Parking:	53 on-site parking stalls
Signage:	Prominent Young Street frontage and potential for exterior signage
Zoning:	BMX-3 (Community Business Mixed Use District)
Elevator Served:	Yes

## LOCATION HIGHLIGHTS

- Prime Central Honolulu Location - Situated in the McCully-Moiliili district, minutes from Ala Moana, Waikiki, and UH Manoa.
- Easy Freeway Access - Convenient entry to H-1 Freeway via Lunalilo Street on-ramps.
- High Walkability - Walk Score 98 and Bike Score 96 ("Walker's Paradise").
- Public Transit Nearby - Multiple TheBus routes along King, Beretania, and Keeaumoku Streets.
- Surrounded by Amenities - Steps from restaurants, retail, banking, and services catering to office users and local residents.

## BUILDING & TENANT MIX

- Mix of professional offices, creative studios, and specialty businesses.
- Existing tenants include Hawaiian Hardball (training facility) and Treehouse Photo Lab.
- Ideal for small businesses, professional services, and boutique medical or wellness uses.



**Daniel Jarrett III (S)**  
RS-63586  
808-256-3506  
dj@cbi-hawaii.com

**NAI CBI Hawaii**  
1712 S. King Street Suite 201  
Honolulu, HI 96826  
808.942.7100 | www.cbi-hawaii.com



Ste 360



**Daniel Jarrett III (S)**  
RS-63586  
808-256-3506  
dj@cbi-hawaii.com

**NAI CBI Hawaii**  
1712 S. King Street Suite 201  
Honolulu, HI 96826  
808.942.7100 | www.cbi-hawaii.com





**Daniel Jarrett III (S)**  
RS-63586  
808-256-3506  
dj@cbi-hawaii.com

**NAI CBI Hawaii**  
1712 S. King Street Suite 201  
Honolulu, HI 96826  
808.942.7100 | www.cbi-hawaii.com

