



OFFICE OPPORTUNITIES

416 WEST 13TH STREET

MEATPACKING DISTRICT
NEW YORK CITY



AVISON
YOUNG



Suite 207



Suite 203



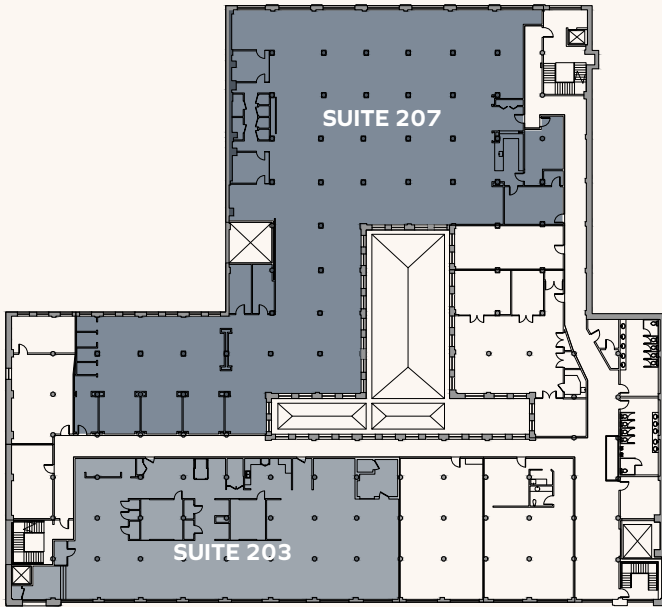
416 WEST 13TH STREET



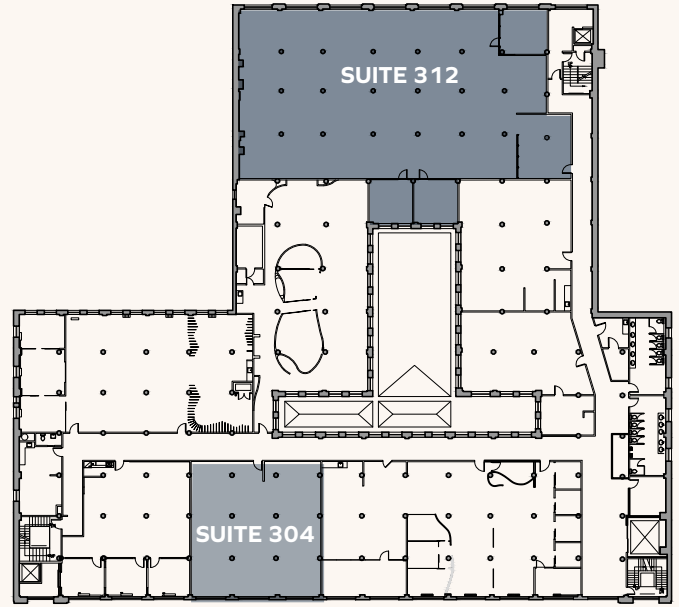
416 West 13th Street is a distinguished, neoclassical commercial building situated between Ninth Avenue and Washington Street, boasting 144,000 sf of sun-drenched office and retail spaces in the heart of the iconic Meatpacking District. Once home to the renowned publishing house P.F. Collier & Son, the landmarked property underwent a massive renovation in 2012 to

convert it into a striking boutique office building with ground floor retail that opens onto the picturesque cobblestone streets on both the north and south sides. The modernized lobby, windows and façade preserve the building's architectural charm and industrial allure, with added amenities to include a tenant-only conferencing center and lounge space.

Second Floor



Third Floor



Current Availabilities

Suite 203*	8,506 RSF
Suite 207*	18,685 RSF
Suite 304	3,144 RSF
Suite 309	4,546 RSF LEASED
Suite 312	10,158 RSF

* Suites can be demised

Possession

Immediate

Term

Negotiable

Ceiling Heights

11'6" - 15' (Slab-to-slab)

Rates

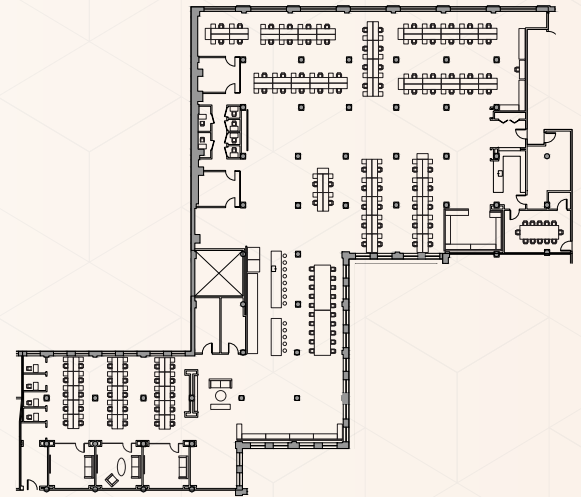
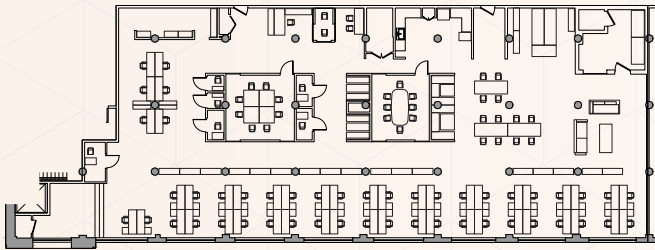
Upon request



Suite 207



Suite 203



SUITE 203 / 8,506 RSF

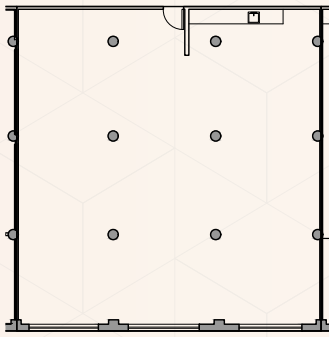
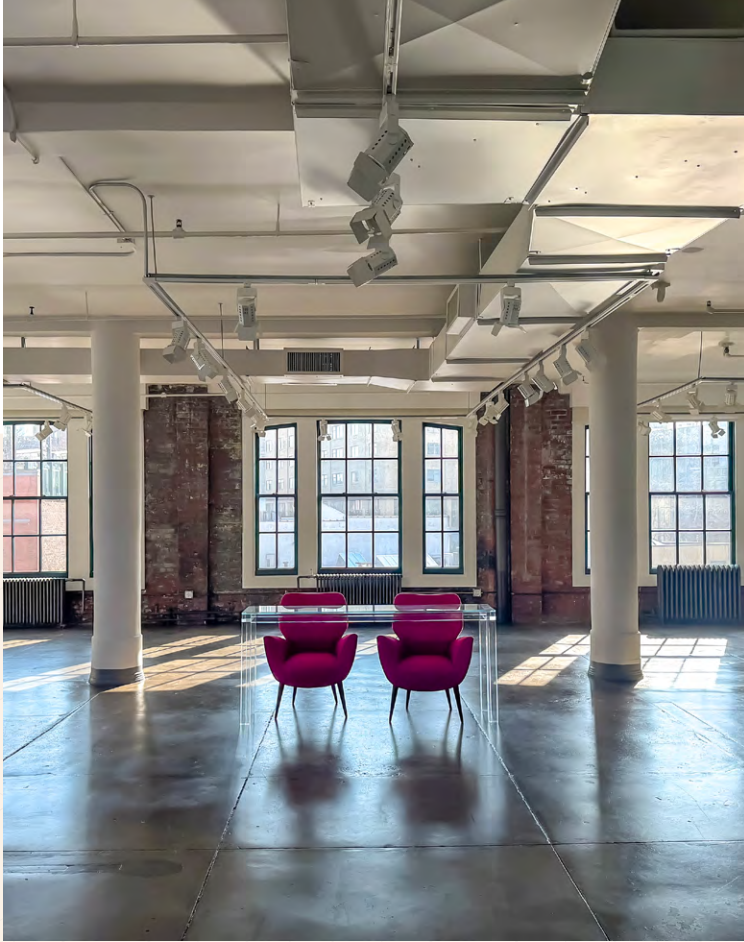
Possible Divisions - 6,392 RSF / 2,116 RSF

- Modern space with natural light from oversized south-facing windows, exposed brick, concrete floors, and 15' ceilings.
- Fully furnished, wired, and ready for immediate occupancy.
- Features: open seating for 43, 2 conference rooms, 6 phone booths, pantry with seating, wellness room, collaboration areas, soundproof podcast studio, reception, and all-hands area

SUITE 207 / 18,685 RSF

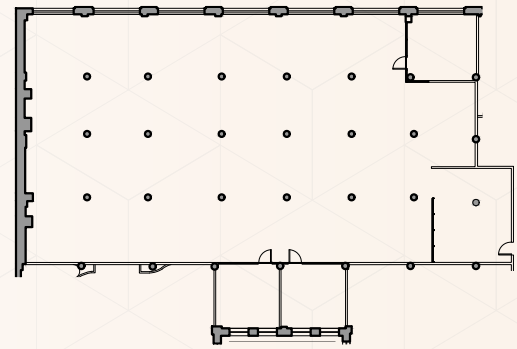
Possible Divisions - 13,429 RSF / 5,253 RSF

- Modern, colorful space with abundant natural light, exposed brick, concrete floors, and 15' ceilings.
- Fully furnished, wired, and move-in ready.
- Features: open seating for 112, 6 conference rooms, 8 phone booths, oversized and small pantries, 2 wellness rooms, collaboration areas, reception, and all-hands area.



SUITE 304 / 3,144 RSF

- Bright space featuring an open layout, pantry, and view of The High Line.
- Finished with exposed brick, concrete floors, oversized windows, 11'6" ceilings, and a skylight.

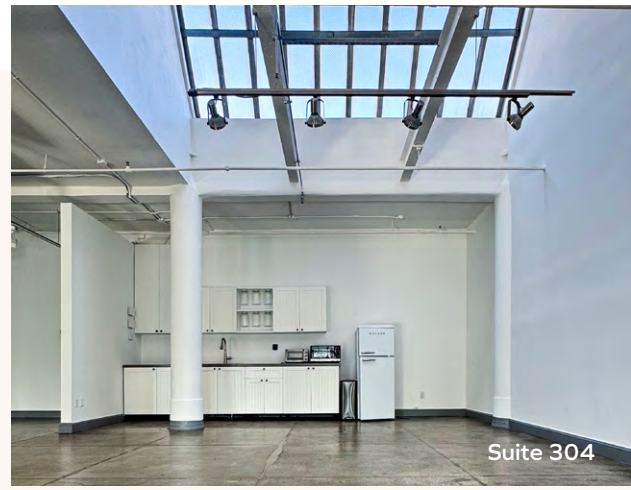


SUITE 312 / 10,158 RSF

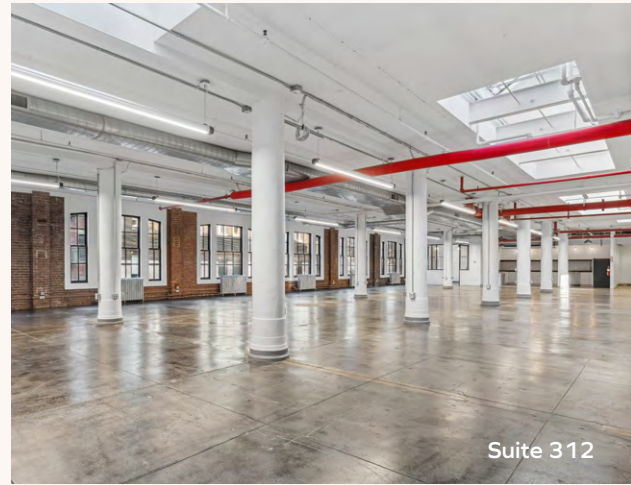
- Built space featuring 3 medium conference rooms, large open area, pantry, and a reception area.
- Finished with exposed brick, multiple skylights, concrete floors and 11'6" ceilings.



Suite 203



Suite 304



Suite 312



Suite 207



Meatpacking District

Once known as an industrial hub for its slaughterhouses, New York City's Meatpacking District has transformed into a dynamic neighborhood blending luxury, culture, and history. Centrally located within the Meatpacking District, 416 West 13th Street is surrounded by the headquarters of leading tech, media, commerce, and financial corporations, including Google, Apple, X (formerly Twitter), Samsung, and more.

With immediate access to Citi Bikes, the West Side Highway, and the **123ACE** and **L** subway lines, 416 West 13th Street offers unparalleled convenience for both work and leisure.





416 WEST 13TH STREET



For more information, please contact exclusive leasing agents

JOSEPH GERVINO

D. 212 858 0798 | M. 631 988 5320
joseph.gervino@avisonyoung.com

PETER JOHNSON

D. 212 729 6632 | M. 203 536 1990
peter.johnson@avisonyoung.com

ALEXIS ODGERS

D. 917 877 6027 | M. 484 832 9370
alexis.odgers@avisonyoung.com

ALEXA DAMON

D. 212 371 2277 | M. 631 807 1592
alexa.damon@avisonyoung.com

**AVISON
YOUNG**