



New York, NY

Brooklyn

2121 Westbury Court

a foundation for nearly 100 years



Location: Brooklyn: Crown Heights Section (Westbury Court and Flatbush Avenue)

Retail GLA: 5,619 sf

Residential: 66 Apartments

Demographics:

2024	.5 Mile	1 Mile	3 Mile
Population	74,792	149,584	1,345,247
Average HH Income	\$72,910	\$79,413	\$80,009
Total HH	30,027	60,053	503,074
Median Age	38.6	37.2	35.1



MILBROOK PROPERTIES LTD.
 CHARLES HIRSCH, PRESIDENT
 CHIRSCH@MILBROOKPROPERTIES.COM
 T (516) 869-1240
 F (516) 869-8576
 42 BAYVIEW AVENUE, MANHASSET, NY 11030
 WWW.MILBROOKPROPERTIES.COM

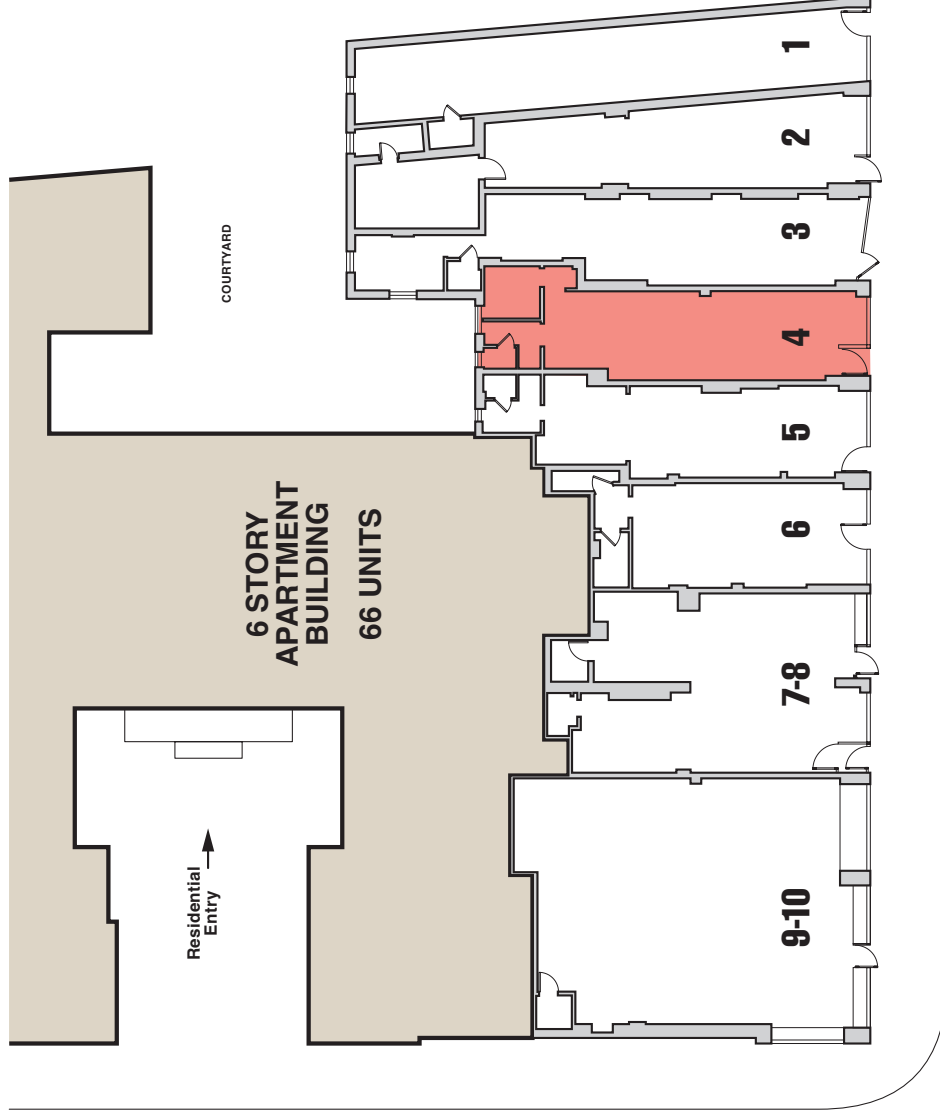
New York City Brooklyn

2121 Westbury Court



Store	Addr.	Tenant	Size
1.	662	Barber	684 sf
2.	664	Cupcakes	676 sf
3.	666	Botanica Store	629 sf
4.	668	Available - 2nd Gen Wet Use	544 sf
5.	668A	Tailor	515 sf
6.	670	Ladies Boutique	462 sf
7-8.	672-674	Human Hair	813 sf
9-10.	676	American Restaurant	1,296 sf + bsmt

all store addresses are located on Flatbush Avenue



For information contact:

Charles Hirsch

President

Milbrook Properties Ltd.

42 Bayview Avenue

Manhasset, NY 11030

Email: chirsch@milbrookproperties.com

Tel: (516) 869-1240

Fax: (516) 869-8576

FLATBUSH AVENUE