

**FOR LEASE**

625-629 8th Avenue  
San Diego, California 92101



# Ground Floor Suite in East Village **For Lease**

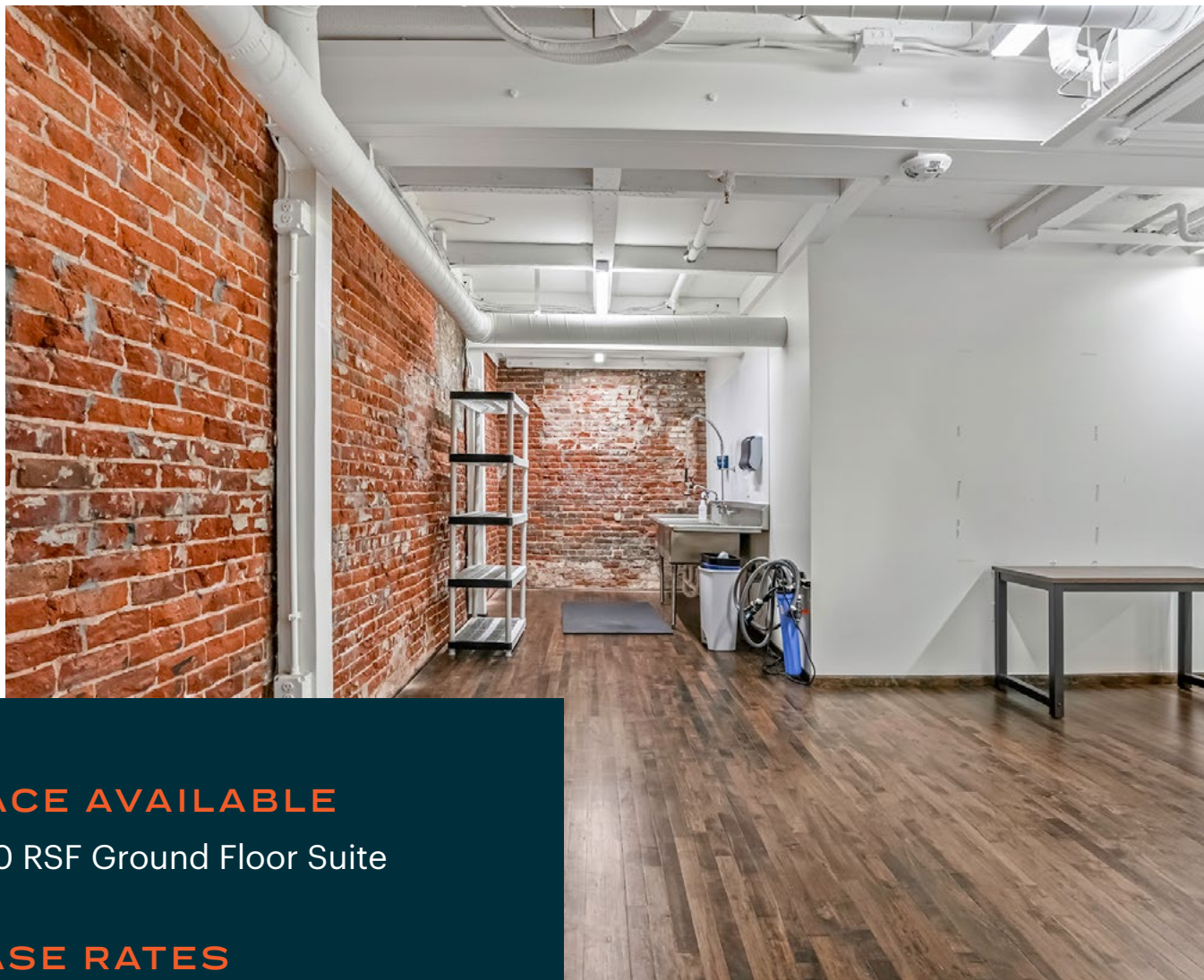
**EMMETT CAHILL**  
619.243.8470  
ecahill@qfcre.com  
BRE #02033604

**PETER WRIGHT**  
619.243.8450  
pwright@qfcre.com  
BRE #01846272

**DOMINICK MARTINEZ**  
619.243.8468  
dmartinez@qfcre.com  
BRE #02191570

The information contained here has been obtained from sources considered to be reliable, but no guarantee of its accuracy is made by this company. In addition, no representation is made respecting zoning, condition of title, dimensions or any matters of a legal or environmental nature. Such matters should be referred to legal counsel for determination. Terms and conditions are subject to change without prior notice. Subject to errors and omissions.





## SPACE AVAILABLE

2,000 RSF Ground Floor Suite

## LEASE RATES

Contact Broker

## LOCATION

- Bay City Brewing located on the ground floor and roof deck
- Few blocks to both I-5 freeway and Harbor Drive
- Close walking proximity to Gaslamp District, Petco Park, Restaurants, and Amenities



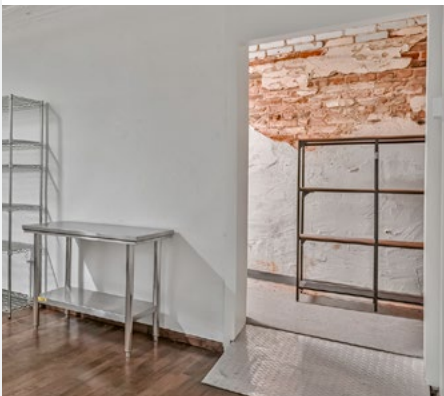
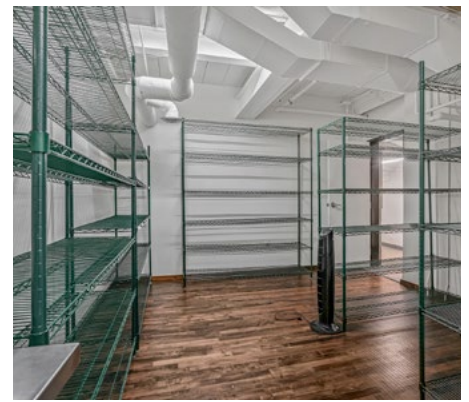
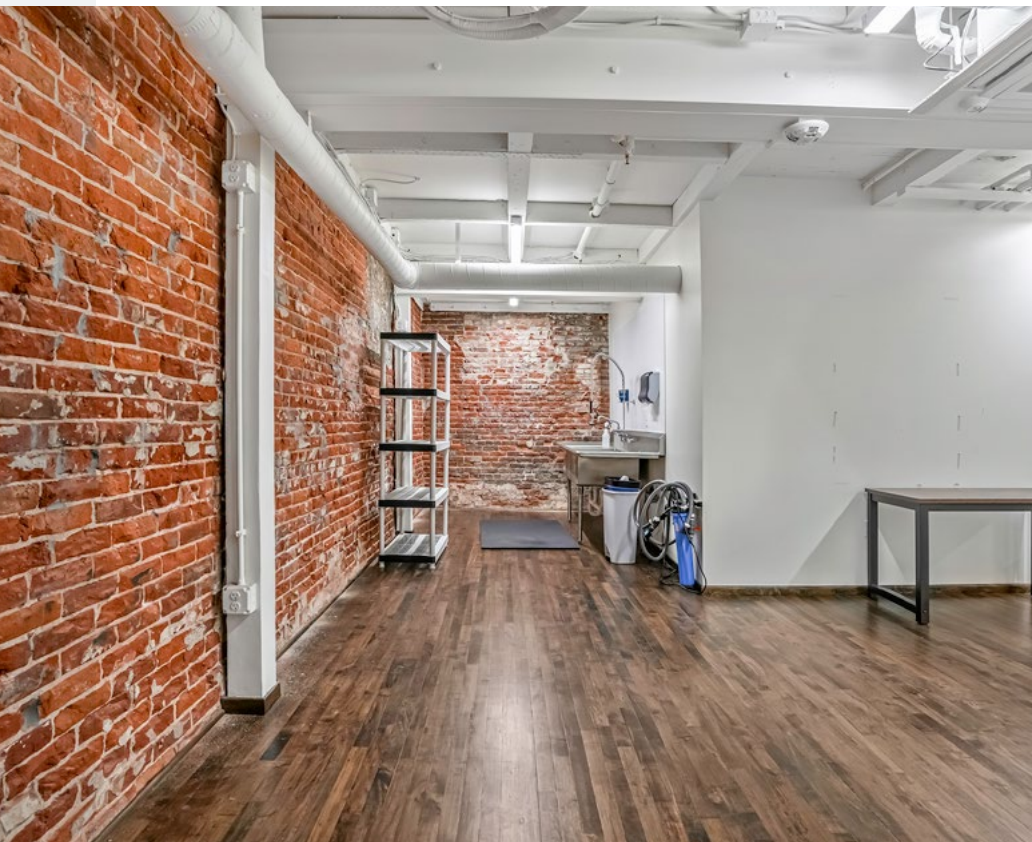
**EMMETT CAHILL**  
619.243.8470  
ecahill@qfcre.com  
BRE #02033604

**PETER WRIGHT**  
619.243.8450  
pwright@qfcre.com  
BRE #01846272

**DOMINICK MARTINEZ**  
619.243.8468  
dmartinez@qfcre.com  
BRE #02191570

*The information contained here has been obtained from sources considered to be reliable, but no guarantee of its accuracy is made by this company. In addition, no representation is made respecting zoning, condition of title, dimensions or any matters of a legal or environmental nature. Such matters should be referred to legal counsel for determination. Terms and conditions are subject to change without prior notice. Subject to errors and omissions.*





**EMMETT CAHILL**  
619.243.8470  
ecahill@qfcre.com  
BRE #02033604

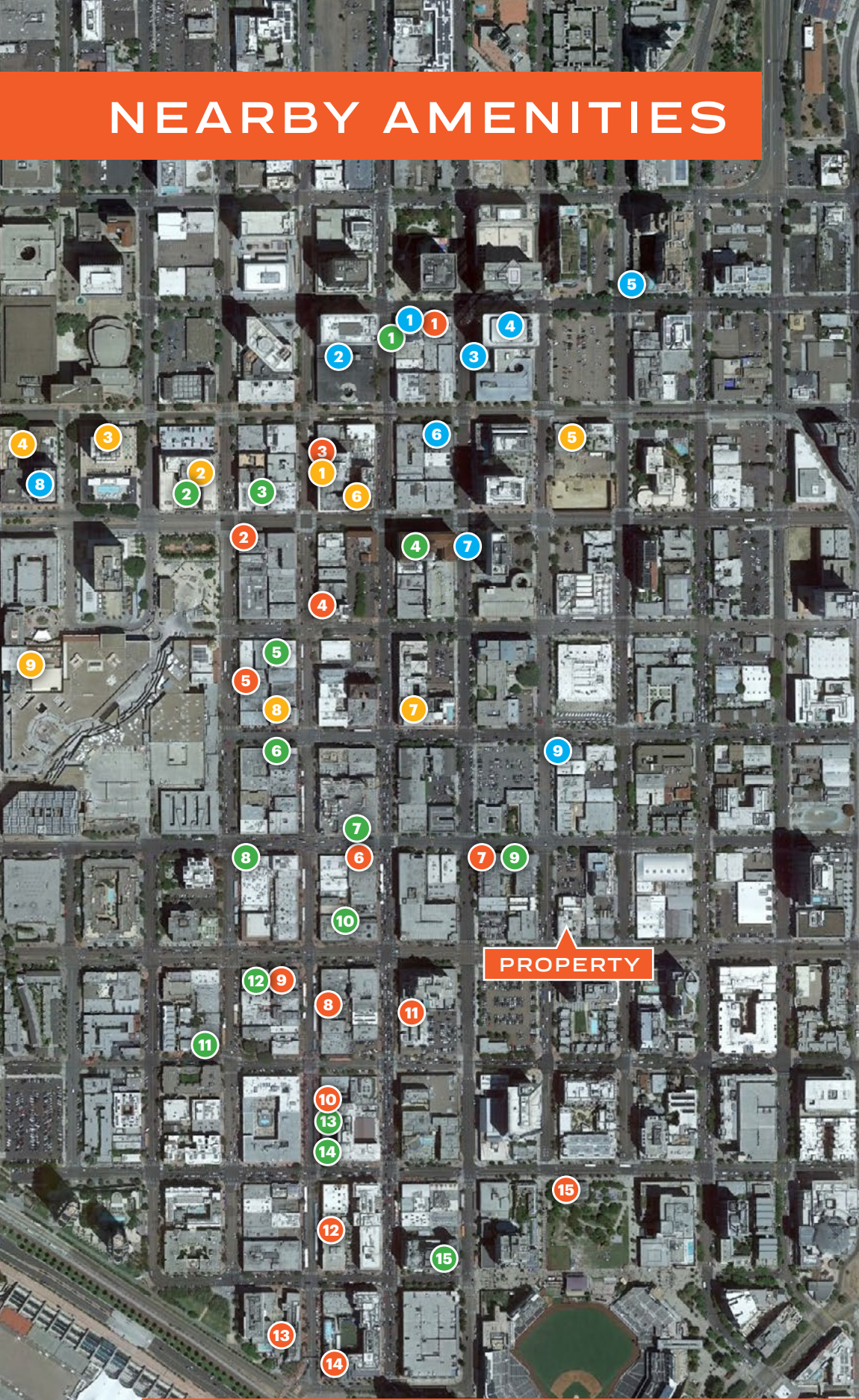
**PETER WRIGHT**  
619.243.8450  
pwright@qfcre.com  
BRE #01846272

**DOMINICK MARTINEZ**  
619.243.8468  
dmartinez@qfcre.com  
BRE #02191570

*The information contained here has been obtained from sources considered to be reliable, but no guarantee of its accuracy is made by this company. In addition, no representation is made respecting zoning, condition of title, dimensions or any matters of a legal or environmental nature. Such matters should be referred to legal counsel for determination. Terms and conditions are subject to change without prior notice. Subject to errors and omissions.*



# NEARBY AMENITIES



## RESTAURANTS

1. Donut Bar
2. Gaslamp Fish House
3. Curadero
4. Melting Pot
5. Bandar Restaurant
6. Fogo de Chao
7. Breakfast Republic
8. Rustic Root
9. El Chingon
10. Lionfish
11. The Nolen
12. Cafe Sevilla
13. Lou & Mickey's
14. Nobu
15. Social Tap

## HOTELS

1. Kimpton Hotel
2. The US Grant
3. The Westgate Hotel
4. The Bristol Hotel
5. Hotel Churchill
6. Courtyard Marriott
7. Andaz San Diego
8. The Keating Hotel
9. The Westin

## BARS & BREWPUBS

1. Stout Public House
2. Rendezvous
3. Phantom Lounge
4. Parq
5. Gaslamp Tavern
6. Atomic
7. 5th & Sky
8. Tin Roof
9. Noble Experiment
10. Side Bar
11. Fluxx
12. Prohibition
13. The Pool House
14. Fifth and Rose
15. Altitude

## COFFEE

1. Starbucks
2. 401 Brew Street
3. Coffee N' Talk
4. 7 Cafe
5. Little Owl Coffee
6. Organo Gold
7. The Bean Box
8. Blue Bottle Coffee
9. Tired Eyes Coffee

**EMMETT CAHILL**

619.243.8470

ecahill@qfcre.com

BRE #02033604

**PETER WRIGHT**

619.243.8450

pwright@qfcre.com

BRE #01846272

**DOMINICK MARTINEZ**

619.243.8468

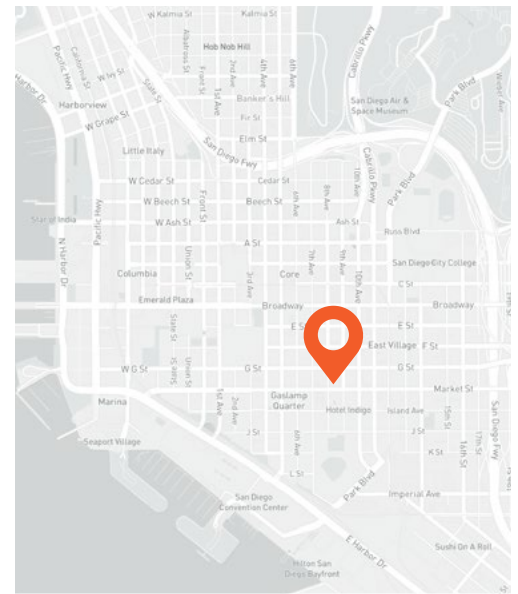
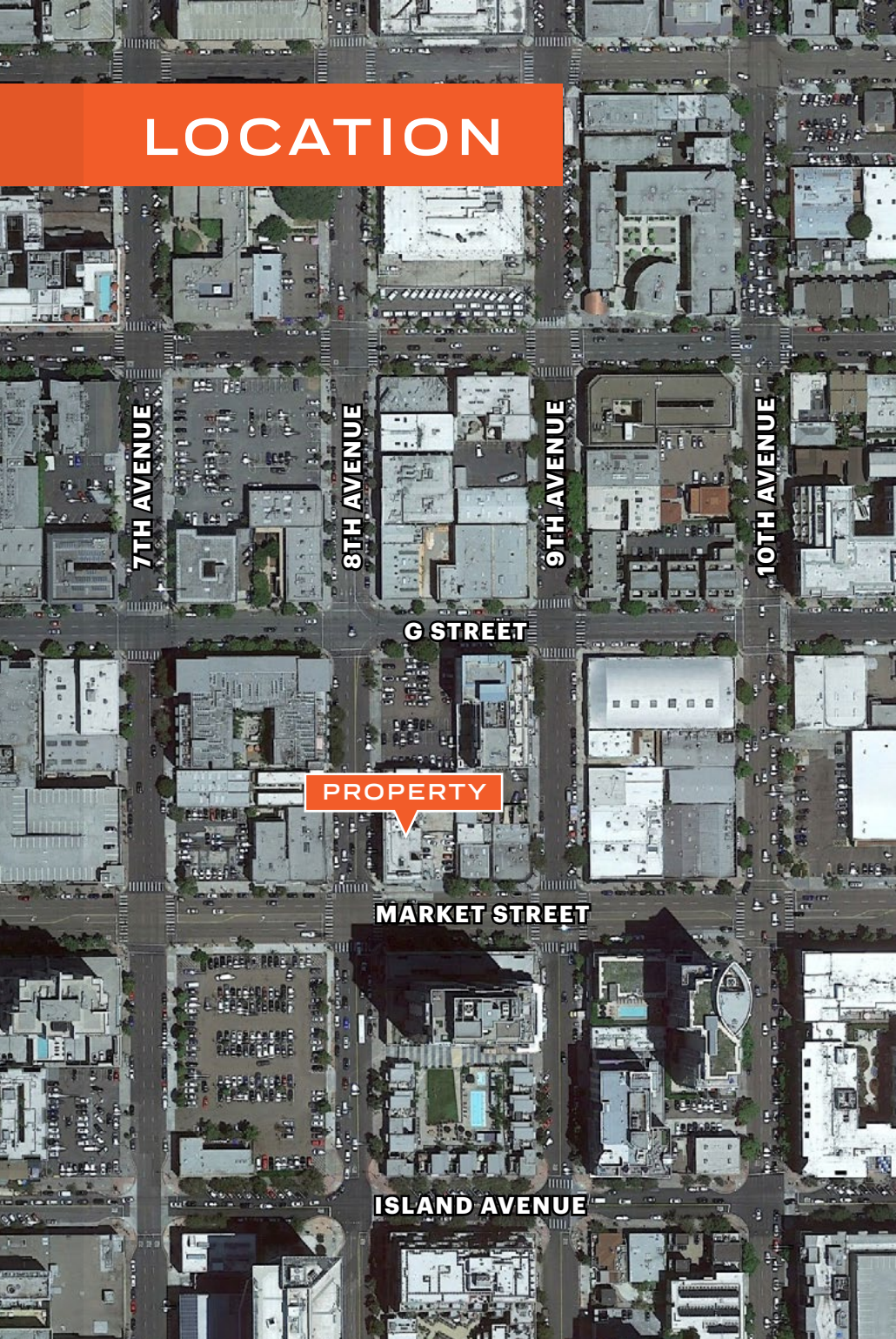
dmartinez@qfcre.com

BRE #02191570

The information contained here has been obtained from sources considered to be reliable, but no guarantee of its accuracy is made by this company. In addition, no representation is made respecting zoning, condition of title, dimensions or any matters of a legal or environmental nature. Such matters should be referred to legal counsel for determination. Terms and conditions are subject to change without prior notice. Subject to errors and omissions.



# LOCATION



- Terrific location on 9th Avenue in East Village of Downtown San Diego
- In close proximity to Petco Park, San Diego Convention Center, and Horton Plaza
- Dozens of restaurants, cafes and bars within a 5- block radius

## WALKING DISTANCE

to numerous restaurants & retail

## STEPS

to Petco Park & trolley station

**EMMETT CAHILL**  
619.243.8470  
ecahill@qfcre.com  
BRE #02033604

**PETER WRIGHT**  
619.243.8450  
pwright@qfcre.com  
BRE #01846272

**DOMINICK MARTINEZ**  
619.243.8468  
dmartinez@qfcre.com  
BRE #02191570

The information contained here has been obtained from sources considered to be reliable, but no guarantee of its accuracy is made by this company. In addition, no representation is made respecting zoning, condition of title, dimensions or any matters of a legal or environmental nature. Such matters should be referred to legal counsel for determination. Terms and conditions are subject to change without prior notice. Subject to errors and omissions.



**FOR LEASE**

625-629 8th Avenue  
San Diego, California 92101



# Contact Information

**QFC REAL ESTATE**

1495 Pacific Highway, Suite 450  
San Diego, CA 92101  
619.243.8454 • [qfcre.com](http://qfcre.com)

**EMMETT CAHILL**

619.243.8470  
[ecahill@qfcre.com](mailto:ecahill@qfcre.com)  
BRE #02033604

**PETER WRIGHT**

619.243.8450  
[pwright@qfcre.com](mailto:pwright@qfcre.com)  
BRE #01846272

**DOMINICK MARTINEZ**

619.243.8468  
[dmartinez@qfcre.com](mailto:dmartinez@qfcre.com)  
BRE #02191570

The information contained here has been obtained from sources considered to be reliable, but no guarantee of its accuracy is made by this company. In addition, no representation is made respecting zoning, condition of title, dimensions or any matters of a legal or environmental nature. Such matters should be referred to legal counsel for determination. Terms and conditions are subject to change without prior notice. Subject to errors and omissions.