

# Hunt River Commons



20 Frenchtown Road  
North Kingstown, Rhode Island 02852  
[broadreachretail.com](http://broadreachretail.com)



## Property Features

- High-volume grocery-anchored shopping center
- Strong traffic counts (11,556+ cars/day on Frenchtown Road & 25,839+ cars/day on Post Road)
- Average household income: ~\$117,845
- Signalized entrance on Frenchtown Road

## Join these Retailers



## Retail Spaces for Lease

Suite	Size	Available
2	4,548 sf	NOW
8B	3,633 sf	Sep 2025
	.25 acres	NOW

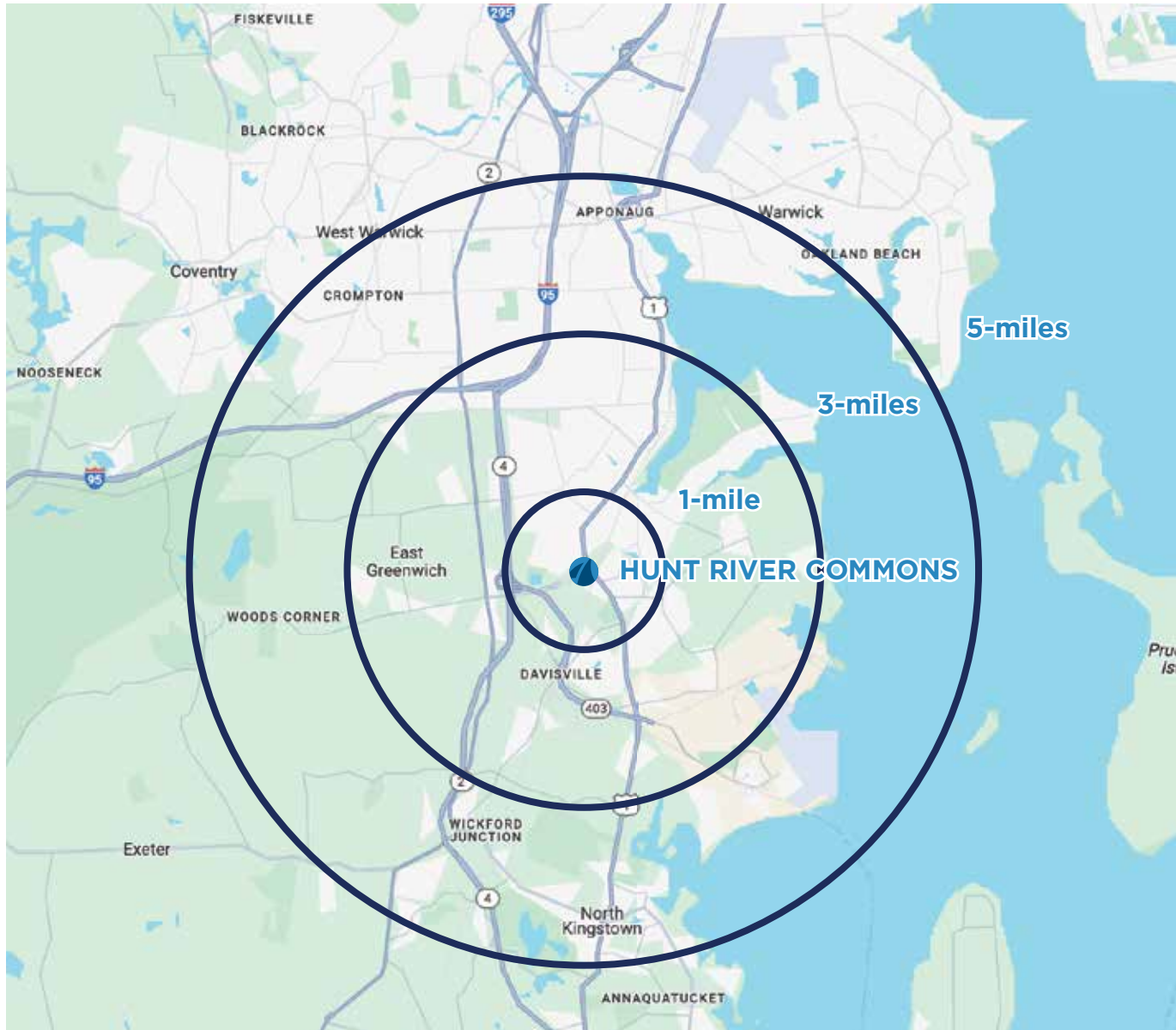
Disclaimer: While Broad Reach Retail Partners, LLC and its affiliates believe the information contained herein to be true and accurate, they make no claims or warranties. Any prospective tenant should conduct thorough, independent due diligence.

For Leasing Information, contact: **Jessica Hansen**  
[jhansen@broadreachretail.com](mailto:jhansen@broadreachretail.com) 443.813.2514



# Location

**Hunt River Commons Shopping Center**  
20 Frenchtown Road  
North Kingstown, Rhode Island 02852



## Demographics (2023 Estimates)

- 1-Mile Radius
  - Population: 3,976
  - Average Household Income: \$150,826
- 3-Mile Radius
  - Population: 26,941
  - Average Household Income: \$159,111
- 5-Mile Radius
  - Population: 66,276
  - Average Household Income: \$138,100

## Property Highlights

- 149,321 square foot shopping center
- Anchors: Stop & Shop, Marshalls, and Planet Fitness
- Junior Anchors: Great Clips, Sprint, Citizens Bank, and Rhode Eyeland
- Located in North Kingstown, just south of Warwick and East Greenwich
- Direct, easy access to three major roads: RI 4, Route 403, & Route 1

Disclaimer: While Broad Reach Retail Partners, LLC and its affiliates believe the information contained herein to be true and accurate, they make no claims or warranties. Any prospective tenant should conduct thorough, independent due diligence.

**For Leasing Information, contact: Jessica Hansen**  
jhansen@broadreachretail.com 443.813.2514



# Site Plan



Hunt River Commons Shopping Center  
20 Frenchtown Road  
North Kingstown, Rhode Island 02852



Suite	Tenant	SF
1	Marshall's	35,820
<b>2</b>	<b>Available</b>	<b>4,548</b>
3	Great Clips	1,400
4	T-Mobile	1,400
5/6	Talent Factory	12,363
7	Ivy Rehab Physical Therapy	2,400
8A	Planet Fitness	18,261
<b>8B</b>	<b>Available September 2025</b>	<b>3,633</b>
9	Pokemoto	1,200
10	So Co Cycle	2,000
11	Rhode Eyeland	2,500
12	Stop & Shop	59,245
13	Citizens Bank	4,551
<b>Total</b>		<b>149,321</b>
<b>Potential Pad Site</b>		<b>.25 Acres</b>

Disclaimer: While Broad Reach Retail Partners, LLC and its affiliates believe the information contained herein to be true and accurate, they make no claims or warranties. Any prospective tenant should conduct thorough, independent due diligence.

For Leasing Information, contact: Jessica Hansen  
jhansen@broadreachretail.com 443.813.2514

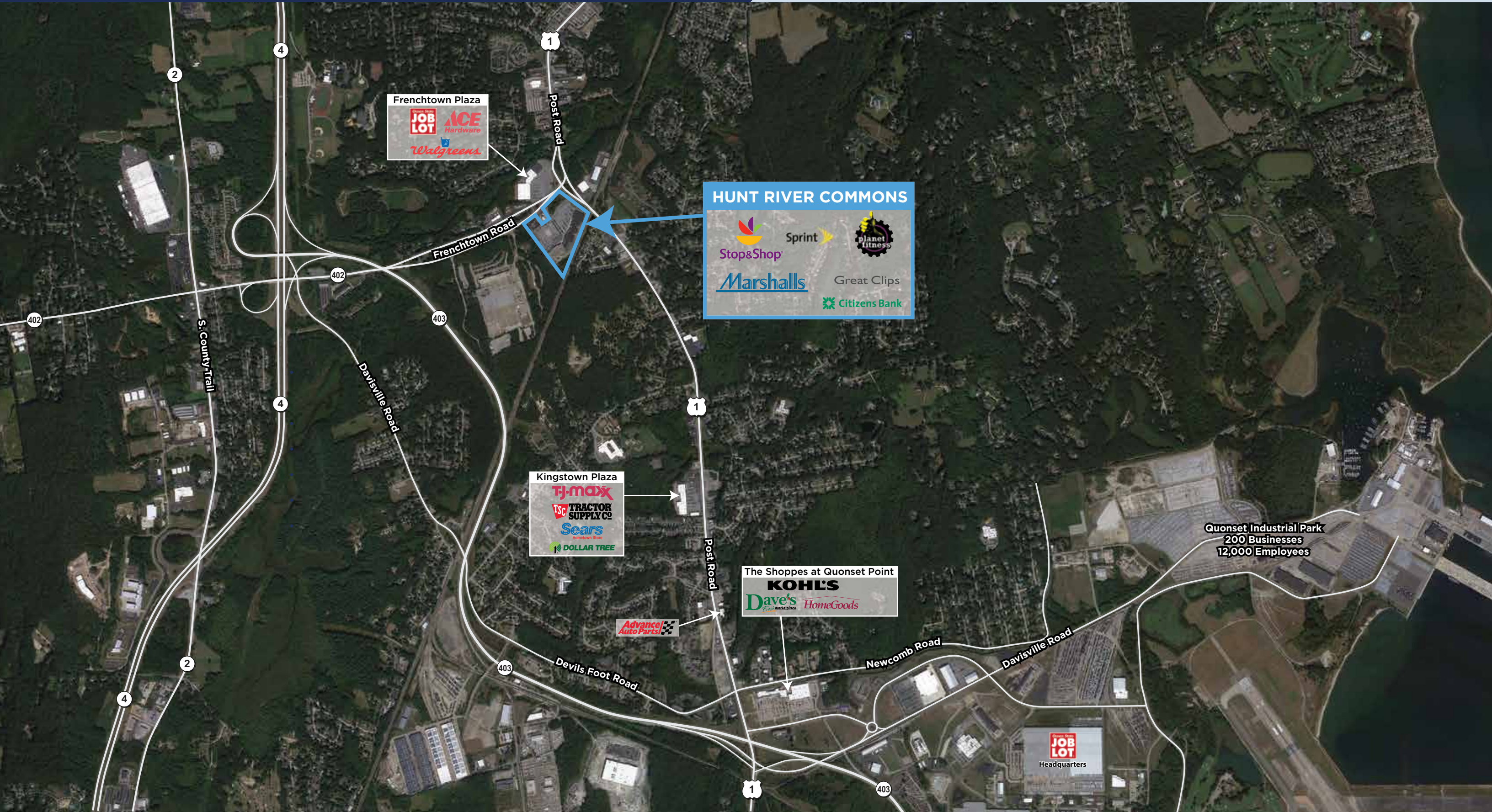




# Market Aerial



Hunt River Commons Shopping Center  
20 Frenchtown Road  
North Kingstown, Rhode Island 02852



Disclaimer: While Broad Reach Retail Partners, LLC and its affiliates believe the information contained herein to be true and accurate, they make no claims or warranties. Any prospective tenant should conduct thorough, independent due diligence.

For Leasing Information, contact: Jessica Hansen  
jhansen@broadreachretail.com 443.813.2514

