



OFFICE SPACE

**215 Coram Ave
Shelton**

FOR LEASE

**Various unit sizes
From 120 SF**



GORGEOUS THREE STORY OFFICE BUILDING

Various sized first and second floor units are available, ranging from 120sf to 1,700sf

This three story, former residence consists of a classic foyer with a beveled, glass entry door, a foyer and 9 office rooms that are available for lease.

Lease options:

Entire First & Second Floor: \$4,900/Month Gross

Entire 1st floor: \$2,600/Month Gross

Entire 2nd floor: \$2,600/Month Gross

Individual Room Suites: starting at \$375/Month Gross

The building is situated at the corner of Coram Avenue & Maltby Street with substantial frontage on each street. The property has been used as a law office for many years and is conveniently located near the Shelton City Hall and Route 8.

Call Steve Hodson Today at 203-260-1369!

The information above has been obtained from sources believed reliable. While we do not doubt its accuracy we have not verified it and make no guarantee, warranty or representation about it

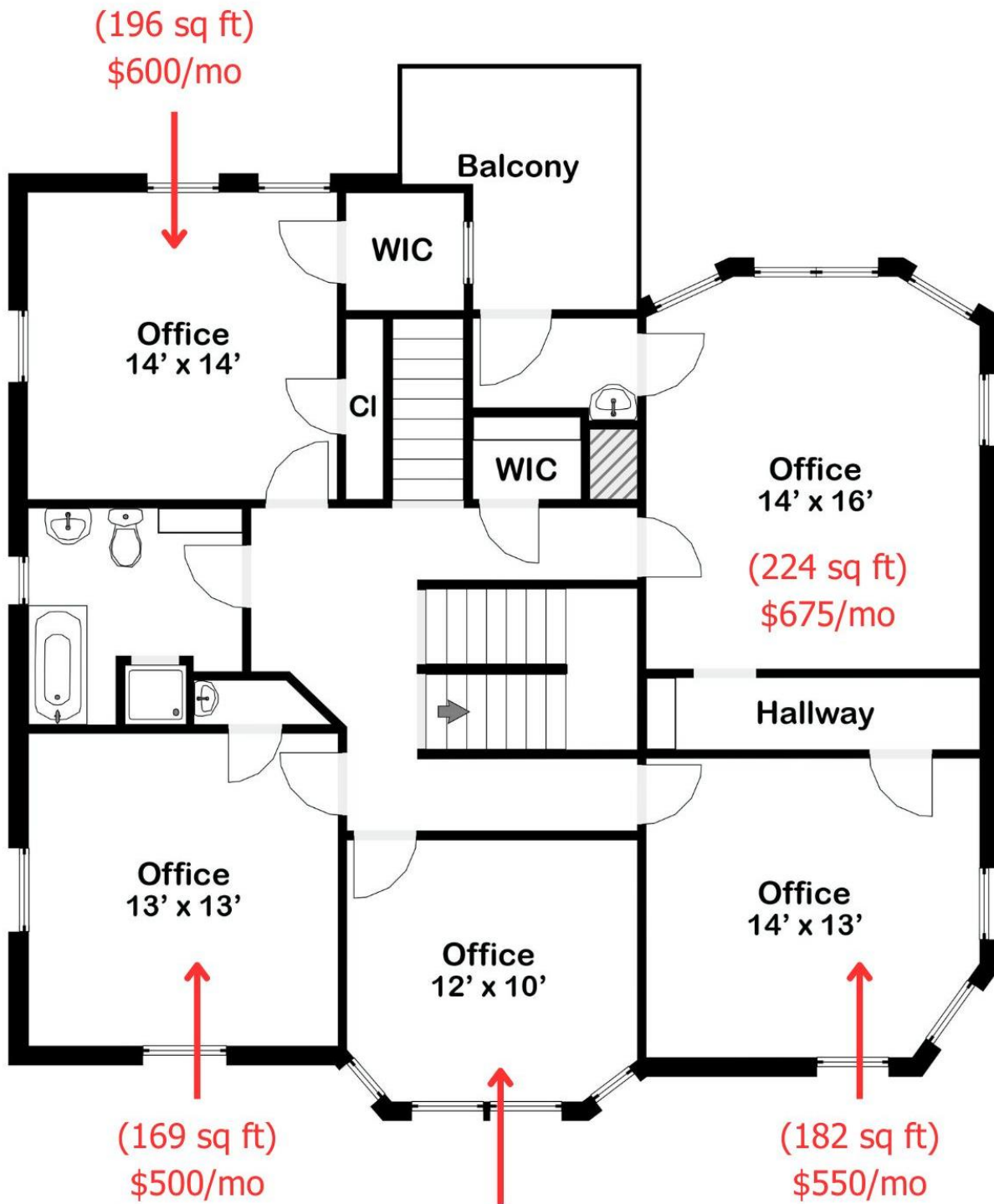


Stephen J. Hodson/Hodson Realty, Inc.
6515 Main St. , Trumbull, Ct. 06611
Phone: 203-268-7743
Cell: 203-260-1369
Steve@HodsonRealty.com
www.HodsonCommercial.com



Integrity. Quality. Experience. Service.

▼2nd Floor



Fairfield County Floor Plans. (203) 449-5743. All measurements are estimates. For marketing purposes only.

Page 2/4

Fairfield County Floor Plans
fcfloorplans@charter.net

(203) 449-5743

(120 sq ft)
\$375/mo

▼ 1st Floor

