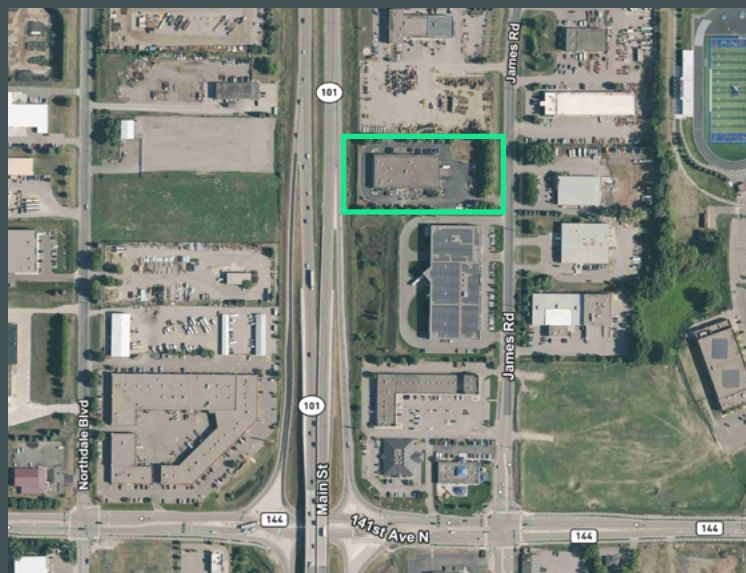
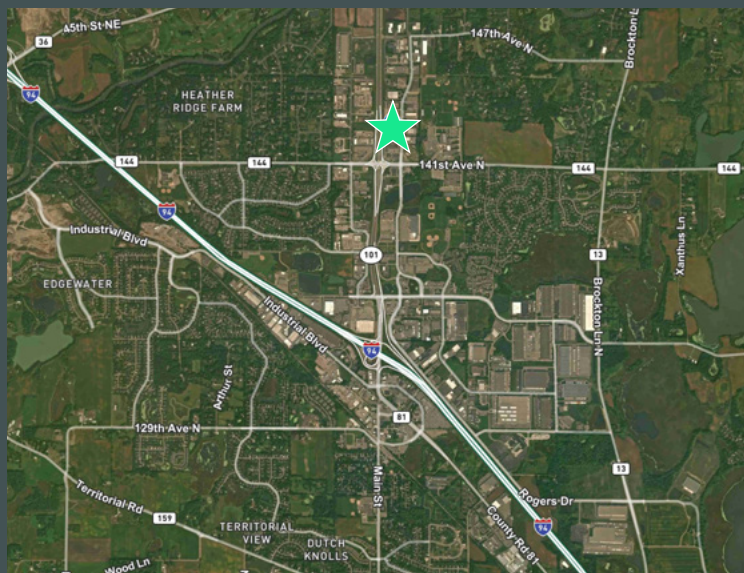


14295 James Road

Rogers, MN 55343



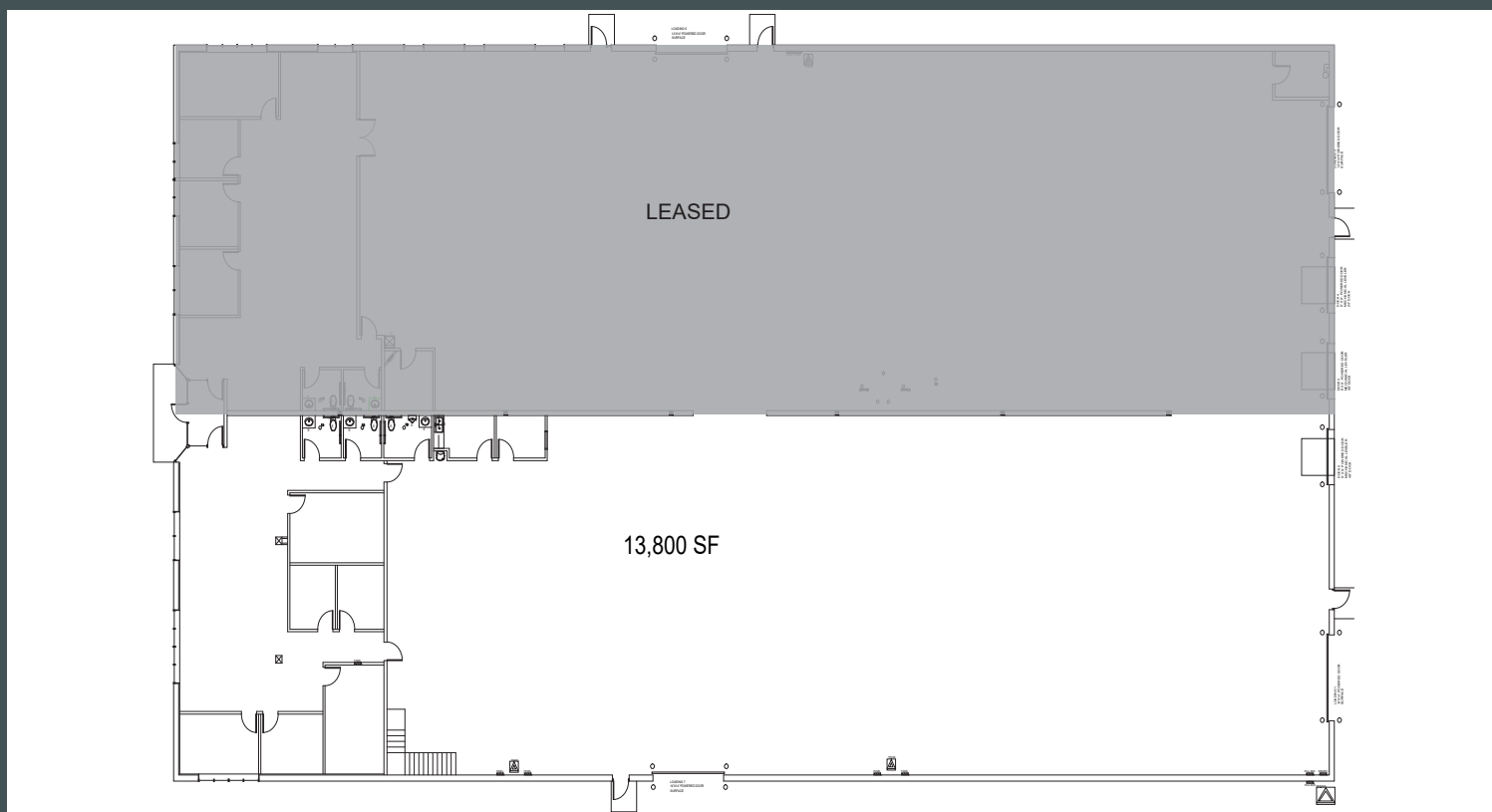
14295 James Road
Rogers, MN 55343

For Sublease



PROPERTY FEATURES

| | | | |
|---------------|-----------------------------------------------------------|--------------------------|-----------------------------------------------------|
| Building Size | 27,600 SF | Loading | 1 dock door (10'x10') 2 drive-in doors (12'x14') |
| Available SF | 13,800 SF Total 2,513 SF Office 11,287 SF Warehouse | Rental Rates | \$14.00 Gross PSF \$16,100 per month |
| Year Built | 1999 | Available Date | Immediately |
| Parking | 2.9/1,000 SF | Sublease Expiration Date | August 30, 2029 |
| Clear Height | 18' | | |



Contact Us

Jonathan Juris

Vice President
+1 612 597 6701
jonathan.juris@cbre.com

Matt Oelschlager

Executive Vice President
+1 612 532 4747
matt.oelschlager@cbre.com

© 2025 CBRE, Inc. All rights reserved. This information has been obtained from sources believed reliable, but has not been verified for accuracy or completeness. You should conduct a careful, independent investigation of the property and verify all information. Any reliance on this information is solely at your own risk. CBRE and the CBRE logo are service marks of CBRE, Inc. All other marks displayed on this document are the property of their respective owners, and the use of such logos does not imply any affiliation with or endorsement of CBRE. Photos herein are the property of their respective owners. Use of these images without the express written consent of the owner is prohibited.