

LOOKING TO BUILD YOUR DREAM HOME IN 2026?

4056 HORSESHOE VALLEY RD

VACANT LAND FOR SALE - 1.88 ACRES

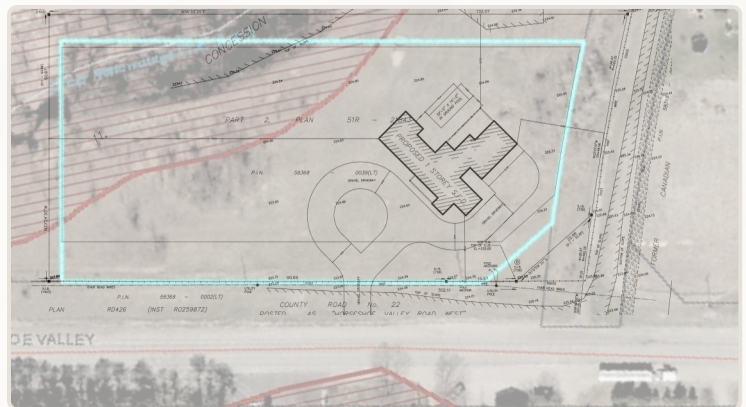
- Prime flat & wooded parcel in Anten Mills
- Zoned Agricultural (A) with flexible permitted uses
- Suitable for: custom home build, hobby farm, equestrian use, or long-term investment
- Existing preliminary house drawings included — strong head start for building
- Excellent privacy, mature trees, and natural surroundings
- Direct frontage on Horseshoe Valley Road

ANTEN MILLS, SPRINGWATER

- One of Springwater's most desirable, tight-knit communities
- Known for rural charm, safety, and high-quality living
- Quick access to Barrie, Wasaga Beach & Highway 400
- Minutes from Horseshoe Resort, Snow Valley, golf courses & extensive trail systems
- Surrounded by conservation areas, forests, and outdoor recreation
- Strong township support for planning, zoning, and development

BUILD READY

- Flat topography ideal for construction
- Concept/preliminary drawings for a custom single-family home already issued
- Easy access for builders and trades
- Efficient lot layout for residential or agricultural-oriented designs
- Opportunity to move forward quickly with an already-established vision



**COLDWELL BANKER
COMMERCIAL**

THE REAL ESTATE
CENTRE, BROKERAGE

lisa
MALCOLM
group

LISA MALCOLM, Broker
Mobile: 905.622.4469
Lisa@LisaMalcolmGroup.com