

# 2001 Westown Pkwy.

2001 Westown Parkway  
West Des Moines, Iowa 50265  
[www.cbre.com/desmoines](http://www.cbre.com/desmoines)

This two-story, 17,509 square foot office building is located just off of 22nd Street and minutes away from I-235. Surrounded by restaurants, office buildings, and residential communities nearby, 2001 Westown Pkwy is an ideal value-add investment located in an established corridor. The investment boasts a diverse tenant mix, including Allergy Institute, P.C., Geopp Family Dental, and Valley Optical. Nearby redevelopment projects include the recently completed West Bank and ClaimDoc headquarters building as well as renovated Westowne Center.

## Pricing

+ \$1,875,000 (\$107/SF)

+ 78% occupied

\*Financials Available upon request

## Property Features

- + 17,509 SF
  - 3,265 SF vacancy
- + 2.55 Acres
- + Built in 1997
- + 70 parking spaces
- + Nine (9) Commercial Units
- + Taxes: \$40,420/year (\$2.31/SF)



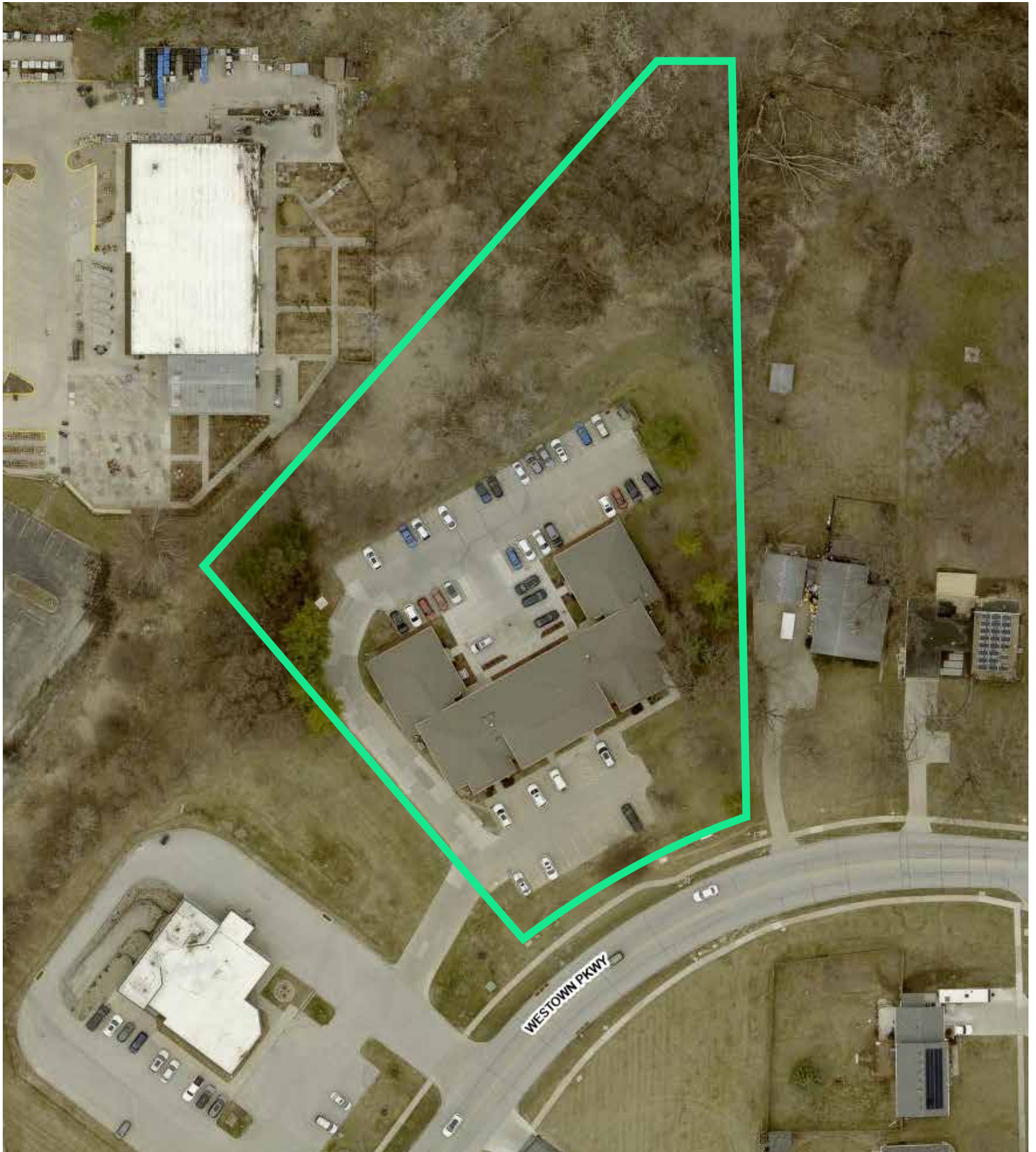
# Photos



2001 Westown Parkway  
West Des Moines, Iowa 50265

For Sale

# Aerial



# Location



## Contact Us

### Bill Wright

Senior Vice President  
+1 515 210 3050  
bill.wright2@cbre.com  
Licensed in the State of Iowa.

### Chris Pendroy, CCIM, SIOR

Senior Vice President  
+1 515 402 6600  
chris.pendroy@cbre.com  
Licensed in the State of Iowa.

### Grant Wright, CCIM

First Vice President  
+1 515 745 5113  
grant.wright@cbre.com  
Licensed in the State of Iowa.

### Dakota Little

Sales Associate  
+1 515 745 4378  
dakota.little@cbre.com  
Licensed in the State of Iowa.

© 2024 CBRE, Inc. All rights reserved. This information has been obtained from sources believed reliable, but has not been verified for accuracy or completeness. You should conduct a careful, independent investigation of the property and verify all information. Any reliance on this information is solely at your own risk. CBRE and the CBRE logo are service marks of CBRE, Inc. All other marks displayed on this document are the property of their respective owners, and the use of such logos does not imply any affiliation with or endorsement of CBRE. Photos herein are the property of their respective owners. Use of these images without the express written consent of the owner is prohibited.