

For Lease

Bio Research &
Development Growth Park



Contact us:

Tony Kennedy, CCIM

Senior Vice President
+1 314 630 4152
tony.kennedy@colliers.com

Rebekah Bahn Kingston, Esq., CCIM

Senior Vice President
+1 314 852 5134
rebekah.kingston@colliers.com

1005 N. Warson Road
Creve Coeur, MO 63132



Specifications

Asking Rate	Contact Brokers
Total Available	33,279 SF
Max Contiguous	12,374 SF
Location	39 North Innovation District www.39northstl.com
Parking	Abundant free surface parking
Building SF	109,731 SF
Constructed	2010
LEED	Gold Level

Availability

Suite	Availability	Size	Contiguous	Type
Suite 402	Vacant	8,350 SF		Office/Lab
Suite 303	Vacant	4,354 SF		Office/Lab
Suite 235	Vacant	1,480 SF	} 2,960 SF	Lab
Suite 232	Vacant	1,480 SF		Lab
Suite 220	Vacant	197 SF		Innovation Suite
Suite 218	Vacant	197 SF		Innovation Suite
Suite 217	Vacant	184 SF		Innovation Suite
Suite 215	Vacant	184 SF		Innovation Suite
Suite 101	Vacant	12,374 SF	} 16,853 SF	Office/Lab
Suite 50	Vacant	4,479 SF		Office/Lab
Total Available		33,279 SF		

1005 North Warson Road
Creve Coeur, MO 63132
BRDG Park | For Lease

Features & Amenities

- Common area equipment rooms including autoclaves
- State-of-the-art wet lab capable mechanical systems
- High-performance glass windows
- Low flow systems, and high efficiency equipment
- Heavy floor loads to reduce vibration
- Common areas with break & work rooms
- Large building conference room with audiovisual equipment
- Vending lounge
- Access to St. Louis Community College's expansive lab equipment, library, and student intern program
- Adjacent to the Danforth Center featuring:
 - » 300-seat auditorium
 - » Danforth Center Cafe
 - » Research-grade greenhouses, growth rooms and chambers, a microscopy suite, a proteomics facility, and a tissue transformation complex



Floor Layout, Floor 4



SUITE 402
8,350 SF Total
5,486 SF Lab
2,864 SF Office

Floor Layout, Floor 3



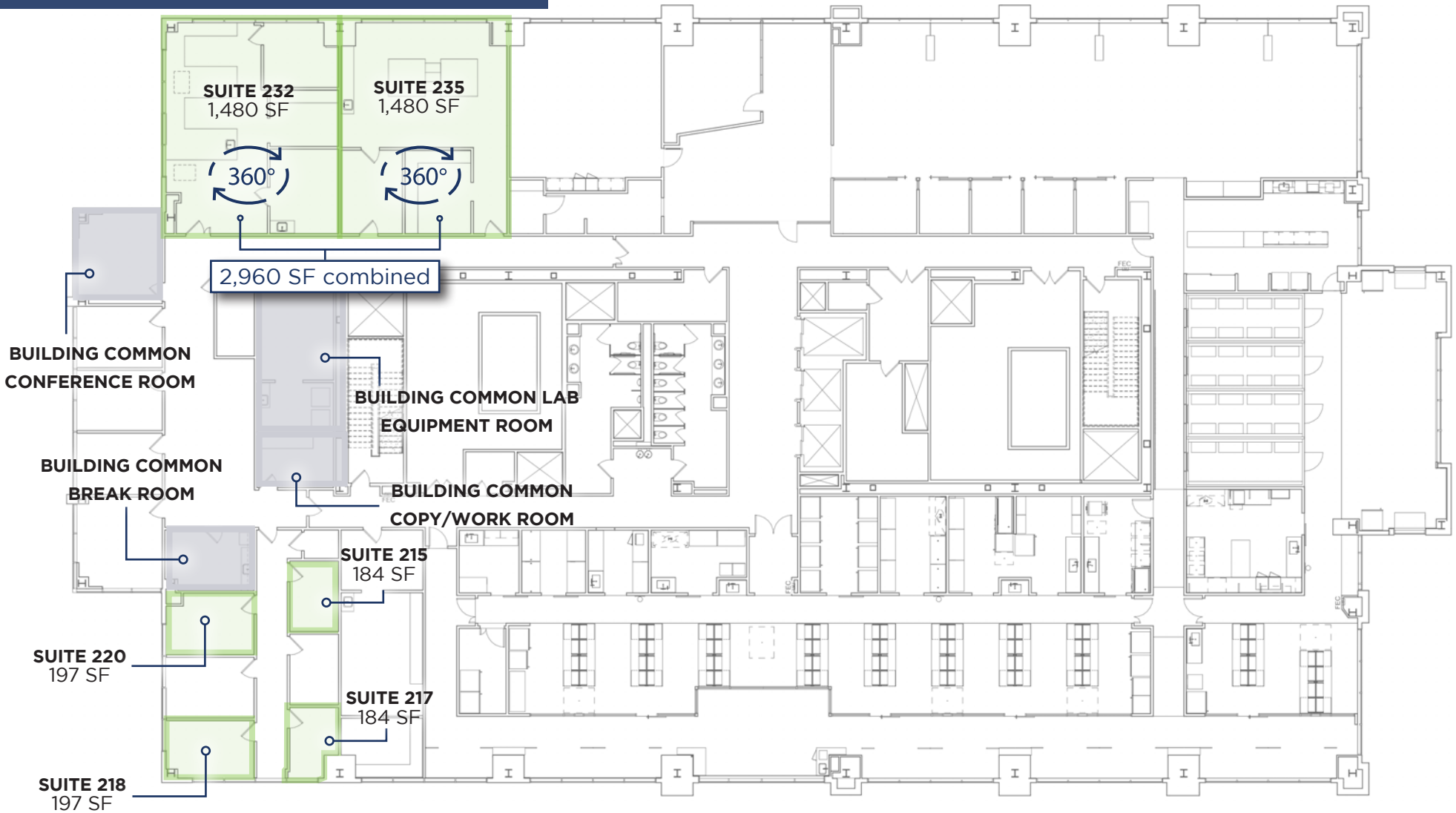
Click icon on floor plan
to view 360 tour



Floor Layout, Floor 2



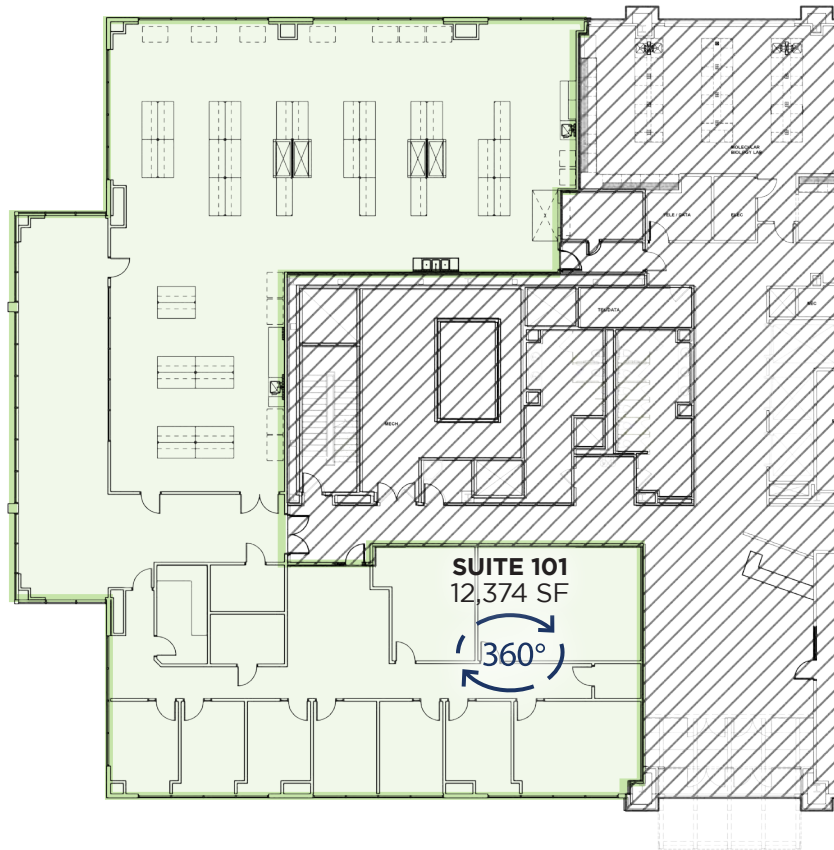
Click icon on floor plan
to view 360 tour



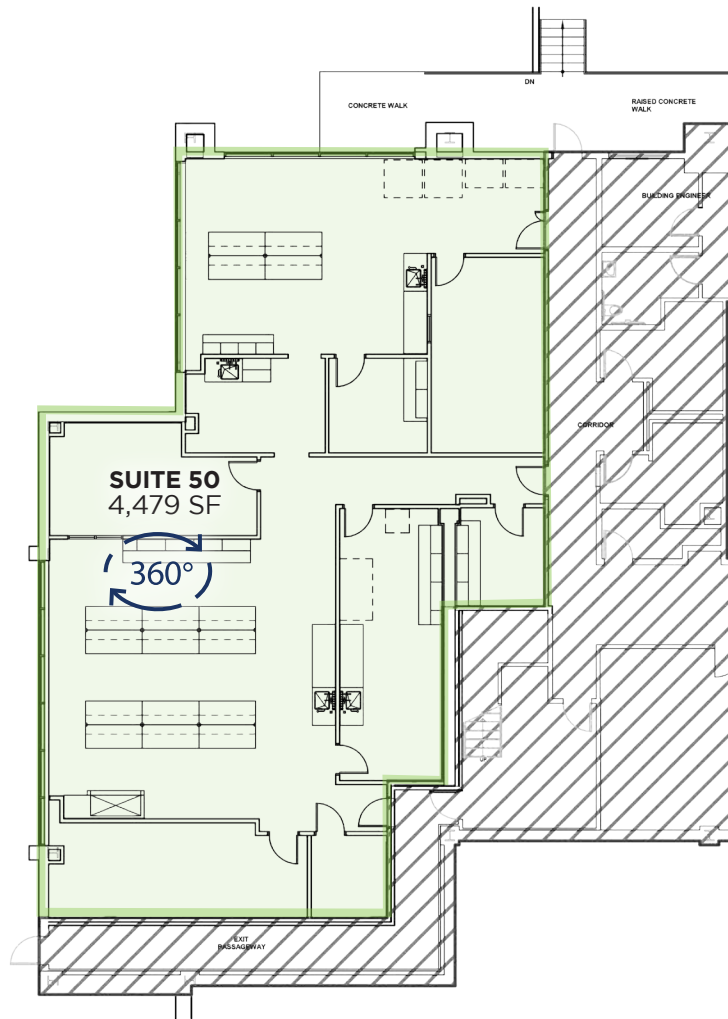
Floor 1 Availability



Click icon on floor plan
to view 360 tour



Lower Level Availability



Click icon on floor plan
to view 360 tour



The Building

Located in the heart of 39 North and adjacent to the world-renowned Danforth Plant Science Center, the Bio-Research & Development Growth Park Building (BRDG Park) is uniquely positioned to host AG-Tech plant and life-science and clean-tech companies. BRDG Park is designed for companies seeking proximity to top scientists and state-of-the-art core facilities.

The Campus

The Danforth Plant Science Center is one of the most technologically advanced bioscience facilities in the nation. The Center's research is conducted with the goal of looking outward, working toward discoveries that will provide important solutions to big problems, such as drought, malnutrition, hunger and health, as well as preserving our planet.



Class A Lab for Lease at BRDG Park

The Bio Research & Development Growth (BRDG) Park at the Danforth Plant Science Center offers leading bio research facilities with world-class wet labs and office space.



Colliers
101 South Hanley Road
Suite 1400
Clayton, MO 63105
colliers.com/stlouis

Tony Kennedy, CCIM

Senior Vice President
+1 314 630 4152
tony.kennedy@colliers.com

Rebekah Bahn Kingston, Esq., CCIM

Senior Vice President
+1 314 852 5134
rebekah.kingston@colliers.com



This document has been prepared by Colliers for advertising and general information only. Colliers makes no guarantees, representations or warranties of any kind, expressed or implied, regarding the information including, but not limited to, warranties of content, accuracy and reliability. Any interested party should undertake their own inquiries as to the accuracy of the information. Colliers excludes unequivocally all inferred or implied terms, conditions and warranties arising out of this document and excludes all liability for loss and damages arising there from. This publication is the copyrighted property of Colliers and/or its licensor(s). ©2025. All rights reserved.