

1345 FM 359 Road

BROOKSHIRE, TEXAS

± 10.25 Acres

CALL BROKER FOR PRICING



BALL COMMERCIAL

— REAL ESTATE —



Hunter M. Ball

Founder & Principal ■ hunter@ballcre.com

Tommy Wilson

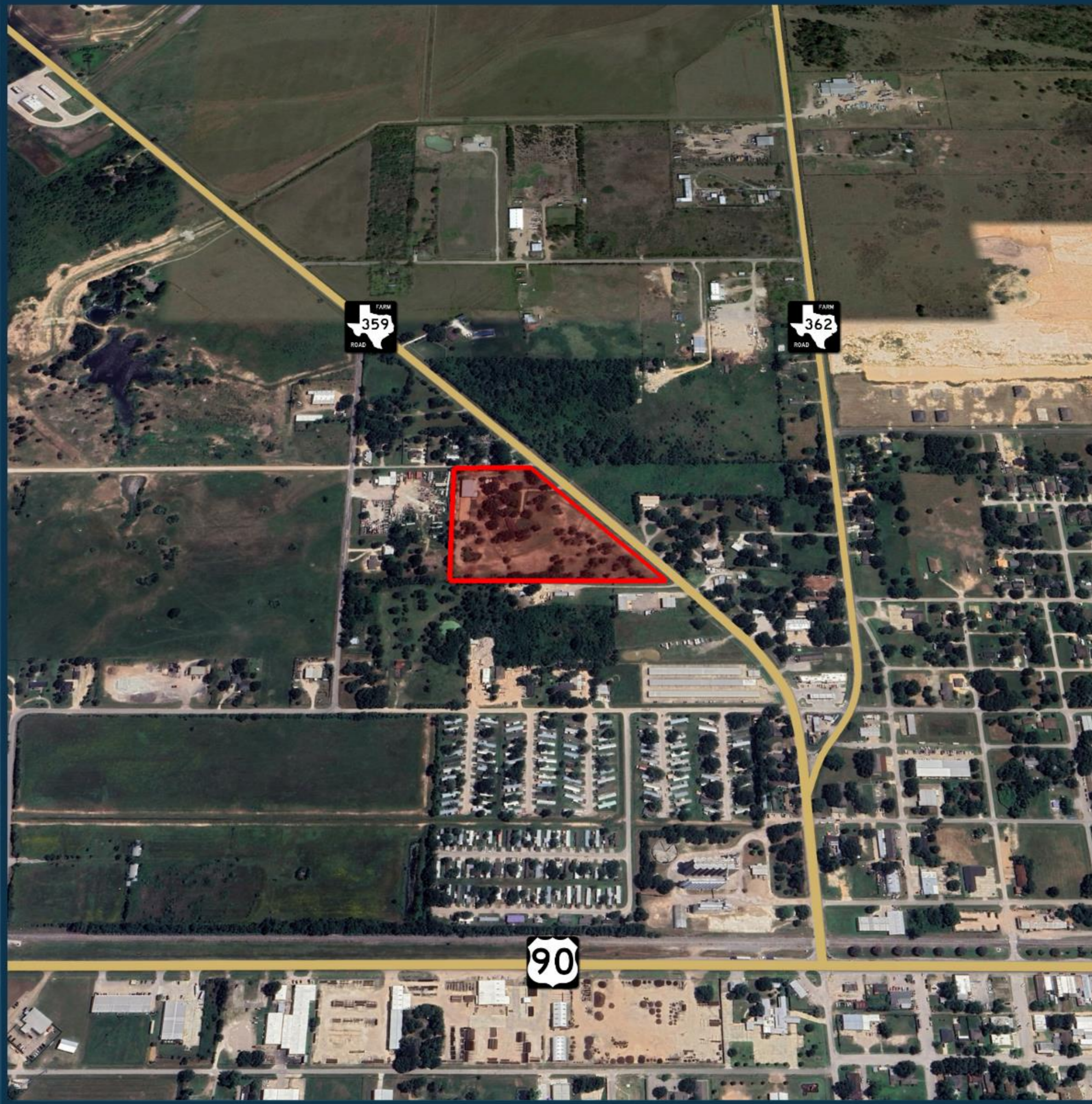
Senior Vice President ■ twilson@ballcre.com

(713) 819-1545

ballcre.com

1345 FM 359 Road

BROOKSHIRE, TEXAS



Acreage

± 10.25 Acres

Frontage

± 889 feet on FM 359

Location

Waller County

± 0.5 miles from Highway 90

± 0.7 miles from Interstate 10

± 1.9 miles from Royal High School

± 4.7 miles from Houston Executive Airport

Best Use

Commercial or residential development

Hunter M. Ball

Founder & Principal ■ hunter@ballcre.com

Tommy Wilson

Senior Vice President ■ twilson@ballcre.com

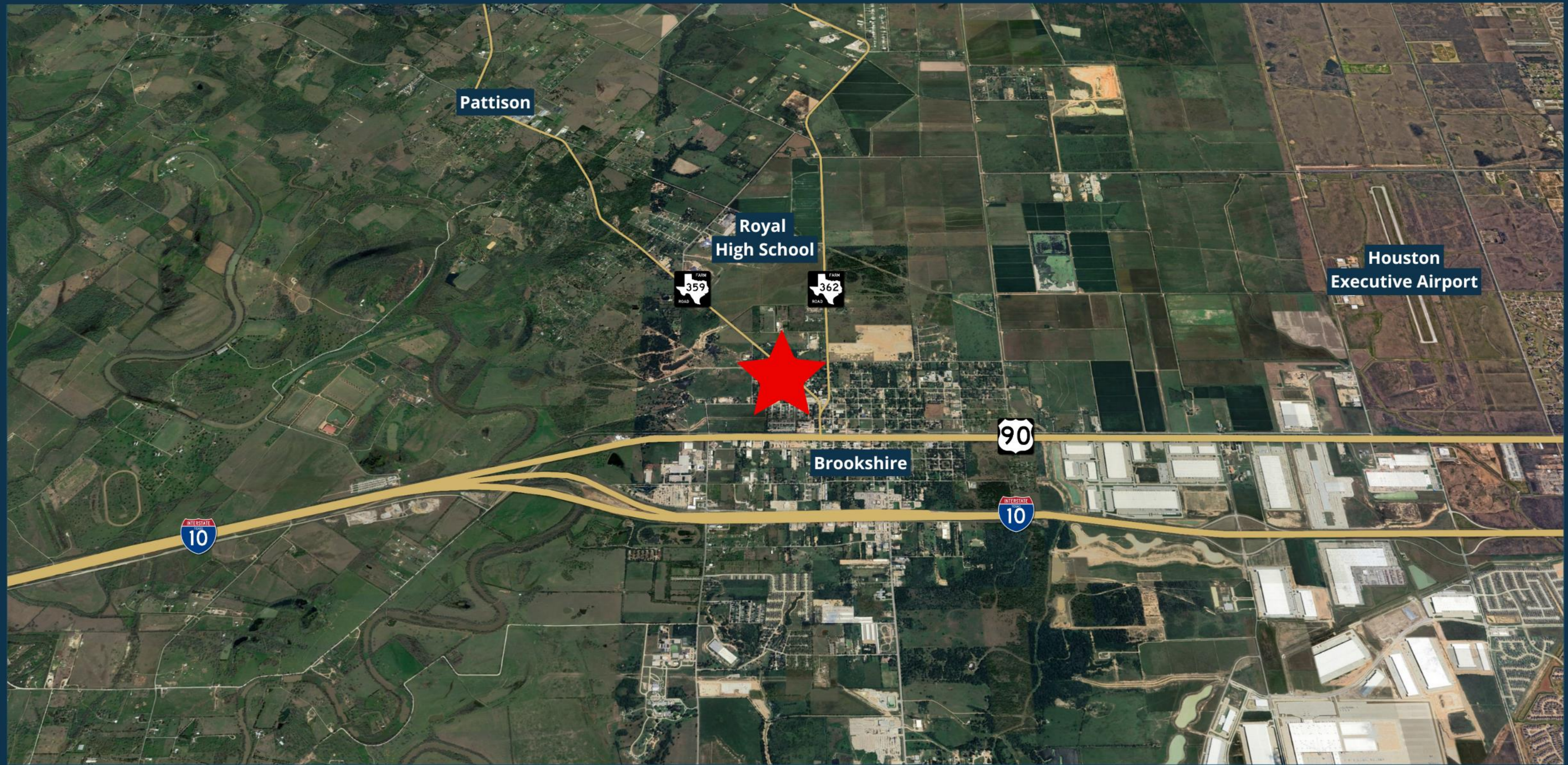
(713) 819-1545

ballcre.com

1345 FM 359 Road

BROOKSHIRE, TEXAS

BC
BALL COMMERCIAL
— REAL ESTATE —



Hunter M. Ball
Founder & Principal ■ hunter@ballcre.com

Tommy Wilson
Senior Vice President ■ twilson@ballcre.com

(713) 819-1545
ballcre.com