

6368 ARIZONA CIRCLE

Los Angeles, CA 90045



6368 ARIZONA CIRCLE
VIRTUAL TOUR

±7,000 SF Class A
Creative Office For Lease





THE OFFERING

Lee & Associates is pleased to present the opportunity to lease an approximately 7,000 SF creative office located at 6368 Arizona Circle in Los Angeles, CA. The opportunity for a tenant to occupy the entirety of the space. Ideally located between Playa Vista, Culver City, and El Segundo/LAX, this high-image property is in excellent “turnkey” condition with natural light, operable windows, covered outdoor seating areas and private restrooms.

The Premises can be leased along with the adjacent building at 6374 Arizona Circle (8,100 SF) for a combined 15,100 SF.

[Click for 6374 Arizona Circle Brochure](#)



PREMISES ± 7,000 SF Building
± 13,950 SF Land

LEASE RATE \$2.95 MG

PARKING 15 Total Parking Spaces (\$150/Space/Month)

ZONING LAM1

FEATURES

- Fully Remodeled Creative Office
- Single Tenant Building
- Modern Amenities
- Adjacent to Silicon Beach
- Minutes from Amenities at Westfield Mall & the Runway

CONTACT

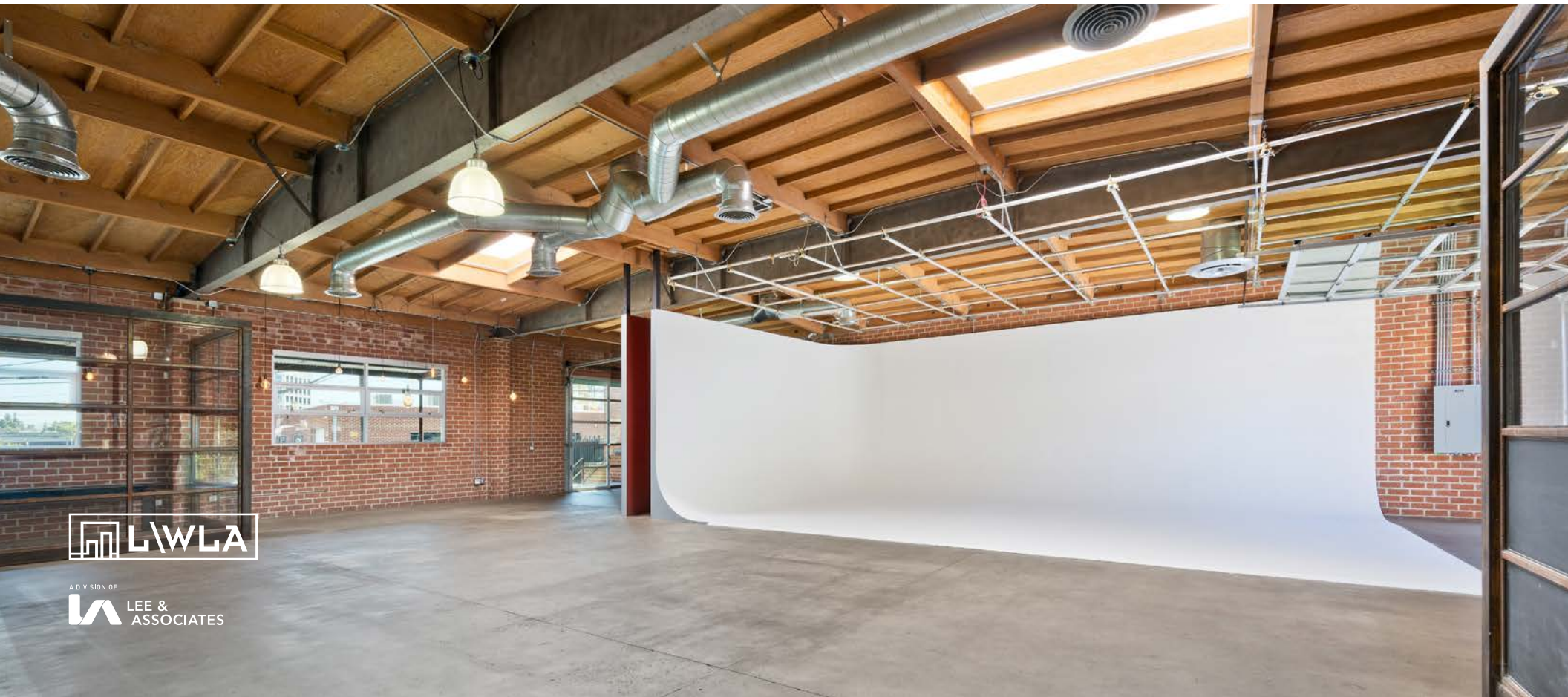
Brad McCoy 310.899.2730 bmccoy@leewestla.com BKR DRE 01938098	David Wilson 310.899.2707 dwilsoon@leewestla.com AGT DRE 00822760
Keith Fielding 310.899.2719 kfielding@leewestla.com AGT DRE 01729915	Dylan Mahood 310.899.2706 dmahood@leewestla.com AGT DRE 02027002
George Wilson 310.899.2738 gwilson@leewestla.com AGT DRE 02090678	Conor Halloran 310.899.2724 challoran@leewestla.com AGT DRE 02085970



1508 17th Street, Santa Monica, CA | 310.899.2700
WWW.LEEWESTLA.COM | DRE 01222000

No warranty or representation is made to the accuracy of the foregoing information.
Terms of sale or lease are subject to change or withdrawal without notice.

INTERIOR PHOTOS



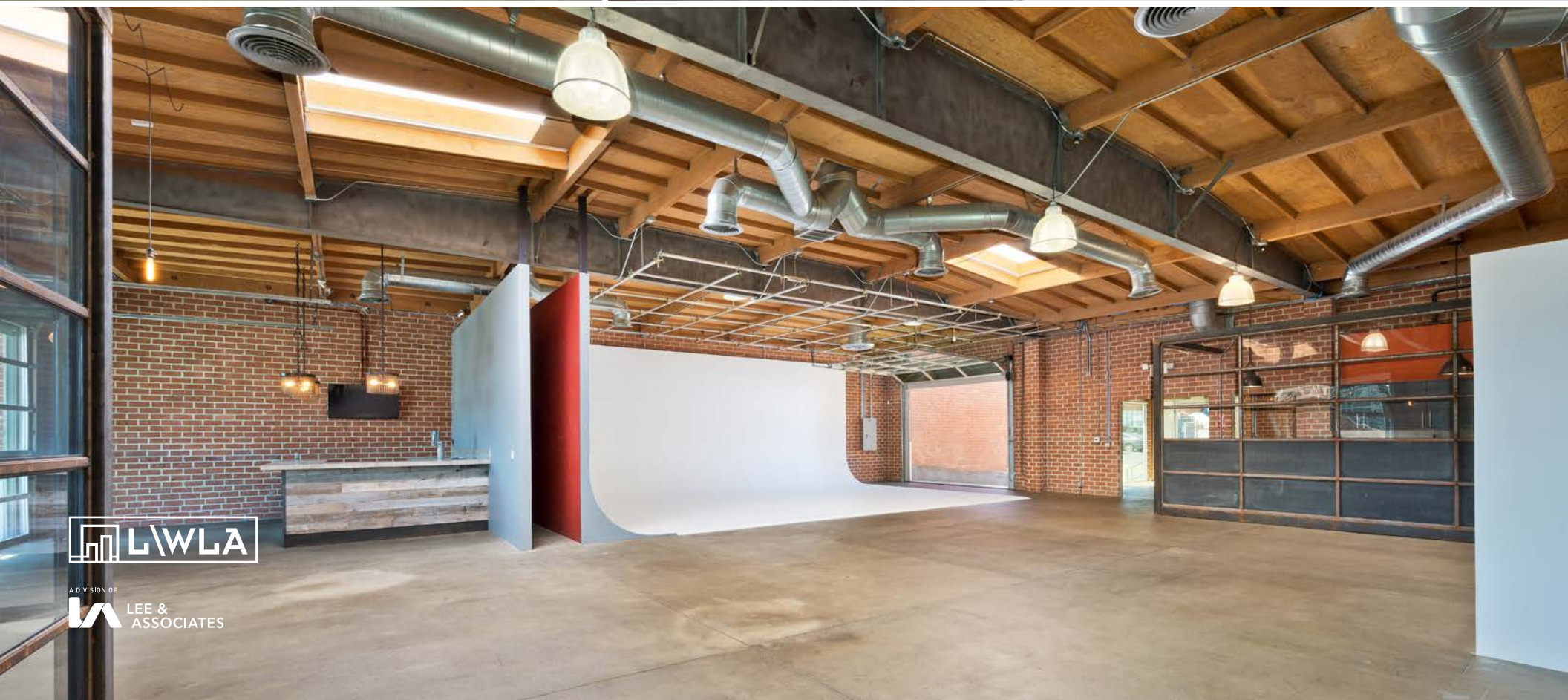
INTERIOR PHOTOS



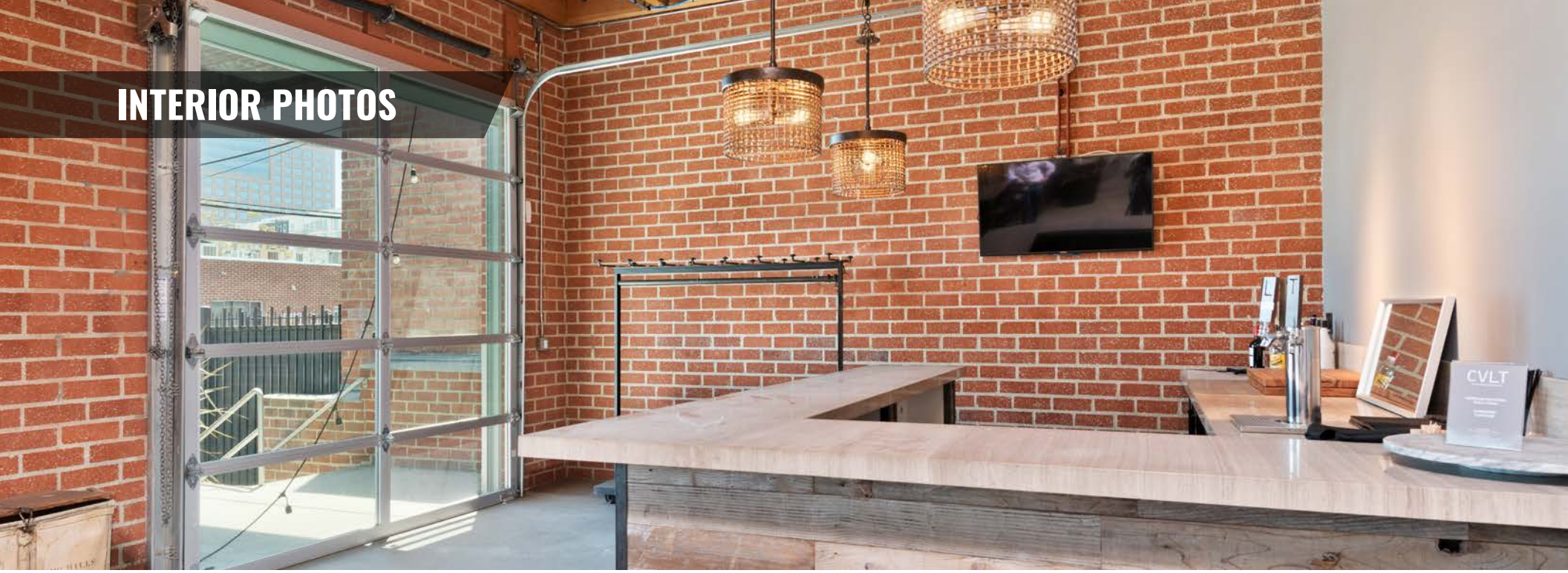
LWLA

A DIVISION OF
LEE & ASSOCIATES

INTERIOR PHOTOS



INTERIOR PHOTOS



A DIVISION OF
LEE & ASSOCIATES

EXTERIOR PHOTOS



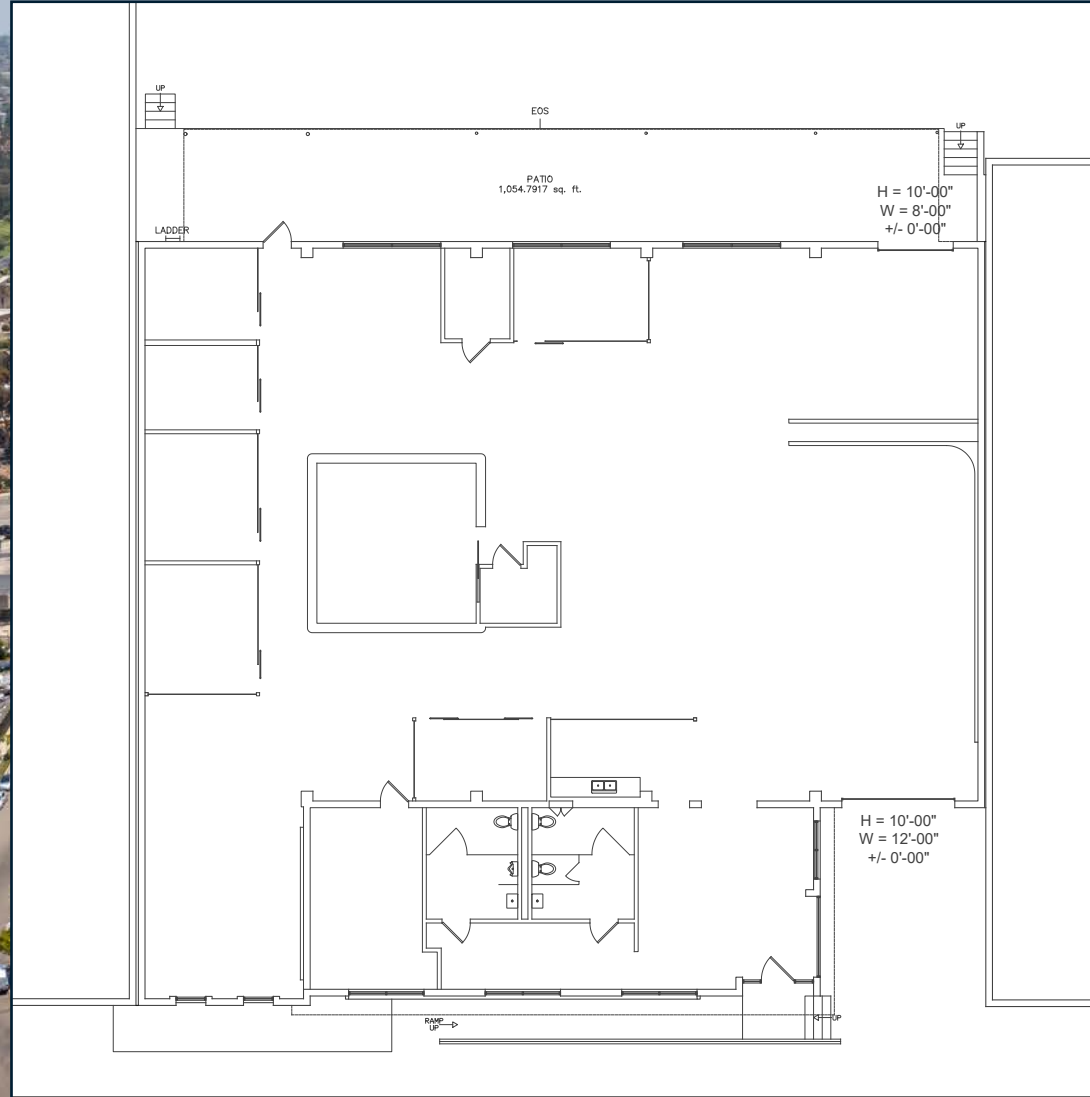
A DIVISION OF
LEE & ASSOCIATES

EXTERIOR PHOTOS



A DIVISION OF
LEE & ASSOCIATES

FLOOR PLAN



A DIVISION OF
LEE & ASSOCIATES

BIRDS EYE OVERVIEW



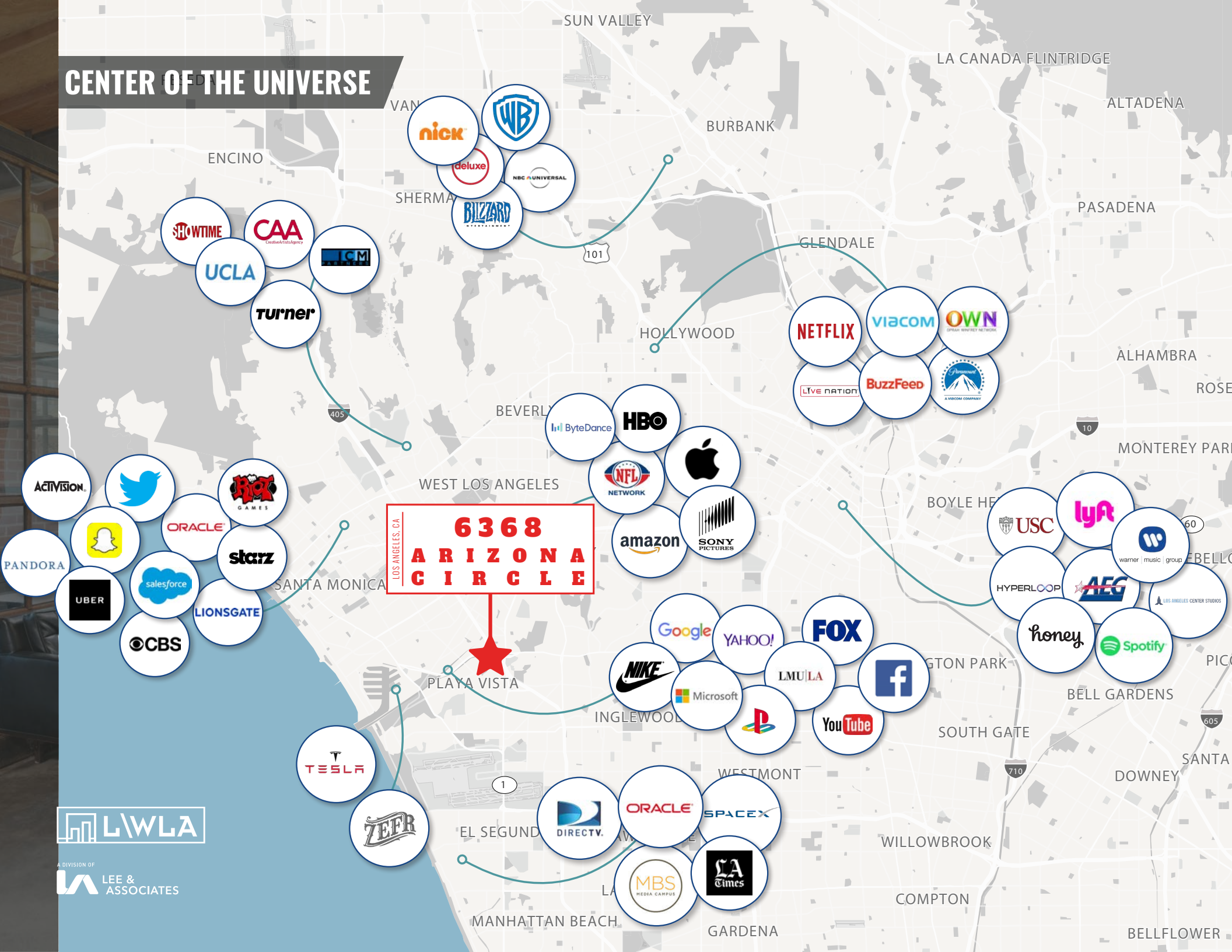
NOTABLE NEIGHBORS



LOS ANGELES, CA
6368
ARIZONA
CIRCLE



CENTER OF THE UNIVERSE



LWLA

A DIVISION OF
LEE & ASSOCIATES



A DIVISION OF



**LEE &
ASSOCIATES**

Brad McCoy

310.899.2730

bmccoy@leewestla.com

BKR DRE 01938098

Dylan Mahood

310.899.2706

dmahood@leewestla.com

AGT DRE 02027002

David Wilson

310.899.2707

dwilsoon@leewestla.com

AGT DRE 00822760

George Wilson

310.899.2738

gwilson@leewestla.com

AGT DRE 02090678

Keith Fielding

310.899.2719

kfielding@leewestla.com

AGT DRE 01729915

Conor Halloran

310.899.2724

challoran@leewestla.com

AGT DRE 02085970

© 2021 Lee & Associates Los Angeles West, Inc. All rights reserved. This information has been obtained from sources believed reliable, but has not been verified for accuracy or completeness. You should conduct a careful, independent investigation of the property and verify all information. Any reliance on this information is solely at your own risk. Lee & Associates and the Lee & Associates logo are service marks of Lee & Associates Los Angeles West, Inc. All other marks displayed on this document are the property of their respective owners, and the use of such logos does not imply any affiliation with or endorsement of Lee & Associates. Photos herein are the property of their respective owners. Use of these images without the express written consent of the owner is prohibited.