



1394 Courtright Rd

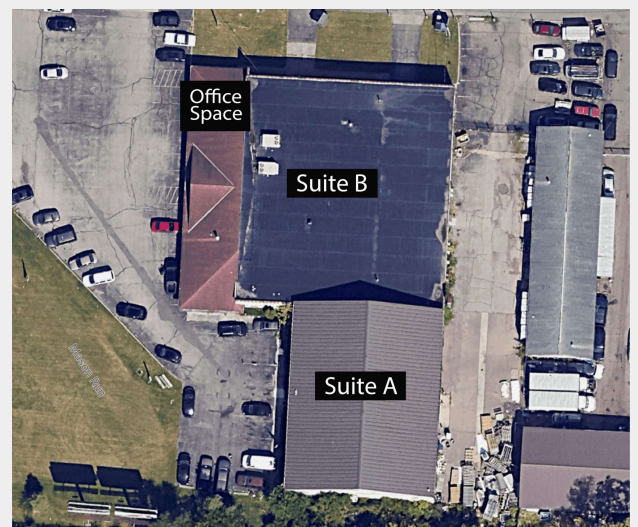
Columbus, Ohio 43227

Property Features

- 7,000 - 24,680 SF Available
- Optional 6,400 SF of Education or Office Space in Front
- Ceiling Heights up to 32'
- 12' Drive-in Doors
- Floor Drains
- Flow Through Design with Drive-in Doors on Each End of Building
- Partial Fenced & Gated Yard Totaling 3.1 Acres
- 55 Parking Spaces
- Zoned M
- Available Q1 2025

Lease Rate: \$9.50 - 13.75 SF/Yr (MG)

www.myfuturewarehouse.com



For more information:

Dan Sheeran, Jr.

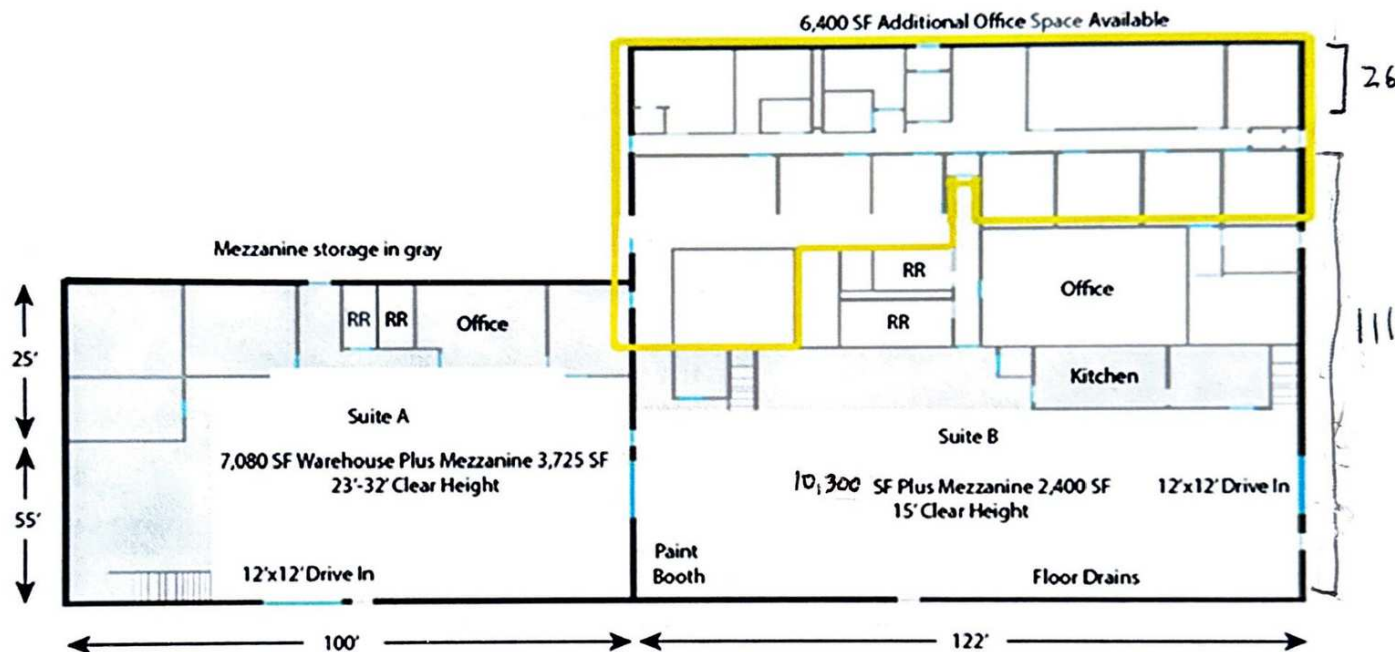
614 629 5228 • djsheeran@ohioequities.com

Mike Semon

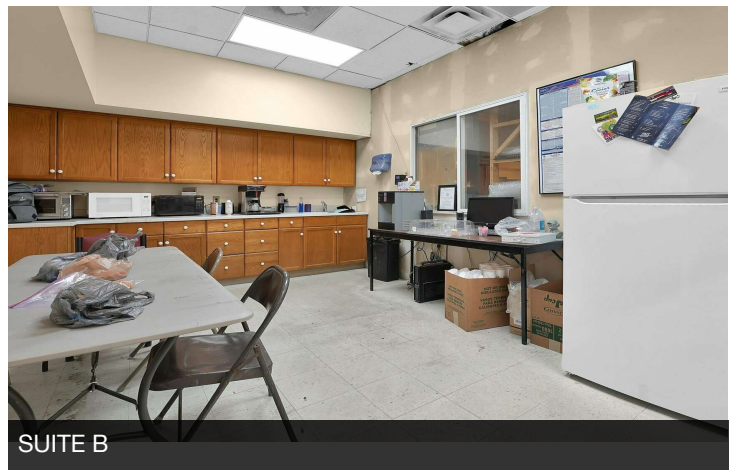
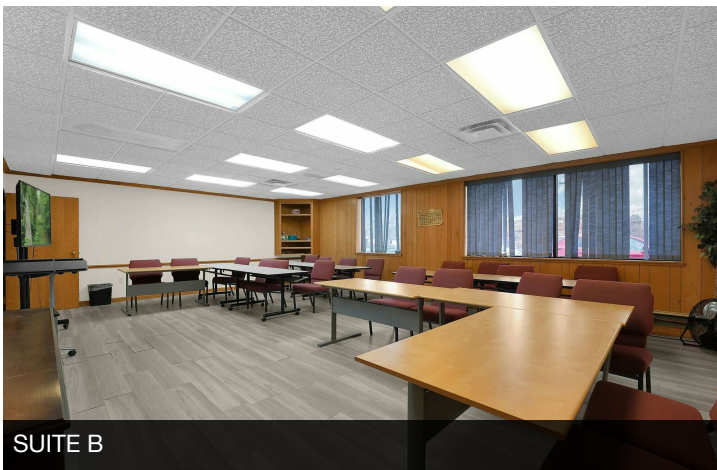
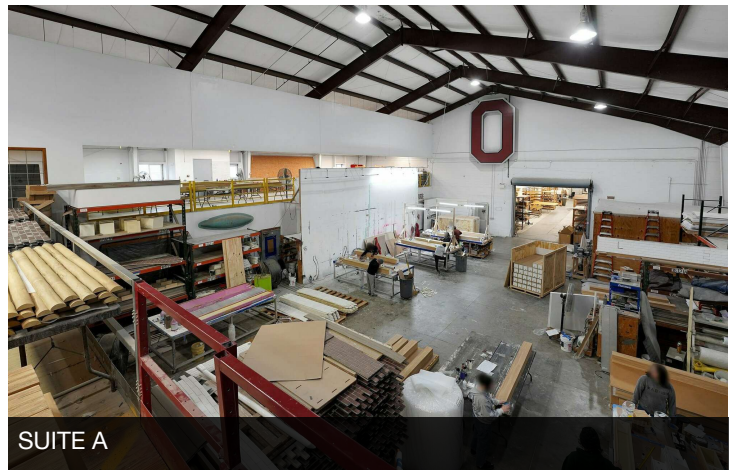
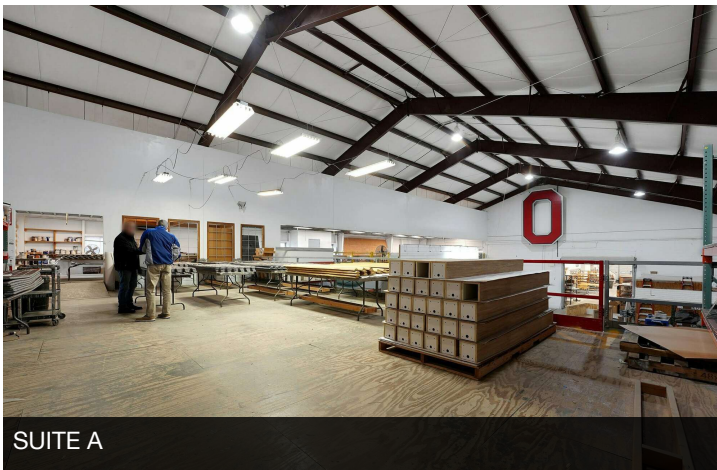
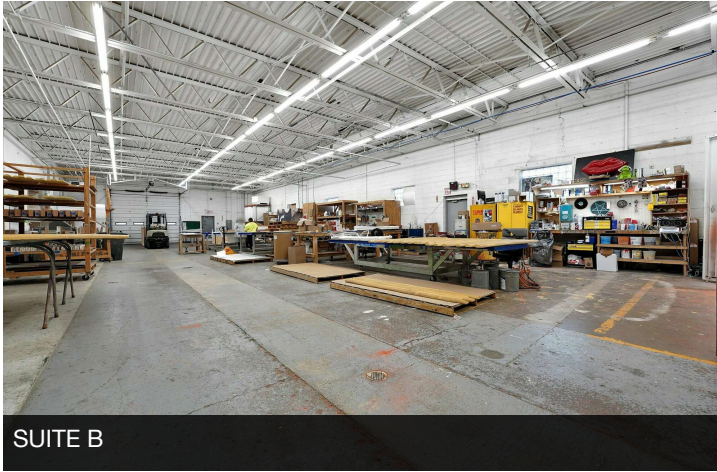
614 629 5217 • msemon@ohioequities.com

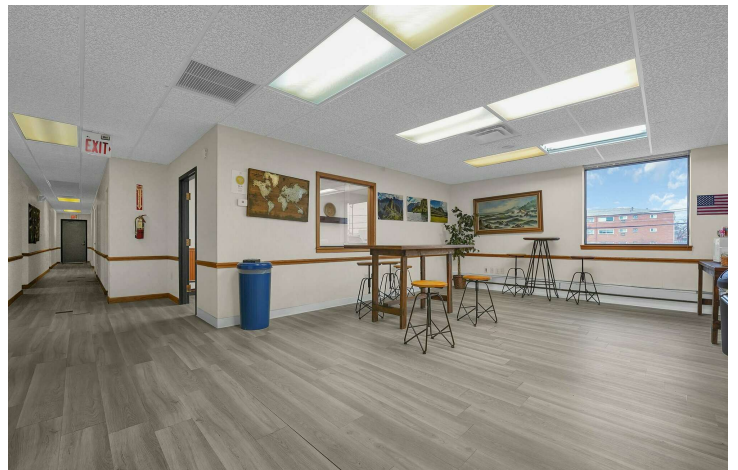
Dan Sheeran

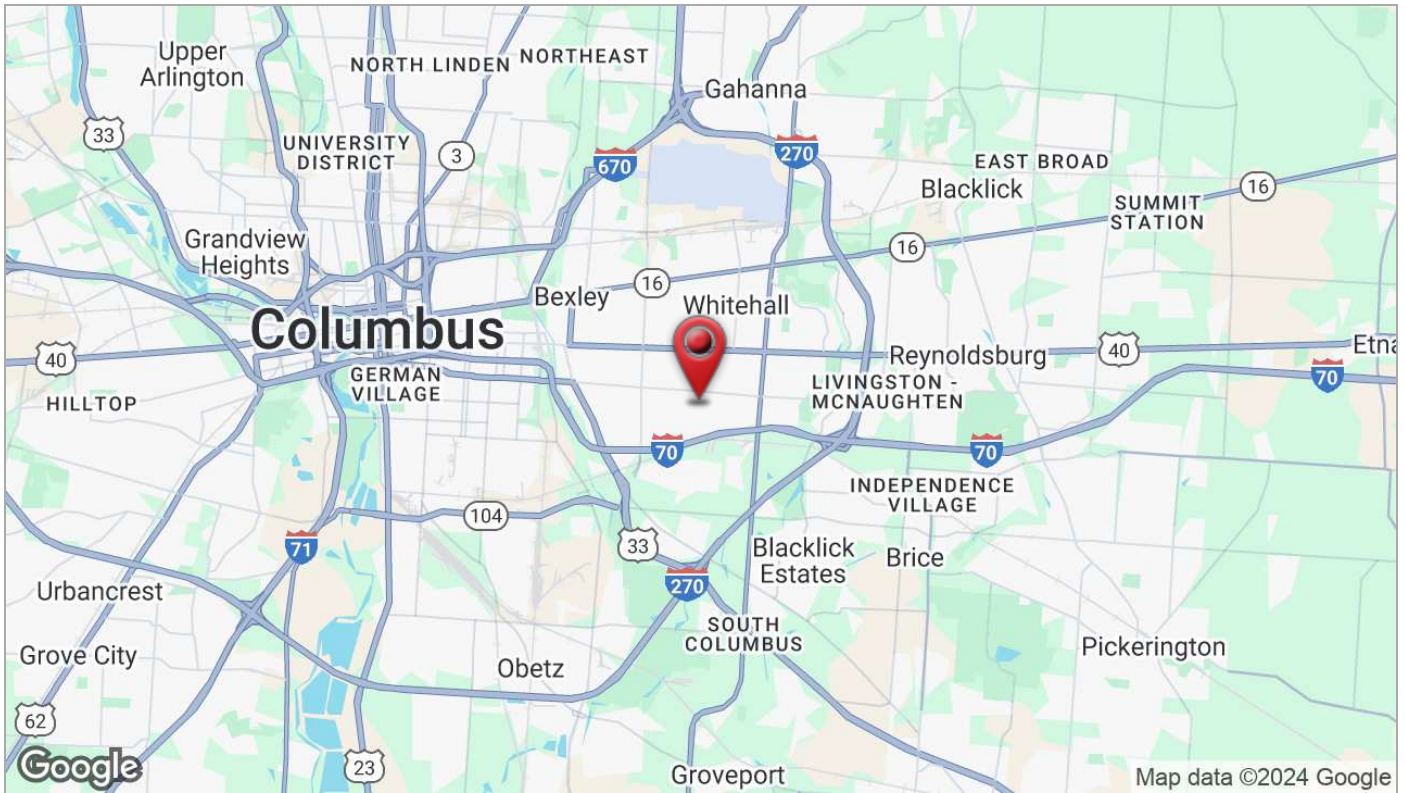
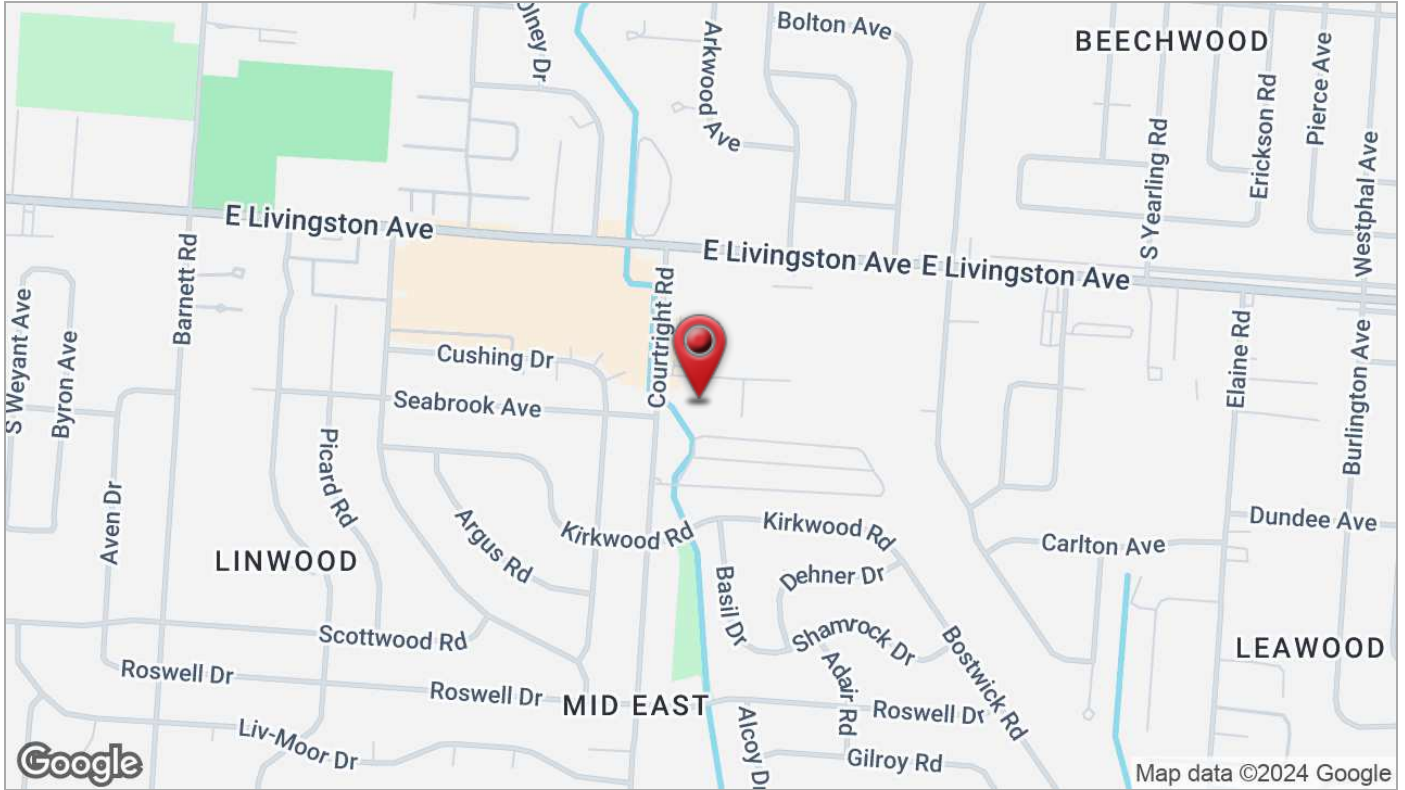
614 629 5216 • dsheeran@ohioequities.com

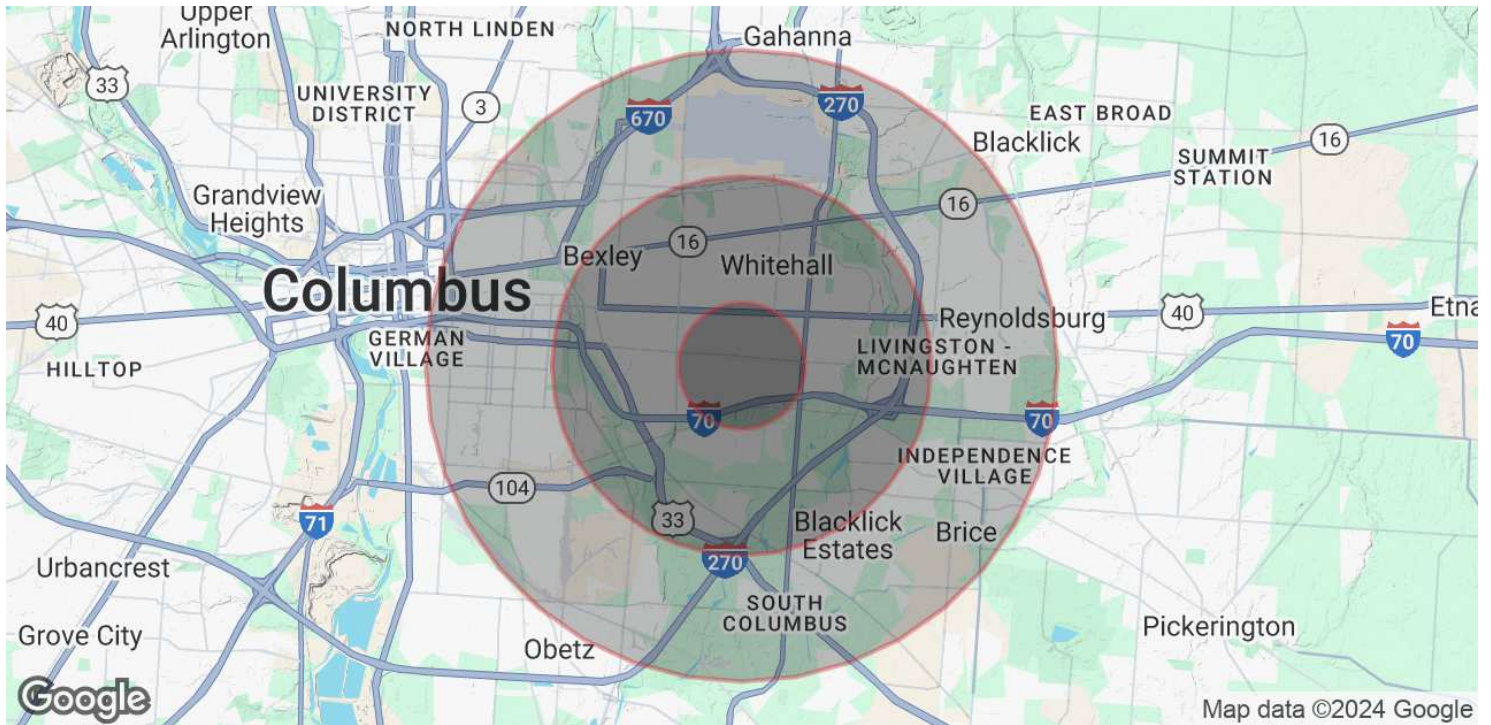


SPACE	SUITE #	SPACE USE	LEASE RATE	LEASE TYPE	SIZE (SF)	AVAILABILITY
1394 Courtright Rd	Suite A	Flex Space	\$9.50 - 13.75 SF/YR	Modified Gross	7,080 SF	Q1 2025
1394 Courtright Rd	Suite B	Flex Space	\$9.50 - 13.75 SF/YR	Modified Gross	10,300 SF	Q1 2025
1394 Courtright Rd	Office Space	Flex Space	\$9.50 - 13.75 SF/YR	Modified Gross	6,400 SF	Q1 2025









POPULATION

	1 MILE	3 MILES	5 MILES
Total Population	16,641	112,840	255,539
Average Age	38	38	38
Average Age (Male)	37	37	37
Average Age (Female)	39	39	39

HOUSEHOLDS & INCOME

	1 MILE	3 MILES	5 MILES
Total Households	6,643	46,368	106,268
# of Persons per HH	2.5	2.4	2.4
Average HH Income	\$56,256	\$72,411	\$73,457
Average House Value	\$159,322	\$245,497	\$254,450

Demographics data derived from AlphaMap