

## Corporate Campus in Westshore's Eisenhower Corridor

- Sunforest Corporate Campus offers a lush oak-canopied environment and includes on-site day care, outdoor seating areas and multi-family residential options
- Suites from 3,866 - 24,510 RSF available
- 5.00/1,000 parking
- Building and monument signage opportunities
- Convenient access and visibility from both Veterans Expressway and Hillsborough Avenue
- Ease of commute from growing residential neighborhoods in Pasco County
- Minutes from Tampa International Airport
- Long-term, stable Ownership
- **NEW tenant lounge now open at Sunforest I - game tables, casual seating, complimentary coffee & snacks**



## Get more information

### Clay Witherspoon

Managing Director | Principal  
+1 813 444 0626  
clay.witherspoon@avisonyoung.com

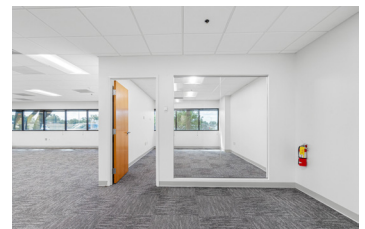
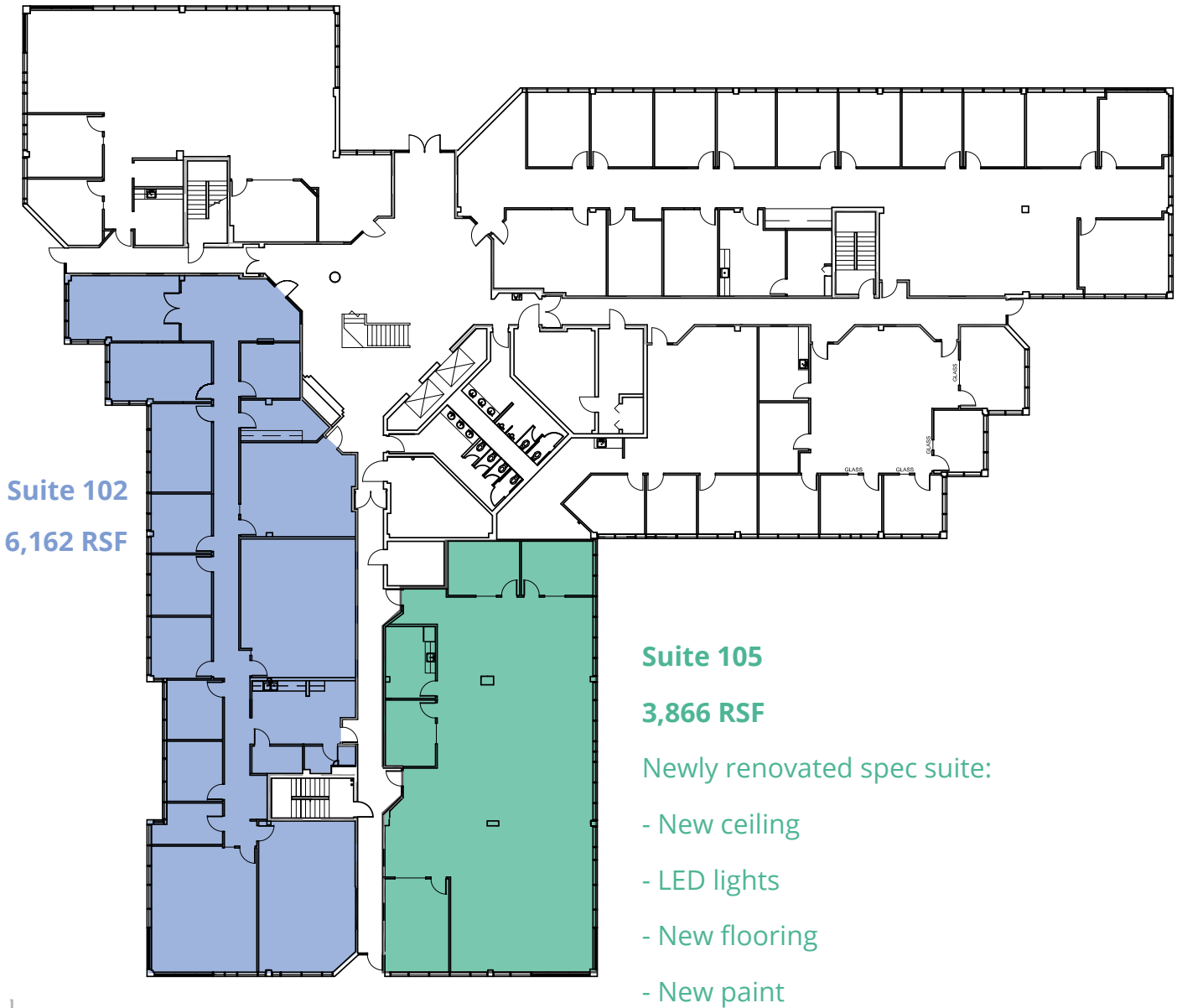
### Laurie Hynes

Sr. Client Services Coordinator  
+1 813 444 0621  
laurie.hynes@avisonyoung.com

avisonyoung.com

# 1st Floor

Sunforest II  
5110 Sunforest Drive  
Tampa, FL 33634



**Get more  
information**

**Clay Witherspoon**  
Managing Director | Principal  
+1 813 444 0626

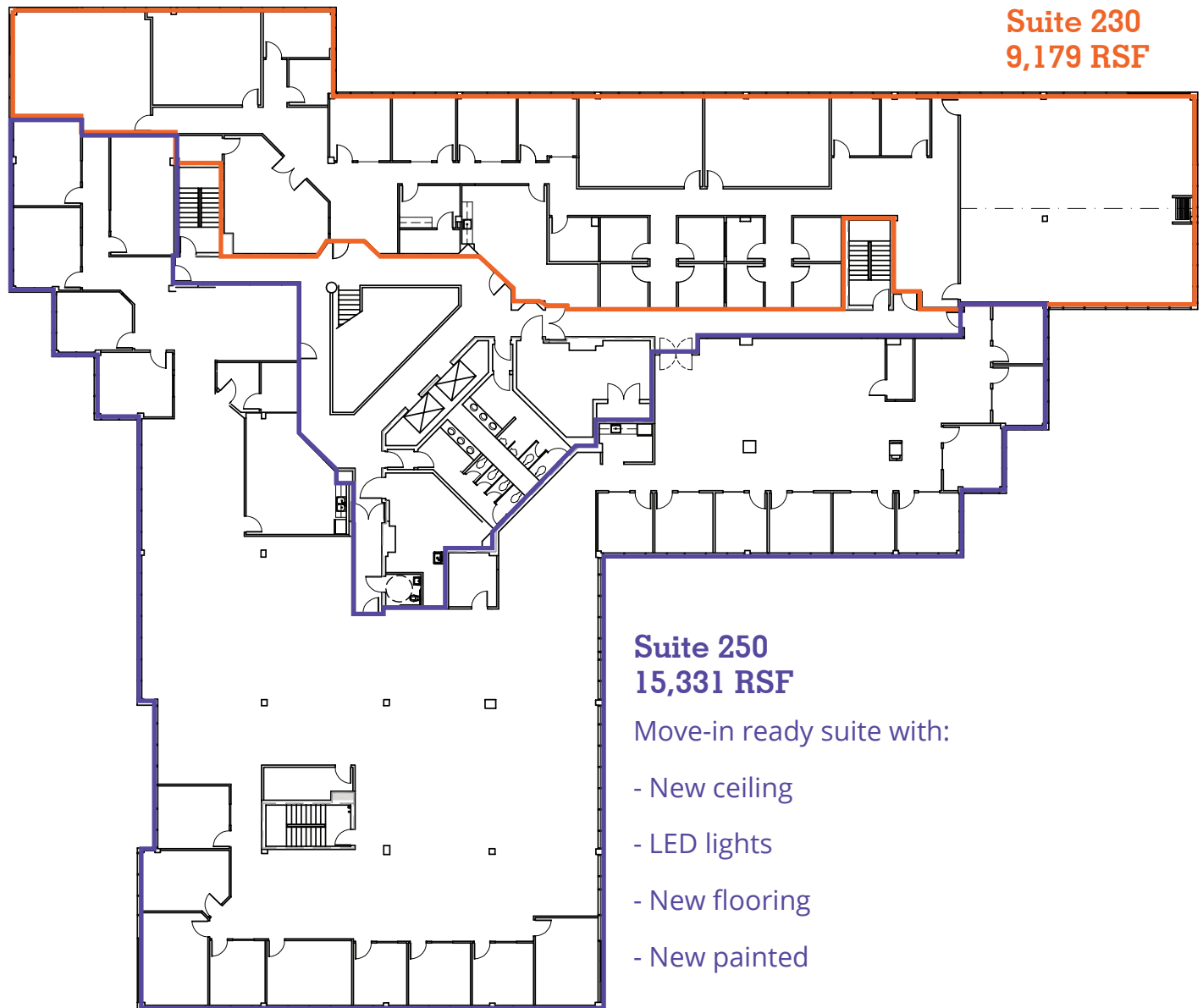
**Laurie Hynes**  
Sr. Client Services Coordinator  
+1 813 444 0621

**AVISON  
YOUNG**

# 2nd Floor Full Floor - 24,510 sf

will demise

Sunforest II  
5110 Sunforest Drive  
Tampa, FL 33634

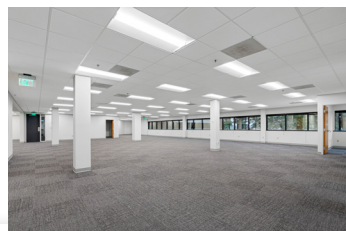


**Suite 230**  
**9,179 RSF**

**Suite 250**  
**15,331 RSF**

Move-in ready suite with:

- New ceiling
- LED lights
- New flooring
- New painted



**Get more  
information**

**Clay Witherspoon**  
Managing Director | Principal  
+1 813 444 0626

**Laurie Hynes**  
Sr. Client Services Coordinator  
+1 813 444 0621

**AVISON  
YOUNG**



# Location Map

Sunforest II  
5110 Sunforest Drive  
Tampa, FL 33634



**Get more  
information**

**Clay Witherspoon**  
Managing Director | Principal  
+1 813 444 0626

**Laurie Hynes**  
Sr. Client Services Coordinator  
+1 813 444 0621

**AVISON  
YOUNG**