

FOR LEASE

1907 62ND AVE E

FIFE, WA 98424

*1,517 SF Residential-Office Conversion
Available in Fife, WA*

Listing Price

\$2,250

MONTHLY + NNN

\$750

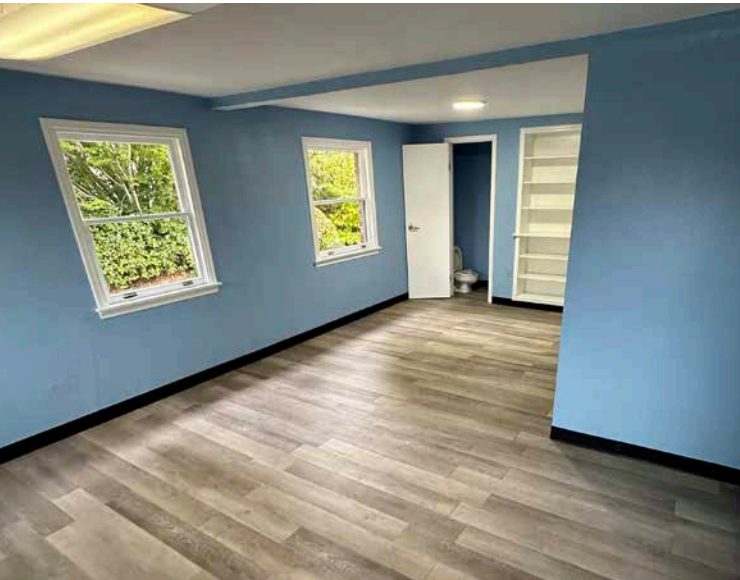
NNN, MONTHLY



PROPERTY PHOTOS

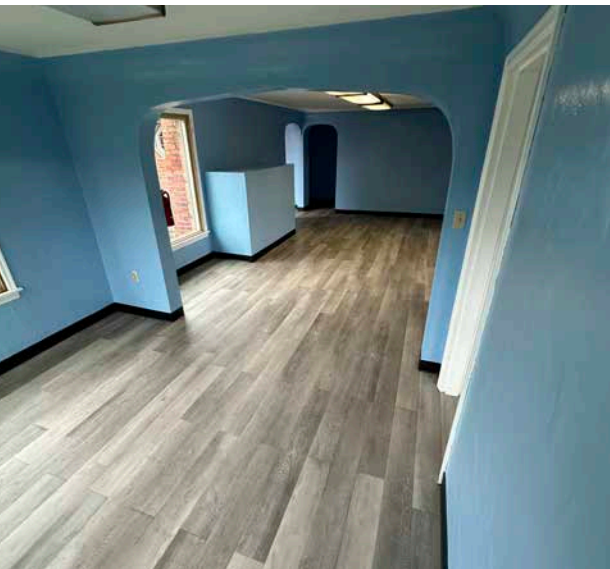
km Kidder
Mathews

FOR LEASE



PROPERTY HIGHLIGHTS

LAND AC	.322 AC
OFFICE SF	1,517 SF
FEATURES	<ul style="list-style-type: none">• Mostly open concept• Huge backyard area• Fully fenced and secured• Mini-split HVAC system
ZONING	Community Mixed Use
ZONING MUNICIPALITY	City of Fife
	→ ZONING MAP → ZONING TABLE



\$2,250
MONTHLY + NNN

\$750
NNN, MONTHLY

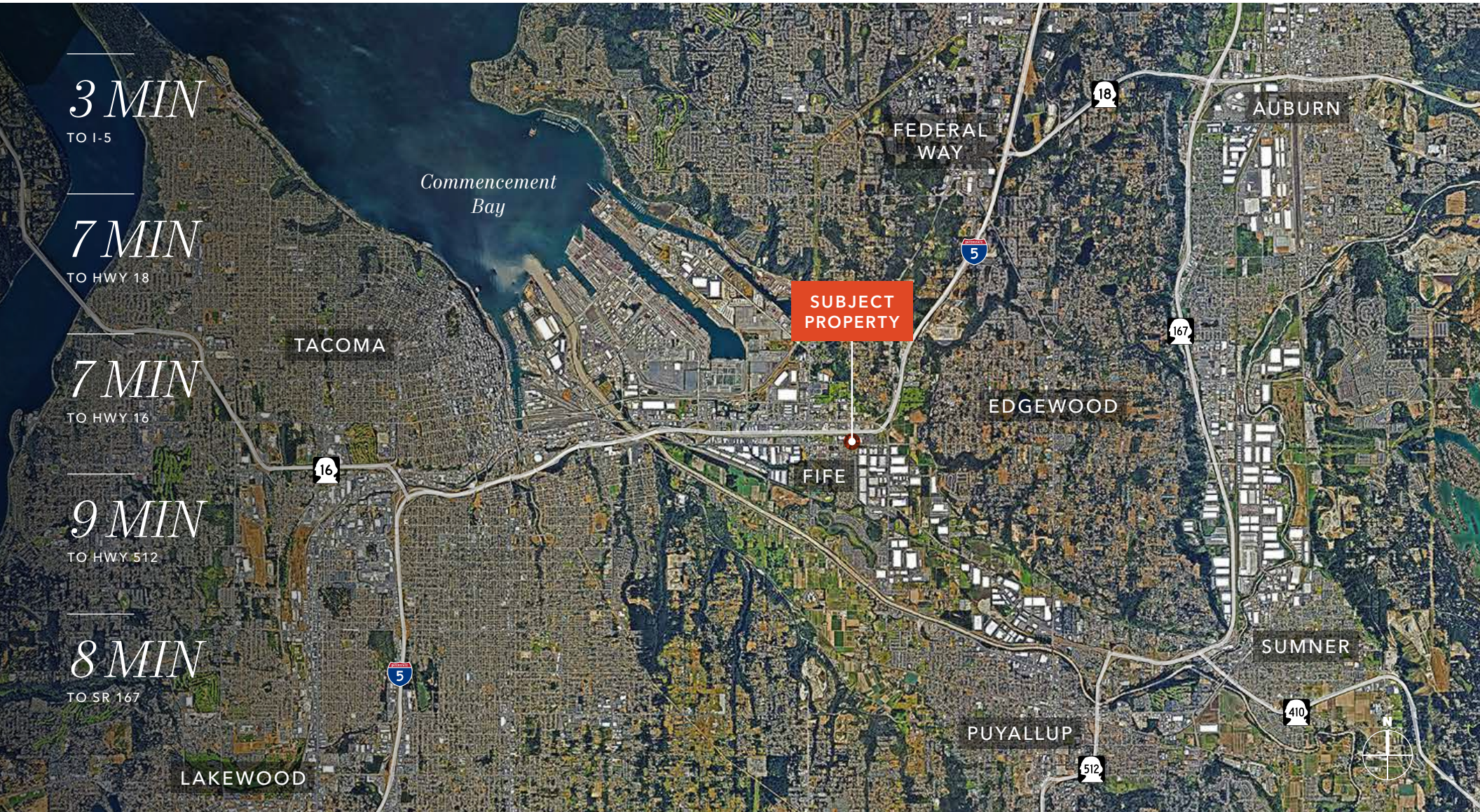
MATT MCLENNAN, SIOR, CCIM
Executive Vice President
253.722.1458
matt.mclennan@kidder.com

KIDDER.COM

This information supplied herein is from sources we deem reliable. It is provided without any representation, warranty, or guarantee, expressed or implied as to its accuracy. Prospective Buyer or Tenant should conduct an independent investigation and verification of all matters deemed to be material, including, but not limited to, statements of income and expenses. Consult your attorney, accountant, or other professional advisor. All Kidder Mathews designs are the sole property of Kidder Mathews. Branded materials and layouts are not authorized for use by any other firm or person.



FOR LEASE



3 MIN

TO I-5

7 MIN

TO HWY 18

7 MIN

TO HWY 16

9 MIN

TO HWY 512

8 MIN

TO SR 167

KIDDER.COM

This information supplied herein is from sources we deem reliable. It is provided without any representation, warranty, or guarantee, expressed or implied as to its accuracy. Prospective Buyer or Tenant should conduct an independent investigation and verification of all matters deemed to be material, including, but not limited to, statements of income and expenses. Consult your attorney, accountant, or other professional advisor. All Kidder Mathews designs are the sole property of Kidder Mathews. Branded materials and layouts are not authorized for use by any other firm or person.

