

SALE

2900 S Main St - Searcy

2900 S MAIN ST

Searcy, AR 72143

PRESENTED BY:

NATHAN HUTCHINS

O: 501.912.3660

nathan.hutchins@svn.com

AR #PB00063530



PROPERTY SUMMARY



360° VIRTUAL TOUR

OFFERING SUMMARY

SALE PRICE:	\$850,000
LOT SIZE:	1.7 Acres
BUILDING SIZE:	6,726 SF

NATHAN HUTCHINS

O: 501.912.3660
nathan.hutchins@svn.com
AR #PB00063530

PROPERTY DESCRIPTION

Introducing a prime investment opportunity in Searcy, AR; a well-appointed 6,726 SF office building, constructed in 2001. Boasting modern facilities and an efficient layout, this property is perfectly suited for a range of office uses. With ample space for operations and a strategic location, just minutes from key thoroughfares, it offers the ideal setting for a thriving business.

PROPERTY HIGHLIGHTS

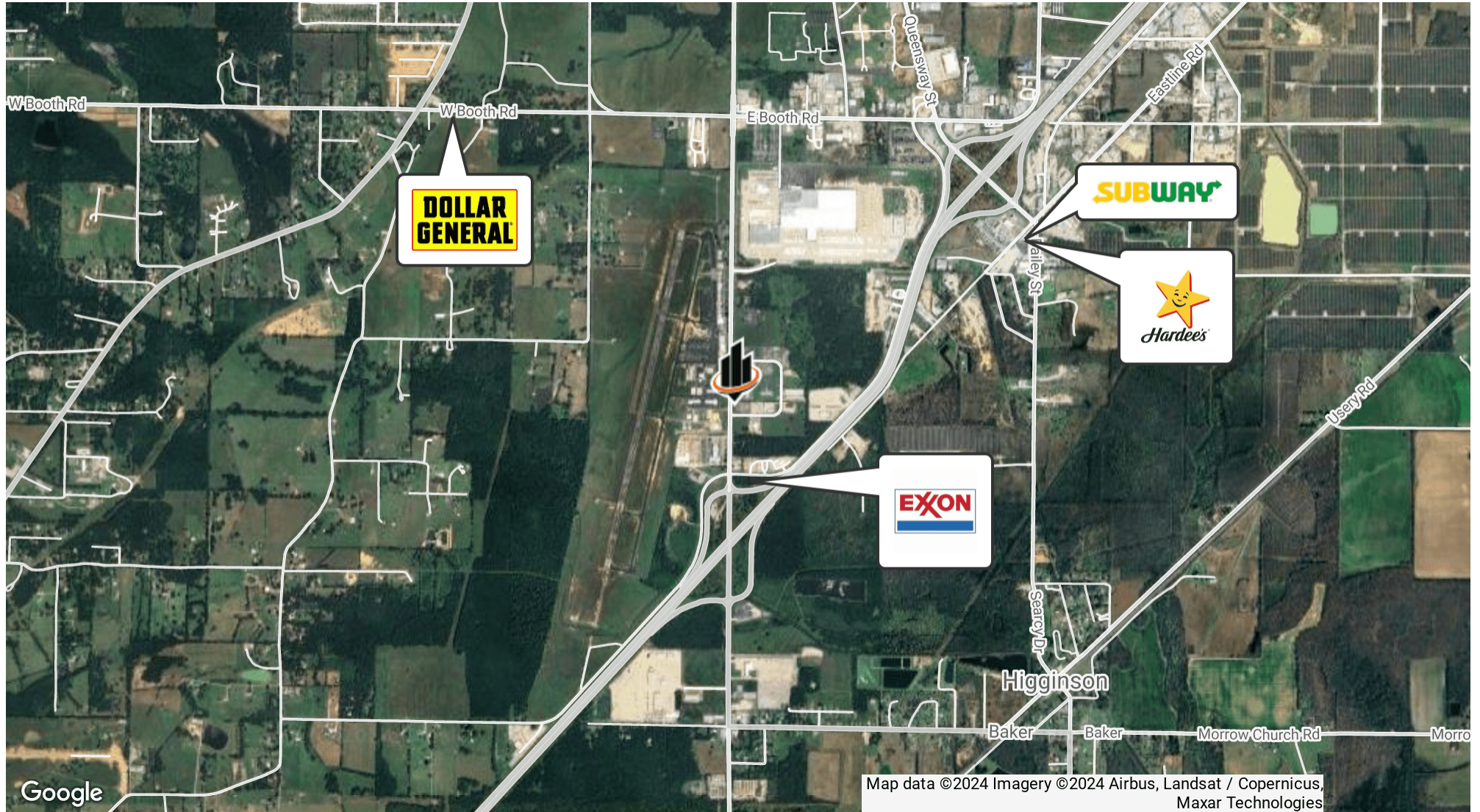
- Spacious 6,726 SF office building
- Versatile layout for various office uses
- Well-maintained exterior with professional curb appeal
- Substantial parking
- Ample space for business operations
- Convenient proximity to major thoroughfares

ADDITIONAL PHOTOS



NATHAN HUTCHINS
O: 501.912.3660
nathan.hutchins@svn.com
AR #PB00063530

LOCATION MAP



NATHAN HUTCHINS

O: 501.912.3660

nathan.hutchins@svn.com

AR #PB00063530