

3 Sonny Perdue Drive

Garden City, GA

Heavy Industrial Outdoor Storage Yard



AVAILABLE FOR SUBLEASE

CONTACT

Zachary Zakas
Elmwood & Co.
912.417.0009
zac@elmwood.co
Real Broker, LLC
855.450.0442

Elmwood
& Co.

real



PROPERTY SUMMARY



Heavy Industrial Outdoor Storage Yard

3 Sonny Perdue Drive, Garden City, GA 31408

- ± 2.75 Acres (zoned **heavy industrial**)
- 94 (10' x 50') Trailer Parking Spaces
- Gravel with heavy duty concrete landing pads
- 8-foot chain link perimeter fencing with manual gate and concrete entry apron
- Full perimeter outdoor lighting
- Adjacent to 24-hour Love's Travel Stop #893 (private showers, Wi-Fi, laundry, CAT scales)
- Signalized intersection on Dean Forest Road (exit right toward Port of Savannah or left toward Interstate-16)
- ± 3.5 miles to GPA's Garden City Terminal
- **Available now**



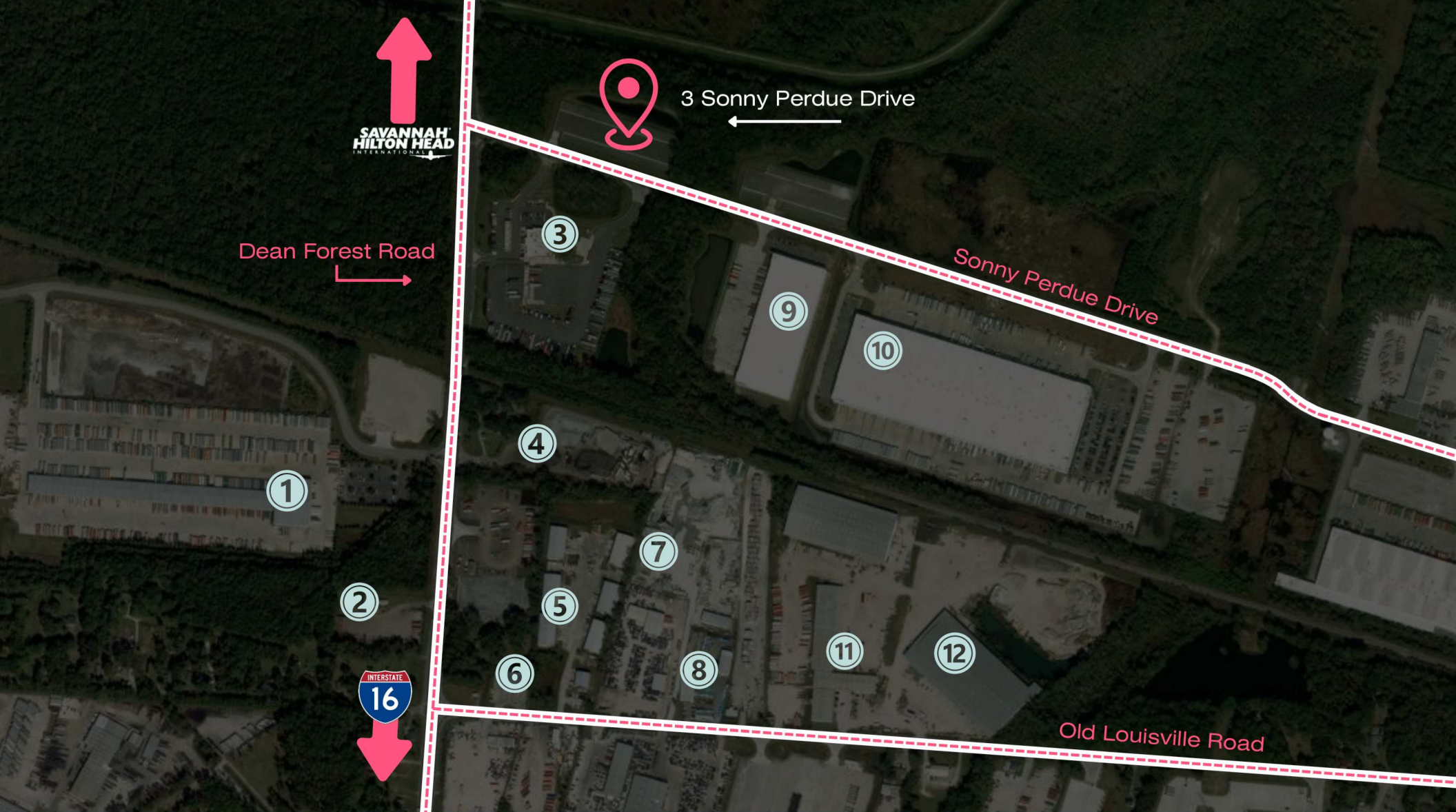
SAVANNAH
HILTON HEAD
INTERNATIONAL



Sonny Perdue Dr



3 Sonny Perdue Drive



LOCATION OVERVIEW

- | | | |
|--------------------------------------|--------------------------------------|--------------------------------|
| 1 National Retail Transportation | 5 Fishman Flooring Solutions | 9 SLM Group |
| 2 Lynxx Mobile Diesel Repair & Tires | 6 TruckPro | 10 Damco Distribution Services |
| 3 Love's Travel Stop | 7 SRM Concrete | 11 Portside Cargo |
| 4 CW Matthews | 8 Consolidated Pipe & Supply Co, Inc | 12 Worldwide Integrated Supply |

AERIAL MAP

Key Distances

Highway 21	2.6 Miles
Interstate 16	2.7 Miles
Garden City Terminal	3.5 Miles
Interstate 95	3.8 Miles
Savannah/HH Intl. Airport	5.4 Miles
Ocean Terminal	8.5 Miles





3 Sonny Perdue Drive

Garden City, GA

CONTACT

Zachary Zakas
Elmwood & Co.
912.417.0009
zac@elmwood.co

This information has been obtained from sources deemed reliable but has not been verified by Real Broker, LLC and is not guaranteed. All offerings are subject to errors, omissions, prior lease, or withdrawal without notice. No warranty or representation is made as to the accuracy of the information contained herein. All dimensions, square footages, and figures are approximate. Interested parties should conduct their own independent due diligence and consult appropriate professionals to verify all information.

**Elmwood
& Co.**

real

Real Broker, LLC
800 Battery Ave, Ste 100
Atlanta, GA 30339
gabroker@therealbrokerage.com
855.450.0442
onereal.com



Redefining
Commercial Real
Estate Brokerage

ELMWOOD & CO.

elmwood.co
