



**CUSHMAN &
WAKEFIELD**

Iowa Commercial Advisors



FOR LEASE

PRIME - CLASS A

MEDICAL | OFFICE | RETAIL SPACE

3,077 SF | \$32.00/SF NNN

**1411 DOUGLAS PKWY
URBANDALE, IA 50323**

BRANDON FITZ
Senior Associate
+1 319 400 0202
bfitz@iowaca.com

JORDAN BOUSLOG
Senior Associate
+1 515 402 9131
jbouslog@iowaca.com

MARK E. TIMMINS, J.D.
Senior Associate
+1 515 988 2765
mtimmings@iowaca.com

IDEAL FOR:

- **Medical Offices:** Physicians, physical therapists, chiropractors, or other healthcare providers.
- **Specialty Retail:** High-end boutiques, health & wellness stores, or specialty retail operations looking to tap into the affluent local market.
- **Professional Offices:** Legal firms, financial advisors, real estate agencies, consulting firms, & other professional services seeking a prestigious & accessible location.



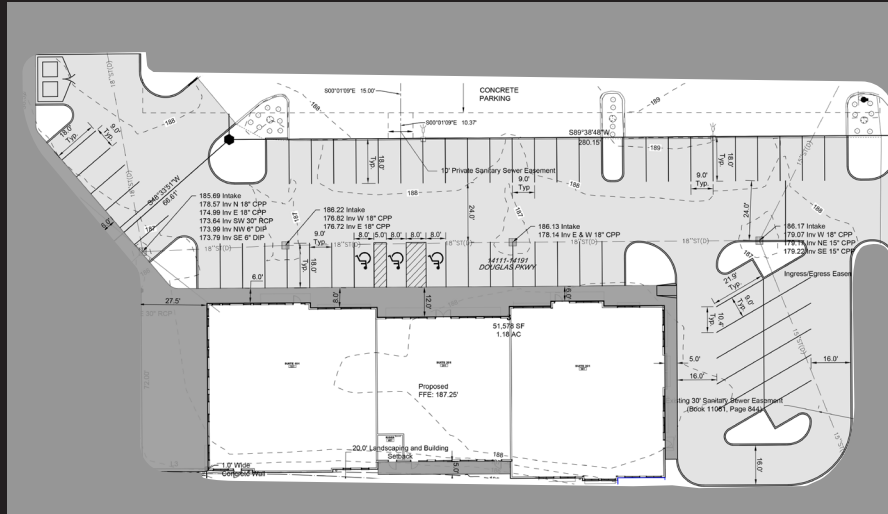
HIGHLIGHTS

- **Synergistic Neighbors:** Benefit from the complementary businesses nearby, including established dental and eye care practices and a reputable childcare facility, which can drive additional foot traffic.
- **Ample Parking:** Shared parking lot with Kiddie Academy ensures ample parking space for your clients, making visits convenient and hassle-free.
- **Modern Amenities:** The Class A building offers high-end finishes and modern amenities, providing a professional and welcoming environment for your clients.
- **Convenient Access:** Easy access to major roads and highways, making it convenient for patients and customers.



BUILDING STATS

Address	14111 Douglas Pkwy
City	Urbandale
State	Iowa
County	Polk
Zip	50322
Site Area (Acres)	1.18
Total Building Size (SF)	12,034
Cross Street	142nd Street
Zoning	C Commercial
Parking Spots	62
Number of Floors	1
Year Built	2024

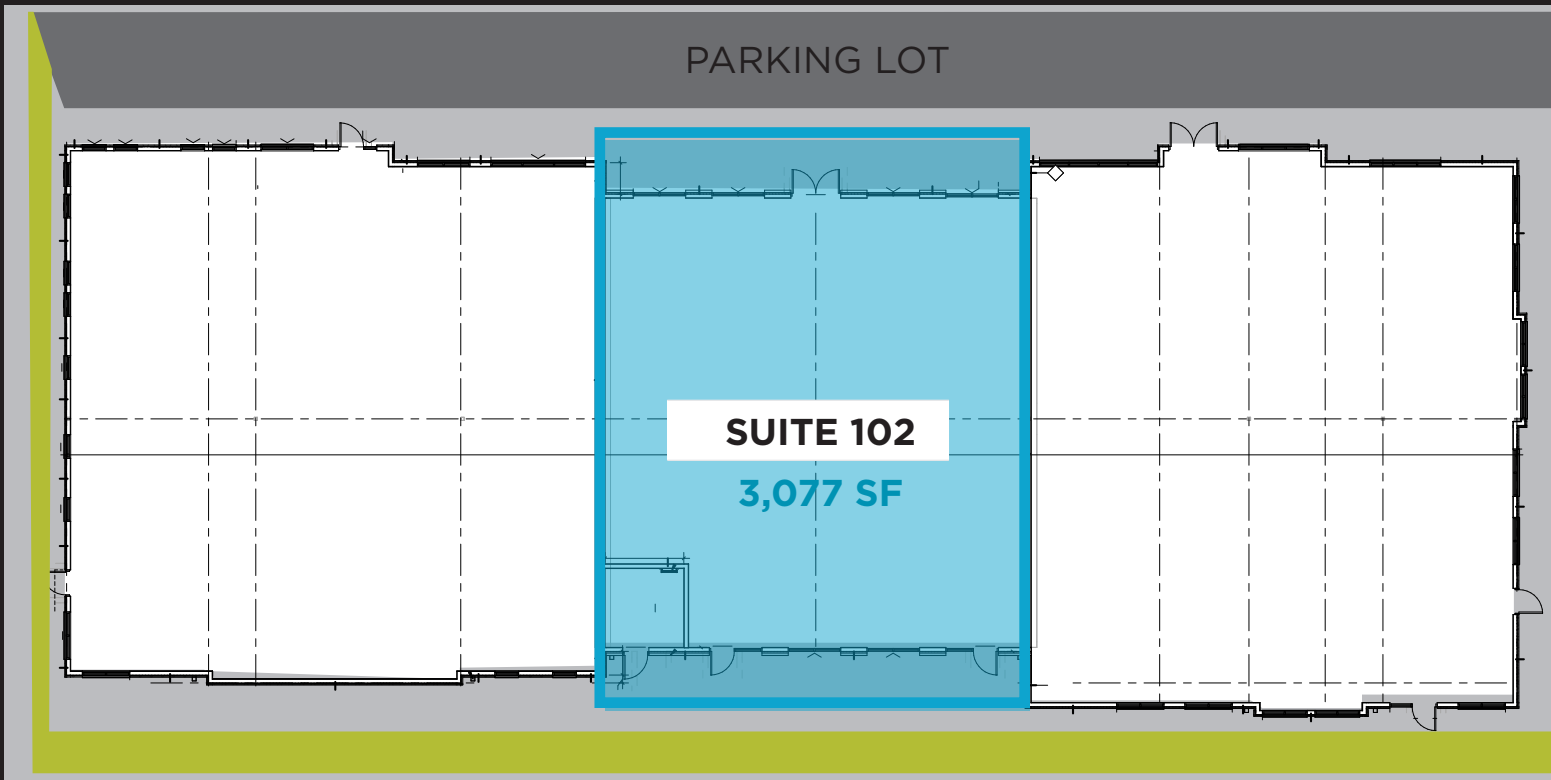


FLOOR PLAN

PARKING LOT

SUITE 102

3,077 SF



LOCATION

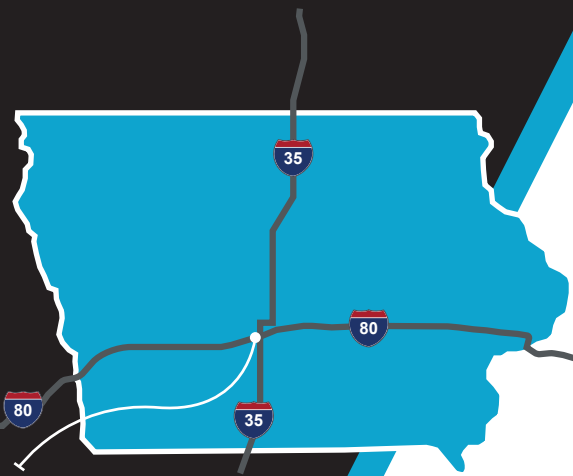
Prime Demographics:

Located in a thriving community with a strong residential base, ensuring a steady flow of potential customers and patients.



	1 MILE	3 MILES	5 MILES
Total Pop.	7,396	52,222	157,783
Total HH	2,482	19,724	62,458
Avg. Income	\$192,225	\$179,834	\$145,412

Urbandale is a rapidly growing area with ongoing residential and commercial developments, enhancing the potential for business growth.



BRANDON FITZ
Senior Associate
+1 319 400 0202
bfitz@iowaca.com

JORDAN BOUSLOG
Senior Associate
+1 515 402 9131
jbouslog@iowaca.com

MARK E. TIMMINS, J.D.
Senior Associate
+1 515 988 2765
mtimmins@iowaca.com



**CLICK HERE TO VIEW
DRONE FOOTAGE**

©2024 Cushman & Wakefield. All rights reserved. The information contained in this communication is strictly confidential. This information has been obtained from sources believed to be reliable but has not been verified. NO WARRANTY OR REPRESENTATION, EXPRESS OR IMPLIED, IS MADE AS TO THE CONDITION OF THE PROPERTY (OR PROPERTIES) REFERENCED HEREIN OR AS TO THE ACCURACY OR COMPLETENESS OF THE INFORMATION CONTAINED HEREIN, AND SAME IS SUBMITTED SUBJECT TO ERRORS, OMISSIONS, CHANGE OF PRICE, RENTAL OR OTHER CONDITIONS, WITHDRAWAL WITHOUT NOTICE, AND TO ANY SPECIAL LISTING CONDITIONS IMPOSED BY THE PROPERTY OWNER(S). ANY PROJECTIONS, OPINIONS OR ESTIMATES ARE SUBJECT TO UNCERTAINTY AND DO NOT SIGNIFY CURRENT OR FUTURE PROPERTY PERFORMANCE.



**CUSHMAN &
WAKEFIELD**

Iowa Commercial Advisors