

CREATIVE OFFICE SPACE FOR LEASE
565 COMMERCIAL ST.
FINANCIAL DISTRICT



2ND FLOOR SUITE
3,939 +/- RSF

Historic Office Building
Fully Furnished,
High End Product
Exposed Brick
Open and Creative
Good Natural Light
Access 24/7



FOR MORE INFORMATION, CONTACT:

BRADLEY L. COLTON
(415) 834-1600

bcolton@coltoncommercialsf.com
License #: 00805116

BRYAN B. COLTON
(415) 595-6959

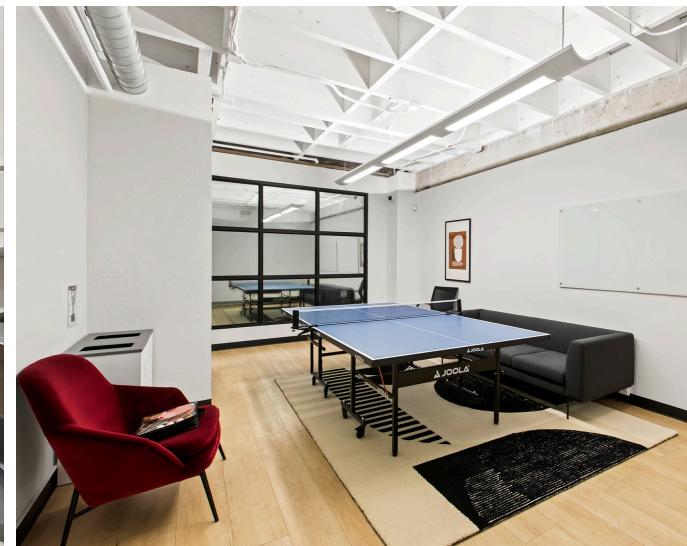
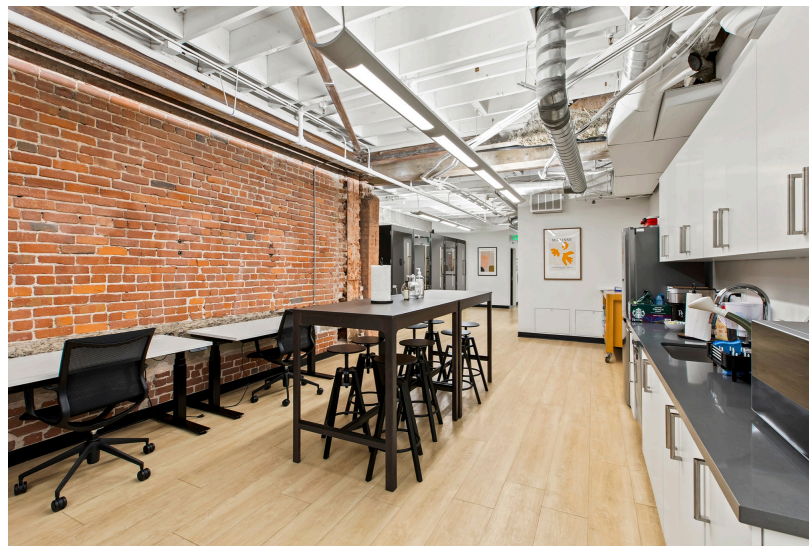
bryancolton@coltoncommercialsf.com
License #: 02111407

TORI DECOITE
(415) 590-7874

tdecoite@coltoncommercialsf.com
License #: 02042753

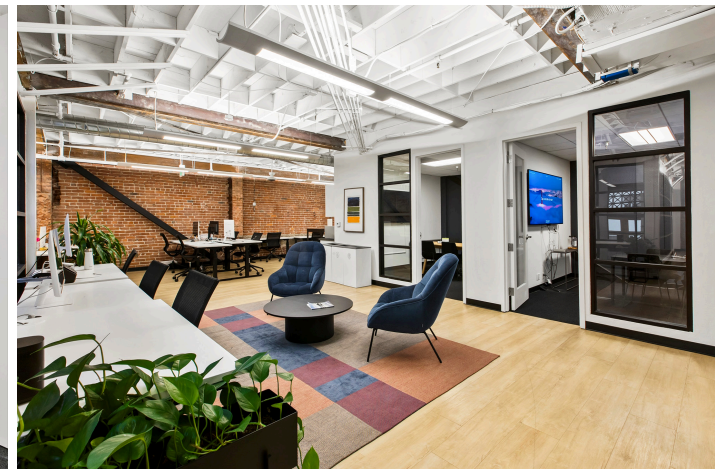
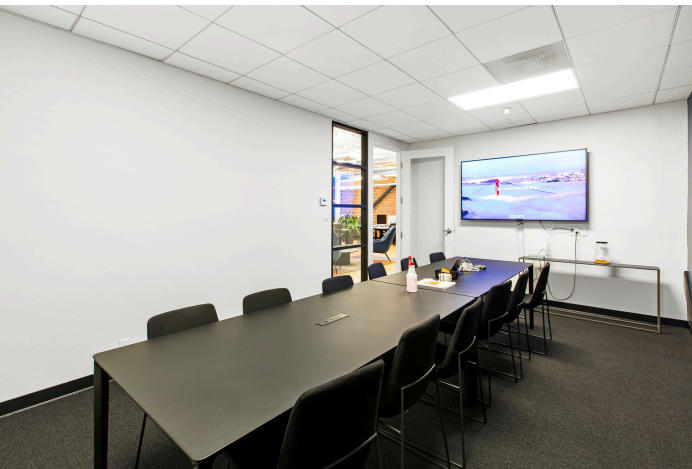
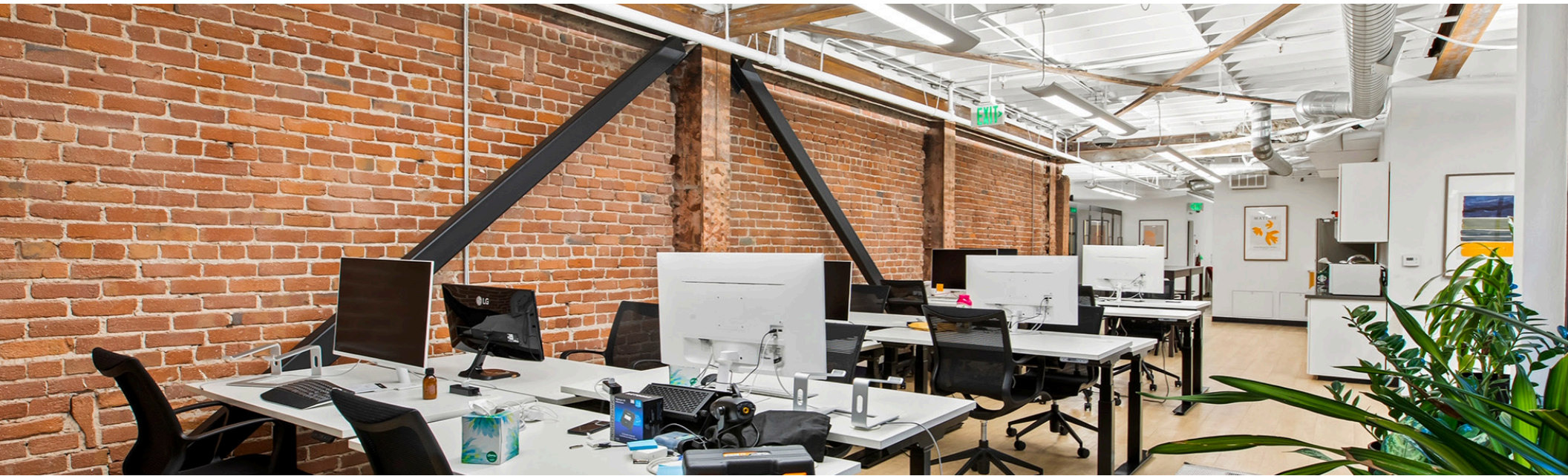


2ND FLOOR SUITE
565 COMMERCIAL ST.
3,939 +/- RSF



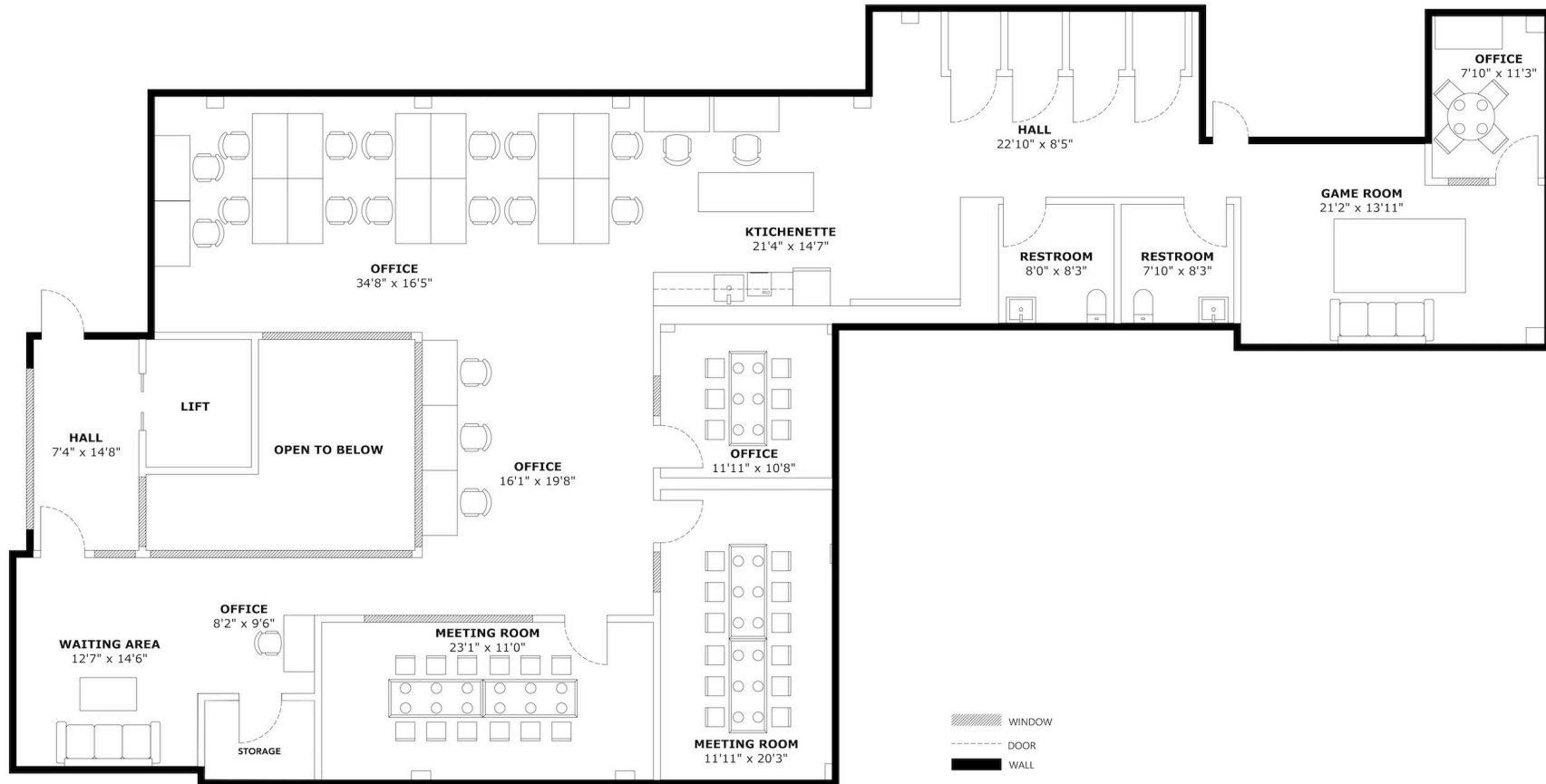
The foregoing is based upon information provided by others which we believe is accurate, however, no guarantee, warranty or representation is made. We recommend that all interested parties independently verify its accuracy and completeness. As well, any projections, assumptions, opinions, or estimates are used for example only and do not represent the current or future performance of the identified property. Your tax, financial, legal and toxic substance advisors should conduct a careful independent investigation of the property and its suitability for your needs, including land use limitations. The property is subject to prior lease, sale, change in price, or withdrawal from the market without notice.

2ND FLOOR SUITE
565 COMMERCIAL ST.
3,939 +/- RSF



The foregoing is based upon information provided by others which we believe is accurate, however, no guarantee, warranty or representation is made. We recommend that all interested parties independently verify its accuracy and completeness. As well, any projections, assumptions, opinions, or estimates are used for example only and do not represent the current or future performance of the identified property. Your tax, financial, legal and toxic substance advisors should conduct a careful independent investigation of the property and its suitability for your needs, including land use limitations. The property is subject to prior lease, sale, change in price, or withdrawal from the market without notice.

2ND FLOOR SUITE
565 COMMERCIAL ST.
3,939 +/- RSF



The foregoing is based upon information provided by others which we believe is accurate, however, no guarantee, warranty or representation is made. We recommend that all interested parties independently verify its accuracy and completeness. As well, any projections, assumptions, opinions, or estimates are used for example only and do not represent the current or future performance of the identified property. Your tax, financial, legal and toxic substance advisors should conduct a careful independent investigation of the property and its suitability for your needs, including land use limitations. The property is subject to prior lease, sale, change in price, or withdrawal from the market without notice.

CREATIVE OFFICE SPACE FOR LEASE
565 COMMERCIAL ST.
FINANCIAL DISTRICT

FOR MORE INFORMATION, CONTACT:

BRADLEY L. COLTON

(415) 834-1600

bcolton@coltoncommercialsf.com

License #: 00805116

BRYAN B. COLTON

(415) 595-6959

bryancolton@coltoncommercialsf.com

License #: 02111407

TORI DECOITE

(415) 590-7874

tdecoite@coltoncommercialsf.com

License #: 02042753

