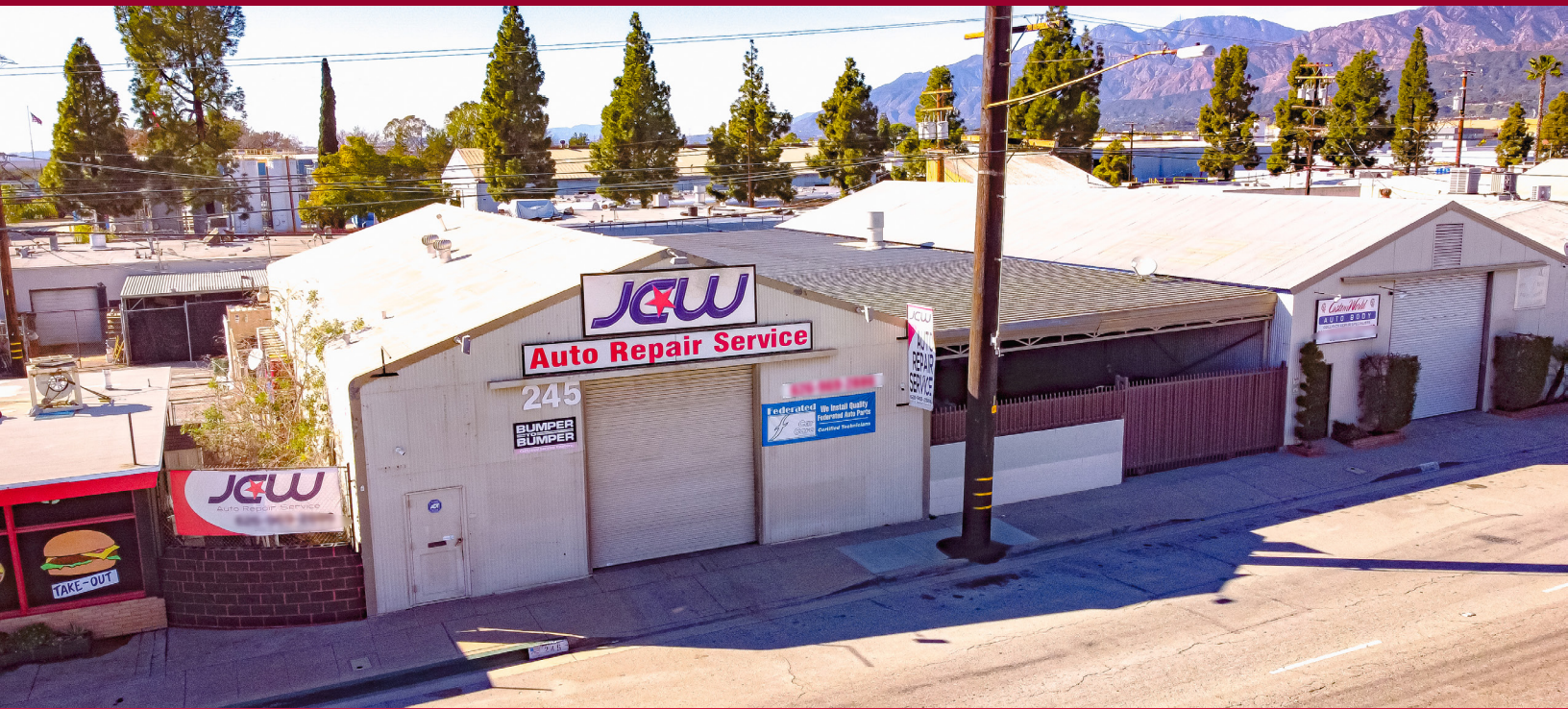


FOR SALE
±3,280 SF AVAILABLE

243-245 S. IRWINDALE AVE
AZUSA, CA 91702



- ±3,280 SF Industrial Building
- 2 Lots Totaling ±7,563 SF Lot
- ±230 SF of Office Space
- 3 Ground Level Doors
- Current Use is Auto Repair
- Close to I-210, I-605 & I-10 Freeways



MARK WHITE
mwhite@lee-assoc.com
D 909.373.2727
DRE #01807595

LEE & ASSOCIATES
3535 Inland Empire Boulevard
Ontario, CA 91764
(909) 989-7771

LEE & ASSOCIATES
COMMERCIAL REAL ESTATE SERVICES
Corporate ID: 00976995