

COMMERCIAL LEASE OPPORTUNITY

RIGHT SPACE | RIGHT PLACE



Ferreira Center

4403-4413 Riverside Dr. Chino, Suite E, CA 91710

PRESENTED BY

Warren Tsang

Senior Commercial Associate
951.283.1888
DRE Lic #01993434

Michelle Tsang

Senior Commercial Associate
951.283.8868
DRE Lic #01992330

MGR
Real Estate

Small Single-Story, Office Suite available for lease.

- 700 RSF move-in ready office Suite available.
- Open floor plan with 1 office, 1 restroom and full HVAC.
- Located on Riverside Dr. between Ramona and Norton Ave.
- Short Distance from Central Ave. Shopping/Food Center
- Easy accessibility to the CA-60 Freeway
- Modified Gross Lease

Commercial | Residential | Property Management

3800 E. Concourse St., Ste. 350 Ontario, CA 91764 PH: 909.981.4466

ONTARIO 909-981-4466

VICTORVILLE 760-955-7888

CARLSBAD 760-683-8102

www.mgrrealestate.com

BRE ID# 01841921

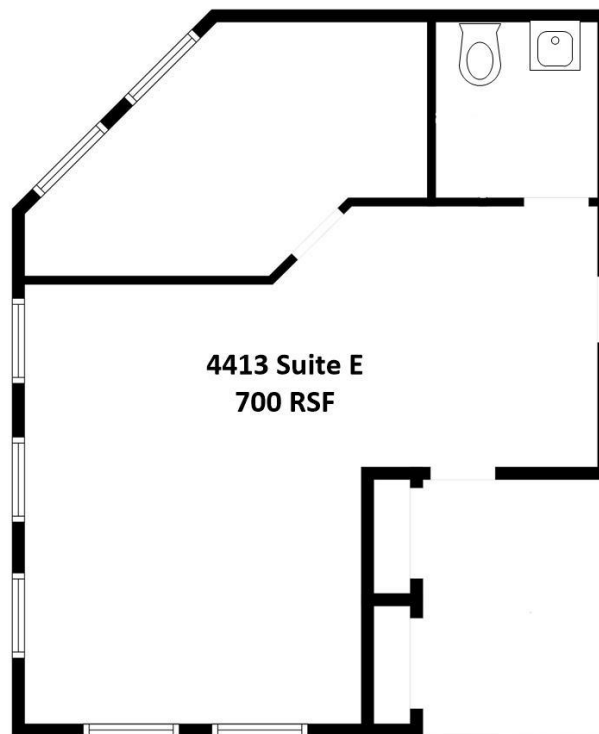
All items on this page are deemed to be accurate, but should be viewed as reference only. MGR Real Estate, Inc. does not warranty/guaranty the validity of any information on this page.



Ferreira Center
4403-4413 Riverside Dr, Chino, CA 91710
Office for Lease

4403-4413 Riverside Dr, Chino, CA 91710

Suite #	Rentable Sq. Ft.	Description
#E	700	1 Private Office, Open Area/Bullpen Area & 1 Restroom



For more information, contact:

Warren Tsang

Senior Commercial Associate | DRE #01993434

Office Direct: 909-981-4466 xt. 375

Michelle Tsang

Senior Commercial Associate | DRE. #01992330

Office Direct: 909-981-4466 xt. 421

*All items on this page are deemed to be correct but should be viewed as reference only. MGR Real Estate, Inc. does not warranty/guaranty the validity of any information on this page.

MGR Real Estate Inc. 3800 Concourse Street, Suite 350, California 91764 | Office: 909-981-4466 / Fax: 909-981-6267

Commercial Brokerage • Residential Real Estate • Property Management

Ontario-909-981-4466 Victorville-760-955-7888 Carlsbad-760-683-8102 Newport Beach-949-287-5200

WWW.MGRREALESTATE.COM | Lic. #01841921