

210 Bala Avenue

A Rare Retail Opportunity in the Heart of Bala Cynwyd



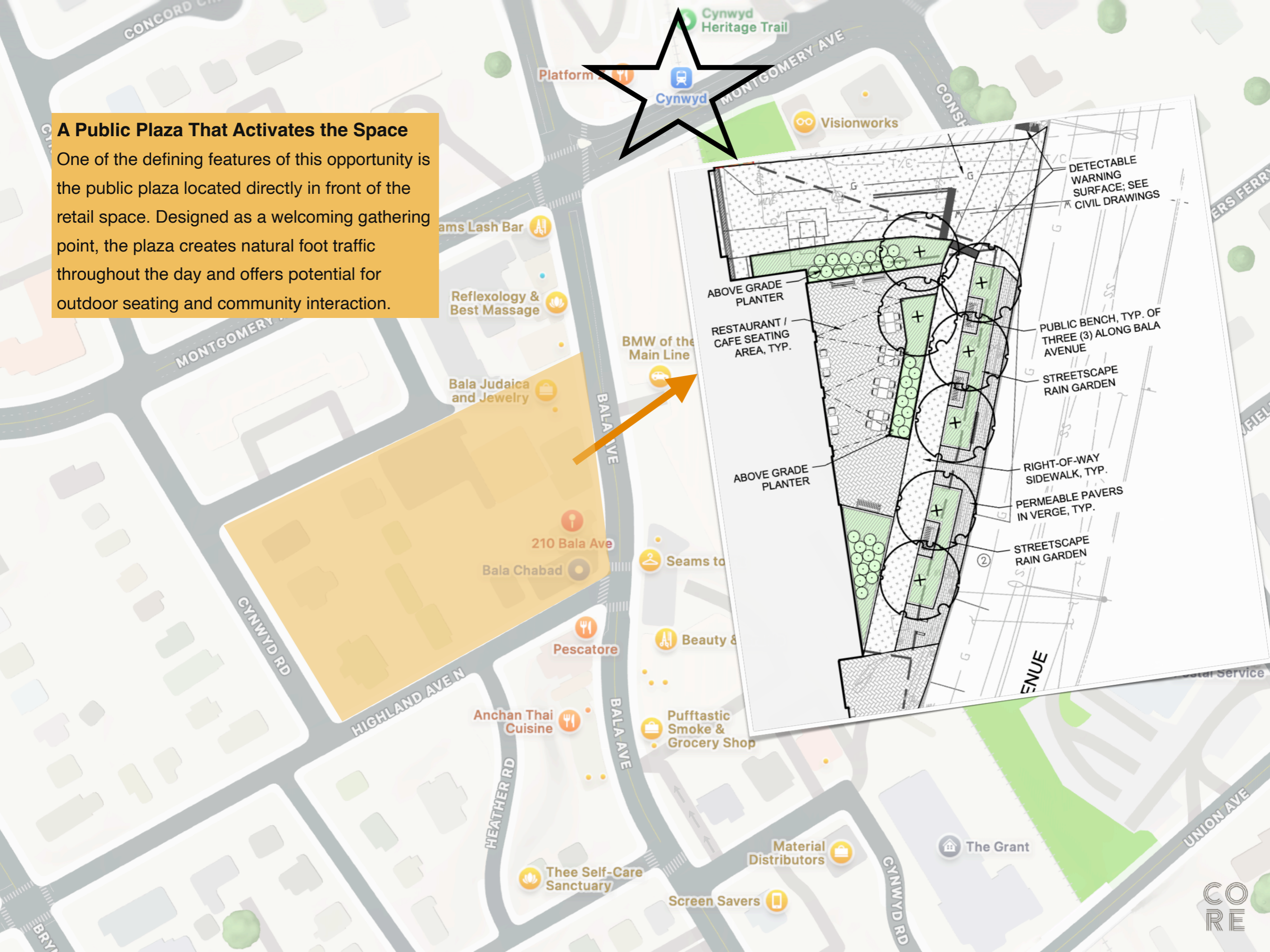


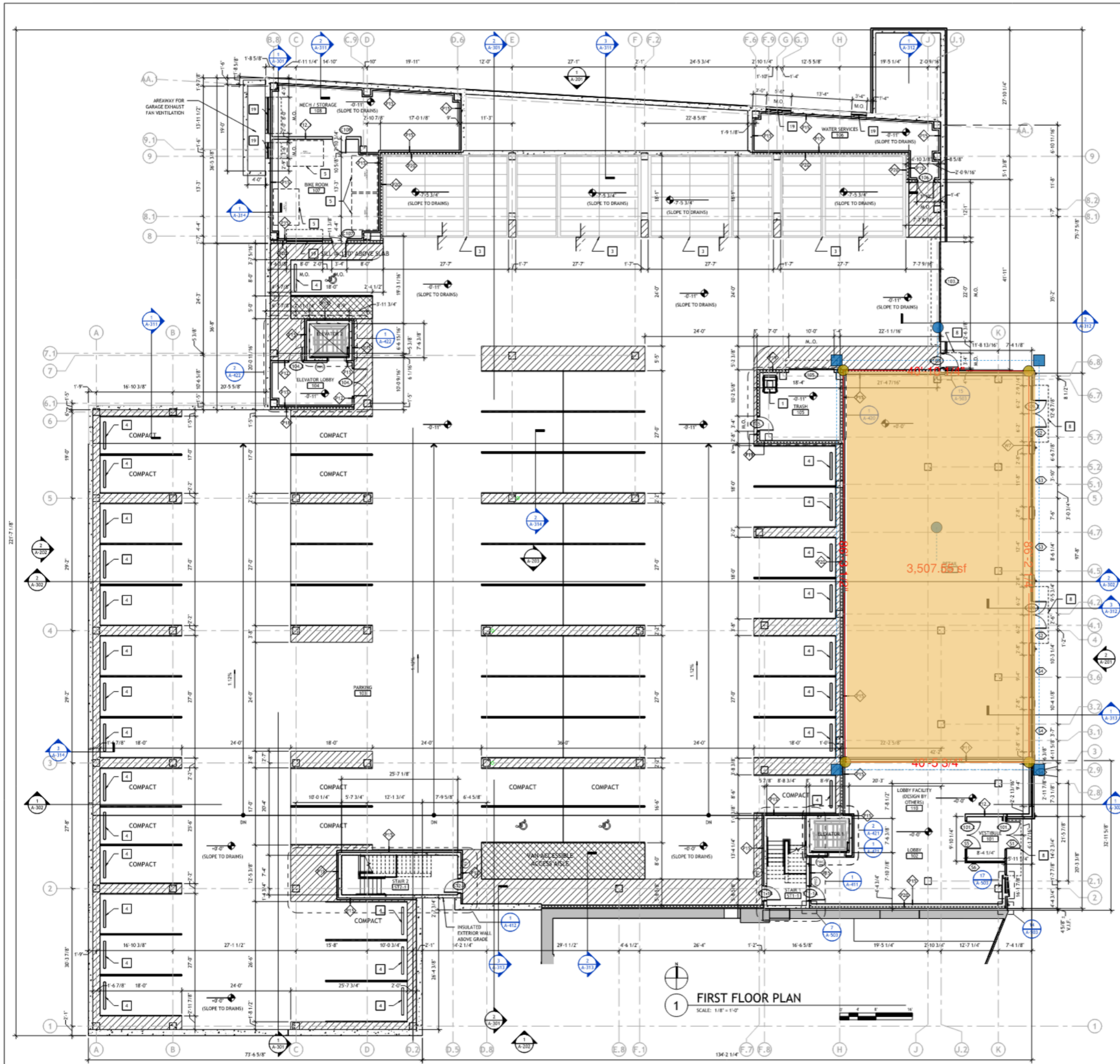
3,500 SF at 210 Bala Avenue

We're excited to introduce a rare retail opportunity at 210 Bala Avenue, a new mixed-use development located in the very heart of Bala Cynwyd, one of the Main Line's most established and affluent neighborhoods. This $\pm 3,500$ square foot retail space sits at the ground floor of a thoughtfully designed mixed-use project, surrounded by a strong residential base, daily foot traffic, and exceptional regional access. 210 Bala Avenue is positioned just steps from City Avenue, placing it at the intersection of Philadelphia and the Main Line — a location that benefits from both urban density and suburban affluence.

A Public Plaza That Activates the Space

One of the defining features of this opportunity is the public plaza located directly in front of the retail space. Designed as a welcoming gathering point, the plaza creates natural foot traffic throughout the day and offers potential for outdoor seating and community interaction.





3,500 SF
\$33 NNN

1 FIRST FLOOR PLAN
SCALE: 1/8" = 1'-0"