

FOR LEASE – *Newly Renovated!*

Commerce Park Commons

273 Franklin Road, Randolph, NJ

Exclusive Leasing Agent:



Resource Realty
Corporate Real Estate Services

www.resource-realty.com



Loading

PROPERTY SPECS:

Fully Air-Conditioned

Property Type: Industrial Condos

Total Building Size: 27,343 SF

Lease Rate: Call for pricing

Ceiling Height: 12' clear

Loading: 1 Tailgate per 2,600 SF unit

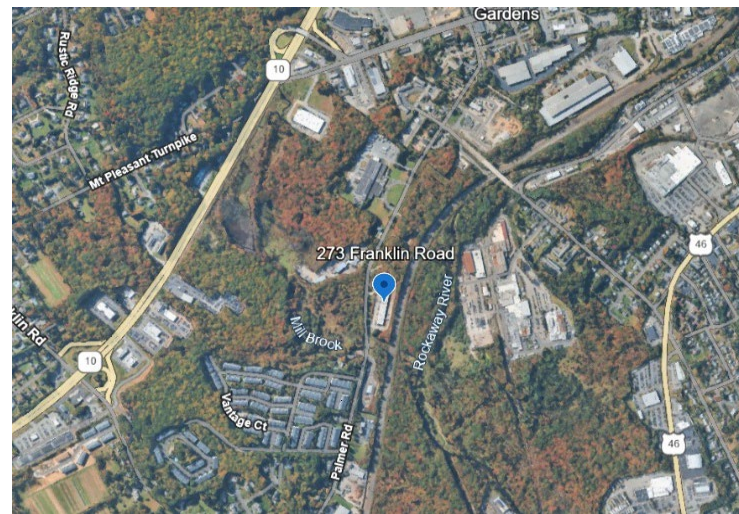
Parking: 83 spaces

Taxes & CAM: Estimated \$4.00 PSF

Utilities: All units separately metered

Zone: 1-1 (Industrial District)

Comments: Newly renovated industrial condos in multiple sizes for lease. Available immediately.



Location Highlights:

- Close proximity to **Route 10** and **Route 46**, offering convenient access to major highways
- On-site parking available

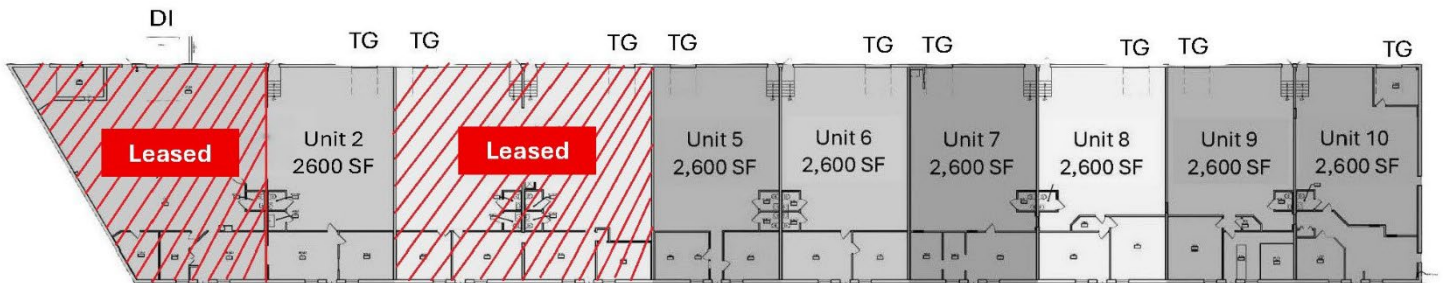
Office



Warehouse



Units from 2,600 SF can be combined



For more information, please contact:

Thomas P. Consiglio, SIOR
tconsiglio@resource-realty.com
C: 551-427-5003

Brian Wilson, SIOR
bwilson@resource-realty.com
C: 973-219-1331

Exclusive Leasing Agent:



Resource Realty
Corporate Real Estate Services
www.resource-realty.com



www.commerceparkventures.com

O: 973-299-0900

All information furnished is from sources deemed reliable. No representation is made as to the accuracy thereof and it is submitted subject to error, omission, change of price, prior sale or lease and withdrawal without notice. Any commission due cooperating brokers is subject to all of the terms and conditions upon which we and our clients have agreed.