



**Property Type:**  
Office / Retail ("As Is")

**Price:**  
\$1,590,000.00

**Land Size:**  
(+-) 0.33 Acres

**Building Size:**  
(+-) 1,800 s.f.

**Building Features:**  
Reception Area  
Conference Room  
Break / File Room  
(3) Main floor Offices  
(1) Studio Loft

**Area Features:**  
WestStone Shops  
Minutes from CBD  
Drop-In Store  
Bohemian Café  
Waffle House  
NorthPointe Shop Ctr.

**Access:**  
117.5 ft. Frontage on  
W. Stone Ave.

**Parking:**  
On-Site

**Zoning:**  
City of Greenville  
MX-2

**Tax Map's:**  
0009000401600  
0009000401500

**Available For Sale**  
**103 W. Stone Ave., Greenville, SC 29609**



M.S. Shore Company, Inc.  
904 N. Church St.  
Greenville, SC 29601

Phone (864) 235-3898  
Fax (864) 235-0448  
[msshore@msshore.com](mailto:msshore@msshore.com)

No warranty or representation, expressed or implied is made as to the accuracy of the information contained herein and same is submitted subject to errors, omissions, change of price, rental or other conditions, withdrawal without notice and to any special listing conditions imposed by our principals.

# SHORE

M.S. SHORE COMPANY, INC.



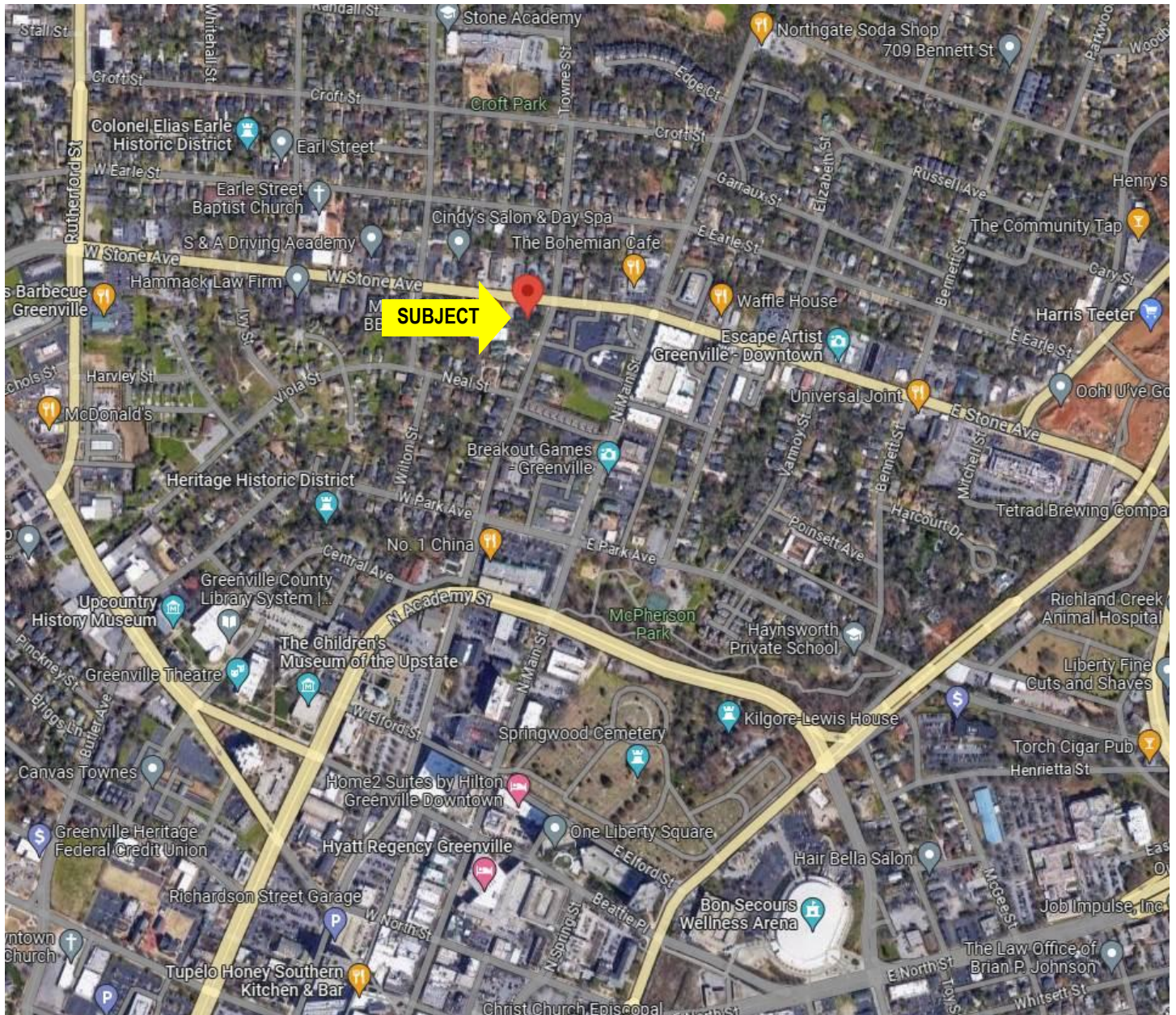
M.S. Shore Company, Inc.  
904 N. Church St.  
Greenville, SC 29601

Phone (864) 235-3898  
Fax (864) 235-0448  
[msshore@msshore.com](mailto:msshore@msshore.com)

No warranty or representation, expressed or implied is made as to the accuracy of the information contained herein and same is submitted subject to errors, omissions, change of price, rental or other conditions, withdrawal without notice and to any special listing conditions imposed by our principals.

# SHORE

M.S. SHORE COMPANY, INC.



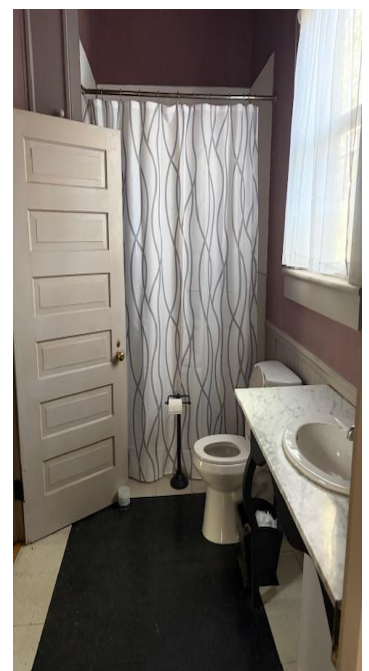
M.S. Shore Company, Inc.  
904 N. Church St.  
Greenville, SC 29601

Phone (864) 235-3898  
Fax (864) 235-0448  
msshore@msshore.com

No warranty or representation, expressed or implied is made as to the accuracy of the information contained herein and same is submitted subject to errors, omissions, change of price, rental or other conditions, withdrawal without notice and to any special listing conditions imposed by our principals.

# SHORE

M.S. SHORE COMPANY, INC.



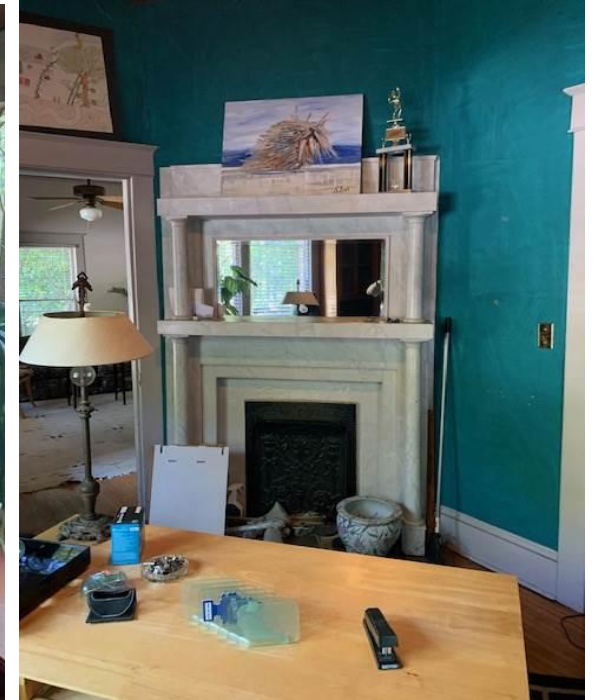
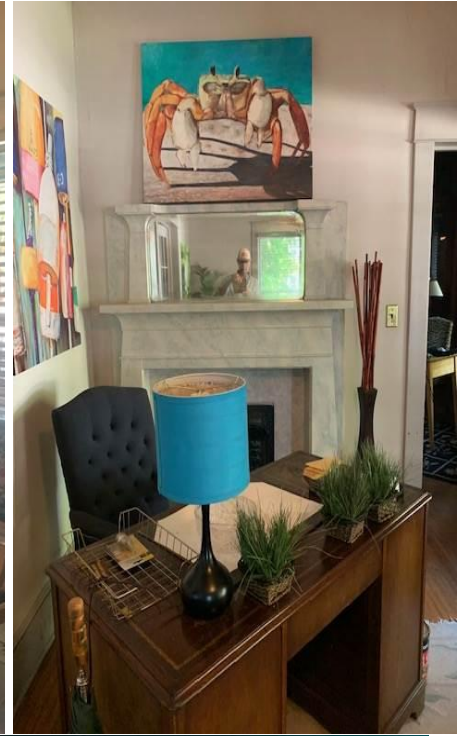
M.S. Shore Company, Inc.  
904 N. Church St.  
Greenville, SC 29601

Phone (864) 235-3898  
Fax (864) 235-0448  
[msshore@msshore.com](mailto:msshore@msshore.com)

No warranty or representation, expressed or implied is made as to the accuracy of the information contained herein and same is submitted subject to errors, omissions, change of price, rental or other conditions, withdrawal without notice and to any special listing conditions imposed by our principals.

# SHORE

M.S. SHORE COMPANY, INC.



M.S. Shore Company, Inc.  
904 N. Church St.  
Greenville, SC 29601

Phone (864) 235-3898  
Fax (864) 235-0448  
[msshore@msshore.com](mailto:msshore@msshore.com)

No warranty or representation, expressed or implied is made as to the accuracy of the information contained herein and same is submitted subject to errors, omissions, change of price, rental or other conditions, withdrawal without notice and to any special listing conditions imposed by our principals.

# SHORE

M.S. SHORE COMPANY, INC.



M.S. Shore Company, Inc.  
904 N. Church St.  
Greenville, SC 29601

Phone (864) 235-3898  
Fax (864) 235-0448  
[msshore@msshore.com](mailto:msshore@msshore.com)

No warranty or representation, expressed or implied is made as to the accuracy of the information contained herein and same is submitted subject to errors, omissions, change of price, rental or other conditions, withdrawal without notice and to any special listing conditions imposed by our principals.