

For Lease

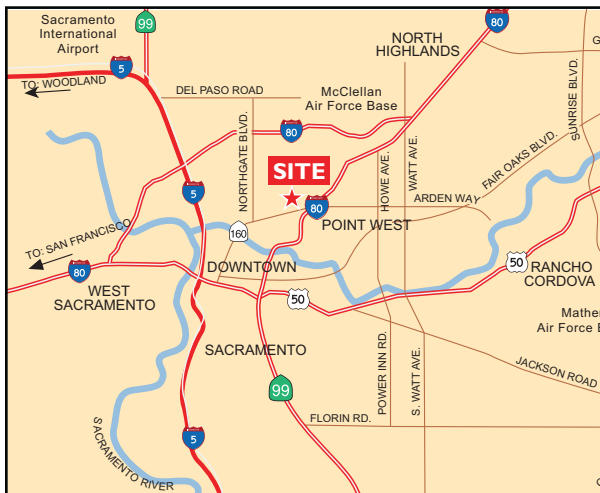
2000 & 2005 Evergreen Street

Sacramento, CA



Property Size: ±5,000 to ±39,000 SF Available

As exclusive agent, I am pleased to offer the following space:



- ◆ Convenient central location
- ◆ Just five minutes to Downtown via Highway 160
- ◆ Directly adjacent to Light Rail Station
- ◆ Abundant, on-site parking, free of charge
- ◆ Tenant improvements available

OMNINET



Kirk Lange 916.569.2331 klange@ngkf.com CA RE License #00870313

980 Ninth Street, Suite 2500, Sacramento, CA 95814

www.ngkf.com

The distributor of this communication is performing acts for which a real estate license is required. The information contained herein has been obtained from sources deemed reliable but has not been verified and no guarantee, warranty or representation, either express or implied, is made with respect to such information. Terms of sale or lease and availability are subject to change or withdrawal without notice.


17-0232 • 12/18

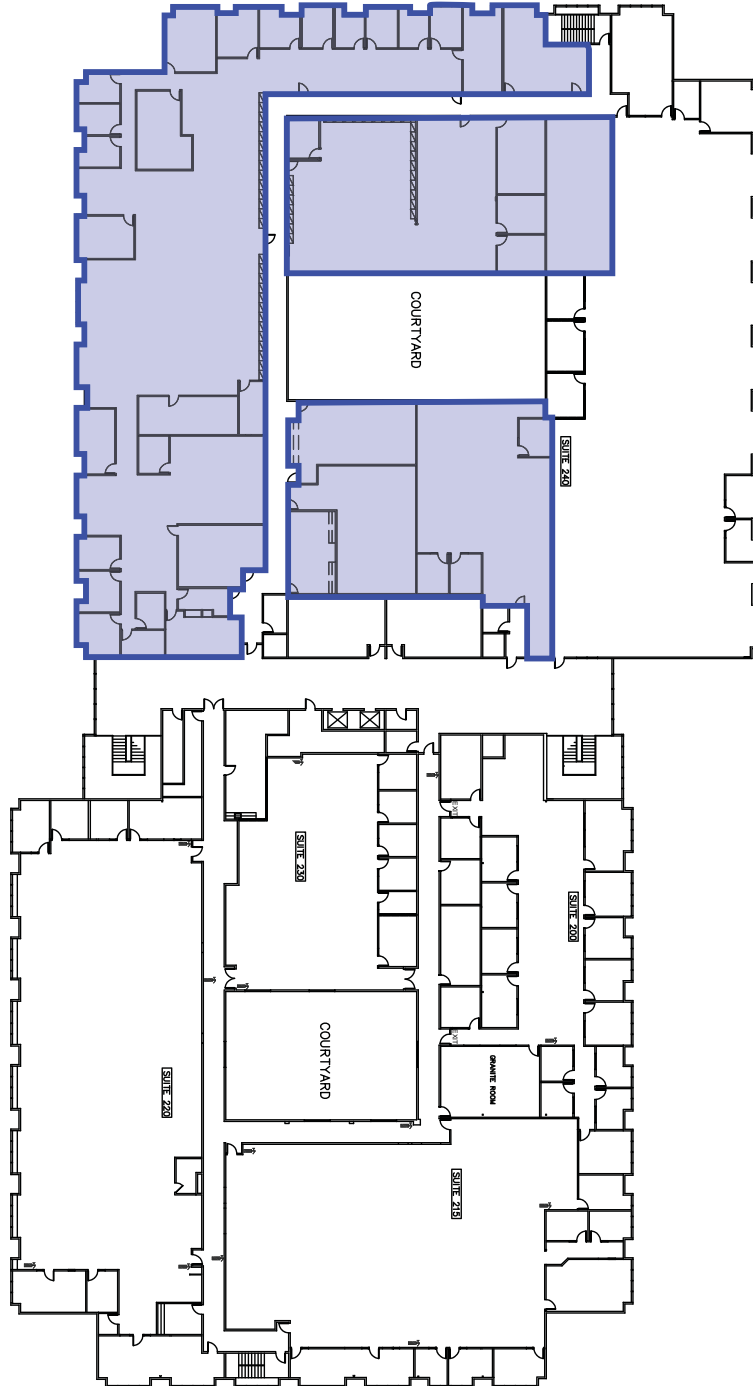
For Lease

2000 & 2005 Evergreen Street

Sacramento, CA

2000 Evergreen Street 2nd Floor

Available 
±23,774 SF
(Divisible)



OMNINET



Kirk Lange 916.569.2331 klange@ngkf.com CA RE License #00870313

980 Ninth Street, Suite 2500, Sacramento, CA 95814

www.ngkf.com

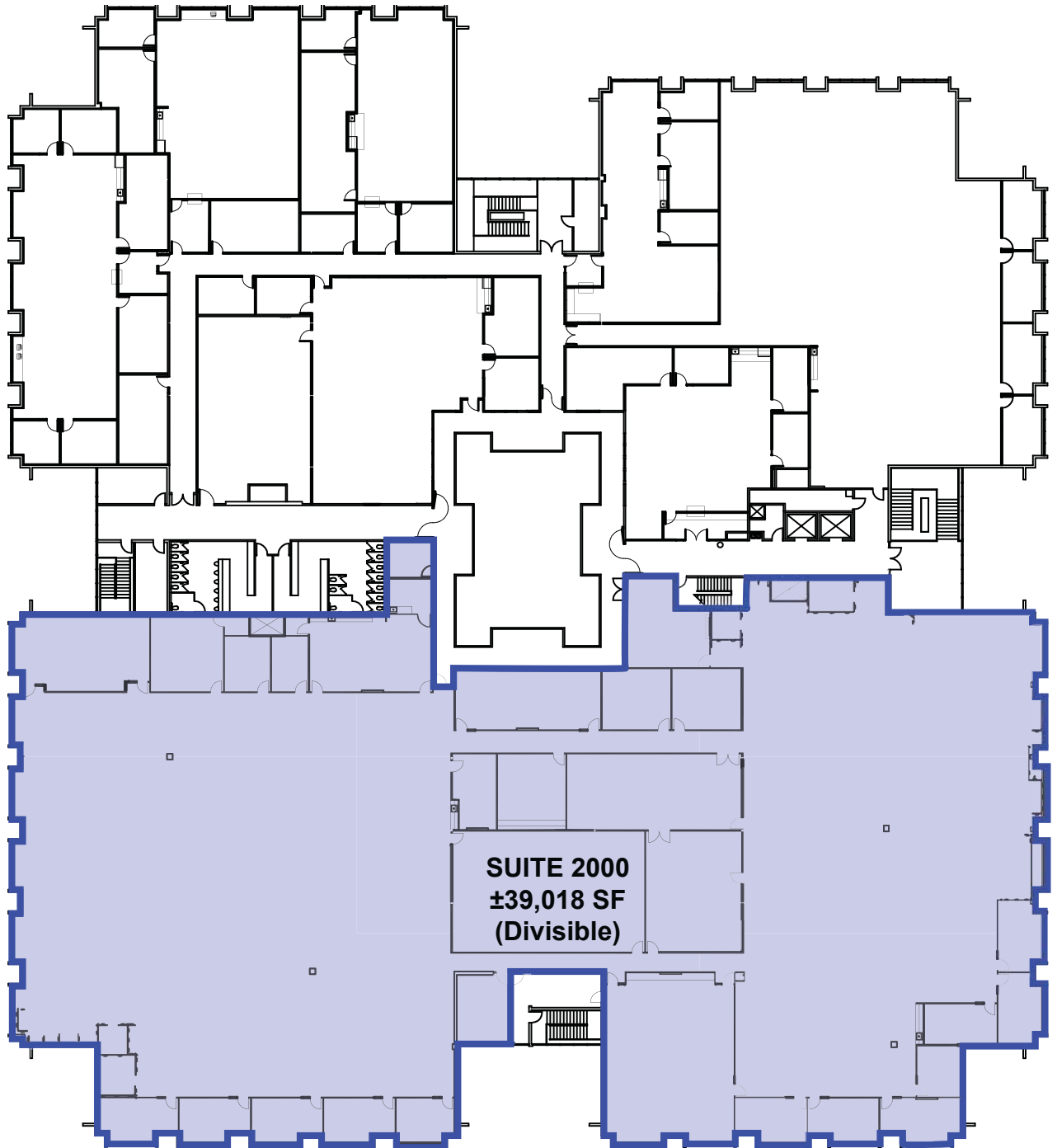
For Lease

2000 & 2005 Evergreen Street

Sacramento, CA

2005 Evergreen Street
2nd Floor

Available 



OMNINET



Kirk Lange 916.569.2331 klange@ngkf.com CA RE License #00870313

980 Ninth Street, Suite 2500, Sacramento, CA 95814

www.ngkf.com

The distributor of this communication is performing acts for which a real estate license is required. The information contained herein has been obtained from sources deemed reliable but has not been verified and no guarantee, warranty or representation, either express or implied, is made with respect to such information. Terms of sale or lease and availability are subject to change or withdrawal without notice.

For Lease

2000 & 2005 Evergreen Street

Sacramento, CA



OMNINET



Kirk Lange 916.569.2331 klange@ngkf.com CA RE License #00870313

980 Ninth Street, Suite 2500, Sacramento, CA 95814

www.ngkf.com

The distributor of this communication is performing acts for which a real estate license is required. The information contained herein has been obtained from sources deemed reliable but has not been verified and no guarantee, warranty or representation, either express or implied, is made with respect to such information. Terms of sale or lease and availability are subject to change or withdrawal without notice.