

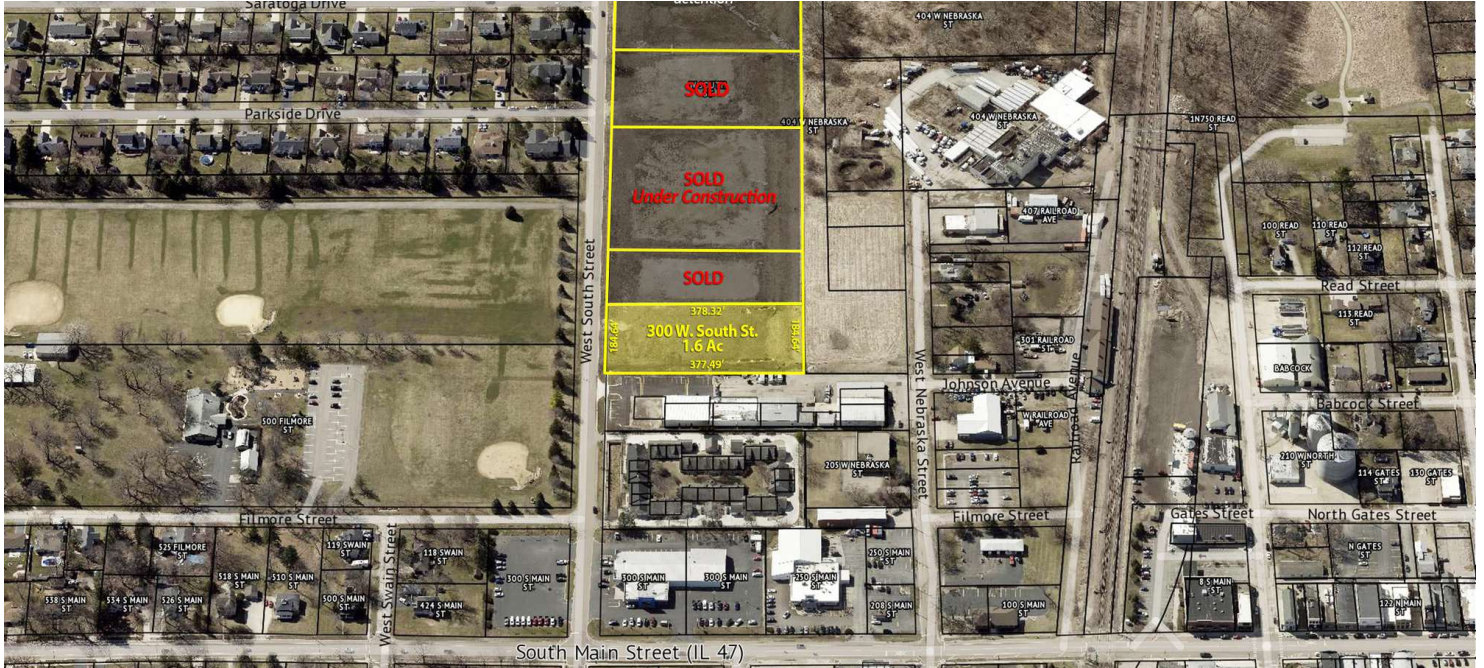
1.6 Acres

Commercial Property For Sale



BROWN
COMMERCIAL GROUP, INC.

W. SOUTH STREET, ELBURN, IL 60119

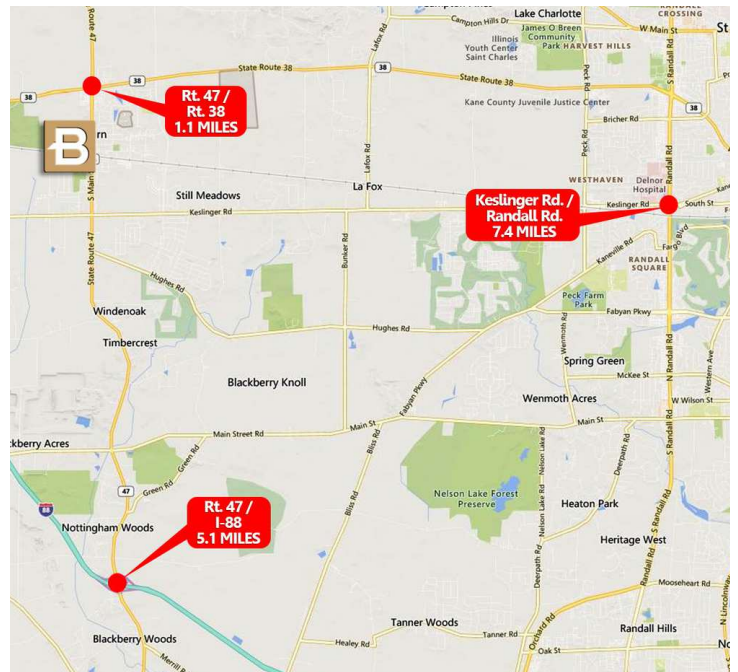


LOCATION DESCRIPTION

Far west Chicago suburb location in desirable Kane County. Easy access to major transportation routes via Rt. 47 and I-88.

PROPERTY OVERVIEW

- 1.6 Acre Lot
- Fully Developed
- Utilities To Site
- Water and Sewer to Site
- Off-site Detention Provided
- Last lot available on the street
- Ready for your business!
- B-1/B-2 Zoning (potential to rezone)
- Ideal site for lawn equipment dealer, motor sports/motorcycle dealer, etc.
- Sale Price: Subject To Offer



DAN BROWN

847.758.9200 x302

DBROWN@BROWNCOMMERCIAL.COM

BROWNCOMMERCIALGROUP.COM // 1400 E. HIGGINS RD. SUITE A, ELK GROVE VILLAGE, IL 60007 // 847.758.9200

No warranties or representations is made as to the accuracy of the foregoing information. Terms and availability are subject to changes or withdrawal without notice

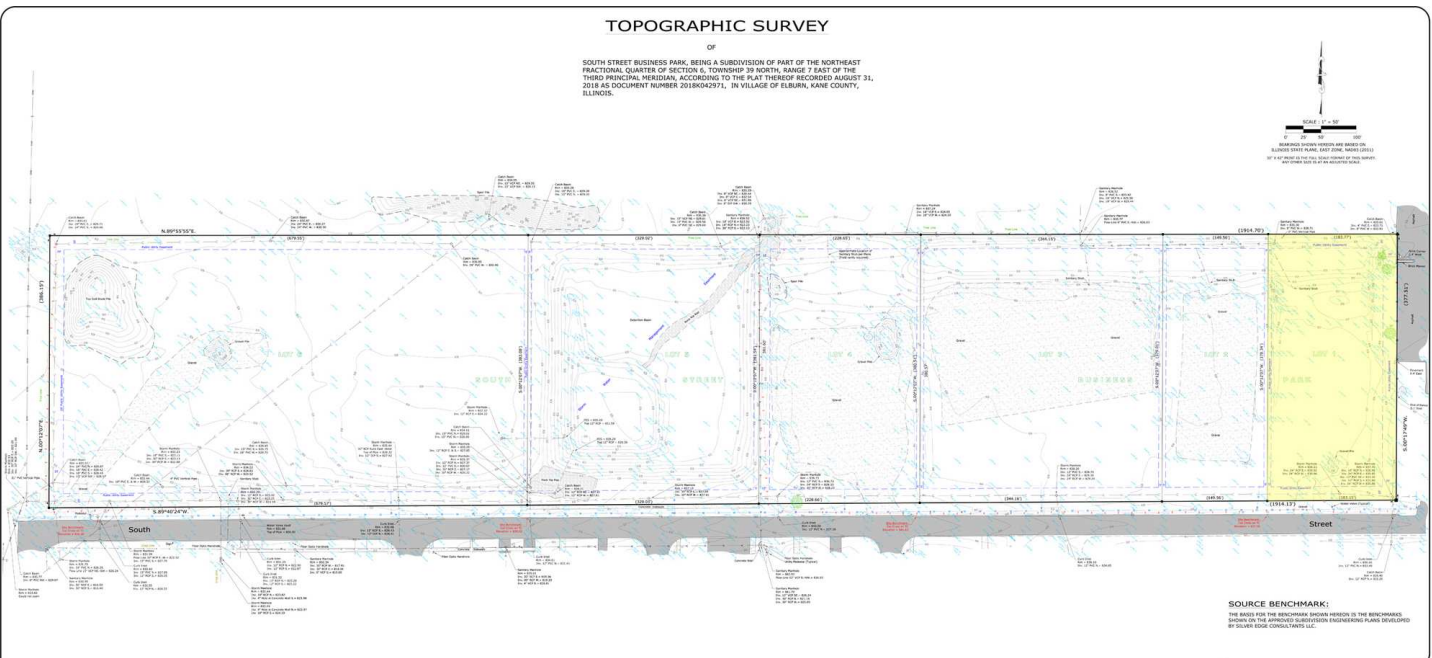
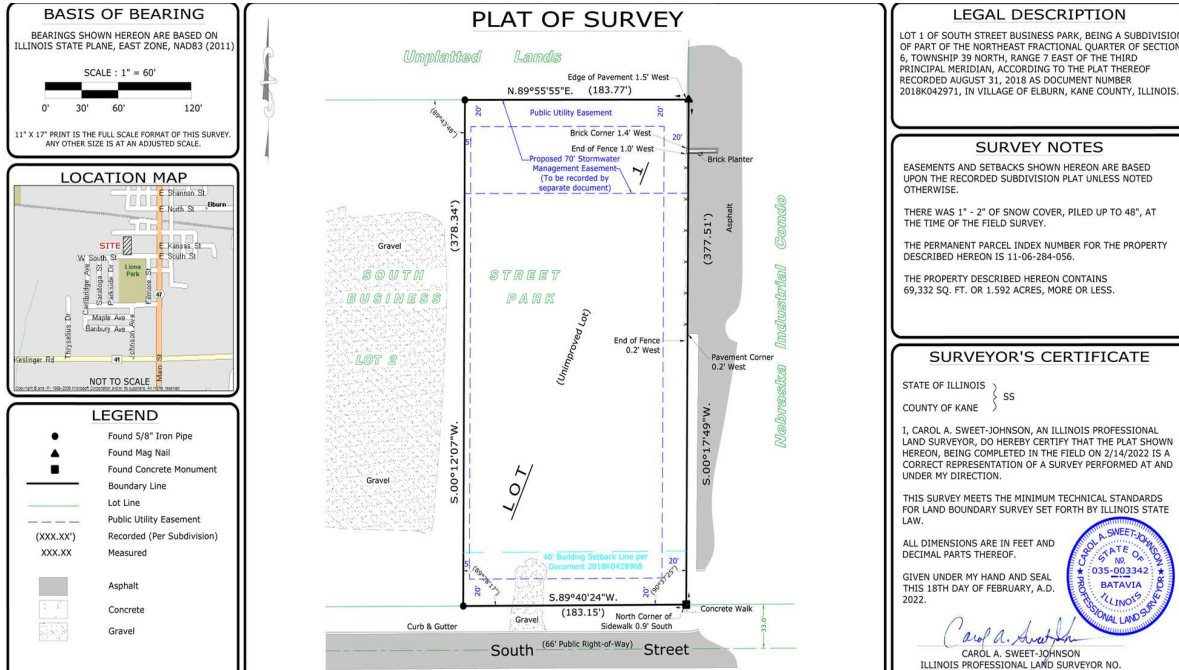
1.6 Acres

Commercial Property For Sale



BROWN
COMMERCIAL GROUP, INC.

W. SOUTH STREET, ELBURN, IL 60119



DAN BROWN

847.758.9200 x302

DBROWN@BROWNCOMMERCIAL.COM

BROWNCOMMERCIALGROUP.COM // 1400 E. HIGGINS RD. SUITE A, ELK GROVE VILLAGE, IL 60007 // 847.758.9200

No warranties or representations is made as to the accuracy of the foregoing information. Terms and availability are subject to changes or withdrawal without notice