



Colliers

Accelerating Access

FOR LEASE

Starting at:

\$6.95

PSF, NNN

Contact us:

Nathan Monan

+1 501 850 0710

nathan.monan@ar.colliers.com

Bill Pendergist, SIOR

+1 501 850 0750

bill.pendergist@ar.colliers.com

1 Allied Drive, Suite 1500,
Little Rock, AR 72202

P: +1 501 372 6161

colliers.com/arkansas

Showroom & Flex Space

For Lease: 6805 W 12th Street, Little Rock, AR

Features

- **Suite 6801A:** 2,400 SF - \$10.30/SF, NNN (showroom space with roll-up door)
- **Suite H:** 5,906 SF - \$6.95/SF, NNN (flex with 1,200 SF office in place)
- **Building 6807:** 20,602 SF - Negotiable, NNN (flex)
- Building 6807 may be subdivided
- Flex spaces have dock-high doors
- Quick access to I-630
- Secured, gated parking available

Copyright © 2025 Colliers International.

Information herein has been obtained from sources deemed reliable, however its accuracy cannot be guaranteed. The user is required to conduct their own due diligence and verification.

Neighborhood Map



Copyright © 2025 Colliers International.

Information herein has been obtained from sources deemed reliable, however its accuracy cannot be guaranteed. The user is required to conduct their own due diligence and verification.

Contact us:

Nathan Monan

+1 501 850 0710

nathan.monan@ar.colliers.com

Bill Pendergist, SIOR

+1 501 850 0750

bill.pendergist@ar.colliers.com

Colliers | AR

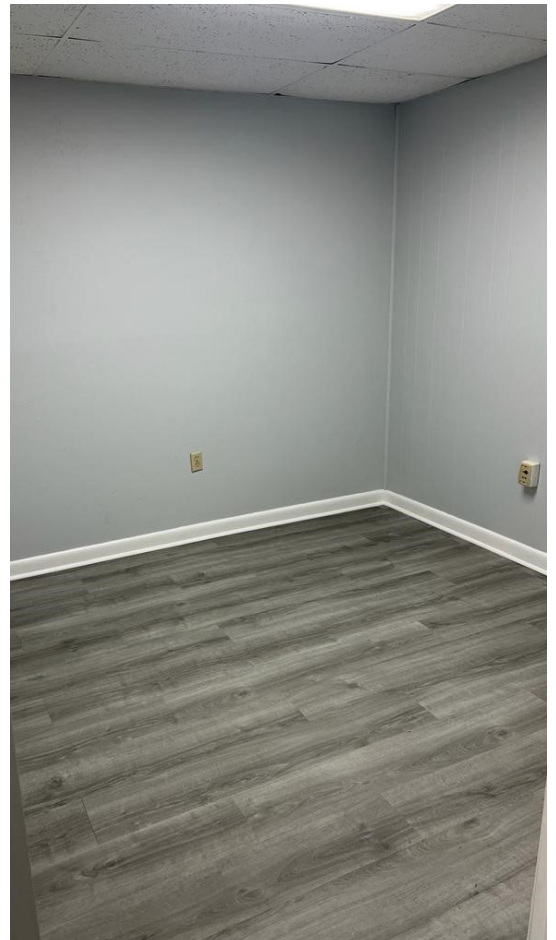
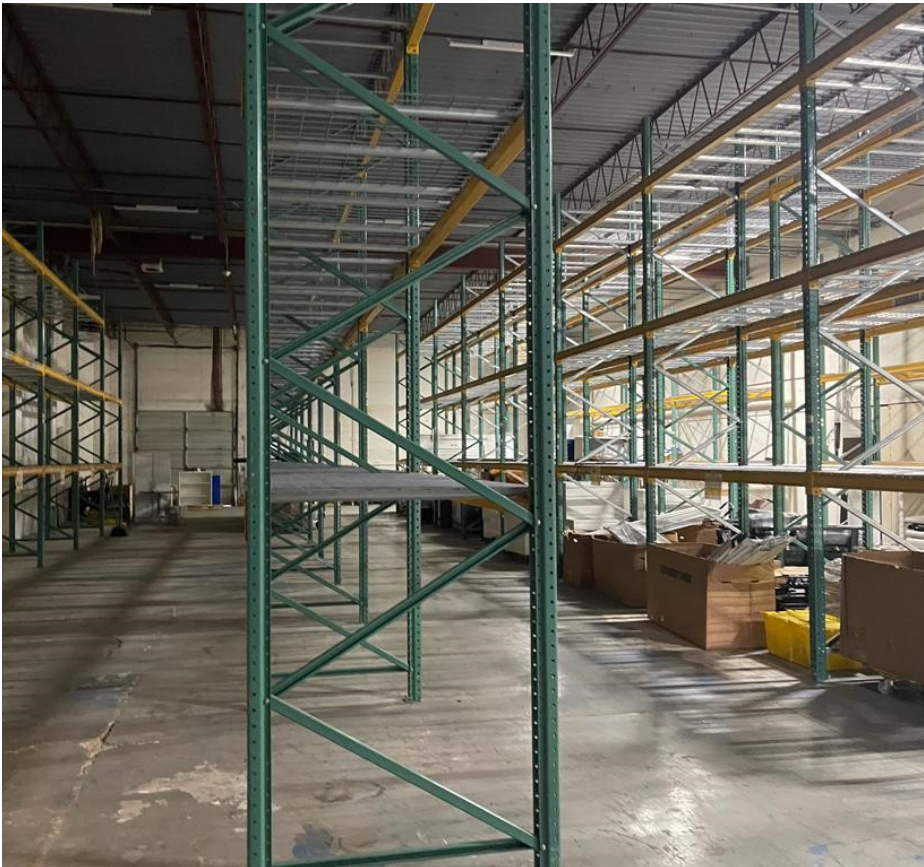
1 Allied Drive, Suite 1500

Little Rock, AR 72202

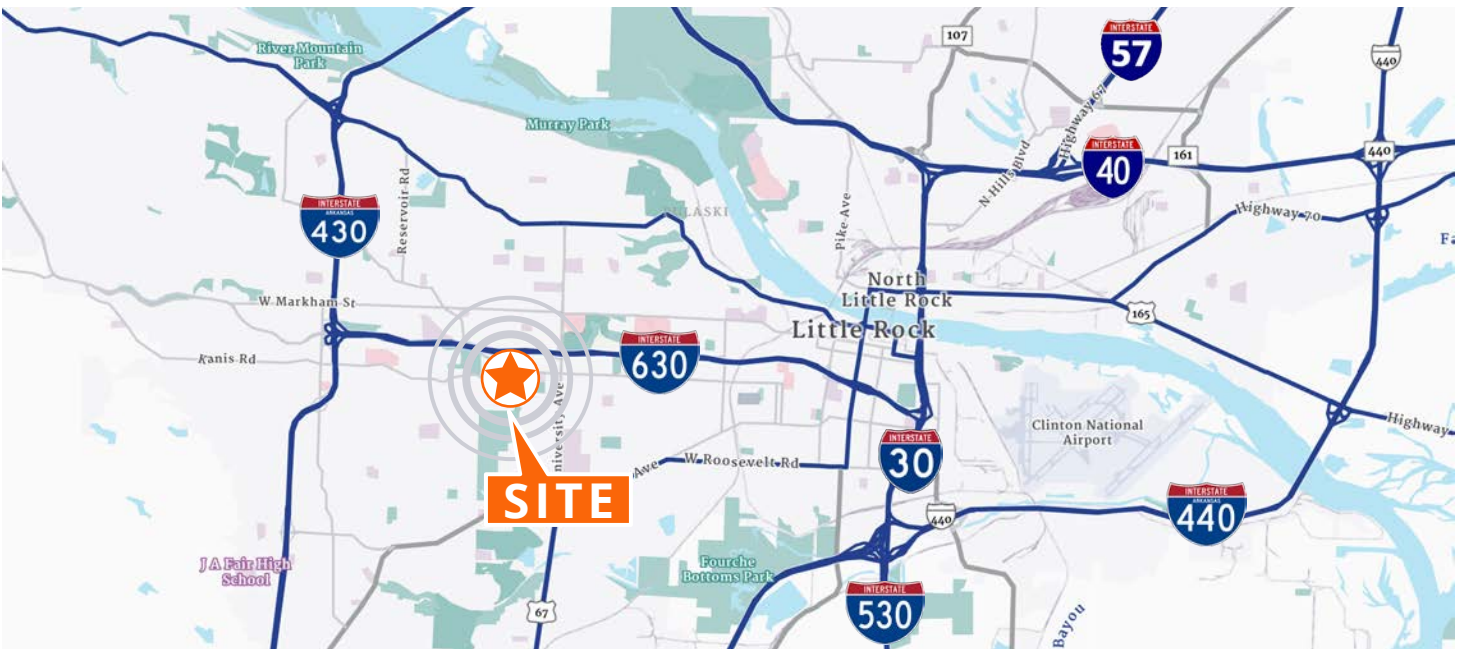
P: +1 501 372 6161

F: +1 501 372 0671

Property Photos



Property Photos



Floor Plans

Suite	Square Footage
Suite A-B	6,530 SF
Suite C	4,589 SF
Suite D	4,518 SF
Suite E	4,514 SF
Suite H	5,906 SF

