

1335 ABBOT KINNEY RETAIL FOR SUBLEASE



CARINE MAMANN
Executive Director | Lic. 01734150
carine.mamann@cushwake.com
T. 310 595 2235

KAZUKO Y. MORGAN
Executive Vice Chairman | Lic. 01070005
kazuko.morgan@cushwake.com
T. 415 773 3546

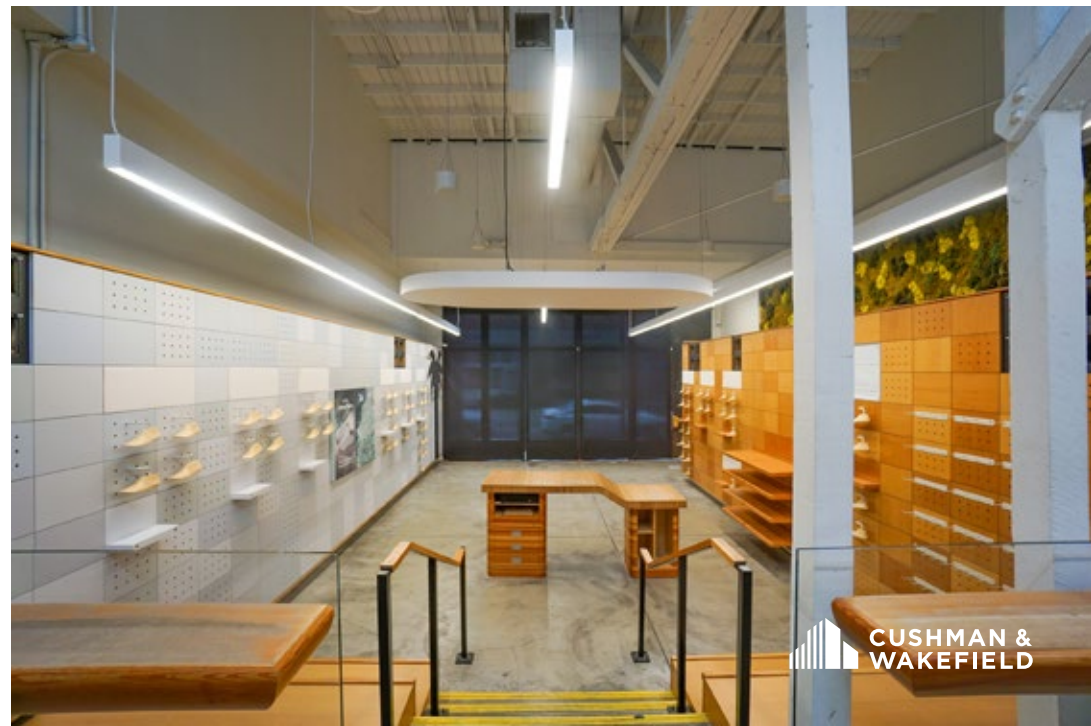
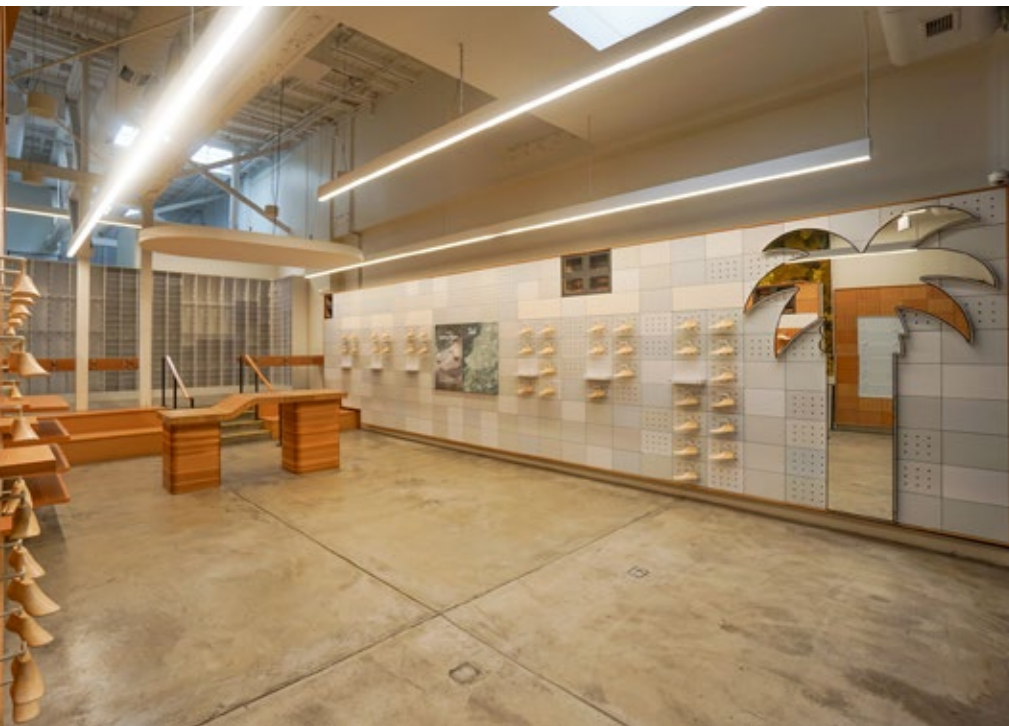


THE OFFERING

THE ABBOT KINNEY SPACE SITS COURTSIDE ON THE MOST DESIRABLE STREET IN THE WORLD, SURROUNDED BY THE MOST DISTINGUISHED & WELL-KNOWN RESTAURANTS & EATERIES IN LOS ANGELES.

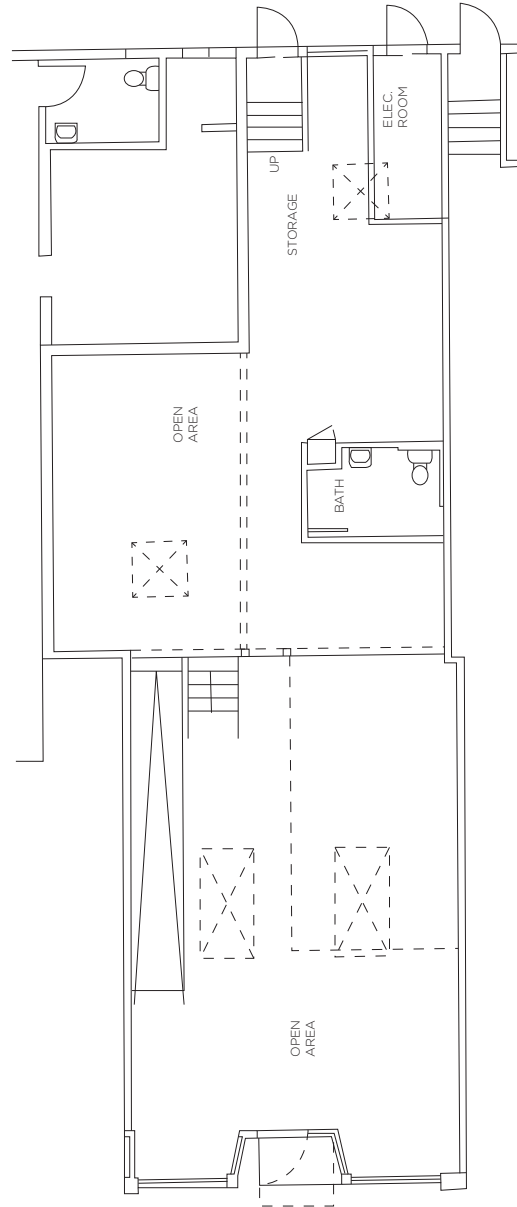
GQ Magazine named Abbot Kinney the coolest block in America. Located in the heart of Venice on the hard corner of California Avenue, this rare opportunity in the city's most expensive zip code faces the only stop light on all of Abbot Kinney Boulevard, making it the hottest property on the market today.

1335 ABBOT KINNEY BOULEVARD



1335 ABBOT KINNEY BOULEVARD

GROUND



TOTAL AVAILABLE
± 1,875 SF

ABBOT KINNEY BOULEVARD

LOCATION



- Salt & Straw
- Vince
- Billy Reid
- Adidas
- Todd Snyder
- illesteva
- John Fluevog
- Velvet by
- Graham & Spencer

IRO Paris

- Madewell
- The Butcher's Daughter
- AHLEM
- Industry of All Nations
- The Great

- Blue Bottle Coffee
- Everlane

- Madewell
- Kreation Juice
- Malin + Goetz
- Intimissimi

- J. Crew
- Faherty
- FARM Rio

- Aviator Nation
- Birkenstock

- Marine Layer
- Le Labo
- Suitsupply

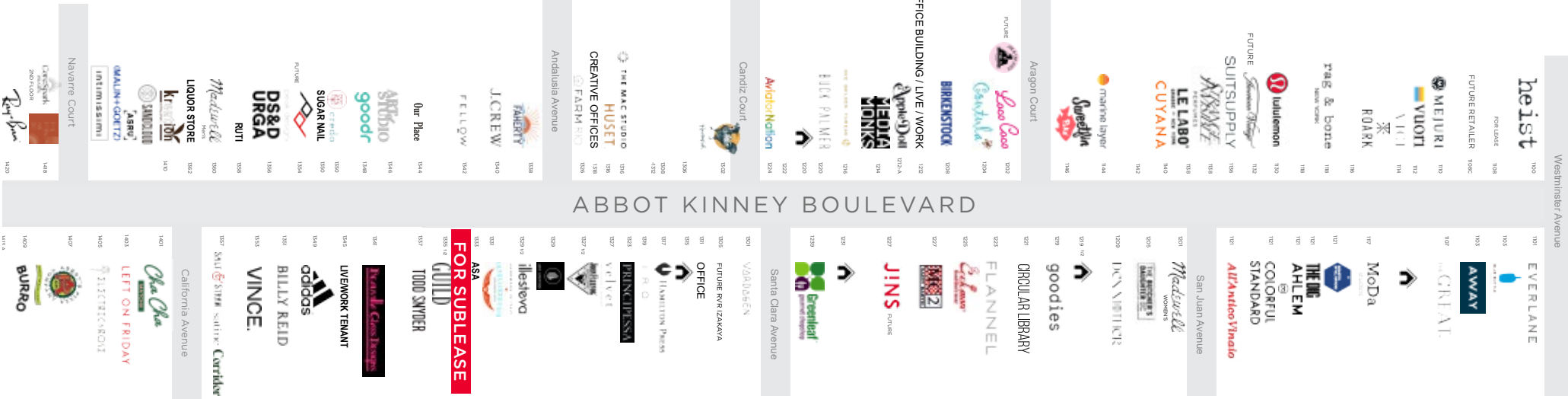
- lululemon
- rag & bone

Roark

Vuori

Mejuri

RETAIL STREET MAP



1335 ABBOT KINNEY RETAIL FOR SUBLEASE



CARINE MAMANN
Executive Director | Lic. 01734150
carine.mamann@cushwake.com
T. 310 595 2235

KAZUKO Y. MORGAN
Executive Vice Chairman | Lic. 01070005
kazuko.morgan@cushwake.com
T. 415 773 3546