

FULL FLOOR AVAILABILITY

1115 WESTFORD STREET

Lowell, Massachusetts

OFFICE SPACE

5,110 - 10,220 SF Available



1115 WESTFORD STREET

Lowell, Massachusetts



PROPERTY SPECIFICATIONS

AVAILABLE SF: 10,220 SF (Subdividable to half floor)

PROPERTY TYPE: Office

LAND: 0.74 Acres

YEAR BUILT: 2001

ZONING: OP

PARKING: 3.5/1,000 SF - Surface & Covered

R.E. TAX / CAM: \$65,544 (Annual Taxes)

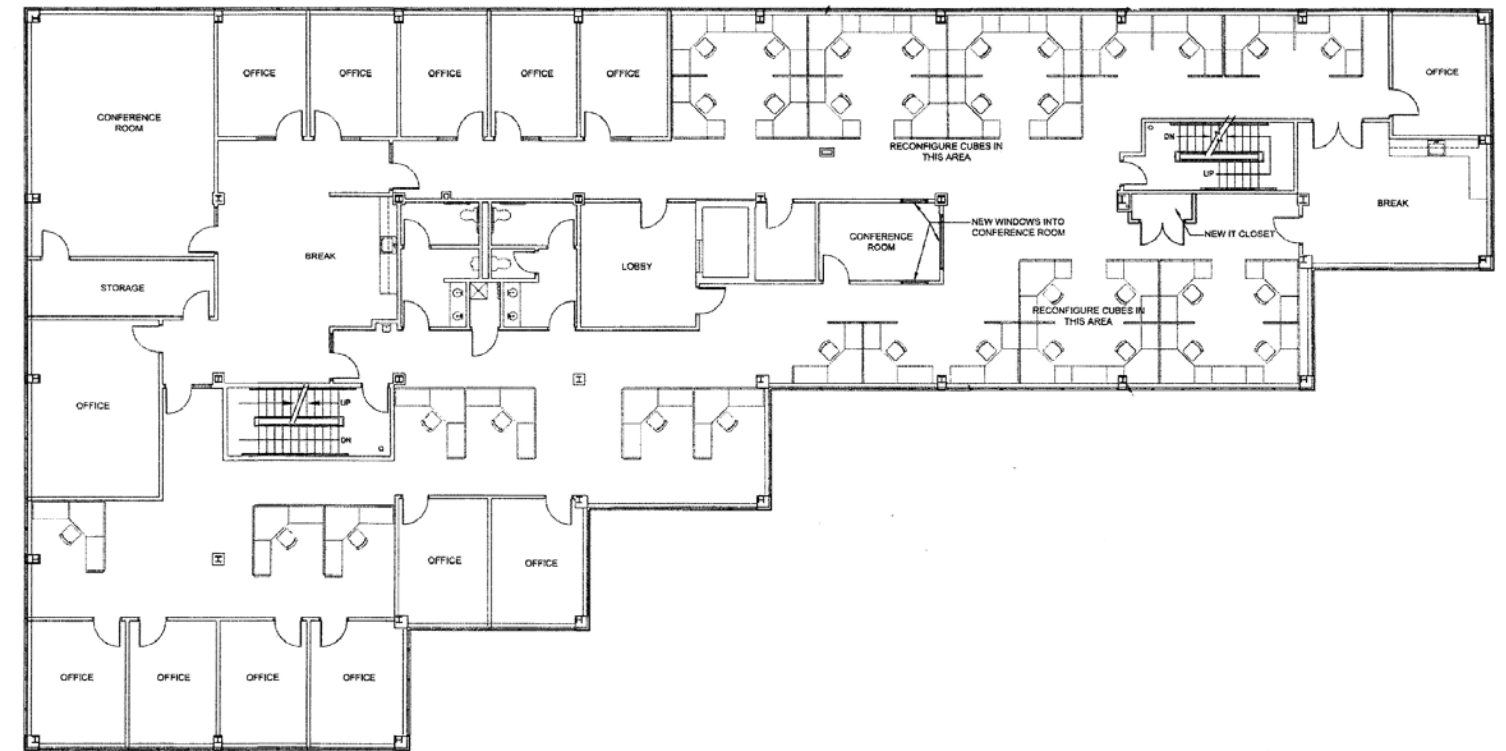
RENTAL RATE: \$14.50/SF Gross

LOCATION: Close proximity to Route 3, I-495, and the New Hampshire border.

Located close to restaurants, banks and shops. Walkable amenities include Chipotle, Starbucks, Pho88, Dunkin, Panera Bread, and Best Fitness among others.

SECOND FLOOR PLAN

5,110 - 10,220 SF Available



BUILDING SPECIFICATIONS

BUILDING MANAGEMENT: On-Site

PARKING: On-Site & Off-site overflow parking

WINDOWS: Ribbon

LAYOUT: Flexible

USE: Office/Lab

SIGNAGE: Exterior building signage may be available

OFFICE SPACE FOR LEASE

1115 WESTFORD STREET

Lowell, Massachusetts



TO ARRANGE A TOUR, PLEASE CONTACT:

TYLER EWING
Executive Vice President
617.457.3281
tewing@hunnemanre.com



303 Congress Street, Boston, MA 02210 617.457.3400 www.hunnemanre.com

@2023 Hunneman. All rights reserved. All information has been obtained from sources believed reliable but no warranty or representation is verified for accuracy or completeness. Caution and independent investigation of property and information should be verified. Reliance on this information is at your own risk.