

RETAIL PROPERTY FOR SALE

108 S Reilly Rd

Fayetteville, NC 28314



for more information

NEIL GRANT

Principal / Broker

O: 910.829.1617 x206

C: 910.818.3252

neil@grantmurrayre.com

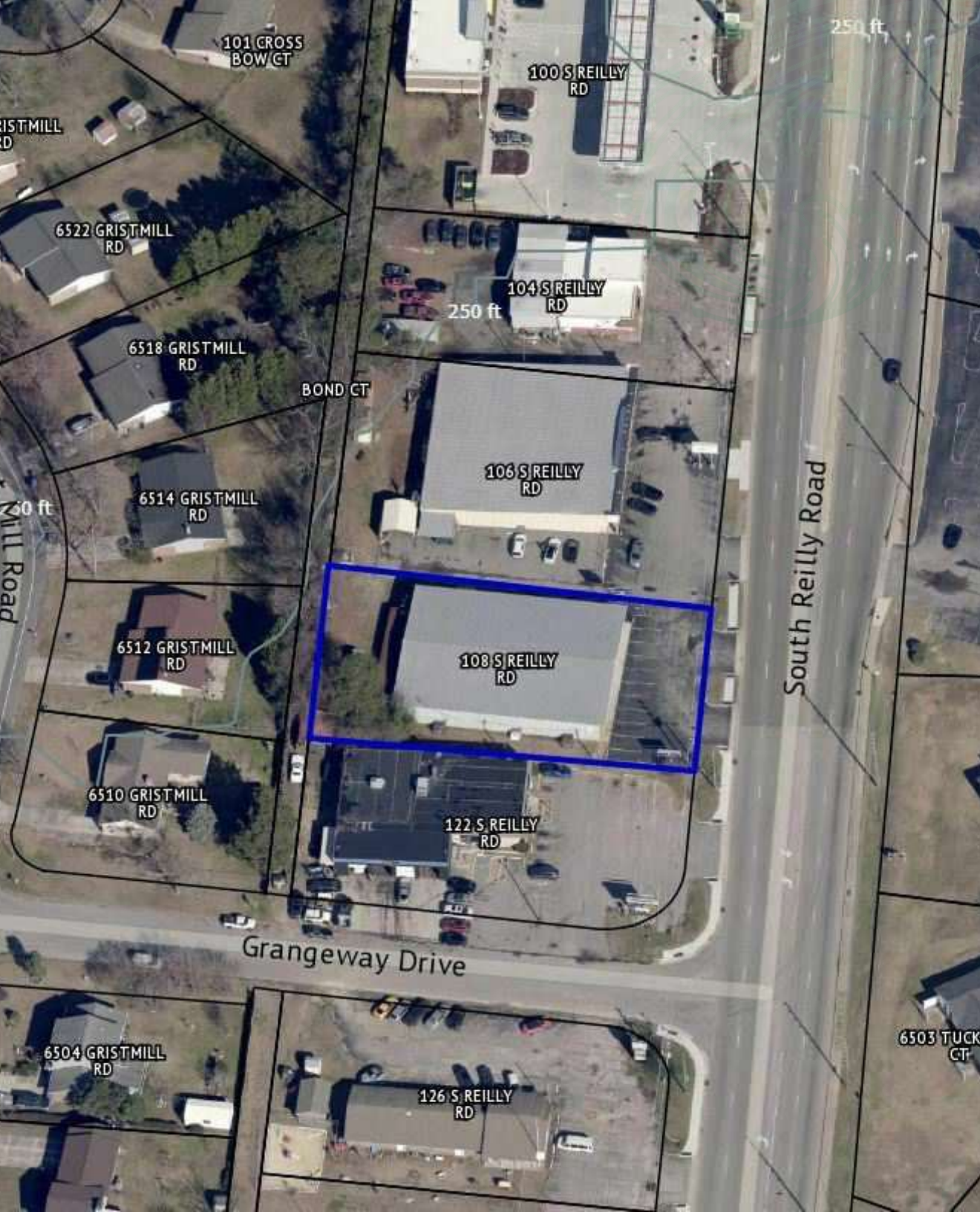


Grant - Murray

REAL ESTATE, LLC

COMMERCIAL AND INVESTMENT BROKERAGE

150 N. McPherson Church Rd | Fayetteville, NC 28303 | www.grantmurrayre.com



PROPERTY OVERVIEW

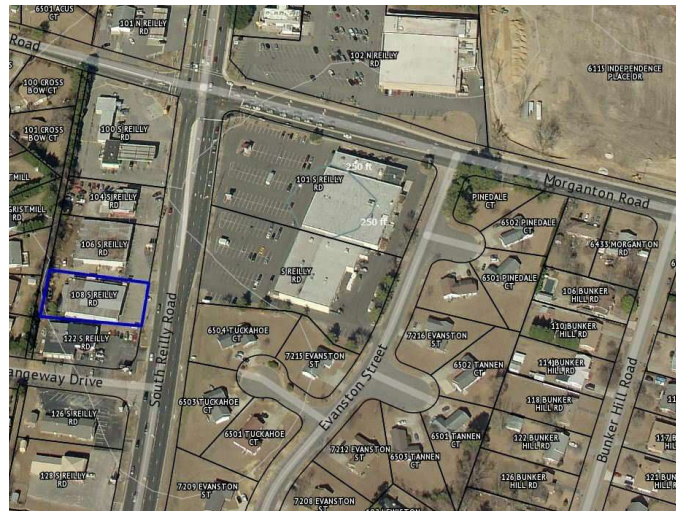
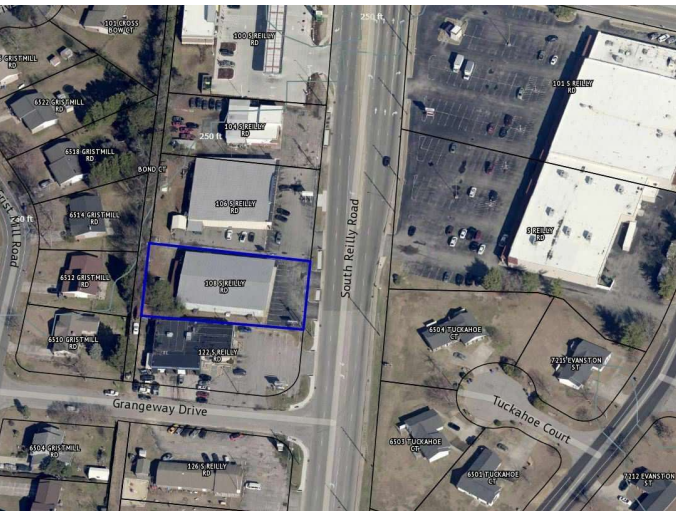
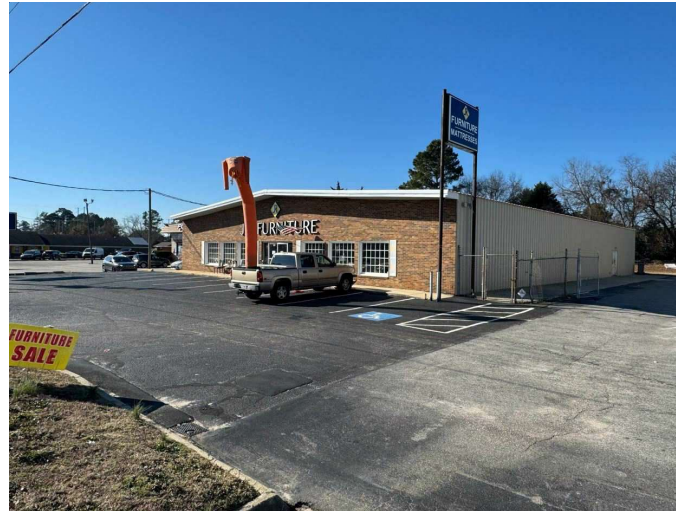
Sale Price:	\$880,000
Lease Rate:	\$ 14 SF/YR
Lot Size:	0.52 Acres
Year Built:	1977
Building Size:	8,800 SF
Zoning:	LC
Price / SF:	\$100.00

property description

This versatile 8,800 SF commercial property is available for lease at \$14/SF or for purchase at \$880,000, offering flexibility for both investors and tenants. Zoned LC, the space accommodates a variety of retail, office, or mixed-use possibilities. This property features a modern building with a versatile layout suitable for various commercial or industrial uses. The building is heated and air-conditioned, ensuring year-round comfort for occupants and operational efficiency. The interior includes expansive open spaces, high ceilings, and durable finishes designed to accommodate diverse business needs. Exterior features include ample parking and a loading area, enhancing functionality for logistics and customer access.

108 S Reilly Rd
FAYETTEVILLE, NC 28314

ADDITIONAL PHOTOS



for more information

NEIL GRANT

Principal / Broker

O: 910.829.1617 x206

C: 910.818.3252

neil@grantmurrayre.com



Grant - Murray
REAL ESTATE, LLC

COMMERCIAL AND INVESTMENT BROKERAGE

150 N. McPherson Church Rd | Fayetteville, NC 28303 | www.grantmurrayre.com

108 S Reilly Rd
FAYETTEVILLE, NC 28314

DEMOGRAPHICS MAP & REPORT

POPULATION	1 MILE	3 MILES	5 MILES
Total Population	7,950	47,544	121,326
Average Age	36	36	35
Average Age (Male)	34	35	34
Average Age (Female)	37	38	37

HOUSEHOLDS & INCOME	1 MILE	3 MILES	5 MILES
Total Households	3,389	20,592	46,285
# of Persons per HH	2.3	2.3	2.6
Average HH Income	\$72,188	\$71,473	\$75,382
Average House Value	\$157,322	\$164,934	\$182,464

Demographics data derived from AlphaMap



for more information

NEIL GRANT
 Principal / Broker
 O: 910.829.1617 x206
 C: 910.818.3252
 neil@grantmurrayre.com



Grant - Murray
 REAL ESTATE, LLC
 COMMERCIAL AND INVESTMENT BROKERAGE