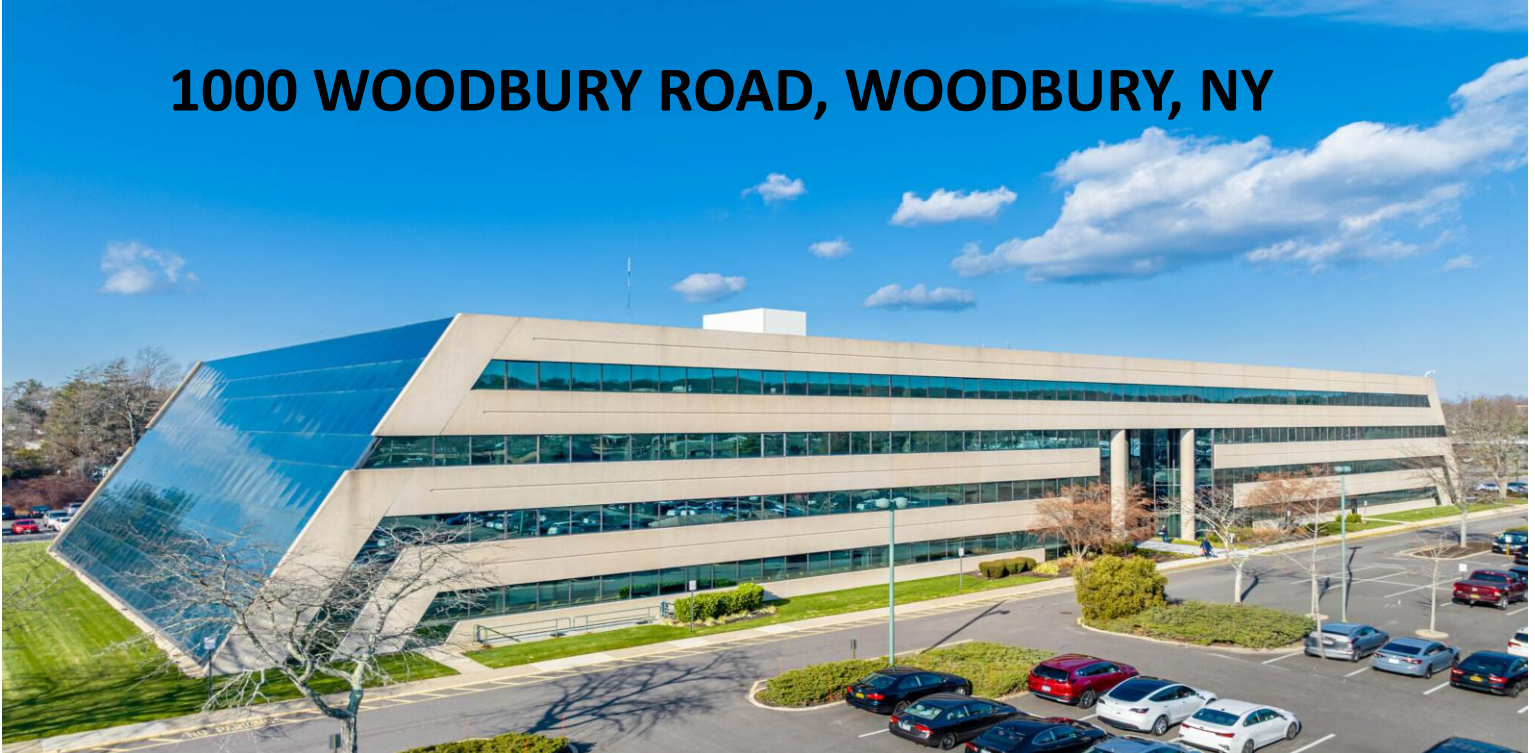


NEWMARK

AVAILABLE FOR LEASE

1000 WOODBURY ROAD, WOODBURY, NY



NEW OWNERSHIP | COMPETITIVE RATES

AVAILABLE SPACE

SUITE 120	+/- 4,600 SF
SUITE 207	+/- 2,300 SF
SUITE 209	+/- 3,200 SF
SUITE 214	+/- 16,000 SF
SUITE 300	+/- 48,000 SF
SUITE 400	+/- 15,750 SF

BUILDING AMENITIES

Building Upgrades Coming in 2025

- Full-Service Café
- Conferencing Center & Training Room
- Fitness Center
- On-site Management
- Proximate to LIE, Northern State Pkwy and Route 135 for easy access in all directions.

FOR MORE INFORMATION, PLEASE CONTACT EXCLUSIVE BROKER:

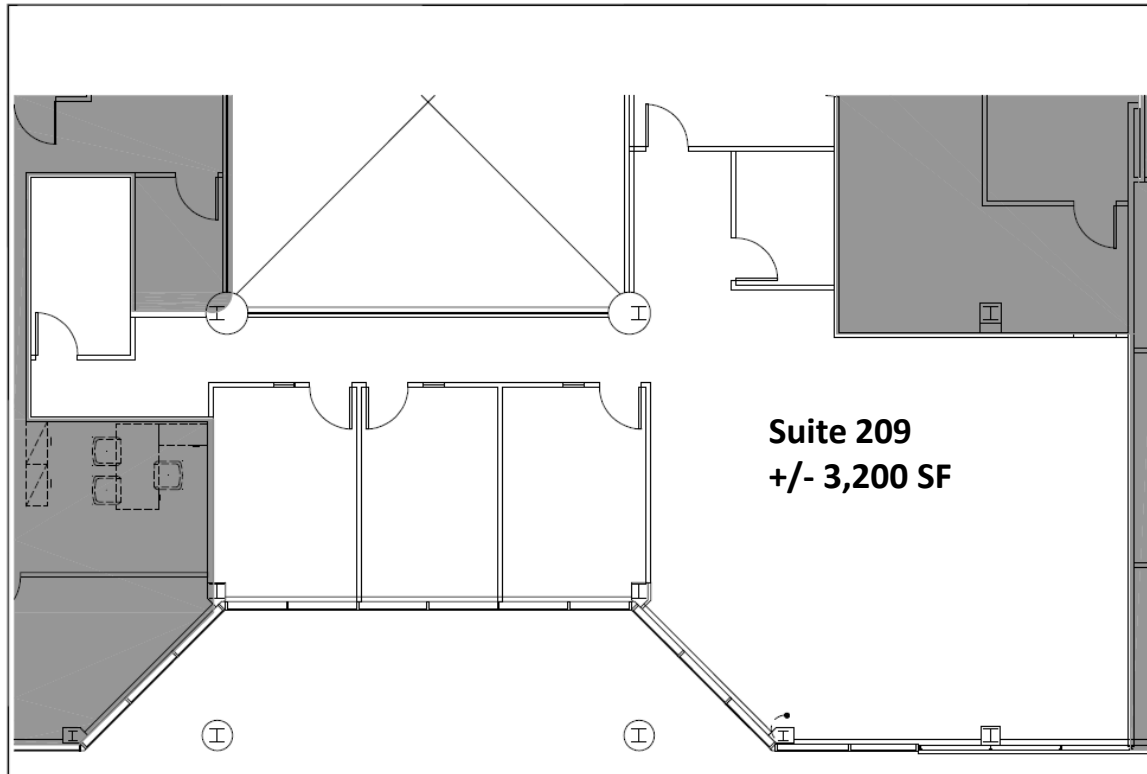
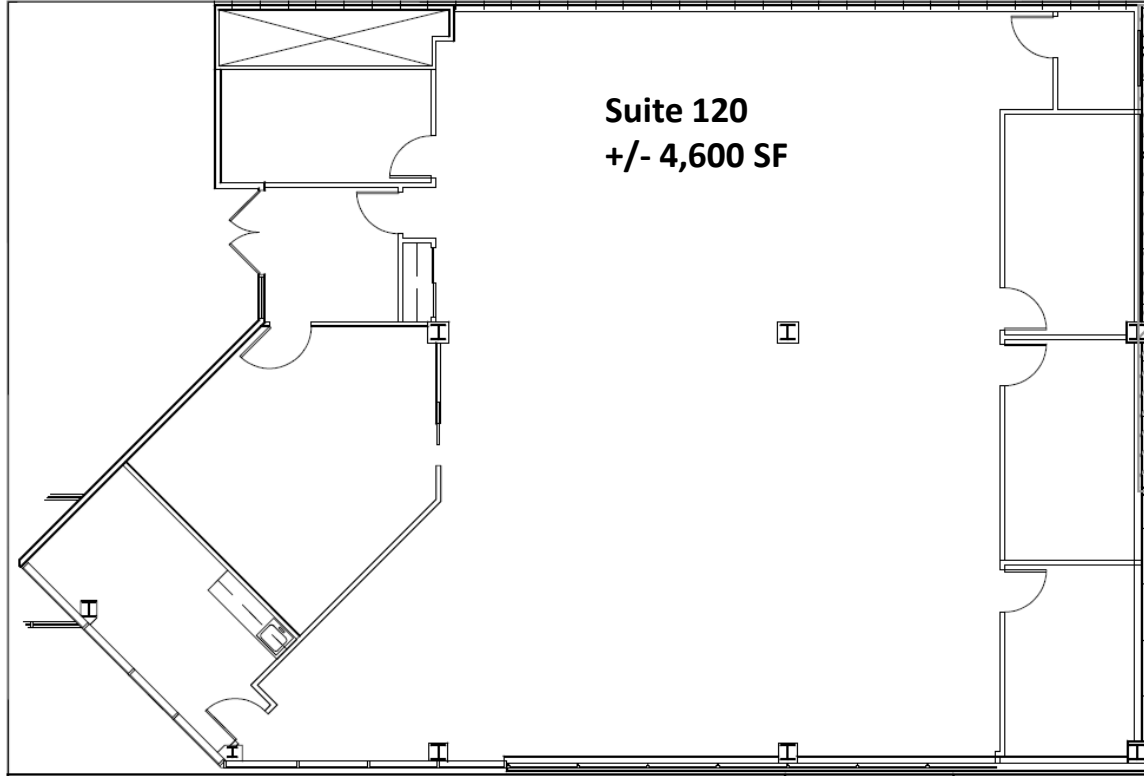
Brian Lee

Principal/ Executive Managing Director

O 631-673-0888; M 516-487-7770

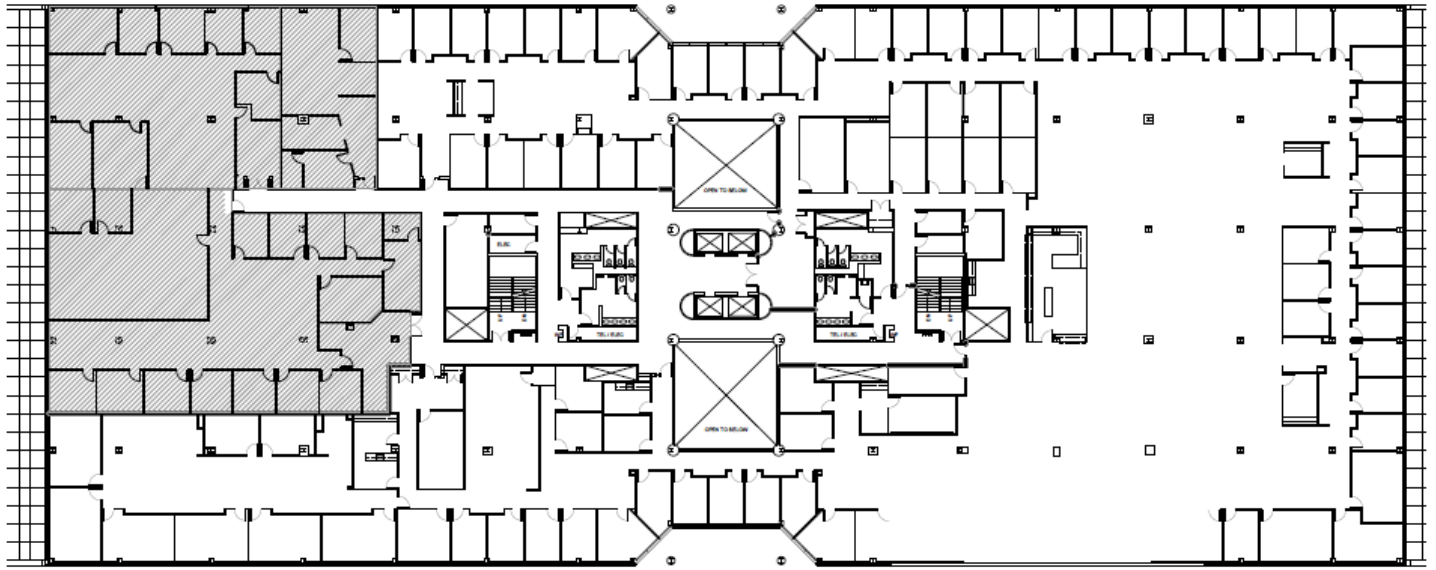
Brian.Lee@nrmk.com

NEWMARK

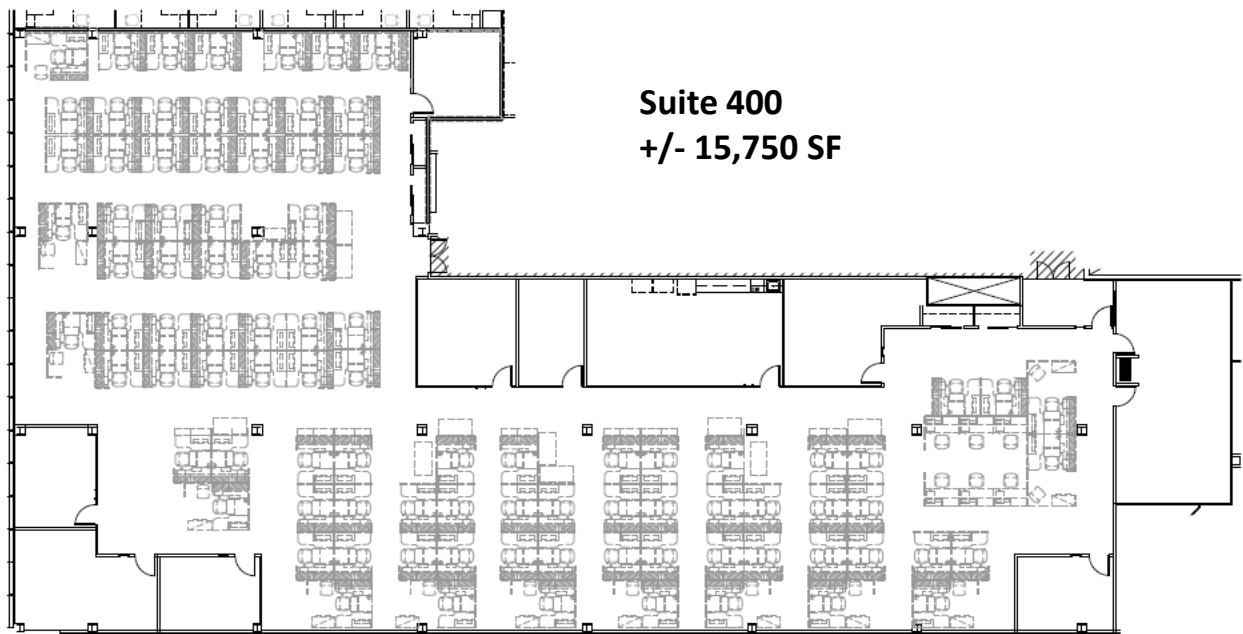


NEWMARK

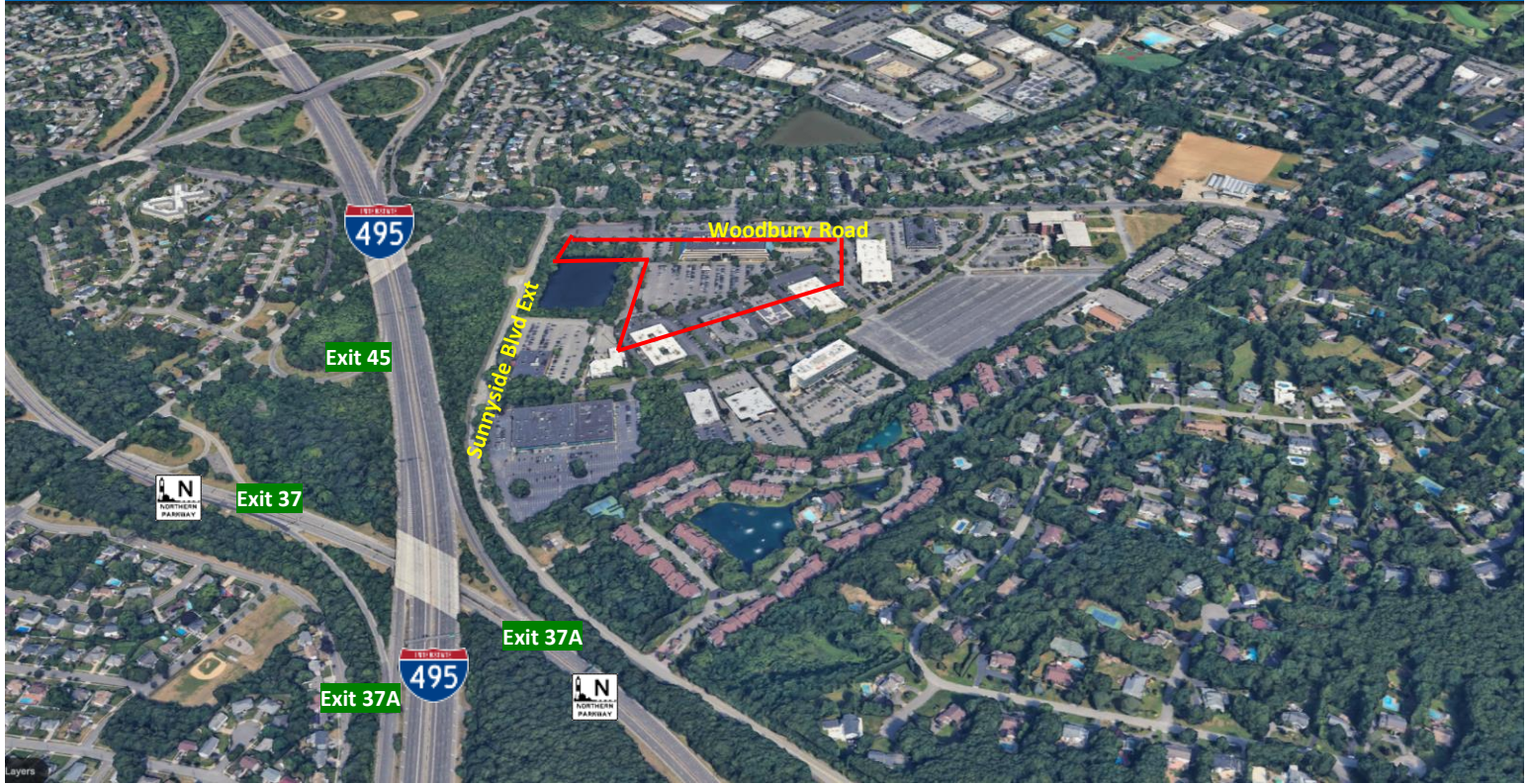
Suite 300
+/- 48,000 SF



Suite 400
+/- 15,750 SF



NEWMARK



FOR MORE INFORMATION, PLEASE CONTACT EXCLUSIVE BROKER:

Brian D. Lee

Principal/ Executive Managing Director

t 631-673-0888

Brian.Lee@nmrk.com

nmrk.com

290 Broadhollow Road, Suite 103E, Melville, NY 11747



All information contained in this publication is derived from sources that are deemed to be reliable. However, Newmark has not verified any such information, and the same constitutes the statements and representations only of the source thereof, and not of Newmark. Any recipient of this publication should independently verify such information and all other information that may be material to any decision that recipient may make in response to this publication, and should consult with professionals of the recipient's choice with regard to all aspects of that decision, including its legal, financial, and tax aspects and implications. Any recipient of this publication may not, without the prior written approval of Newmark, distribute, disseminate, publish, transmit, copy, broadcast, upload, download, or in any other way reproduce this publication or any of the information it contains. This document is intended for informational purposes only and none of the content is intended to advise or otherwise recommend a specific strategy. It is not to be relied upon in any way to predict market movement, investment in securities, transactions, investment strategies or any other matter.
©2020 Newmark. All Rights Reserved.