

**FOR SALE** | \$850,000  
OWNER USER OPPORTUNITY

# HOLGATE SQUARE

920 S HOLGATE ST, SEATTLE, WA | SUITE 108



**NEWMARK**

**MORGAN RICHEY, SIOR**  
Managing Director  
425.362.1409  
[morgan.richey@nmrk.com](mailto:morgan.richey@nmrk.com)

**EVAN LUGAR**  
Senior Managing Director  
425.362.1403  
[evan.lugar@nmrk.com](mailto:evan.lugar@nmrk.com)



**FOR SALE** | \$850,000  
OWNER USER OPPORTUNITY

# HOLGATE SQUARE

920 S HOLGATE ST, SEATTLE, WA | SUITE 108

## PROPERTY FACTS, FEATURES / HIGHLIGHTS

- Property Type: Flex, light manufacturing
- Year Built: 2010
- Power: 110-volt convenience power throughout both units and numerous 250-volt power outlets
- Flexible layout and design
- 1,500 SF/Unit including 500 SF mezzanine/Unit
- Industrial layout with high ceilings & roll up doors
- One (1) reserved parking stall
- One (1) 10" x 9' roll up grade door



**NEWMARK**

**MORGAN RICHEY, SIOR**  
Managing Director  
425.362.1409  
[morgan.richey@nmrk.com](mailto:morgan.richey@nmrk.com)

**EVAN LUGAR**  
Senior Managing Director  
425.362.1403  
[evan.lugar@nmrk.com](mailto:evan.lugar@nmrk.com)

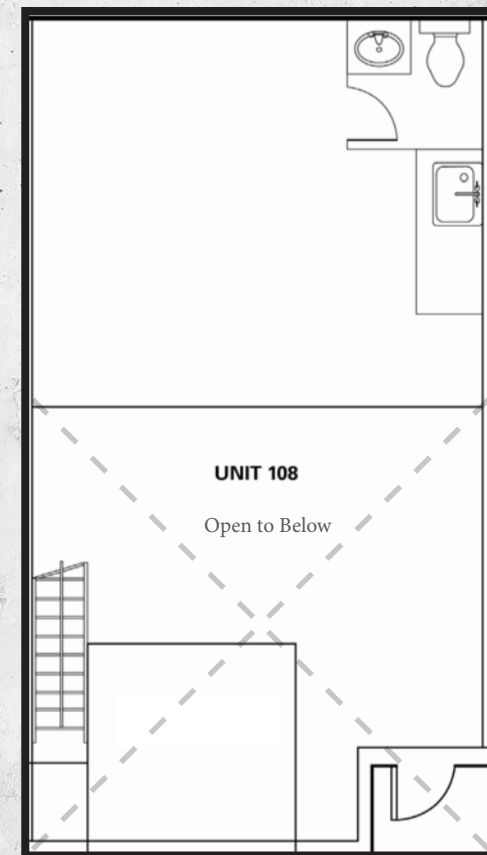
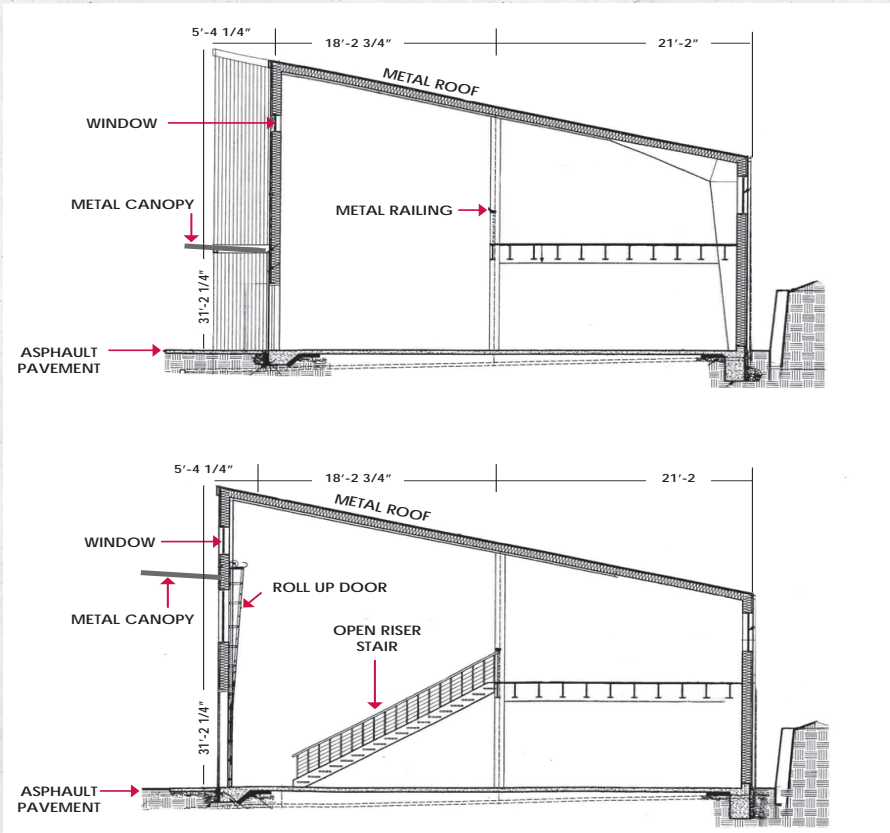


**FOR SALE | \$850,000**  
**OWNER USER OPPORTUNITY**

# HOLGATE SQUARE

920 S HOLGATE ST, SEATTLE, WA | SUITE 108

## PLANS



**NEWMARK**

**MORGAN RICHEY, SIOR**  
Managing Director  
425.362.1409  
morgan.richey@nmrk.com

**EVAN LUGAR**  
Senior Managing Director  
425.362.1403  
evan.lugar@nmrk.com

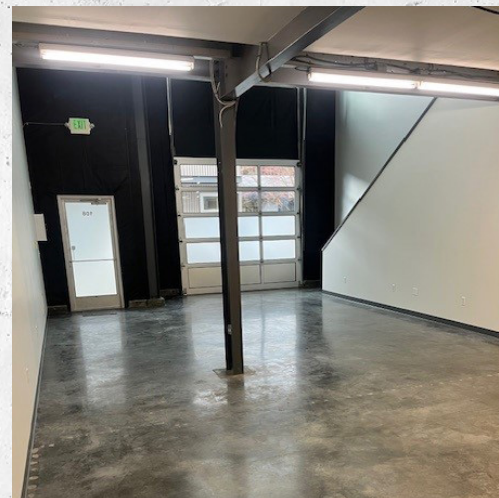
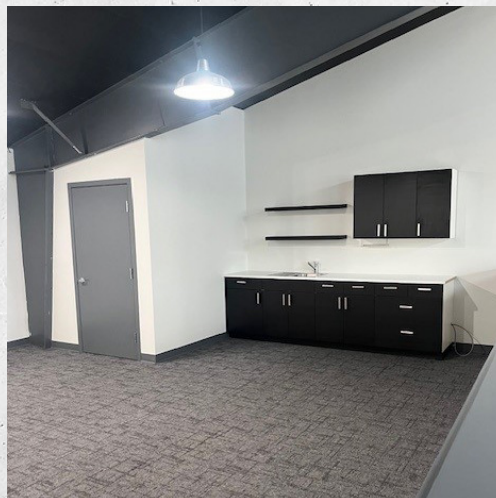


**FOR SALE** | \$850,000  
OWNER USER OPPORTUNITY

# HOLGATE SQUARE

920 S HOLGATE ST, SEATTLE, WA | SUITE 108

## INTERIOR PHOTOS



**NEWMARK**

**MORGAN RICHEY, SIOR**  
Managing Director  
425.362.1409  
[morgan.richey@nmrk.com](mailto:morgan.richey@nmrk.com)

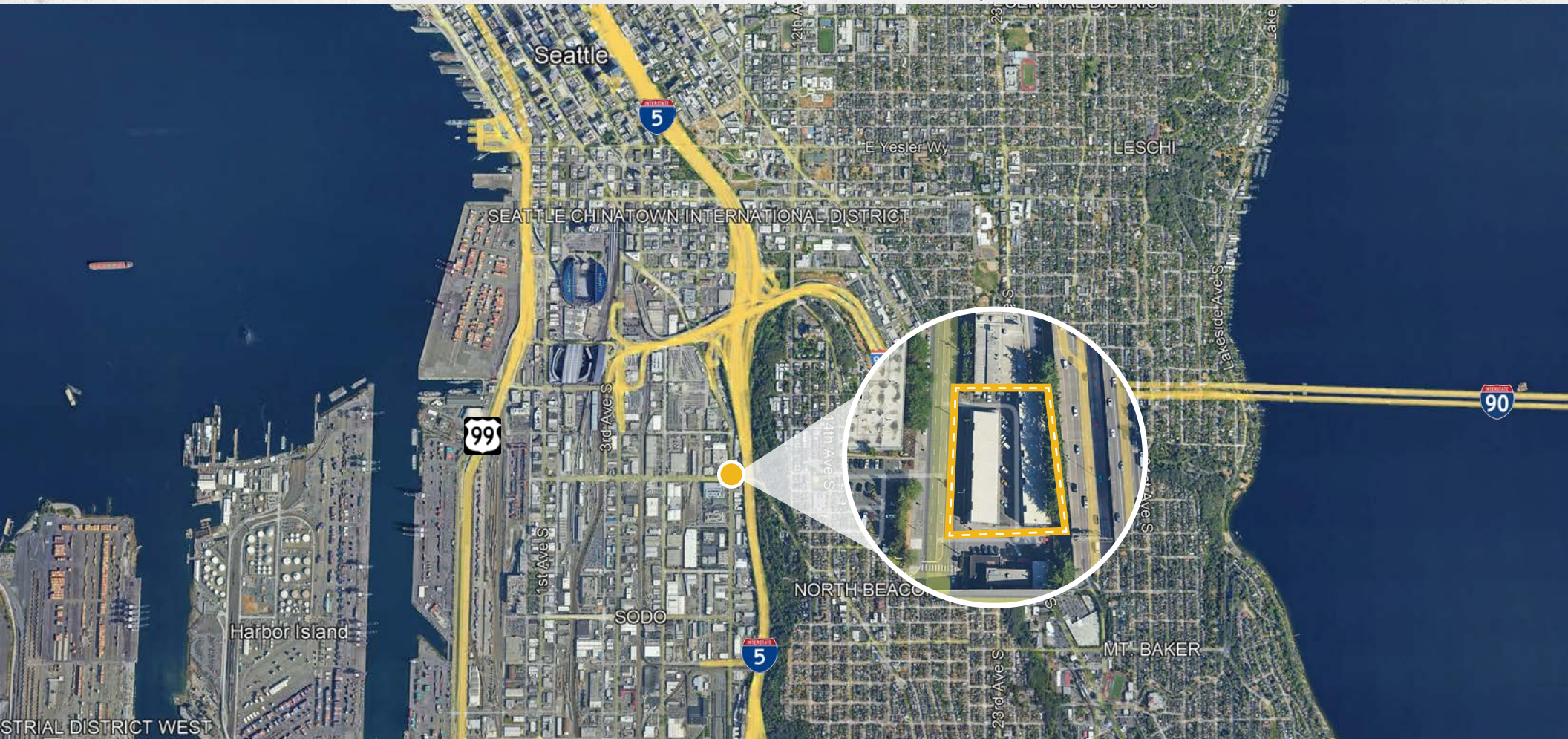
**EVAN LUGAR**  
Senior Managing Director  
425.362.1403  
[evan.lugar@nmrk.com](mailto:evan.lugar@nmrk.com)



**FOR SALE** | \$850,000  
OWNER USER OPPORTUNITY

# HOLGATE SQUARE

920 S HOLGATE ST, SEATTLE, WA | SUITE 108



**NEWMARK**

**MORGAN RICHEY, SIOR**  
Managing Director  
425.362.1409  
[morgan.richey@nrmk.com](mailto:morgan.richey@nrmk.com)

**EVAN LUGAR**  
Senior Managing Director  
425.362.1403  
[evan.lugar@nrmk.com](mailto:evan.lugar@nrmk.com)



# HOLGATE SQUARE

920 S HOLGATE ST, SEATTLE, WA | SUITE 108

**MORGAN RICHEY, SIOR**  
Managing Director  
425.362.1409  
[morgan.richey@nmrk.com](mailto:morgan.richey@nmrk.com)

**EVAN LUGAR**  
Senior Managing Director  
425.362.1403  
[evan.lugar@nmrk.com](mailto:evan.lugar@nmrk.com)

## NEWMARK

The distributor of this communication is performing acts for which a real estate license is required. The information contained herein has been obtained from sources deemed reliable but has not been verified and no guarantee, warranty or representation, either express or implied, is made with respect to such information. Terms of sale or lease and availability are subject to change or withdrawal without notice. 18-1023