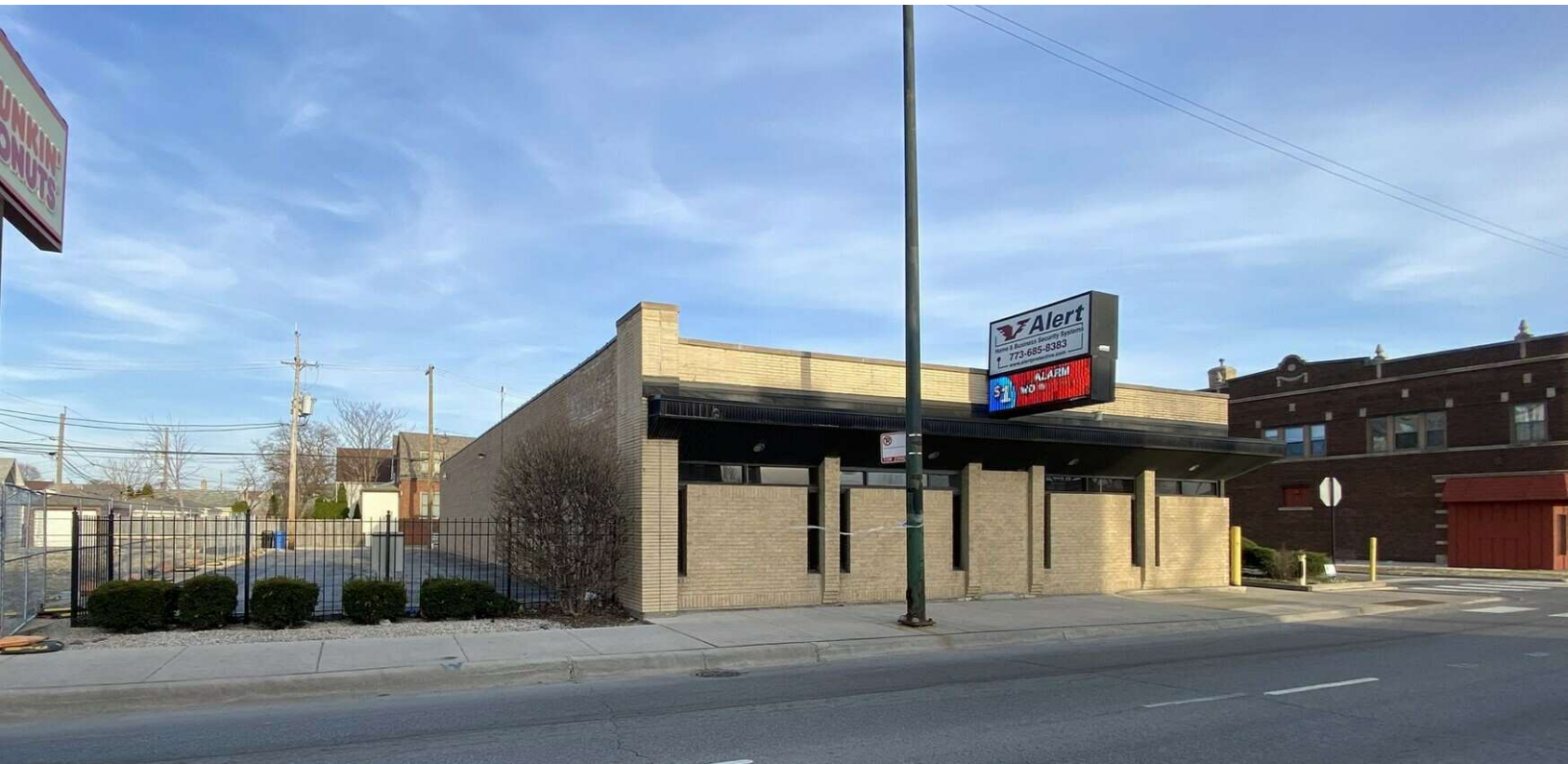


AVAILABLE FOR LEASE

3833 N. CICERO AVENUE, CHICAGO, IL 60641



OFFERING SUMMARY

AVAILABLE SIZE	5,000 SF
BUILDING SIZE	5,000 SF
ZONING	B3-1
LEASE RATE	Subject to Offer

PROPERTY DESCRIPTION

- Incredible opportunity to lease a free-standing office building with parking in the center of Old Irving Park and Portage Park
- Ample Parking
- Electronic Signage



LAURA PERLMAN | Associate | 773.714.2147 | lperlman@darwinpw.com
RICK DALY | President | 630.993.3859 | rdaly@darwinpw.com



970 N Oaklawn, Suite 100 | Elmhurst, IL 60126 | Tel: 630.782.9520 | darwinpw.com
Submitted subject to error, change in status, or withdrawal without notice.

AVAILABLE FOR LEASE

3833 N. CICERO AVENUE, CHICAGO, IL 60641



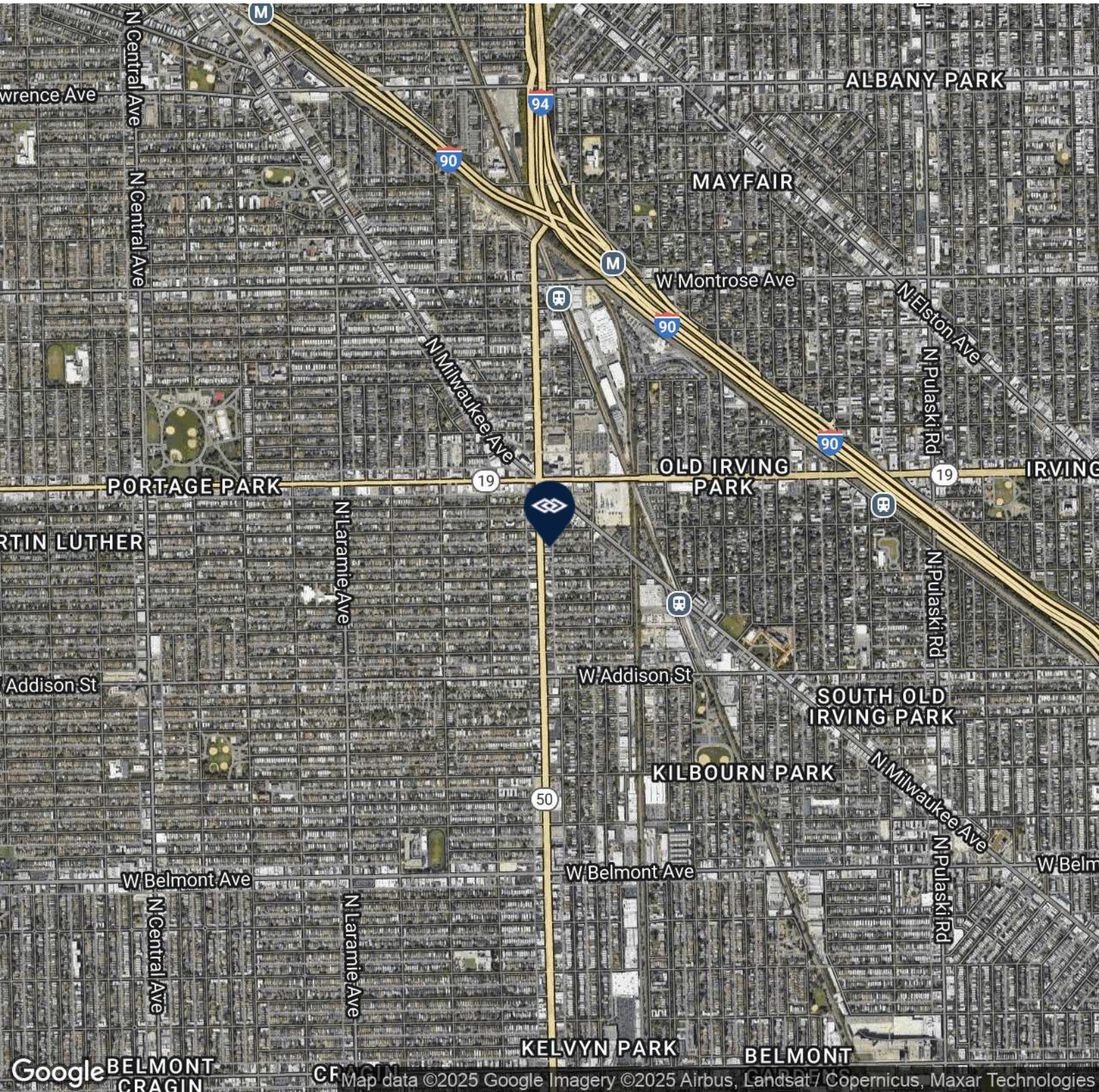
LAURA PERLMAN | Associate | 773.714.2147 | lperlman@darwinpw.com
RICK DALY | President | 630.993.3859 | rdaly@darwinpw.com



970 N Oaklawn, Suite 100 | Elmhurst, IL 60126 | Tel: 630.782.9520 | darwinpw.com
Submitted subject to error, change in status, or withdrawal without notice.

AVAILABLE FOR LEASE

3833 N. CICERO AVENUE, CHICAGO, IL 60641



LAURA PERLMAN | Associate | 773.714.2147 | lperlman@darwinpw.com
RICK DALY | President | 630.993.3859 | rdaly@darwinpw.com

