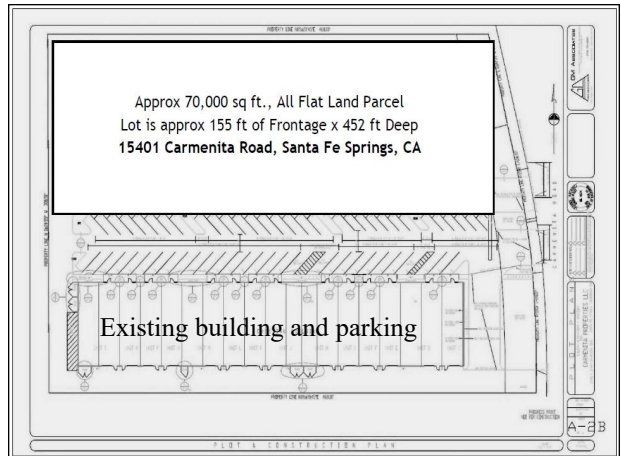


Carmenita Business Park 27,850 Sq Ft Multi-Unit Building
Parcel is ~140,000 ft total (3.2 acres), with ~ 70,000 ft vacant buildable land.
15401-15421 Carmenita Rd., SFS CA 90670
New membrane roof, landscaping, LED lighting, and asphalt in 2017.



Date Business Park 20,078 Sq Ft. Built in 2004.
41615 Date St, Murrieta CA 92562
Entire building exterior repainted in 2018.



Alvarado Business Park 13,329 Sq Ft. Built in 1988.
42387 Avenida Alvarado, Temecula CA 92590
New membrane roof and extensive asphalt repair in 2018.

